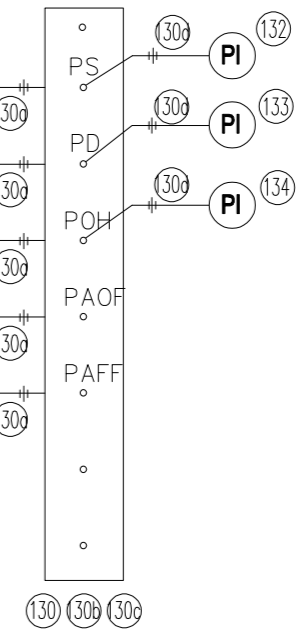
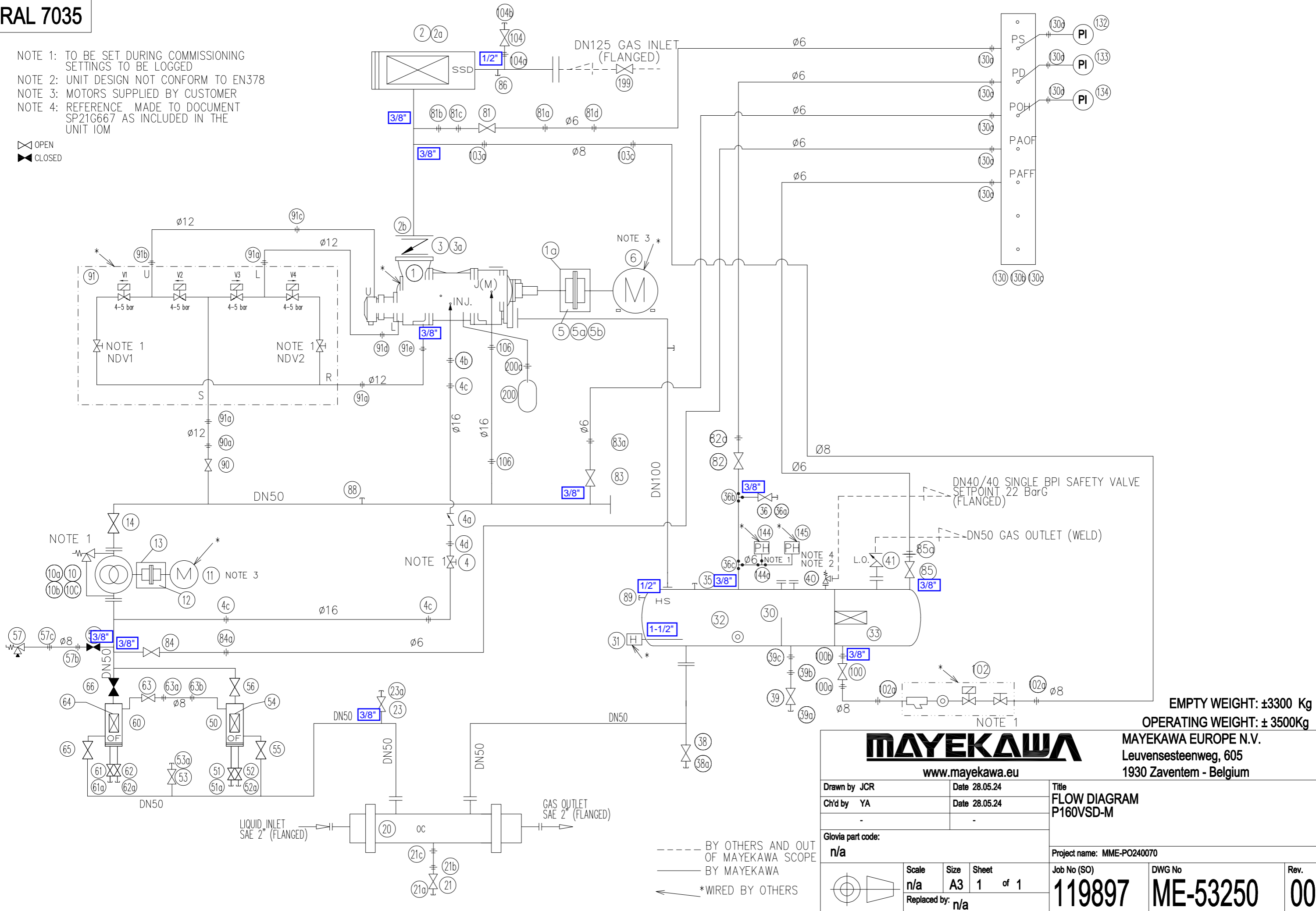


RAL 7035

- NOTE 1: TO BE SET DURING COMMISSIONING SETTINGS TO BE LOGGED
- NOTE 2: UNIT DESIGN NOT CONFORM TO EN378
- NOTE 3: MOTORS SUPPLIED BY CUSTOMER
- NOTE 4: REFERENCE MADE TO DOCUMENT SP21G667 AS INCLUDED IN THE UNIT IOM



EMPTY WEIGHT: ±3300 Kg
OPERATING WEIGHT: ± 3500Kg



www.mayekawa.eu

MAYEKAWA EUROPE N.V.
Leuvensesteenweg, 605
1930 Zaventem - Belgium

Drawn by JCR	Date 28.05.24	Title FLOW DIAGRAM P160VSD-M
Ch'd by YA	Date 28.05.24	

Glavia part code:
n/a

Project name: MME-PO240070

Scale n/a	Size A3	Sheet 1 of 1
Replaced by: n/a		

Job No (SO) 119897	DWG No ME-53250	Rev. 00
------------------------------	---------------------------	-------------------

--- BY OTHERS AND OUT OF MAYEKAWA SCOPE
— BY MAYEKAWA
← *WIRED BY OTHERS