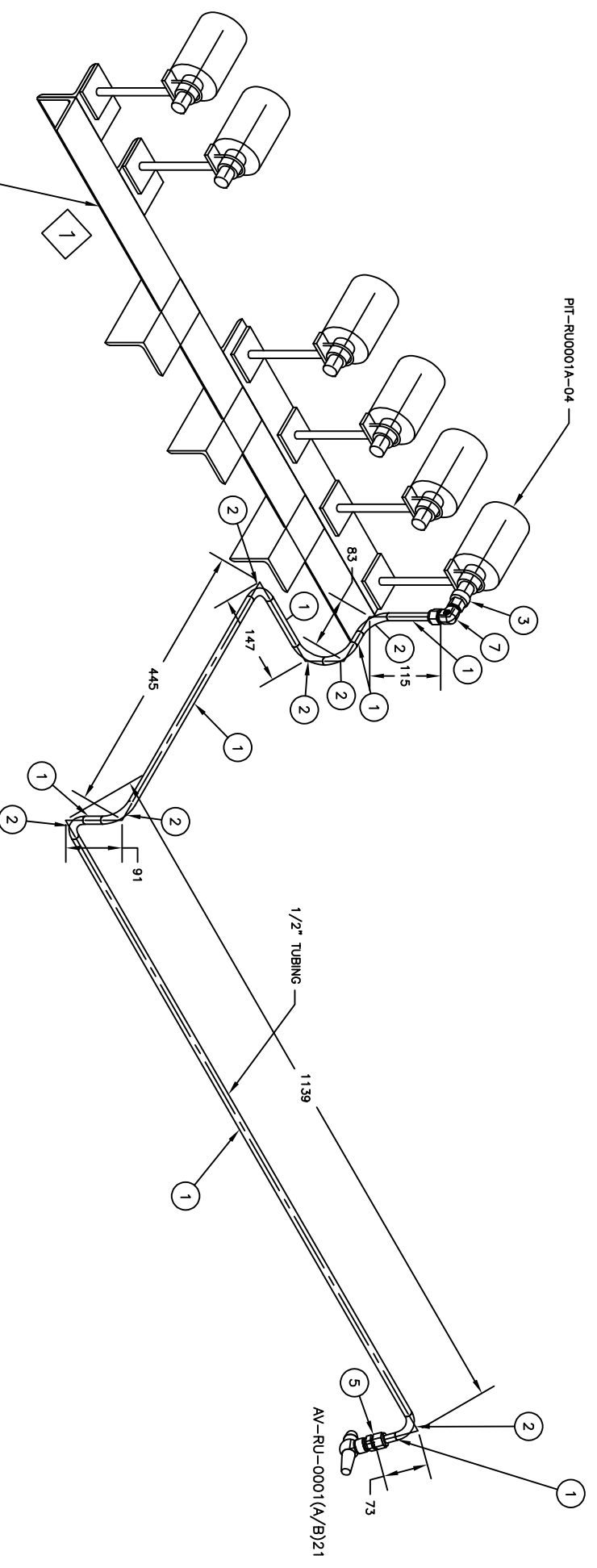


BILL OF MATERIALS		
ID	QTY	DESCRIPTION
1	2100 MM	TUBING, ASTM A269, SEAMLESS - 316SS
2	7	BEND 90 5R, TUBING, ASTM A269, 316SS
3	1	MaleStub1/2NPT(M) x 1/2"Tube
4	6	PRESSURE TRANSMITTER 1/2" NPT(F)
5	1	Male Connector 3/8 NPT x 1/2 T
6	1	ANGLE VALVE 3/8" NPT(M) X 1/2" NPT(F)
7	1	Female Union Elbow 1/2" T x 1/2" T

NOTES:  
 1. ALL TAGS ARE LABELED AS FOLLOWS:  
 PIT-RU0001(A/B)-01 WHERE 'A' STANDS FOR UNIT 1 &  
 'B' STANDS FOR UNIT 2.  
 FOR EXAMPLE: FOR UNIT 1  
 - PIT-RU0001A-01 FOR UNIT 2



REV.	STATUS	DATE	PURPOSE OF ISSUE	PREP.	CHKD.	APPD.	AUTH.
0	F	15.08.24	FOR APPROVAL	AJD	AJD	IES	SES

DRAWING TITLE:		PIT-RU0001(A/B)-04 HOOKUP DRAWING	
DRAWING NO.		MPE007-PI-T-RU0001(A/B)-04	
REV.	SHEET No.	SIZE	
0	1 OF 1	D	