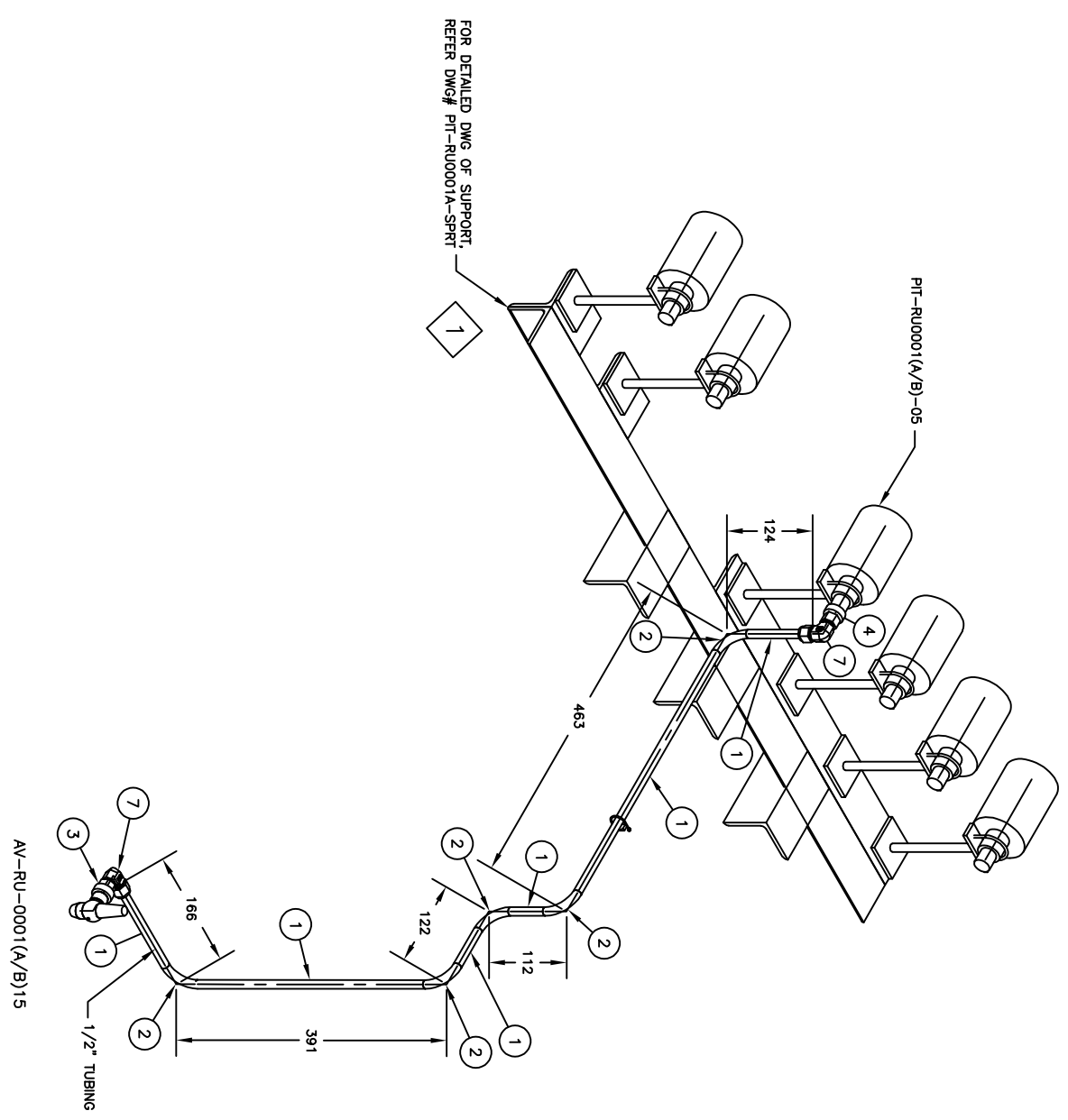


BILL OF MATERIALS			
ID	QTY	SCH/CLASS	DESCRIPTION
1	1400 MM		TUBING, ASTM A269, SEAMLESS - 316SS
2	5		BEND 90 SR, TUBING, ASTM A269, 316SS
3	1		Malesub 3/8 "NPT(M) x 1/2"Tube
4	1		Malesub 1/2NPT(M) x 1/2"Tube
5	6		PRESSURE TRANSMITTER 1/2" NPT(F)
6	1		ANGLE VALVE 3/8" NPT(M) x 3/8" NPT(F)
7	2		Female Union Elbow 1/2" T x 1/2"T
8	1		U-clamp

NOTES:  
 1. ALL TAGS ARE LABELED AS FOLLOWS:  
 PIT-RU0001(A/B)-01 WHERE 'A' STANDS FOR UNIT 1 &  
 'B' STANDS FOR UNIT 2.  
 FOR EXAMPLE: FOR UNIT 1  
 - PIT-RU0001A-01  
 - PIT-RU0001B-01 FOR UNIT 2



REV.	STATUS	DATE	PURPOSE OF ISSUE	PREP.	CHKD.	APPD.	AUTH.
0	F	16.08.24	FOR APPROVAL	AJD	AJD	IES	SES

Customer No.	ENER-MME-2024-100-001	SCALE
Project No.	ENER-MME-2024-100-001	
DRAWING TITLE: PIT-RU0001(A/B)-05 HOOKUP DRAWING		
DRAWING NO.	MPE007 - PIT-RU0001(A/B)-05	REV. SHEET No. SIZE 0 1 OF 1 D