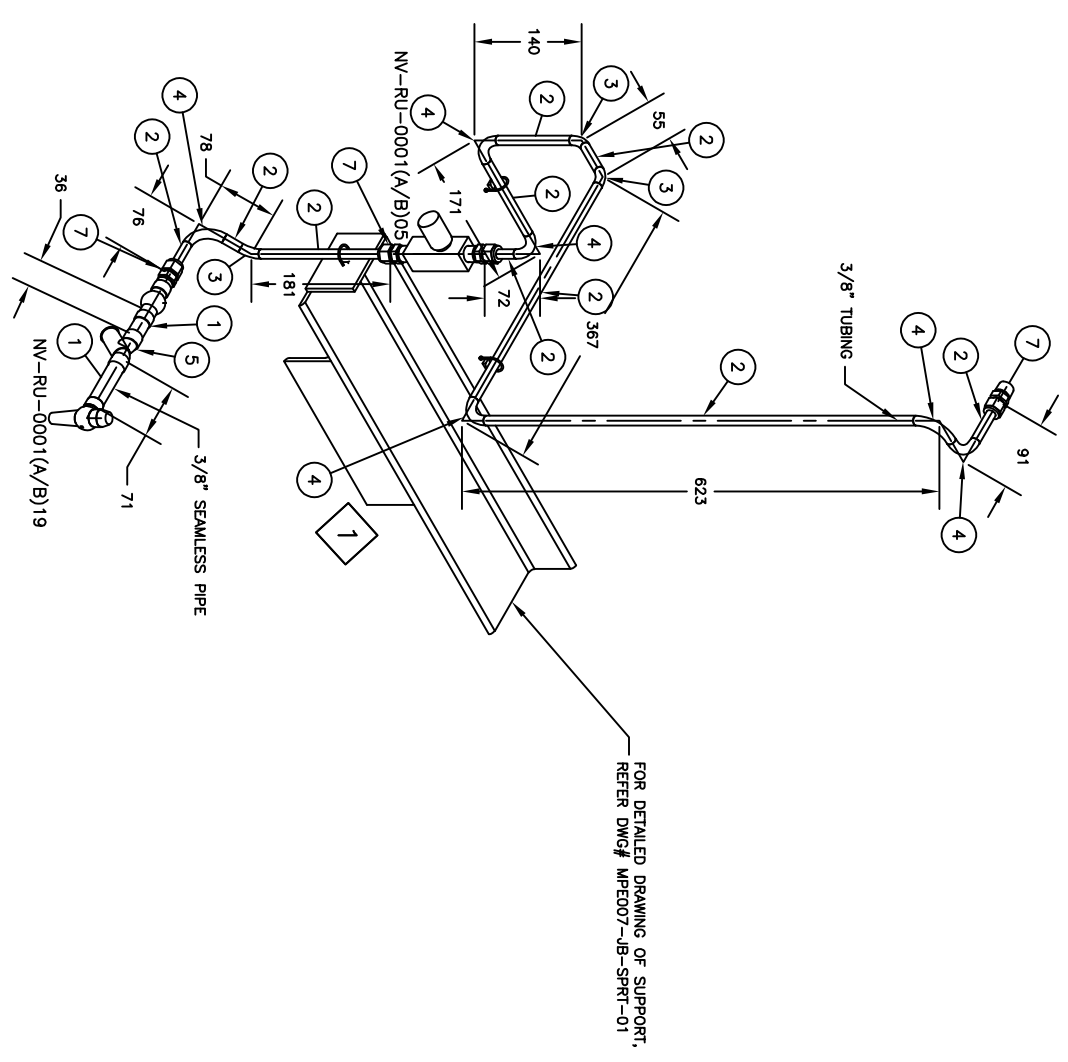


ID	QTY	SCH/GLASS	DESCRIPTION
1	120 MM	80	PIPE, SEAMLESS, SCH80, PE, ASME B36.10, ASTM A333 Gr 6
2	1875 MM		TUBING, ASTM A269, SEAMLESS - 316SS
3	3		BEND 45 SR, TUBING, ASTM A269, 316SS
4	6		BEND 90 SR, TUBING, ASTM A269, 316SS
5	1	300	Y-Type Strainer, 3/8" ND, 300 LB, FRT, ASME B16.10
6	1		FCV 3/8" NPT(F) x 3/8" NPT(F)
7	4		Male Connector 3/8 NPT x 3/8 T
8	1		ANGLE VALVE 3/8" NPT(M) X 3/8" NPT(F)
9	1	300	SIGHT GLASS, 3/8" NPT(F)
10	3		TUBE SUPPORT, 1/2"

NOTES:

- ALL TAGS ARE LABELED AS FOLLOWS:
 PT-RU0001(A/B)-01 WHERE 'A' STANDS FOR UNIT 1 & 'B' STANDS FOR UNIT 2.
 FOR EXAMPLE: FOR UNIT 1
 - PT-RU0001A-01
 - PT-RU0001B-01 FOR UNIT 2



REV.	STATUS	DATE	PURPOSE OF ISSUE	PREP.	CHKD.	APPD.	AUTH.
0	F	16.08.24	FOR APPROVAL	AJD	AJD	IES	SES

SERVICE LOCATION UNIT TAG NO. **808**
 FROM REGENERATION PACKAGE
 REVISION LOG:

Contract No.	PRO No.	SCALE
ENER-MME-2024-100-001		

DRAWING TITLE: **SEPARATOR OIL RECOVERY HOOKUP DRAWING**
 DRAWING NO. **MPE007-10776**

REV.	SHEET No.	SIZE
0	1 OF 1	D