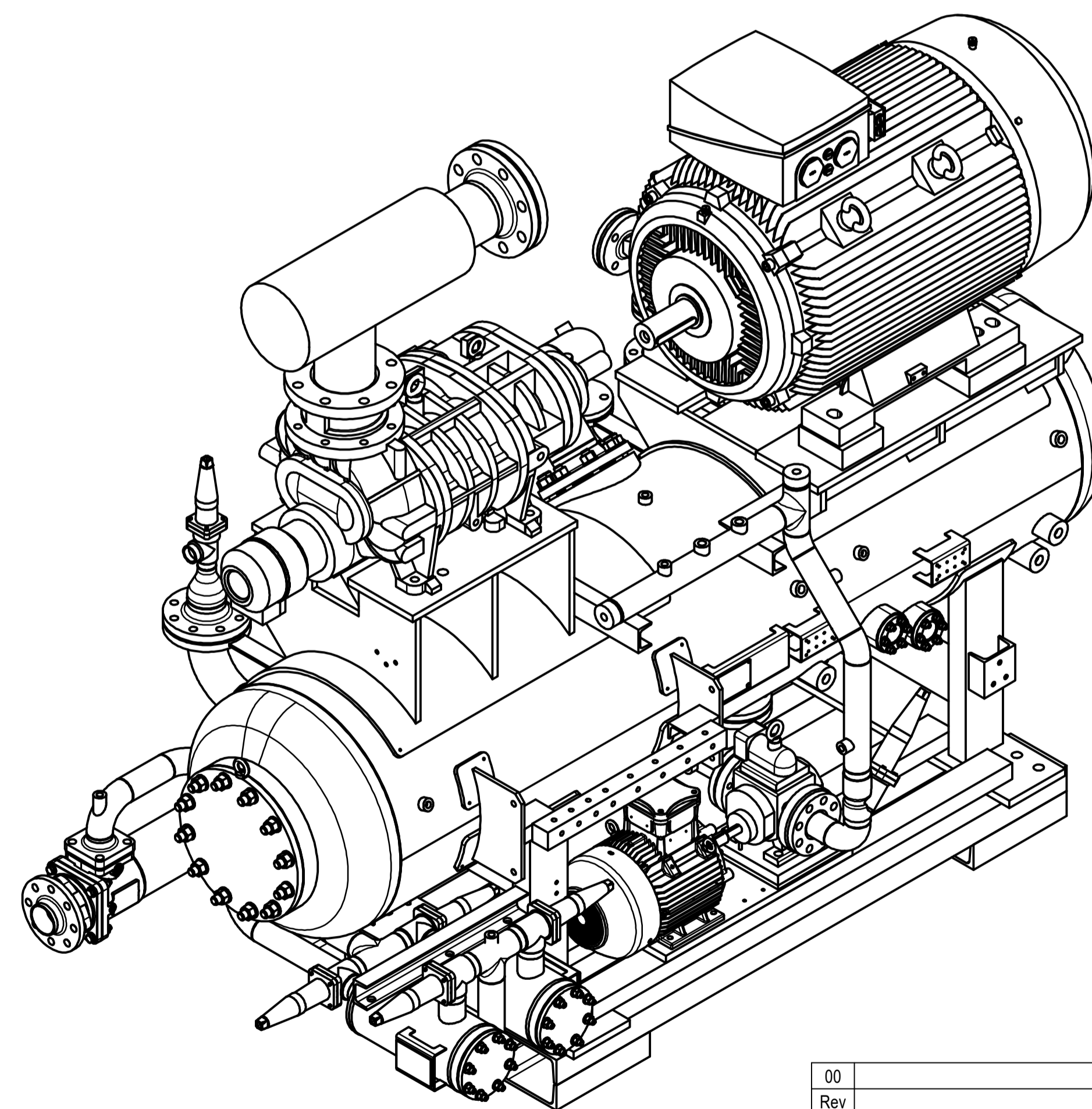
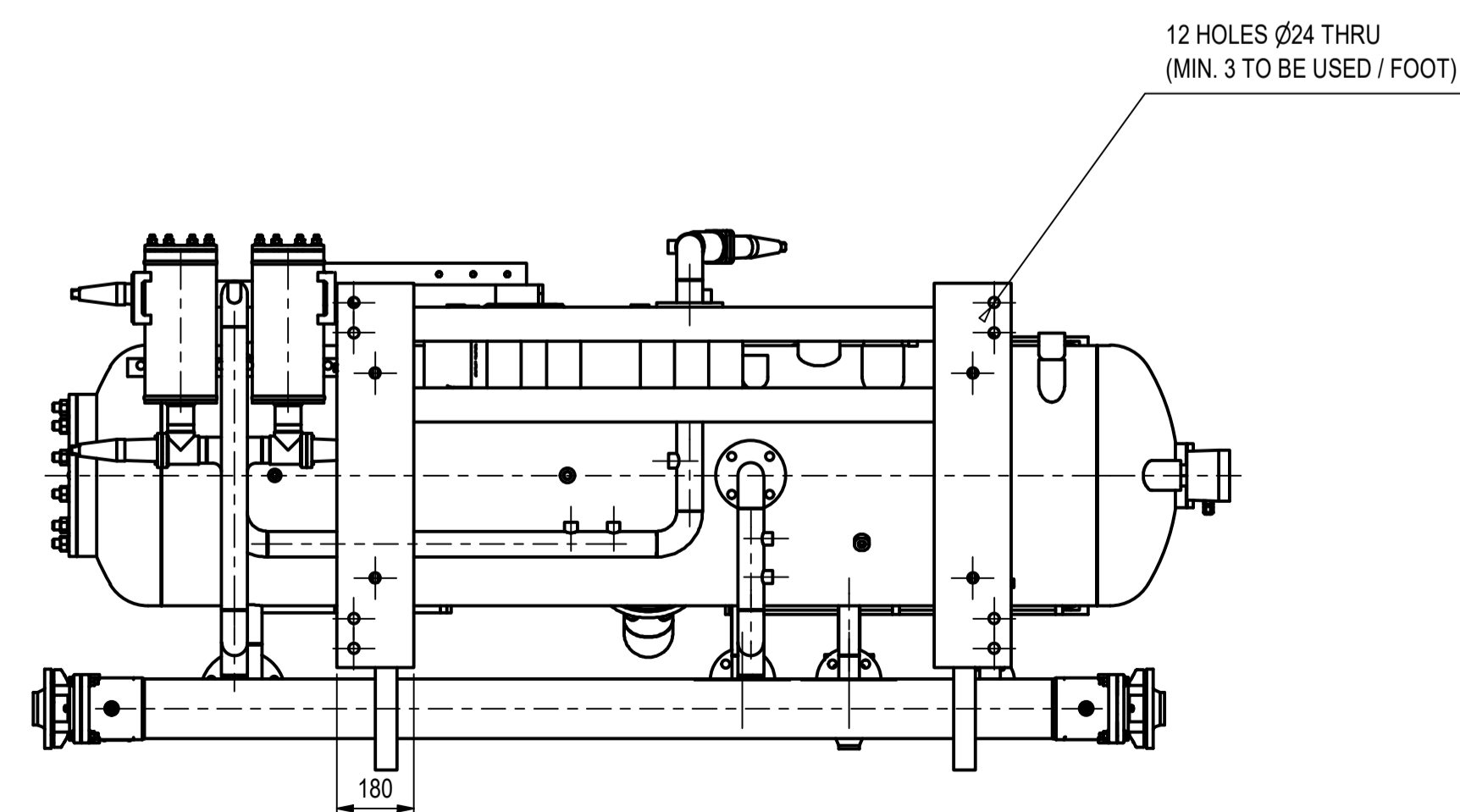
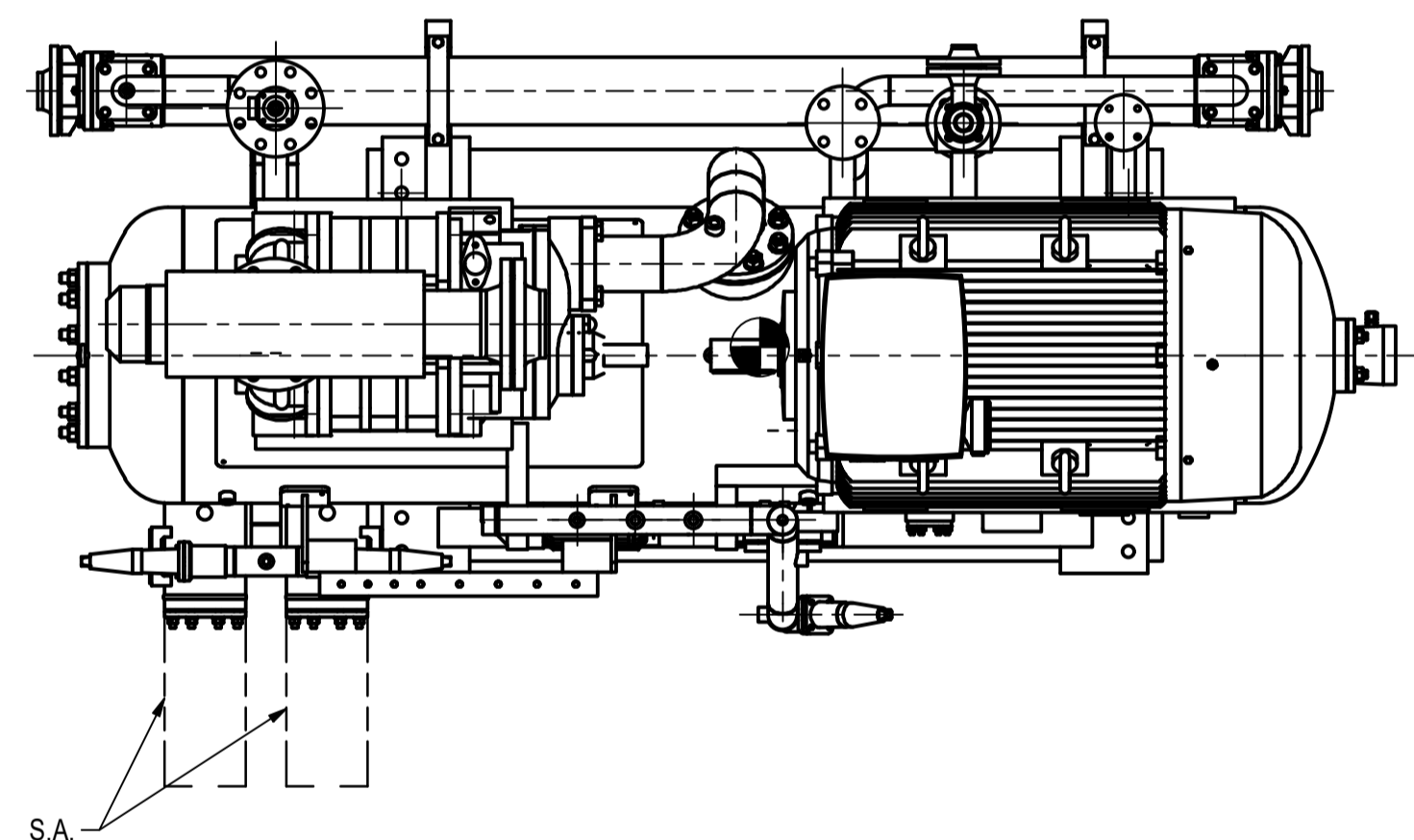
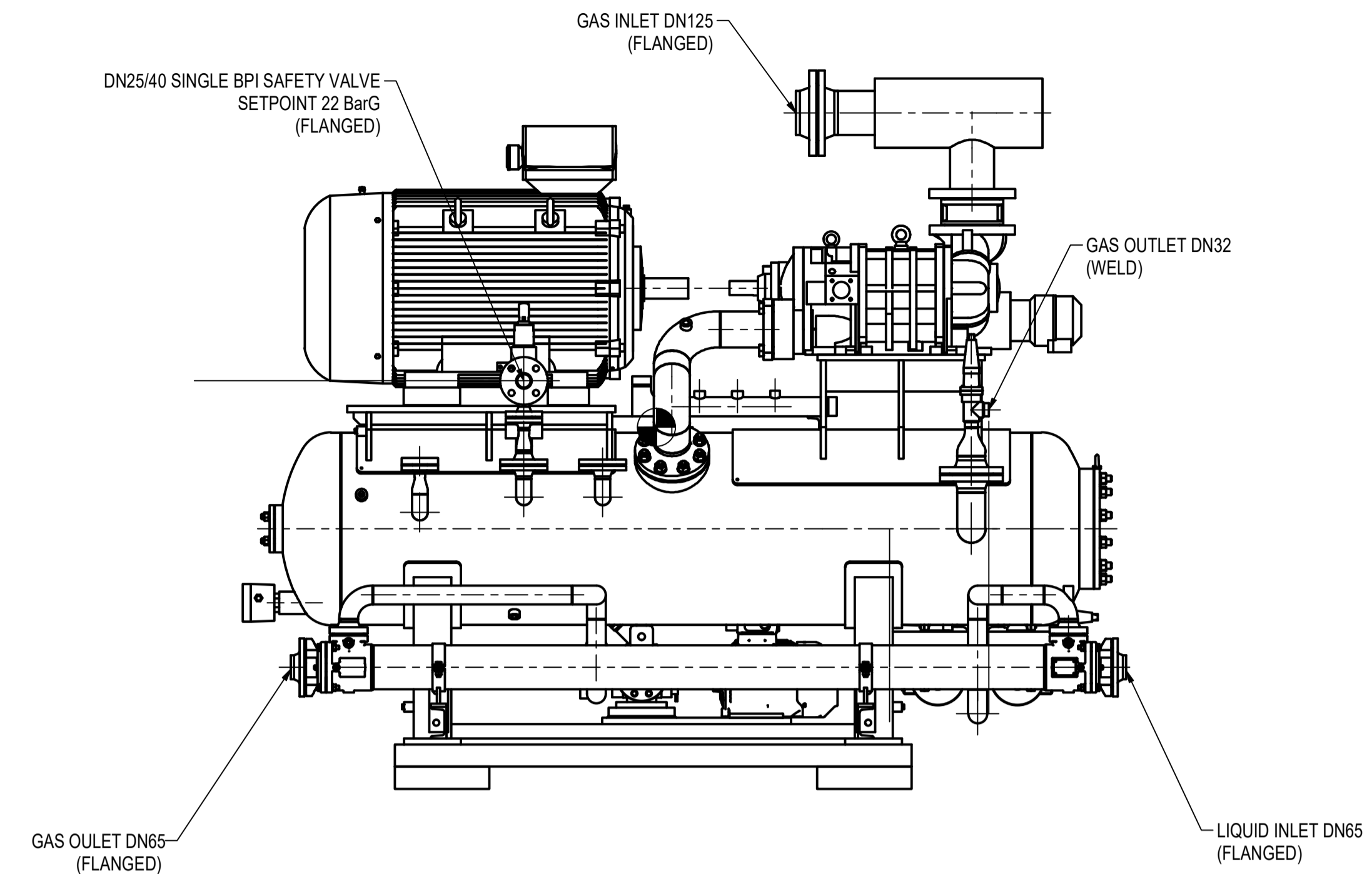


TRANSPORT PROFILES, REMOVE BEFORE INSTALLATION!



S.A. = SERVICE AREA

☉ = CENTER OF GRAVITY

For more accurate transport dimensions, please contact Mayekawa Europe one week in advance of foreseen shipment date.

Weight information (Approx.):

Empty weight (kg): 3300 Max. operating weight (kg): 3500

Paint information:

Unit color (RAL): 7035 Motor in the unit color: Yes No

Paint system:

00	First issue	JCR	MEM	29/01/2024
Rev	Description	Drw	App	Date App
Revision table				
MAYEKAWA		MAYEKAWA EUROPE N.V. Leuvensesteenweg, 605 1930 Zaventem - Belgium		Customer: Proj. nr.: Proj. name: Ext. dwg. nr.:
Status:		Ext. Rev.:		
Released		General arrangement for customer		
Drawn: JCR 29/01/2024		GLOVA Code		Size A1
Checked: MEM 31/01/2024				Sheet 1 of 1
Appr'd:				Rev. 00
Eng:				
Unless mentioned, all dimensions in mm		Scale: 1:15		
Rc = Int. BSPT taper (ISO 7)		Replaces:		
Rp = Int. BSPT parallel (ISO 7)				
R = Ext. BSPT (ISO 7)				

THIS DOCUMENT MUST BE TREATED AS CONFIDENTIAL. IT MUST NOT BE COPIED, DISTRIBUTED TO OTHERS OR ITS CONTENTS BE USED OR COMMUNICATED EITHER IN WHOLE OR IN PART WITHOUT PERMISSION OF MAYEKAWA EUROPE N.V. ALL RIGHTS ARE RESERVED.