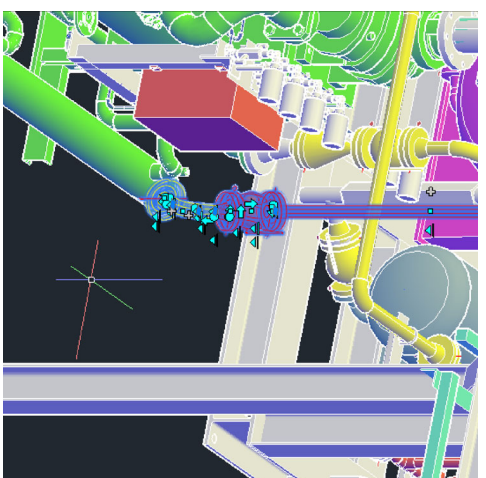
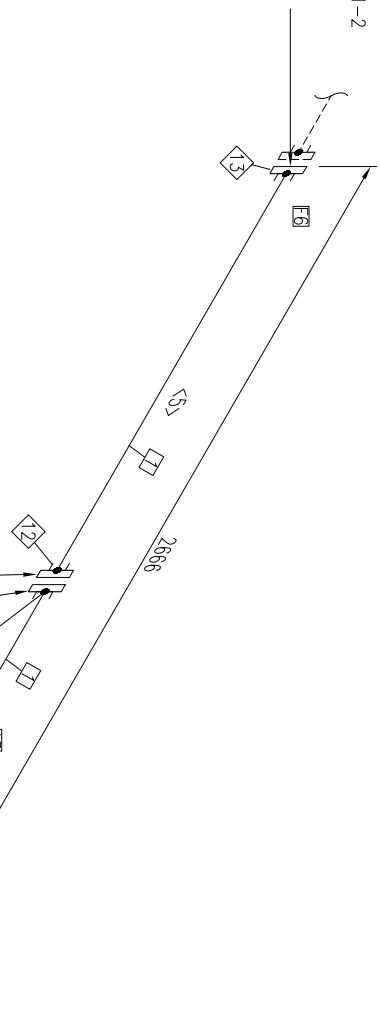




CONT'D ON  
 DWG# 60501-2  
 E 86554  
 N 84793  
 EL +2962



BILL OF MATERIALS

ID	QTY	ND	SCH/CLASS	DESCRIPTION
1	5.9M	40	80	PIPE PIPE, SEAMLESS, SCH80, PE, ASME B36.10, ASTM A333 GR 6
2	1	50	80	FITTINGS ELBOW 90 LR, SCH 80, BW, ASME B16.9, ASTM A420 GR WPL6
3	3	40	3000	ELL 90, 3000 LB, SW, ASME B16.11, ASTM A350 GR LF2
4	1	50X40	80	REDUCER (CONC), SCH 80, BW, ASME B16.9, ASTM A420 GR WPL6
5	1	40	80	FLANGES FLANGE NW, SCH80, 300 LB, RF, ASME B16.5, ASTM A350 GR LF2
6	4	40	300	FLANGE SW, 300 LB, RF, ASME B16.5, ASTM A350 GR LF2
7	1	50	300	FLANGE NW, 300 LB, RF, ASME B16.5, ASTM A105
8	12	20X89	300	FASTENERS BOLT SET, RF, 300 LB, STUD BOLT
9	8	16X89	300	BOLT SET, RF, 300 LB, STUD BOLT
10	3	40	300	GASKET, SWG, 1/8" THK, RF, 300 LB, ASME B16.20, CS/GRAPHITE
11	1	50	300	GASKET, SWG, 1/8" THK, RF, 300 LB, ASME B16.20, CS/GRAPHITE
12	1	40	300	VALVES BALL VALVE, LONG PATTERN, 300 LB, RF, ASME B16.10, ASTM A350 GR LF2
13	2	40		PIPE SUPPORTS U-CLAMP

CUT PIECE LIST

ID	LENGTH	ND	END1	END2
1	1441MM+200MM=1641MM	40	SQUARE CUT	SQUARE CUT
2	565MM+200MM=765MM	40	SQUARE CUT	SQUARE CUT
3	1208MM+200MM=1408MM	40	SQUARE CUT	SQUARE CUT
4	359MM	40	SQUARE CUT	SQUARE CUT
5	2230MM	40	SQUARE CUT	SQUARE CUT

- NOTES:
1. ALL TAPPED BRANCHES TO INCLUDE TWO (2) GUSSETS LOCATED 90 DEGREES APART.
  2. ALL SUPPORT WELDS SHALL BE CONTINUOUSLY WELDED.
  3. MATERIAL TEST REPORTS ARE REQUIRED.
  4. CHARPY IMPACT TESTS FOR LOW TEMP. MATERIALS ARE REQUIRED FROM EITHER THE MANUFACTURER OR FABRICATOR.
  5. 5% RADIOGRAPHIC EXAMINATION IS REQUIRED FOR EACH WELDER.
  6. WELDER LOG SHALL BE PROVIDED FOR INSPECTION.
  7. SQUARENESS OF ALL JOINTS SHALL FOLLOW TOLERANCE ALLOWABLE LIMITS.
  8. F.W= FIELD WELD

PROJECT NAME:  
**MPE007**

TITLE:  
 DRAWING NUMBER:  
**60501-1**

LINE NO.: **60501** AREA: SCALE: **N.T.S.** SHEET: **1** OF **2** REV: **1**

ID	ND	WELD TYPE	CATEGORY
13	40	SOCKETWELD	FABRICATION-ITEM
12	40	SOCKETWELD	FABRICATION-ITEM
11	40	SOCKETWELD	FABRICATION-ITEM
10	40	SOCKETWELD	FABRICATION-ITEM
9	40	SOCKETWELD	FABRICATION-ITEM
8	40	SOCKETWELD	FABRICATION-ITEM
7	40	SOCKETWELD	FABRICATION-ITEM
6	40	SOCKETWELD	FABRICATION-ITEM
5	40	SOCKETWELD	FABRICATION-ITEM
4	40	SOCKETWELD	FABRICATION-ITEM
3	40	BUTTWELD	FABRICATION-ITEM
2	50	BUTTWELD	FABRICATION-ITEM
1	50	BUTTWELD	FABRICATION-ITEM

REV.	DESCRIPTION	DATE	DRAWN	CHKD	APPD	INSULATION THK	SERVICE
0		08/22/24					PIPE SPEC
1		10/30/24					MAX PRESSURE
							MAX TEMPERATURE
							P&ID DWG
							INSULATION SPEC

