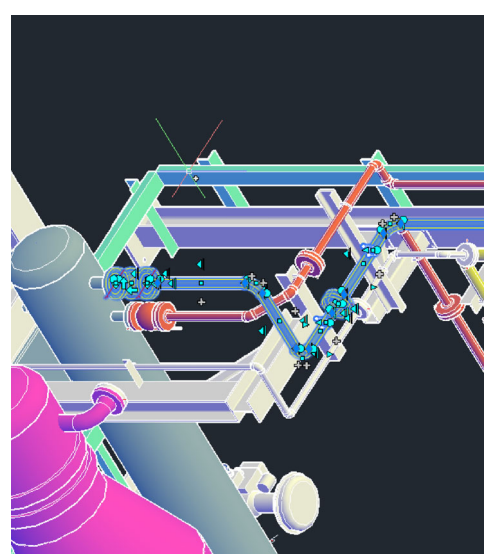


ID	ND	TYPE	CATEGORY
10	50	BUTTWELD	FABRICATION-ITEM
9	50	BUTTWELD	FABRICATION-ITEM
8	50	BUTTWELD	FABRICATION-ITEM
7	50	BUTTWELD	FABRICATION-ITEM
6	50	BUTTWELD	FABRICATION-ITEM
5	50	BUTTWELD	FABRICATION-ITEM
4	50	BUTTWELD	FABRICATION-ITEM
3	50	BUTTWELD	FABRICATION-ITEM
2	50	BUTTWELD	FABRICATION-ITEM
1	50	BUTTWELD	FABRICATION-ITEM

REV.	DESCRIPTION	DATE	DRAWN	CHKD	APPD
		10/30/24			



SERVICE	INSULATION THK
PIPE SPEC	
MAX PRESSURE	
MAX TEMPERATURE	
P&ID DWG	
INSULATION SPEC	

BILL OF MATERIALS

ID	QTY	ND	SCH/CLASS	DESCRIPTION
1	3.9M	50	80	PIPE SEAMLESS, SCH80, PE, ASME B36.10, ASTM A333 GR 6
2	3	50	80	ELBOW 90 LR, SCH 80, BW, ASME B16.9, ASTM A420 GR WPL6
3	4	50	80	FLANGE WN, SCH 80, 300 LB, RF, ASME B16.5, ASTM A350 GR LF2
4	24	16X89	300	BOLT SET, RF, 300 LB, STUD BOLT
5	3	50	300	GASKET, SMG, 1/8" THK, RF, 300 LB, ASME B16.20, CS/GRAPHITE
6	1	50	300	BALL VALVE, LONG PATTERN, 300 LB, RF, ASME B16.10, ASTM A350 GR LF2
7	3	50		PIPE SUPPORTS
				U-CLAMP

ID	LENGTH	ND	END1	END2
1	609MM	50	BEVEL	BEVEL
2	418MM	50	BEVEL	BEVEL
3	279MM	50	BEVEL	BEVEL
4	473MM+200MM=673MM	50	BEVEL	BEVEL
5	2059MM+200MM=2259MM	50	BEVEL	BEVEL

NOTES:

1. ALL TAPPED BRANCHES TO INCLUDE TWO (2) GUSSETS LOCATED 90 DEGREES APART.
2. ALL SUPPORT WELDS SHALL BE CONTINUOUSLY WELDED.
3. MATERIAL TEST REPORTS ARE REQUIRED.
4. CHARPY IMPACT TESTS FOR LOW TEMP. MATERIALS ARE REQUIRED FROM EITHER THE MANUFACTURER OR FABRICATOR.
5. 5% RADIOGRAPHIC EXAMINATION IS REQUIRED FOR EACH WELDER.
6. WELDER LOG SHALL BE PROVIDED FOR INSPECTION.
7. SQUARENESS OF ALL JOINTS SHALL FOLLOW TOLERANCE ALLOWABLE LIMITS.

PROJECT NAME: MPE007

DRAWING NUMBER: 60502

LINE NO: 60502

SCALE: N.T.S.

SHEET: 1 of 1

REV: 0