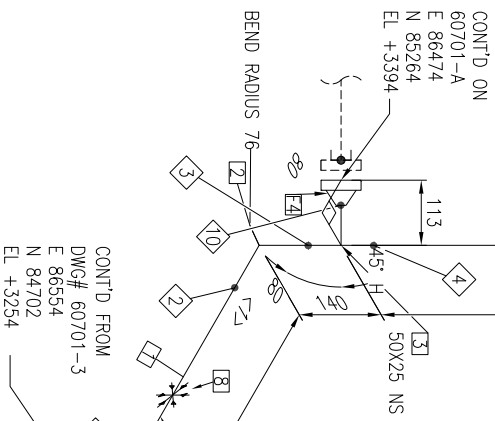
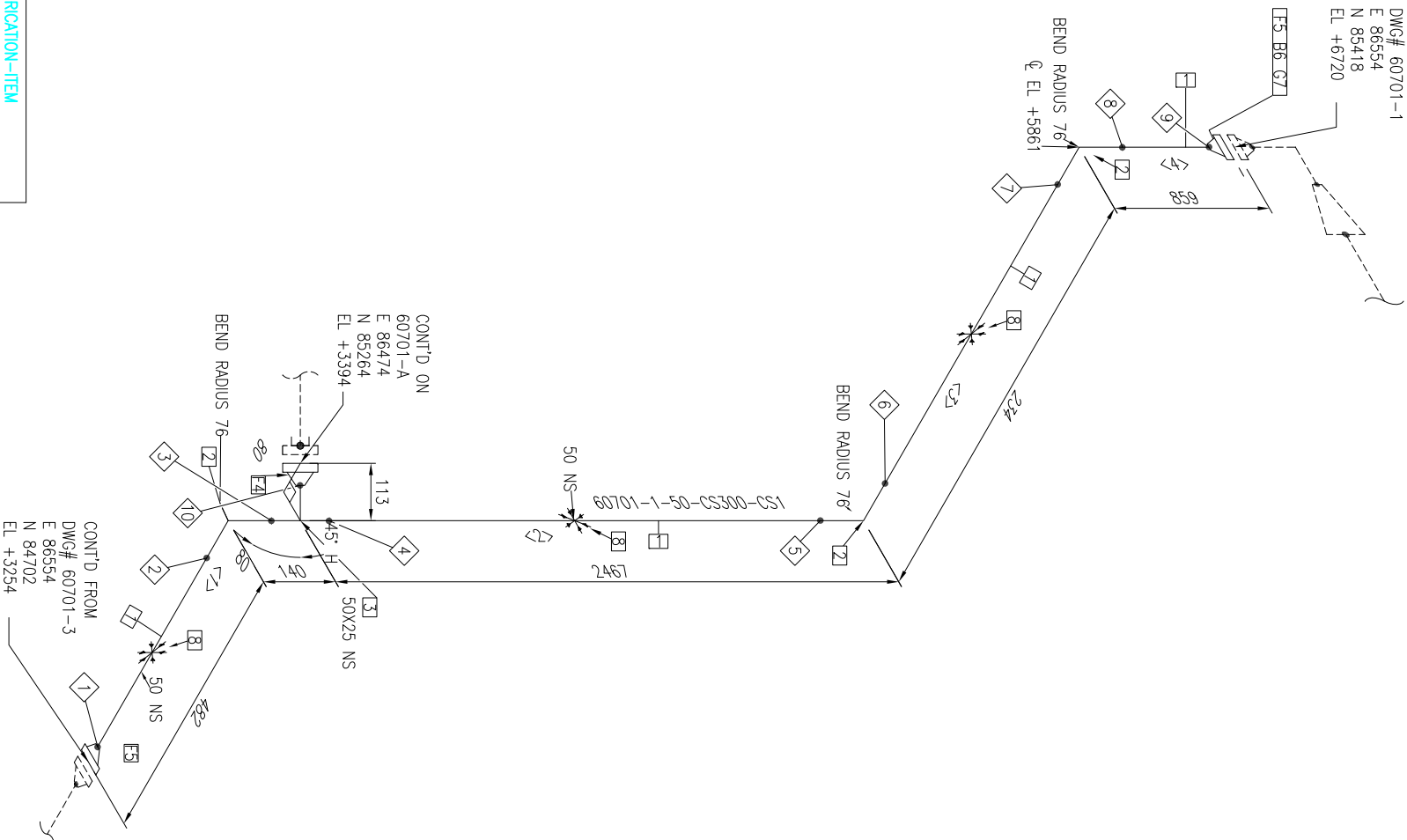




CONT'D ON
DWG# 60701-1
E 86554
N 85418
EL +6720



10	25	BUTTWELD	FABRICATION-TIEM
9	50	BUTTWELD	FABRICATION-TIEM
8	50	BUTTWELD	FABRICATION-TIEM
7	50	BUTTWELD	FABRICATION-TIEM
6	50	BUTTWELD	FABRICATION-TIEM
5	50	BUTTWELD	FABRICATION-TIEM
4	50	BUTTWELD	FABRICATION-TIEM
3	50	BUTTWELD	FABRICATION-TIEM
2	50	BUTTWELD	FABRICATION-TIEM
1	50	BUTTWELD	FABRICATION-TIEM
ID	ND	WELD TYPE	CATEGORY

REV.	DESCRIPTION	DATE	DRAWN	CHKD	APPD	SERVICE
0		08/22/24				PIPE SPEC
1		09/04/24				MAX PRESSURE
2		10/30/24				MAX TEMPERATURE
						P&ID DWG
						INSULATION SPEC
						INSULATION THK

BILL OF MATERIALS

ID	QTY	ND	SCH/CLASS	DESCRIPTION
1	3.5M	50	80	PIPE SEAMLESS, SCH80, PE, ASME B36.10, ASTM A106 GR B
2	3	50	80	ELBOW 90 LR, SCH 80, BW, ASME B16.9, ASTM A234 GR WPB
3	1	50X25	40	TEE (RED), SCH 80, BW, ASME B16.9, ASTM A234-WPB
FLANGES				
4	1	25	80	FLANGE WN, SCH80, 300 LB, RF, ASME B16.5, ASTM A-105N
5	2	50	300	FLANGE WN, 300 LB, RF, ASME B16.5, ASTM A105
FASTENERS				
6	8	16X89	300	BOLT SET, RF, 300 LB, STUD BOLT
7	1	50	300	GASKET, SWG, 1/8" THK, RF, 300 LB, ASME B16.20, CS/GRAPHITE
PIPE SUPPORTS				
8	3	50		U-CLAMP

CUT PIECE LIST				
ID	LENGTH	ND	END1	END2
1	336MM	50	BEVEL	BEVEL
2	2328MM	50	BEVEL	BEVEL
3	82MM	50	BEVEL	BEVEL
4	710MM	50	BEVEL	BEVEL

- NOTES:
1. ALL TAPPED BRANCHES TO INCLUDE TWO (2) GUSSETS LOCATED 90 DEGREES APART.
 2. ALL SUPPORT WELDS SHALL BE CONTINUOUSLY WELDED.
 3. MATERIAL TEST REPORTS ARE REQUIRED.
 4. CHАРPY IMPACT TESTS FOR LOW TEMP. MATERIALS ARE REQUIRED FROM EITHER THE MANUFACTURER OR FABRICATOR.
 5. 5% RADIOGRAPHIC EXAMINATION IS REQUIRED FOR EACH WELDER.
 6. WELDER LOG SHALL BE PROVIDED FOR INSPECTION.
 7. SQUARENESS OF ALL JOINTS SHALL FOLLOW TOLERANCE ALLOWABLE LIMITS.

PROJECT NAME:
MPE007

TITLE:
MPE007

DRAWING NUMBER:
60701-2

LINE NO:
60701

SCALE:
N.T.S.

SHEET:
2 OF **4**

REV:
2