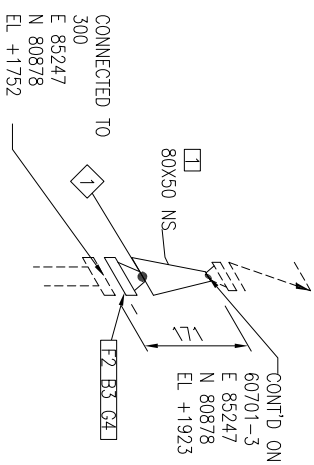




BILL OF MATERIALS				
ID	QTY	ND	SCH/CLASS	DESCRIPTION
FITTINGS				
1	1	80X50	80	REDUCER (CONC), BW, ASME B16.9-SCH80, ASTM A234 GR WPB
FLANGES				
2	1	80	300	FLANGE NW, 300 LB, RF, ASME B16.5, ASTM A105
FASTENERS				
3	8	20X108	300	BOLT SET, RF, 300 LB, STUD BOLT
4	1	80	300	GASKET, SMG, 1/8" THK, RF, 300 LB, ASME B16.20, CS/GRAPHITE



ID	ND	TYPE	CATEGORY	REV.	DESCRIPTION	DATE	DRAWN	CHKD	APPD	SERVICE	PIPE SPEC	MAX PRESSURE	MAX TEMPERATURE	P&ID DWG	INSULATION SPEC	INSULATION THK
1	80	BUTTWELD	FABRICATION-ITEM	0		08/22/24										
				1		09/04/24										
				2		10/30/24										

<p>NOTES:</p> <ol style="list-style-type: none"> <li>ALL TAPPED BRANCHES TO INCLUDE TWO (2) GUSSETS LOCATED 90 DEGREES APART.</li> <li>ALL SUPPORT WELDS SHALL BE CONTINUOUSLY WELDED.</li> <li>MATERIAL TEST REPORTS ARE REQUIRED.</li> <li>CHARPY IMPACT TESTS FOR LOW TEMP. MATERIALS ARE REQUIRED FROM EITHER THE MANUFACTURER OR FABRICATOR.</li> <li>5% RADIOGRAPHIC EXAMINATION IS REQUIRED FOR EACH WELDER.</li> <li>WELDER LOG SHALL BE PROVIDED FOR INSPECTION.</li> <li>SQUARENESS OF ALL JOINTS SHALL FOLLOW TOLERANCE ALLOWABLE LIMITS.</li> </ol>										
<p>PROJECT NAME:</p> <p style="text-align: center;"><b>MPE007</b></p>										
<p>TITLE:</p>										
<p>DRAWING NUMBER:</p> <p style="text-align: center;"><b>60701-4</b></p>										
LINE NO:	<b>60701</b>		AREA:			UNIT:			TYPE:	
JOB NUMBER:			SCALE:	<b>N.T.S.</b>		SHEET:	<b>4</b> OF <b>4</b>		REV:	<b>2</b>