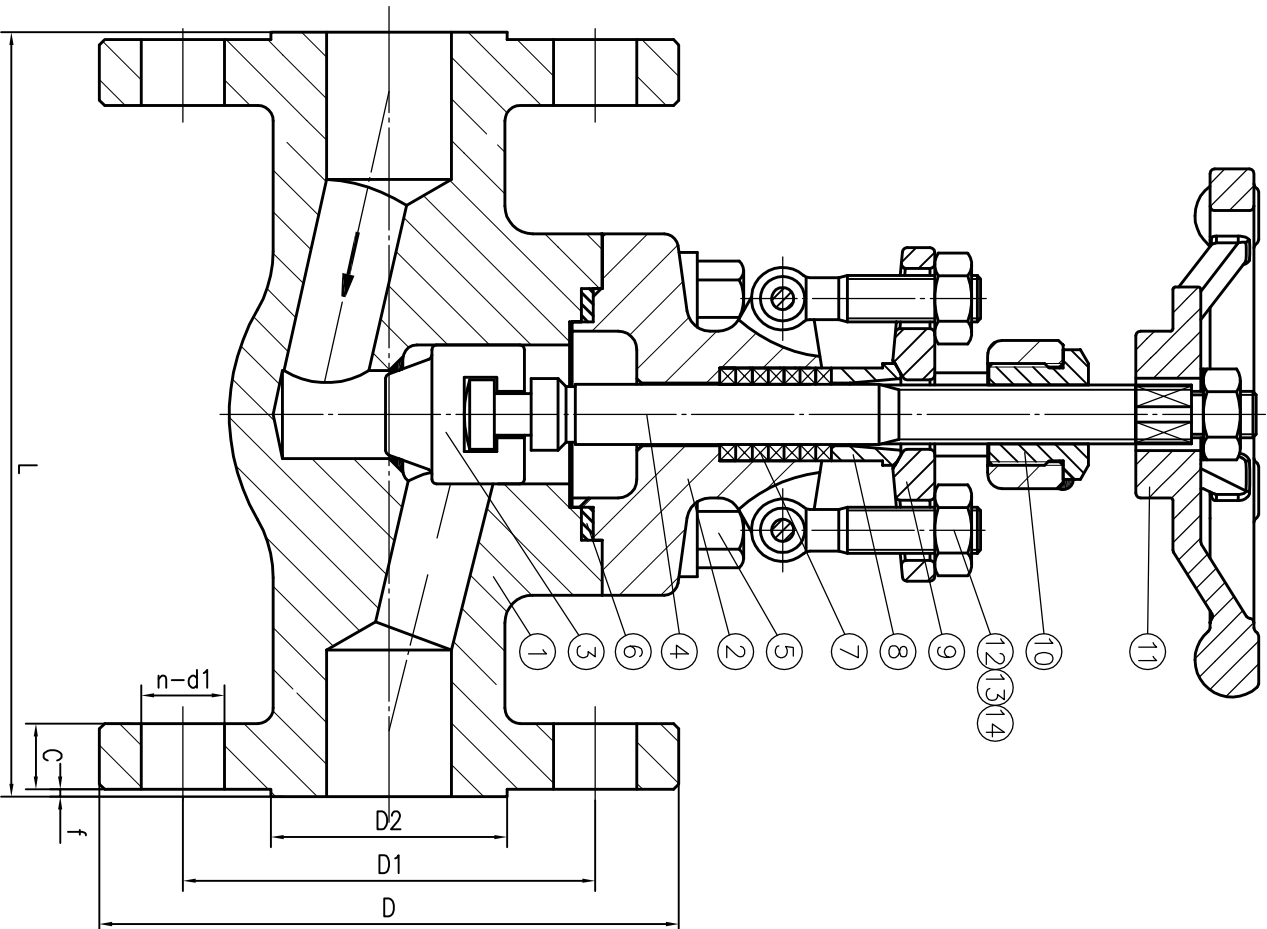


Tag number:
 GLO-RU0001A02
 GLO-RU0001B02

6	1	203	50.8	88.9	125	15.9	2	4-ø19
NO	NPS	L	D2	D1	D	C	f	n-d1

WEIGHT: ≈6.8 Kg



Performance Specification	
Nominal Pressure	300LB
Shell test	7.8
Back seal test	5.7
Seat test	5.7
Gas test	0.4~0.7
Working Temperature	-20~425
Medium:	water oil & gas

Technical Specification	
Design and manufacture	API 602
Face-to-face	ASME B16.10
Flanged ends	ASME B16.5(RF)
Pressure-Temperature class	ASME B16.34
Inspection and test	API 598

7	Packing	Graphite	14	Nut	ASTM A194 7M
6	Gasket	S.S+Graphite	13	Eyebolt	ASTM A320 L7M
5	Bolt	ASTM A320 L7M	12	Pin	C.S
4	Stem	ASTM A182 F316	11	Hand Wheel	Malleable iron
3	Disc	ASTM A182 F316+STL	10	Stem Nut	ANSI 1045
2	Bonnet	ASTM A350 LF2	9	Gland Flange	ASTM A350 LF2
1	Body	ASTM A350 LF2	8	Gland	ASTM A276 410
NO.	PART NAME	MATERIAL	NO.	PART NAME	MATERIAL

Class 300			
NPS 1			
GLOBE VALVE			
MARK QTY	FILE NO.	SIGN	DATE
DESIGN	JASON	STANDARD	
CHECK		APPROVE	S.Parker
TECHNOLOGY			

ASSEMBLY DRAWING	
DRAW REV.	

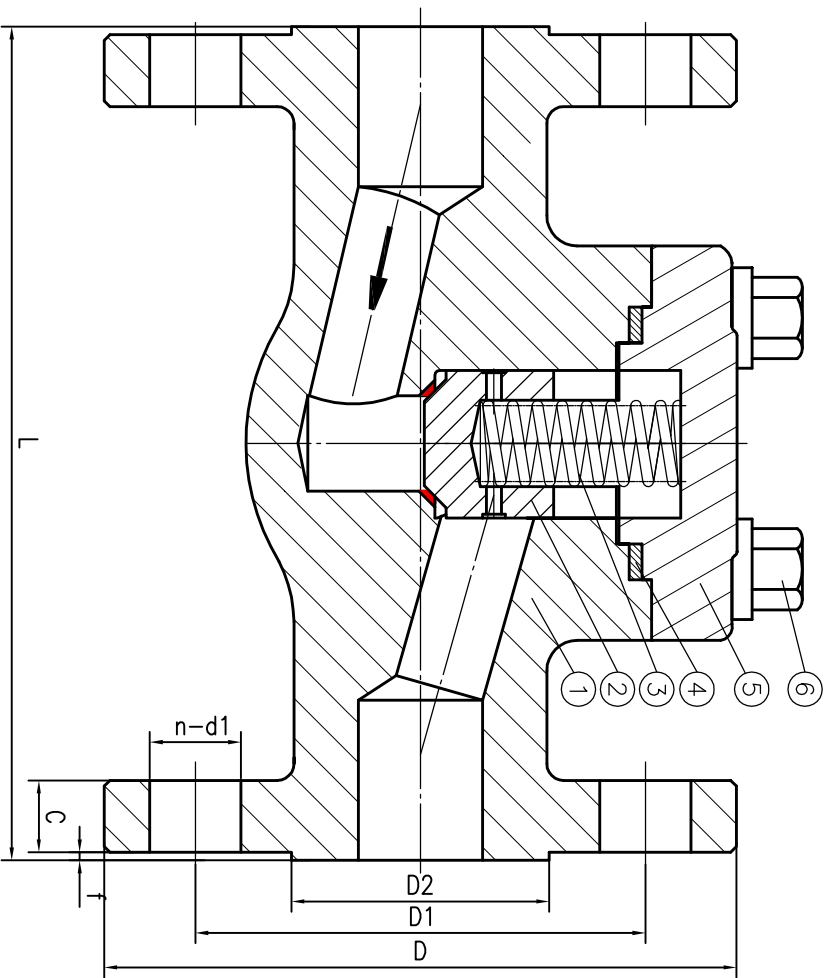


CHECKED BY
 PRINTED BY
 OLD DRAWING NO.
 BASED DRAWING NO.
 SIGNATURE
 DATE

tag number:
 CHV-RU0001A04
 CHV-RU0001B04

16	1	203	50.8	88.9	125	15.9	2	4-φ19
NO	NPS	L	D2	D1	D	C	f	n-d1

WEIGHT: ≈6 Kg



Performance Specification	
Nominal Pressure	300LB
Shell test	7.8 MPa
Back seal test	--
Seat test	5.7
Gas test	--
Working Temperature	-40~300 °C
Medium: water oil & gas	

Technical Specification	
Design and manufacture	API 602
Face-to-face	ASME B16.10
Flanged ends	ASME B16.5(RF)
Pressure-Temperature class	ASME B16.34
Inspection and test	API 598

3	Spring	304SS	6	Bolt	ASTM A320 L7M
2	Disc	ASTM A182 F316+STL	5	Bonnet	ASTM A350 LF2
1	Body	ASTM A350 LF2	4	Gasket	S.S+Graphite
NO.	PART NAME	MATERIAL	NO.	PART NAME	MATERIAL

MARK	QTY	FILE NO.	SIGN	DATE
DESIGN	JASON	STANDARD		
CHECK		APPROVE	S.Parker	
TECHNOLOGY				

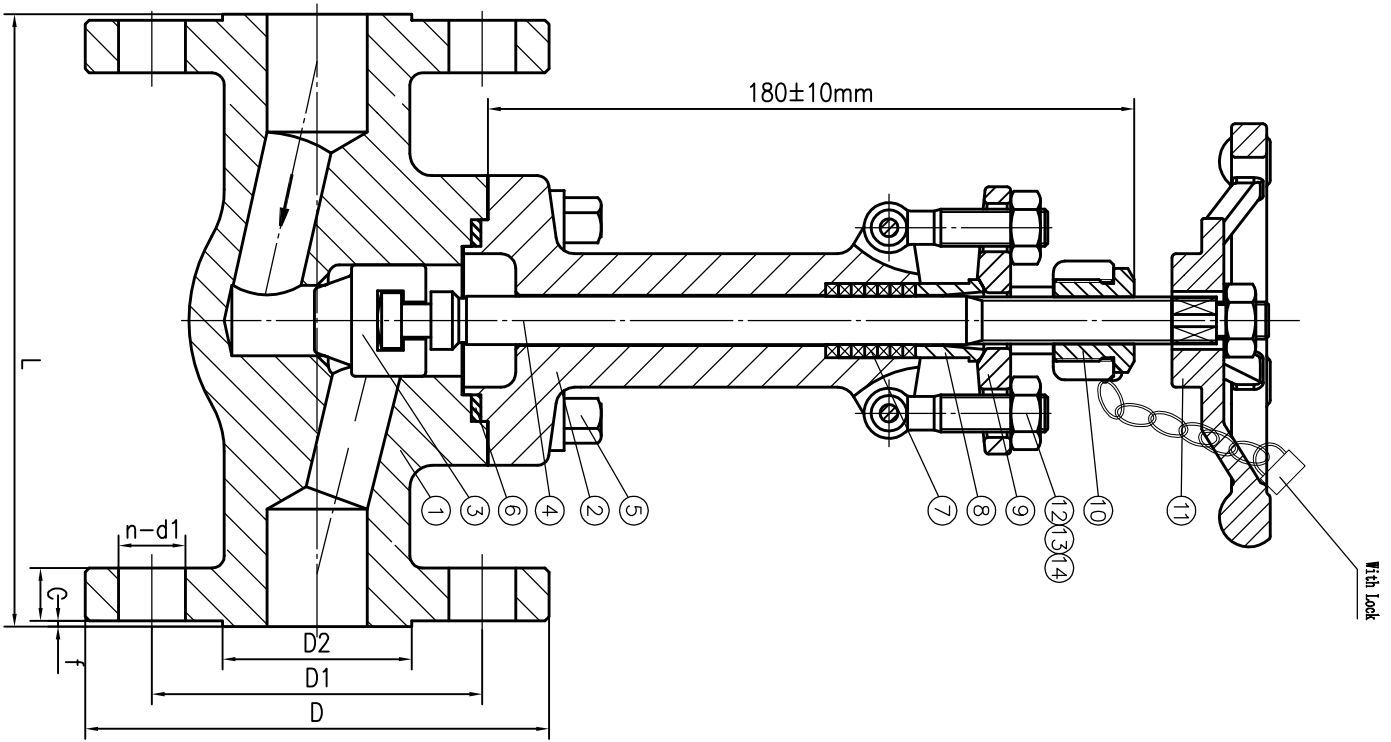
Class 300	
NPS 1	
Piston Check Valve	
ASSEMBLY DRAWING	
DRAW REV.	
METALLUM	

CHECKED BY
 PRINTED BY
 OLD DRAWING NO.
 BASED DRAWING NO.
 SIGNATURE
 DATE

Tag number:
GLO-RU0001A03
GLO-RU0001B03

19	1	203	50.8	88.9	125	15.9	2	4-ø19
NO	NPS	L	D2	D1	D	C	f	n-d1

WEIGHT: ≈8.6 Kg



Performance Specification	
Nominal Pressure	300LB
Shell test	7.8 MPa
Block seal test	5.7 MPa
Seat test	5.7 MPa
Gas test	0.4~0.7 MPa
Working Temperature	-46~300 °C
Medium:	water oil & gas

Technical Specification	
Design and manufacture	API 602
Face-to-face	ASME B16.10
Flanged ends	ASME B16.5(RF)
Pressure-Temperature class	ASME B16.34
Inspection and test	API 598

7	Packing	Graphite	14	Nut	ASTM A194 7M
6	Gasket	S.S+Graphite	13	Eyebolt	ASTM A320 L7M
5	Bolt	ASTM A320 L7M	12	Pin	C.S
4	Stem	ASTM A182 F316	11	Hand Wheel	Malleable iron
3	Disc	ASTM A182 F316+STL	10	Stem Nut	ANSI 1045
2	Bonnet	ASTM A350 LF2	9	Gland Flange	ASTM A350 LF2
1	Body	ASTM A350 LF2	8	Gland	ASTM A276 410
NO.	PART NAME	MATERIAL	NO.	PART NAME	MATERIAL

MARK QTY / FILE NO.		SIGN		DATE	
DESIGN	JASON	STANDARD			
CHECK		APPROVE	S.Parker		
TECHNOLOGY					

Class 300		DRAW REV.
NPS 1		
GLOBE VALVE		
ASSEMBLY DRAWING		



CHECKED BY
PRINTED BY
OLD DRAWING NO.
BASED DRAWING NO.
SIGNATURE
DATE

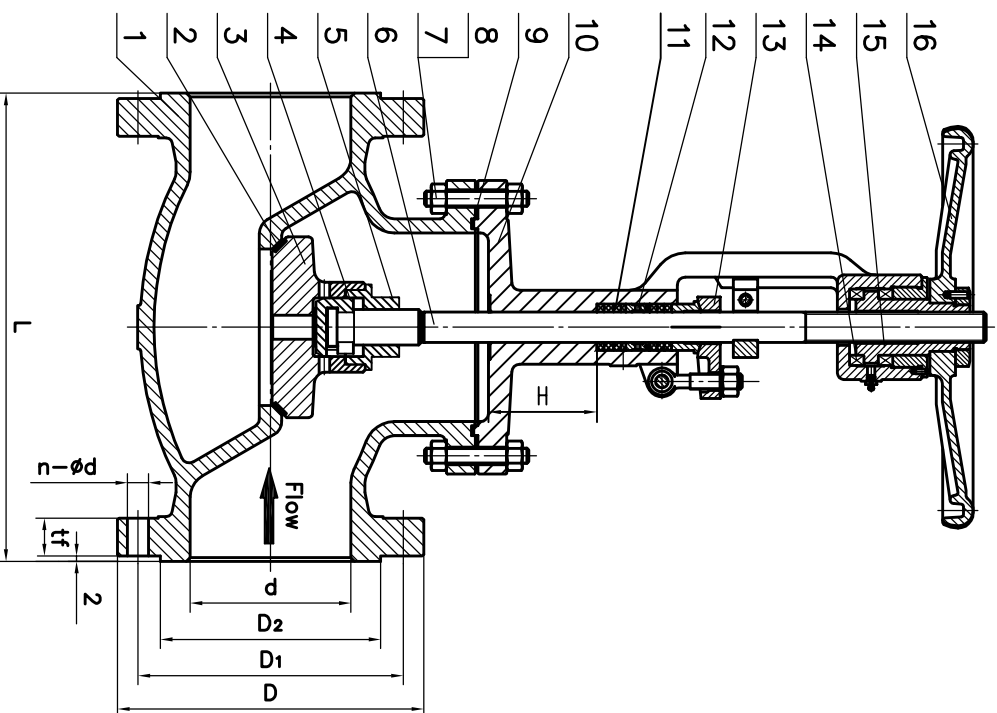
Specification Standard Sheet		
Shell Test Pressure	7.7	MPa
High Pressure Seal Test	5.7	
Back Seat Seal Pressure Test	5.7	
Low Pressure Seal Test	0.6	

Tag number:
GL0-RU0001A04
GL0-RU0001B04

WEIGHT: ≈140 Kg

Item	Nominal Diameter		Main Dimension mm							
	Inch	mm	d	D	D1	D2	tf	n-ød	L	H
27	6"	150	152	320	269.9	215.9	35.1	112-ø22	444	100

Temperature and Pressure	ASME B16.34
Design and Manufacture	BS 1873
Face to Face Dimensions	ASME B16.10
Flange Ends Dimensions	ASME B16.5
Inspection and Test	API 598



16	Hand Wheel	ASTM A536 60-40-18	
15	Plane Bearing	ASTM A295 52100	
14	Stem Nut	Copper Alloy	
13	Gland Flange	ASTM A352 LCB	
12	Stem Packing	Flexible Graphite	
11	Packing Ring	ASTM A276 304	
10	Bonnet	ASTM A352 LCB	
9	Winded Gasket	Graphite+SS304	
8	Hex. Nut	ASTM A194 7	
7	Bonnet Bolt	ASTM A320 L7	
6	Stem	ASTM A182 F316	
5	Disc Nut	SS316	
4	Small Disc	ASTM A182 F316	
3	Large Disc	ASTM A182 F316	
2	Valve Seal	INT+STL6	
1	Body	ASTM A352 LCB	
No	Parts Name	Parts Material	Remarks

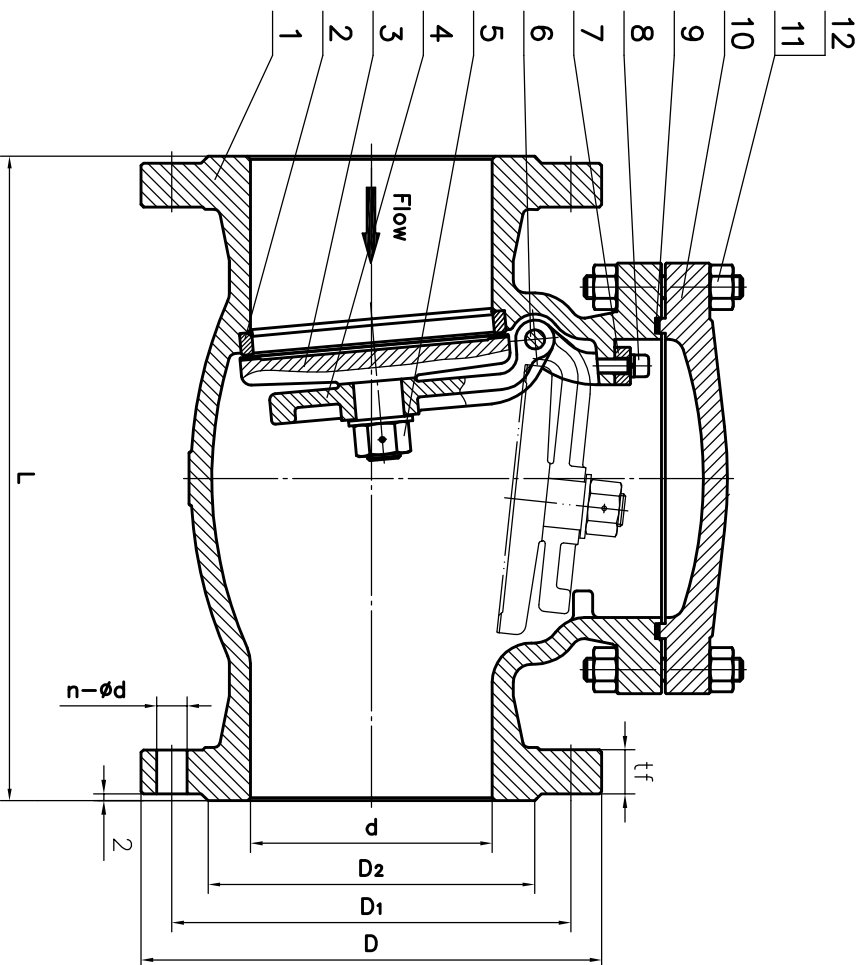
MARK QTY	FILE NO.	SIGN	DATE	NPS 6" BALL VALVE	DRAW REV.
DESIGN	JASON	STANDARD			
CHECK		APPROVE	S.Parker	ASSEMBLY DRAWING	METALLUM
TECHNOLOGY					

Specification Standard Sheet		
Shell Test Pressure	7.7	MPa
High Pressure Seal Test	5.7	
Suitable Temperature	-10~400°C	
Suitable Medium	Water, Steam, Oil etc	

WEIGHT: ≈19 Kg

Item	Nominal Diameter		Main Dimension						
	inches	mm	d	D	D1	D2	tf	n-φd	L
29	2"	50	49	165	127	92.1	20.6	8-φ19	267

Temperature and Pressure	ASME B16.34
Design and Manufacture	API 6D
Face to Face Dimensions	ASME B16.10
Flanged Fittings Dimensions	ASME B16.5
Inspection and Test	API 598



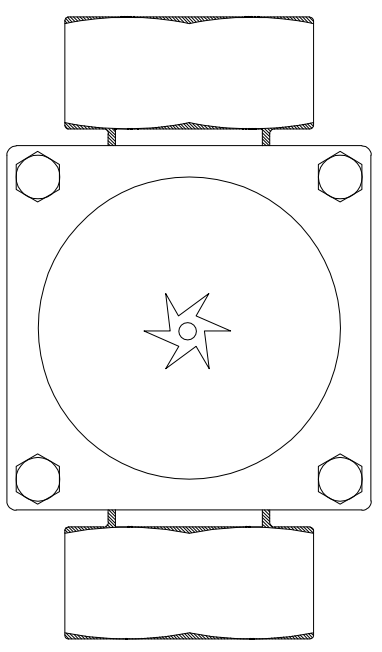
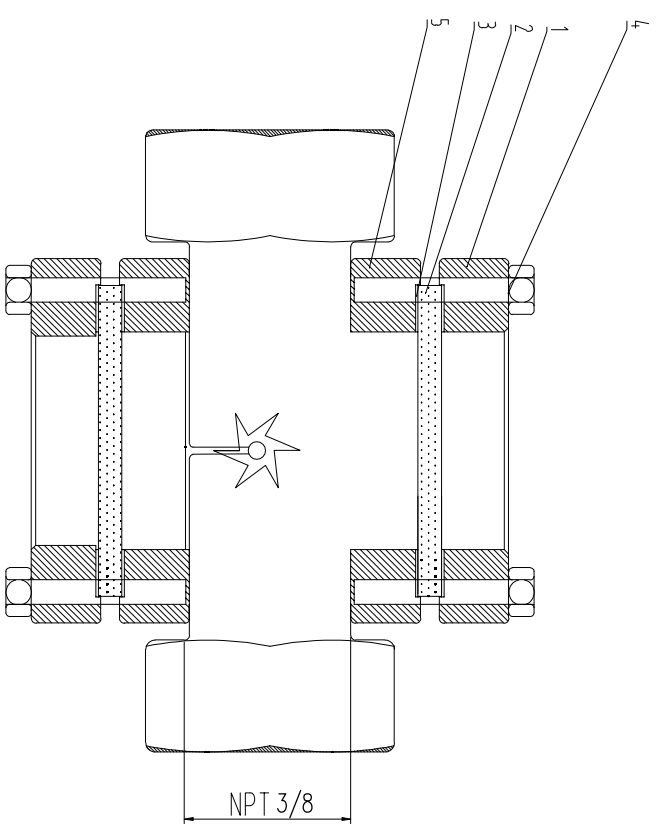
12	Cover Bolt	ASTM A193 B7	
11	Cover Nut	ASTM A194 2H	
10	Cover	ASTM A216 WCB	
9	Gasket	Graphite+SS	
8	Yoke Bolt	Carbon Steel	
7	Yoke	ASTM A216 WCB	
6	Pin	ASTM A276 316	
5	Disc Nut	Carbon Steel	
4	Hinge	ASTM A216 WCB	
3	Disc	ASTM A182 F316	
2	Seat Ring	ASTM A105+STL6	
1	Body	ASTM A216 WCB	
No	Parts Name	Parts Material	Remarks

MARK QTY	FILE NO.	SIGN	DATE	Class 300 NPS 2 CHECK VALVE ASSEMBLY DRAWING	DRAW REV.
DESIGN	JASON	STANDARD			
CHECK		APPROVE	S.Parker		
TECHNOLOGY					

METALLUM


WEIGHT: ~Kg

31&32
NO 3/8
NPS



Performance Specification	
Nominal Pressure	2.0
Shell test	2.5
Back seal test	--
Seat test	--
Gas test	--
Working Temperature	-29~120 °C
Medium: water oil & gas	

6	Impeller	PTFE
5	Body	SS316
4	Bolt	SS304
3	Gasket	PTFE
2	Window	Glass
1	Bonnet	SS304
NO.	PART NAME	MATERIAL

MARK	QTY	FILE NO.	SIGN	DATE	PN20 NPS 3/8 SIGHT GLASS	DRAW REV.
DESIGN	JASON	STANDARD				
CHECK		APPROVE	S.Parker		ASSEMBLY DRAWING	
TECHNOLOGY						

CHECKED BY
PRINTED BY
OLD DRAWING NO.
BASED DRAWING NO.
SIGNATURE
DATE

