

RAL 7035

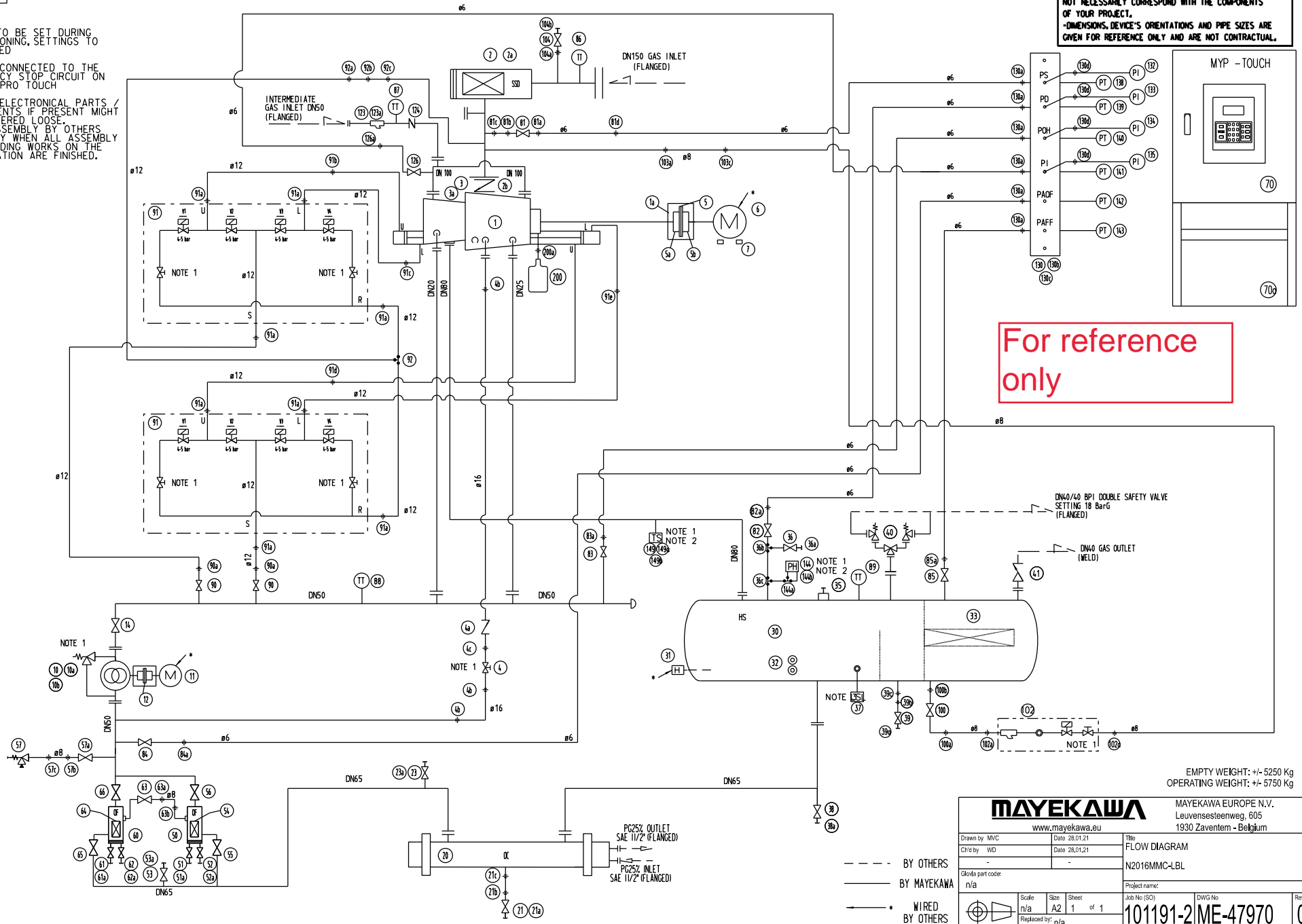
NOTE 1: TO BE SET DURING COMMISSIONING, SETTINGS TO BE LOGGED

NOTE 2: CONNECTED TO THE EMERGENCY STOP CIRCUIT ON THE MYPRO TOUCH

NOTE 3: ELECTRICAL PARTS / INSTRUMENTS IF PRESENT MIGHT BE DELIVERED LOOSE. FINAL ASSEMBLY BY OTHERS AND ONLY WHEN ALL ASSEMBLY AND WELDING WORKS ON THE INSTALLATION ARE FINISHED.

FOR REFERENCE USE ONLY !

-THE COMPONENTS DEPICTED ON OUR REFERENCE UNITS DO NOT NECESSARILY CORRESPOND WITH THE COMPONENTS OF YOUR PROJECT.  
-DIMENSIONS, DEVICE'S ORIENTATIONS AND PIPE SIZES ARE GIVEN FOR REFERENCE ONLY AND ARE NOT CONTRACTUAL.



For reference only

EMPTY WEIGHT: +/- 5250 Kg  
OPERATING WEIGHT: +/- 5750 Kg

**MAYEKAWA**  
www.mayekawa.eu

MAYEKAWA EUROPE N.V.  
Leuvensesteenweg, 605  
1930 Zaventem - Belgium

Drawn by: MVC	Date: 28.01.21	Title: FLOW DIAGRAM
Chk by: WD	Date: 28.01.21	N2016MMC-LBL
Globe part code: n/a		Project name:
Scale: n/a	Size: A2	Sheet: 1 of 1
Replaced by: n/a	Job No (SO):	DWG No: 101191-2/ME-47970
		Rev: 0

THIS DOCUMENT MUST BE TREATED AS CONFIDENTIAL. IT MUST NOT BE COPIED, DISTRIBUTED TO OTHERS OR ITS CONTENTS BE USED OR COMMUNICATED EITHER IN WHOLE OR IN PART WITHOUT PERMISSION OF MAYEKAWA EUROPE N.V. ALL RIGHTS ARE RESERVED.

- BY OTHERS
- BY MAYEKAWA
- \* WIRED BY OTHERS