

# INSTUMENT HOOK-UP DIAGRAM

RO	12.07.2020	ISSUED FOR APPROVAL (IFA)	P.BORJIAN	S.BEHNIAFAR	R.MEMAR
REV.	DATE	DESCRIPTION	DRAWING BY	CHKD BY	APPD BY

STYRENE PARK OFFSITE								
TITLE: INSTRUMENT HOOK-UP DIAGRAM								
DRAWING NO:	PRJ. CODE	AREA	PHASE	DISCIPLINE	DOC. TYPE	SEQ. NO.	REV.	SHEET
E1027	000	ED	IN	DIG	007	RO		1 OF 20
CAD PRODUCED DRAWING -NO MANUAL REVISION ALLOWED						SCALE: A4		


CLIENT:

Toase-ehe Park Sanati  
Gohar Ofogh Petrochemical Co.





CONSULTANT:

BINA EPC CONTRACTOR CO.



## TABLE OF CONTENT

SHT.	DESCRIPTION	R0	R1	R2	R3	R4
01	COVER SHEET	X				
02	TABLE OF CONTENT	X				
03	GENERAL NOTES	X				
04	BILL OF MATERIALS	X				
05	D.P. FLOW TRANSMITTER-GAS SERVICE	X				
06	D.P. FLOW TRANSMITTER-LIQUID SERVICE	X				
07	D.P. FLOW TRANSMITTER-GAS SERVICE (D&D/2)	X				
08	PRESSURE TRANSMITTER-GAS SERVICE	X				
09	PRESSURE TRANSMITTER-LIQUID SERVICE	X				
10	PRESSURE TRANSMITTER-STEAM SERVICE	X				
11	PRESSURE GAUGE	X				
12	PRESSURE GAUGE WITH SIPHON	X				
13	PRESSURE GAUGE WITH OVER PRESSURE	X				
14	PRESSURE GAUGE WITH DIAPHRAGM SEAL	X				
15	LEVEL TRANSMITTER-RADAR TYPE	X				
16	D.P. LEVEL TRANSMITTER-DIAPHRAGM SEAL	X				
17	TEMPERATURE GAUGE-BIMETAL	X				
18	RTD / TEMPERATURE TRANSMITTER	X				
19	CONTROL VALVE WITH E/P POSITIONER	X				
20	ON/OFF VALVE WITHOUT AIR RESERVOIR	X				

STYRENE PARK OFFSITE		CLIENT:		Toase-ehe Park Sanati Gohar Ofogh Petrochemical Co.				
TITLE:		INSTRUMENT HOOK-UP DIAGRAM		CONSULTANT:				
DRAWING NO:	PRJ. CODE	AREA	PHASE	DISCIPLINE	DOC. TYPE	SEQ. NO.	REV.	SHEET
E1027	000	ED	IN	DIG	007	R0		2 OF 20
CAD PRODUCED DRAWING -NO MANUAL REVISION ALLOWED						SCALE: A4		BINA EPC CONTRACTOR CO.



## GENERAL NOTES:

1. IT IS EMPHASISED THAT THE DRAWINGS ARE TYPICAL AND THAT EACH DESIGN, ESPECIALLY OF FLOW AND PRESSURE INSTRUMENTS REQUIRES CAREFUL CONSIDERATION OF A VARIETY OF FACTORS. IT IS OF UTMOST IMPORTANCE TO KNOW THE PHYSICAL CHARACTERISTICS AND THE OPERATING CONDITIONS OF THE PROCESS FLUID AND HOW THE PHYSICAL CONDITION OF THE MEDIUM WILL BE IN THE IMPULSE LINE. EACH INSTALLATION SHALL BE DESIGNED SO THAT ANY RESULTS OF PHENOMENA LIKE, VARYING LIQUID HEAD, SOLIDIFICATION, FREEZING, EVAPORATION, SEDIMENTATION, REFLUX, ETC. DO NOT AFFECT THE MEASUREMENTS OR DAMAGE THE INSTALLATION.
2. RECOMMENDED LENGTH OF IMPULSE TUBING FOR HIGH TEMPERATURE SERVICE (ABOVE 150 °C TO 500°C) SHALL BE 4–8 METERS.
3. THE PROCESS TUBING IS TO BE SUPPORTED PROPERLY AND MUST NOT SUBJECT THE INSTRUMENT TO STRAIN OR VIBRATION. ARRANGE TUBING TO PREVENT STRESSES ON THE INSTRUMENT DUE TO THERMAL EXPANSION OF THE PROCESS.
4. DRAIN FACILITY ON ALL INSTRUMENTS WILL BE EASILY ACCESSIBLE FOR MAINTENANCE PEOPLE.
5. INSTRUMENT SHALL BE REMOVABLE WITHOUT DEFORMATION OF IMPULSE LINES.
6. AIR PIPING AND TUBING IS TO BE SUPPORTED PROPERLY AND MUST NOT SUBJECT THE INSTRUMENT TO STRAIN OR VIBRATION.

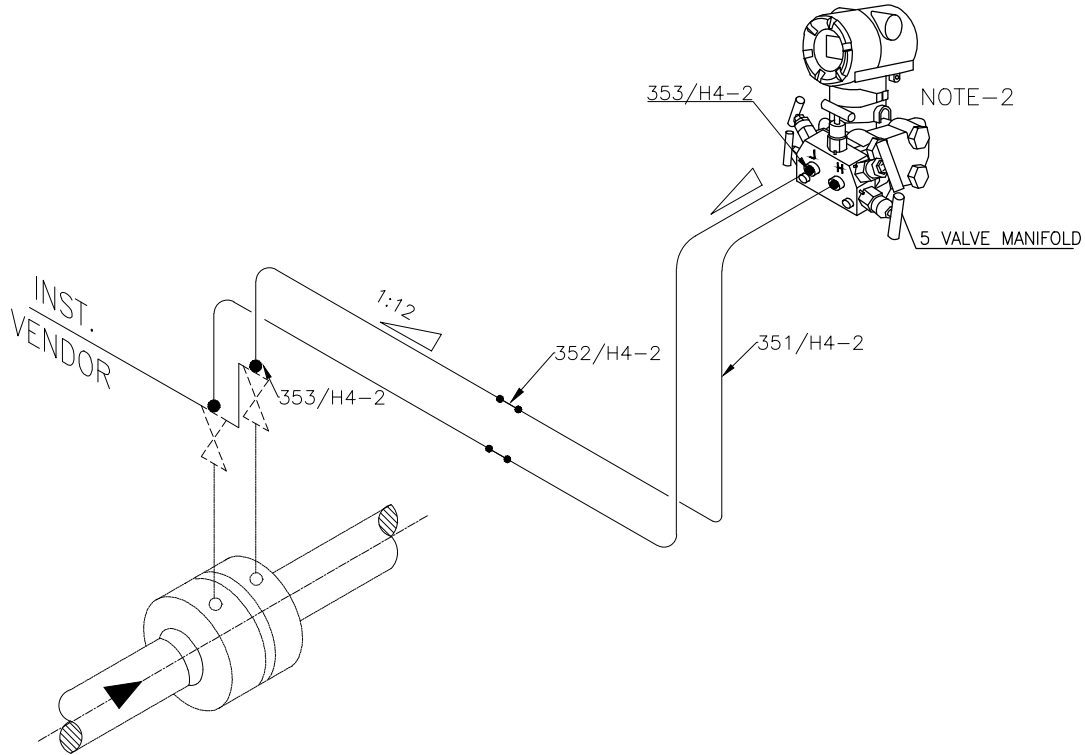
STYRENE PARK OFFSITE								CLIENT:	
TITLE: INSTRUMENT HOOK-UP DIAGRAM								Toase-ehe Park Sanati Gohar Ofogh Petrochemical Co.	
DRAWING NO:	PRJ. CODE	AREA	PHASE	DISCIPLINE	DOC. TYPE	SEQ. NO.	REV.	SHEET	CONSULTANT:
E1027	000	ED	IN	DIG	007	RO	3 OF 20		<i>BINA EPC CONTRACTOR CO.</i>
CAD PRODUCED DRAWING –NO MANUAL REVISION ALLOWED						SCALE: A4			

BILL OF MATERIALS:

ITEM CODE	QUANTITY	DESCRIPTION	MATERIAL	SIZE
351/H4-2	610 m	SEAMLESS TUBE	316LSS	1/2" OD
352/H4-2	61	UNION CONNECTOR	316LSS	1/2" OD
353/H4-2	118	MALE CONNECTOR	316LSS	1/2"NPTM-1/2"OD
303/00-2	79	NIPPLE	316LSS	1/2"NPTM-100mm
314/J0-2	17	TEE	316LSS	1/2" NPT(F)
318/J4-2	21	HEX. HEAD PLUG	316LSS	1/2" NPT(M)
353/H4-1	19	MALE CONNECTOR	316LSS	1/4"NPTM-1/2"OD
354/H4-2	4	FEMALE CONNECTOR	316LSS	1/2"NPTF-1/2"OD
311/J0-3/2	65	REDUCING COUPLING	316LSS	3/4"NPTF-1/2"NPTF
390/J4-2	2	CONDENSATE POT	316LSS	4x1/2" NPT(F)
316/F0-2	30	UNION	316LSS	1/2" NPT(F)
303/02-2	4	NIPPLE	C-PVC	1/2"NPTM-100mm
318/J6-2	8	HEX. HEAD PLUG	C-PVC	1/2" NPT(M)
331/F2-2	4	GLOBE VALVE	C-PVC	1/2" NPT(F)
353/H4-3	23	MALE CONNECTOR	316LSS	1/4"NPTM-1/4"OD
353/H4-4	23	MALE CONNECTOR	316LSS	1/2"NPTM-1/4"OD
351/H4-1	115 m	SEAMLESS TUBE	316LSS	1/4" OD

STYRENE PARK OFFSITE		CLIENT:							
TITLE: INSTRUMENT HOOK-UP DIAGRAM		Toase-ehe Park Sanati Gohar Ofogh Petrochemical Co. 							
DRAWING NO:	PRJ. CODE	AREA	PHASE	DISCIPLINE	DOC. TYPE	SEQ. NO.	REV.	SHEET	CONSULTANT:
E1027	000	ED	IN	DIG	007	RO	4 OF 20		BINA EPC CONTRACTOR CO. 
CAD PRODUCED DRAWING -NO MANUAL REVISION ALLOWED						SCALE: A4			

# D/P FLOW TRANSMITTER – GAS SERVICE



- NOTES:**
1. SLOPE FROM TRANSMITTER MIN. 1:12
  2. 5-VALVE MANIFOLD 1/2" NPT(F) WILL BE SUPPLIED BY INSTRUMENT VENDOR.

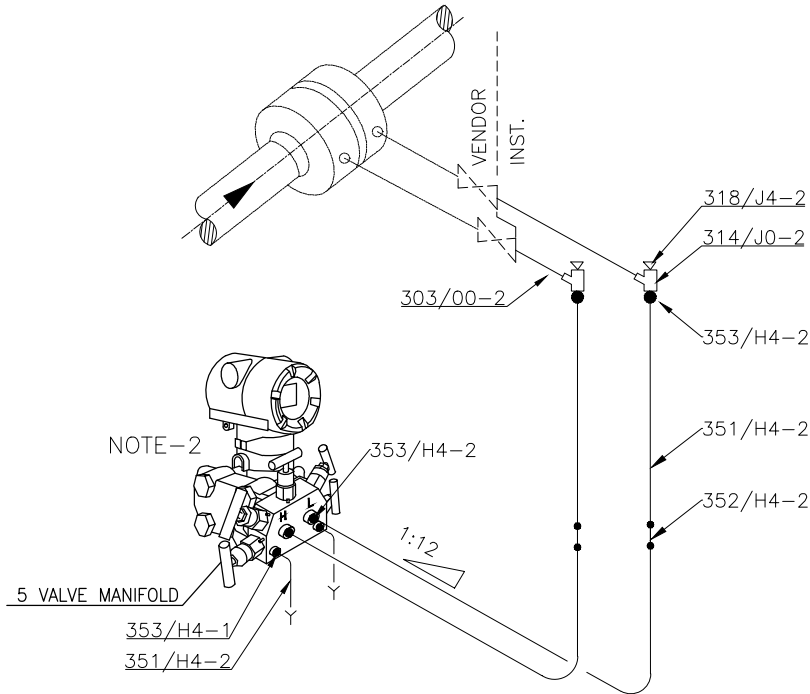
NO	TAG NO.	RATING
1	FT-0101	150# RF
2	FT-0102	150# RF
3	FT-0206	150# RF
4	FT-0207	150# RF
5	FT-0311	150# RF
6	FT-0312	150# RF
7	FT-0501	150# RF
8	FT-0506	150# RF
9	FT-0911	150# RF

BILL OF MATERIAL				
ITEM CODE.	DESCRIPTION	MATERIAL	SIZE	QTY.
351/H4-2	SEAMLESS TUBE	316LSS	1/2" OD	20m
352/H4-2	UNION CONNECTOR	316LSS	1/2" OD	2
353/H4-2	MALE CONNECTOR	316LSS	1/2"NPTM-1/2"OD	4

<b>STYRENE PARK OFFSITE</b>		CLIENT:	
TITLE: <b>INSTRUMENT HOOK-UP DIAGRAM</b>		Toase-ehe Park Sanati Gohar Ofogh Petrochemical Co.	
DRAWING NO: E1027		CONSULTANT:	
PRJ. CODE: 000		BINA EPC CONTRACTOR CO.	
AREA: ED		SCALE: A4	
PHASE: IN		5 OF 20	
DISCIPLINE: DIG		REV. RO	
DOC. TYPE: 007		SHEET	
SEQ. NO. 007		CAD PRODUCED DRAWING –NO MANUAL REVISION ALLOWED	



# D/P FLOW TRANSMITTER – LIQUID SERVICE



- NOTES:**
1. SLOPE FROM PRESSURE TAPPING MIN. 1:12
  2. 5-VALVE MANIFOLD 1/2" NPT(F) WILL BE SUPPLIED BY INSTRUMENT VENDOR.

## BILL OF MATERIAL

ITEM CODE.	DESCRIPTION	MATERIAL	SIZE	QTY.
303/00-2	NIPPLE	316LSS	1/2"NPTM-100mm	2
314/J0-2	TEE	316LSS	1/2" NPT(F)	2
318/J4-2	HEX. HEAD PLUG	316LSS	1/2" NPT(M)	2
351/H4-2	SEAMLESS TUBE	316LSS	1/2" OD	20m
352/H4-2	UNION CONNECTOR	316LSS	1/2" OD	2
353/H4-1	MALE CONNECTOR	316LSS	1/4"NPTM-1/2"OD	2
353/H4-2	MALE CONNECTOR	316LSS	1/2"NPTM-1/2"OD	4

NO	TAG NO.	RATING
1	FT-0942	150# RF
2	FT-0945	150# RF

STYRENE PARK OFFSITE

CLIENT:

Toase-ehe Park Sanati  
Gohar Ofogh Petrochemical Co.



TITLE:  
INSTRUMENT HOOK-UP DIAGRAM

DRAWING NO:	PRJ. CODE	AREA	PHASE	DISCIPLINE	DOC. TYPE	SEQ. NO.	REV.	SHEET
E1027	000	ED	IN	DIG	007	RO	6 OF 20	

CONSULTANT:

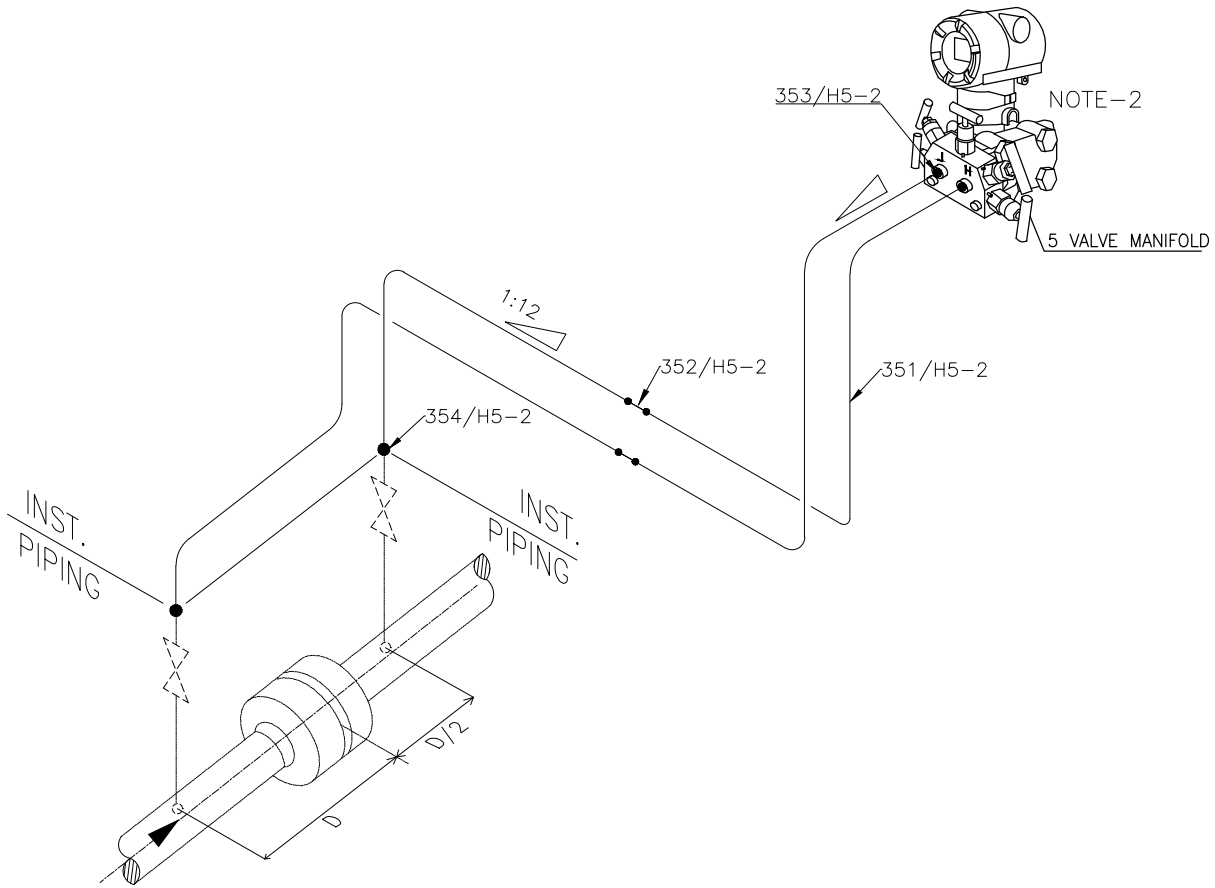
BINA EPC CONTRACTOR CO.



CAD PRODUCED DRAWING –NO MANUAL REVISION ALLOWED

SCALE: A4

# D/P FLOW TRANSMITTER – GAS SERVICE (D & D/2 TAPPING)



- NOTES:**
1. SLOPE FROM TRANSMITTER MIN. 1:12
  2. 5-VALVE MANIFOLD 1/2" NPT(F) WILL BE SUPPLIED BY INSTRUMENT VENDOR.

## BILL OF MATERIAL

ITEM CODE.	DESCRIPTION	MATERIAL	SIZE	QTY.
351/H4-2	SEAMLESS TUBE	316LSS	1/2" OD	20m
352/H4-2	UNION CONNECTOR	316LSS	1/2" OD	2
353/H4-2	MALE CONNECTOR	316LSS	1/2"NPTM-1/2"OD	2
354/H4-2	FEMALE CONNECTOR	316LSS	1/2"NPTF-1/2"OD	2

NO	TAG NO.	RATING
1	FT-0837	600# RF
2	FT-0838	600# RF

STYRENE PARK OFFSITE

CLIENT:

Toase-ehe Park Sanati  
Gohar Ofogh Petrochemical Co.



TITLE:  
INSTRUMENT HOOK-UP DIAGRAM

DRAWING NO:	PRJ. CODE	AREA	PHASE	DISCIPLINE	DOC. TYPE	SEQ. NO.	REV.	SHEET
EI027	000	ED	IN	DIG	007	RO	7 OF 20	

CONSULTANT:

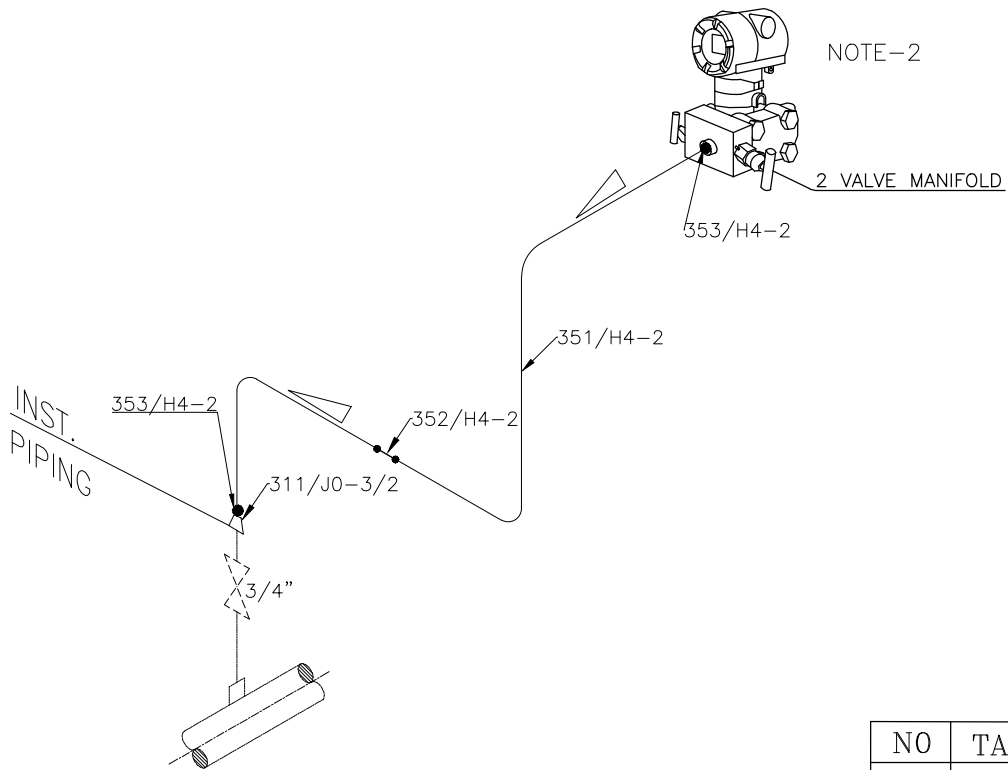
BINA EPC CONTRACTOR CO.



CAD PRODUCED DRAWING –NO MANUAL REVISION ALLOWED

SCALE: A4

**PRESSURE TRANSMITTER – GAS SERVICE**



NOTE-2

- NOTES:**
1. SLOPE FROM TRANSMITTER MIN. 1:12
  2. 2-VALVE MANIFOLD 1/2" NPT(F) WILL BE SUPPLIED BY INSTRUMENT VENDOR.

NO	TAG NO.
1	PT-0101
2	PT-0102
3	PT-0206
4	PT-0207
5	PT-0311
6	PT-0312
7	PT-0522
8	PT-0523
9	PT-0526
10	PT-0524
11	PT-0525
12	PT-0527
13	PT-1833
14	PT-1933
15	PT-1834
16	PT-1934
17	PT-0501
18	PT-0506
19	PT-0911
20	PT-0722

**BILL OF MATERIAL**

ITEM CODE.	DESCRIPTION	MATERIAL	SIZE	QTY.
311/J0-3/2	REDUCING COUPLING	316LSS	3/4"NPTF-1/2"NPTF	1
351/H4-2	SEAMLESS TUBE	316LSS	1/2" OD	10m
352/H4-2	UNION CONNECTOR	316LSS	1/2" OD	1
353/H4-2	MALE CONNECTOR	316LSS	1/2"NPTM-1/2"OD	2

STYRENE PARK OFFSITE

CLIENT:

Toase-ehe Park Sanati  
Gohar Ofogh Petrochemical Co.



TITLE:  
INSTRUMENT HOOK-UP DIAGRAM

PRJ. CODE	AREA	PHASE	DISCIPLINE	DOC. TYPE	SEQ. NO.	REV.	SHEET
EI027	000	ED	IN	DIG	007	RO	8 OF 20

CONSULTANT:

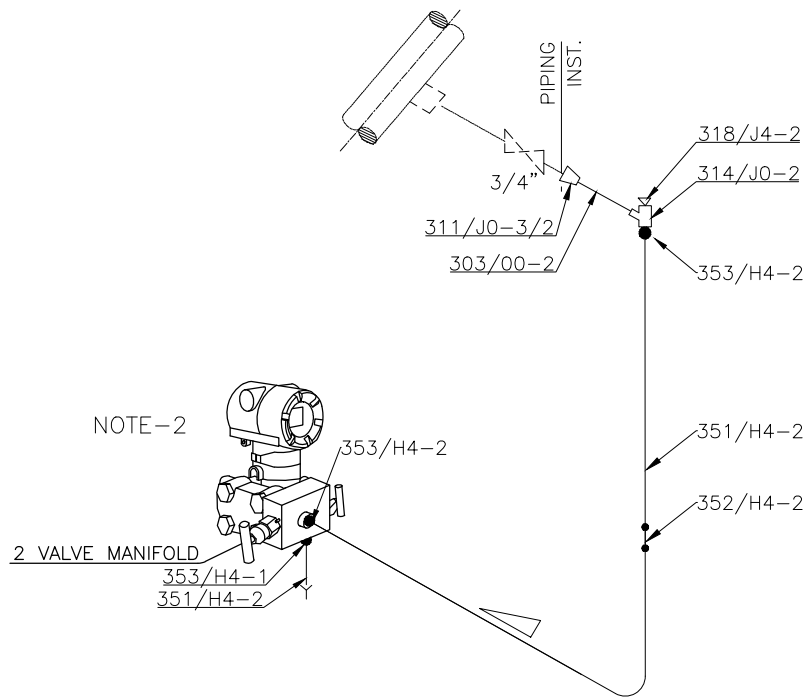
BINA EPC CONTRACTOR CO.



CAD PRODUCED DRAWING –NO MANUAL REVISION ALLOWED

SCALE: A4

# PRESSURE TRANSMITTER – LIQUID SERVICE



NOTE-2

- NOTES:** 1. SLOPE FROM TRANSMITTER MIN. 1:12  
 2. 2-VALVE MANIFOLD 1/2" NPT(F) WILL BE SUPPLIDE BY INSTRUMENT VENDOR.

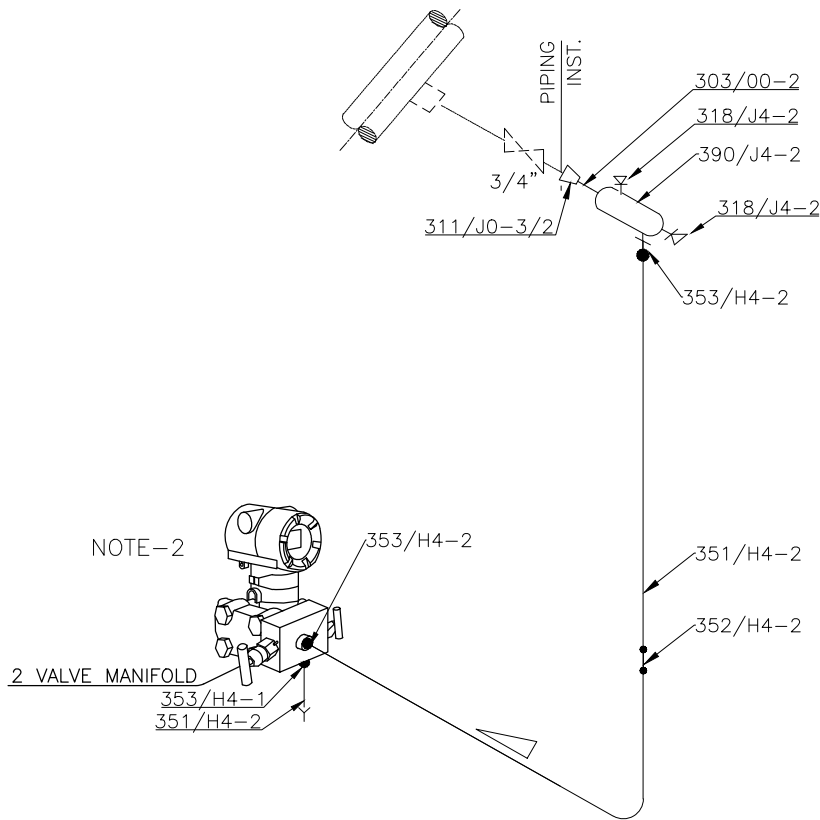
NO	TAG NO.
1	PT-0416
2	PT-0623
3	PT-0724
4	PT-0930
5	PT-1031
6	PT-1236
7	PT-1339
8	PT-1342
9	PT-1443
10	PT-1446
11	PT-1835
12	PT-1851
13	PT-1852

BILL OF MATERIAL				
ITEM CODE.	DESCRIPTION	MATERIAL	SIZE	QTY.
303/00-2	NIPPLE	316LSS	1/2"NPTM-100mm	1
311/J0-3/2	REDUCING COUPLING	316LSS	3/4"NPTF-1/2"NPTF	1
314/J0-2	TEE	316LSS	1/2" NPT(F)	1
318/J4-2	HEX. HEAD PLUG	316LSS	1/2" NPT(M)	1
351/H4-2	SEAMLESS TUBE	316LSS	1/2" OD	10m
352/H4-2	UNION CONNECTOR	316LSS	1/2" OD	1
353/H4-1	MALE CONNECTOR	316LSS	1/4"NPTM-1/2"OD	1
353/H4-2	MALE CONNECTOR	316LSS	1/2"NPTM-1/2"OD	2

STYRENE PARK OFFSITE		CLIENT:	
TITLE: INSTRUMENT HOOK-UP DIAGRAM		Toase-ehe Park Sanati Gohar Ofogh Petrochemical Co.	
DRAWING NO: E1027		CONSULTANT:	
PRJ. CODE	AREA	PHASE	DISCIPLINE
E1027	000	ED	IN
DOC. TYPE	SEQ. NO.	REV.	SHEET
DIG	007	RO	9 OF 20
CAD PRODUCED DRAWING -NO MANUAL REVISION ALLOWED		SCALE: A4	
		BINA EPC CONTRACTOR CO.	



# PRESSURE TRANSMITTER – STEAM SERVICE



- NOTES:**
1. SLOPE FROM TRANSMITTER MIN. 1:12
  2. 2-VALVE MANIFOLD 1/2" NPT(F) WILL BE SUPPLIED BY INSTRUMENT VENDOR.
  3. TO BE FILLED UP WITH COLD PROCESS FLUID BEFORE START UP.
  4. PROVIDE LONG IMPULSE LINE FOR HIGH TEMP. SERVICE.

## BILL OF MATERIAL

ITEM CODE.	DESCRIPTION	MATERIAL	SIZE	QTY.
303/00-2	NIPPLE	316LSS	1/2"NPTM-100mm	1
311/J0-3/2	REDUCING COUPLING	316LSS	3/4"NPTF-1/2"NPTF	1
318/J4-2	HEX. HEAD PLUG	316LSS	1/2" NPT(M)	2
351/H4-2	SEAMLESS TUBE	316LSS	1/2" OD	10m
352/H4-2	UNION CONNECTOR	316LSS	1/2" OD	1
353/H4-1	MALE CONNECTOR	316LSS	1/4"NPTM-1/2"OD	1
353/H4-2	MALE CONNECTOR	316LSS	1/2"NPTM-1/2"OD	2
390/J4-2	CONDENSATE POT	316LSS	4x1/2" NPT(F)	1

NO	TAG NO.
1	PT-0837
2	PT-0838

STYRENE PARK OFFSITE

CLIENT:

Toase-ehe Park Sanati  
Gohar Ofogh Petrochemical Co.



TITLE:  
INSTRUMENT HOOK-UP DIAGRAM

DRAWING NO:	PRJ. CODE	AREA	PHASE	DISCIPLINE	DOC. TYPE	SEQ. NO.	REV.	SHEET
E1027	000	ED	IN	DIG	007	RO	10 OF 20	

CONSULTANT:

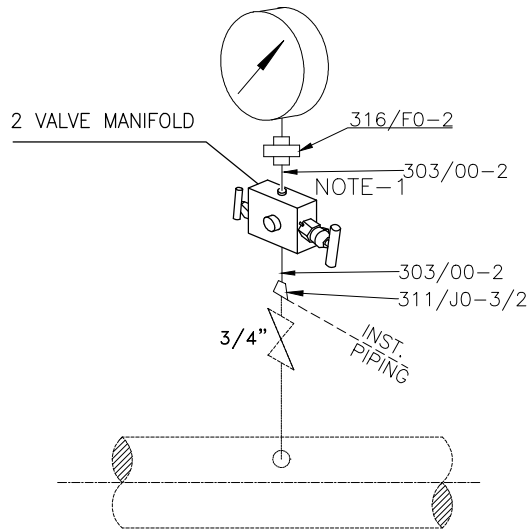
BINA EPC CONTRACTOR CO.



CAD PRODUCED DRAWING –NO MANUAL REVISION ALLOWED

SCALE: A4

# PRESSURE GAUGE



NOTES: 1. 2-VALVE MANIFOLD 1/2" NPT(F) WILL BE SUPPLIED BY INSTRUMENT VENDOR.

NO	TAG NO.
1	PG-0101
2	PG-0202
3	PG-0303
4	PG-0404
5	PG-0505
6	PG-0909
7	PG-1010
8	PG-1329
9	PG-1332
10	PG-1433
11	PG-1436
12	PG-1816
13	PG-1916
14	PG-1820
15	PG-1821
16	PG-1920
17	PG-1921
18	PG-0501
19	PG-0502
20	PG-0903
21	PG-0705

## BILL OF MATERIAL

ITEM CODE.	DESCRIPTION	MATERIAL	SIZE	QTY.
303/00-2	NIPPLE	316LSS	1/2"NPTM-100mm	2
311/J0-3/2	REDUCING COUPLING	316LSS	3/4"NPTF-1/2"NPTF	1
316/FO-2	UNION	316LSS	1/2" NPT(F)	1

STYRENE PARK OFFSITE

CLIENT:

Toase-ehe Park Sanati  
Gohar Ofogh Petrochemical Co.



TITLE:  
INSTRUMENT HOOK-UP DIAGRAM

DRAWING NO:	PRJ. CODE	AREA	PHASE	DISCIPLINE	DOC. TYPE	SEQ. NO.	REV.	SHEET
E1027	000	ED	IN	DIG	007	RO	11 OF 20	

CONSULTANT:

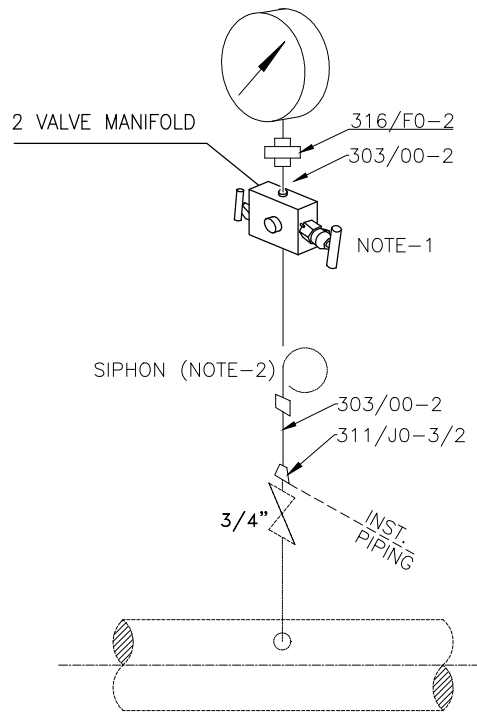
BINA EPC CONTRACTOR CO.



CAD PRODUCED DRAWING -NO MANUAL REVISION ALLOWED

SCALE: A4

# PRESSURE GAUGE WITH SIPHON



- NOTES:**
1. 2-VALVE MANIFOLD 1/2" NPT(F) WILL BE SUPPLIED BY INSTRUMENT VENDOR.
  2. SIPHON (1/2" NPT(M)-1/2" NPT(F) )WILL BE SUPPLIED BY INSTRUMENT VENDOR.

### BILL OF MATERIAL

ITEM CODE.	DESCRIPTION	MATERIAL	SIZE	QTY.
303/00-2	NIPPLE	316LSS	1/2"NPTM-100mm	2
311/J0-3/2	REDUCING COUPLING	316LSS	3/4"NPTF-1/2"NPTF	1
316/FO-2	UNION	316LSS	1/2" NPT(F)	1

NO	TAG NO.
1	PG-0808

STYRENE PARK OFFSITE

CLIENT:

Toase-ehe Park Sanati  
Gohar Ofogh Petrochemical Co.



TITLE:  
INSTRUMENT HOOK-UP DIAGRAM

DRAWING NO:	PRJ. CODE	AREA	PHASE	DISCIPLINE	DOC. TYPE	SEQ. NO.	REV.	SHEET
E1027	000	ED	IN	DIG	007	RO	12 OF 20	

CONSULTANT:

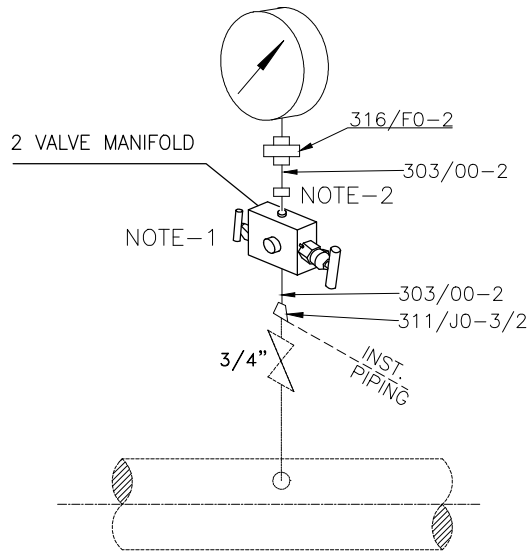
BINA EPC CONTRACTOR CO.



CAD PRODUCED DRAWING -NO MANUAL REVISION ALLOWED

SCALE: A4

# PRESSURE GAUGE WITH OVER PRESSURE PROTECTION



- NOTES:**
1. 2-VALVE MANIFOLD 1/2" NPT(F) WILL BE SUPPLIED BY INSTRUMENT VENDOR.
  2. OVER PRESSURE PROTECTION (1/2" NPT(M)-1/2" NPT(F) )WILL BE SUPPLIED BY INSTRUMENT VENDOR.

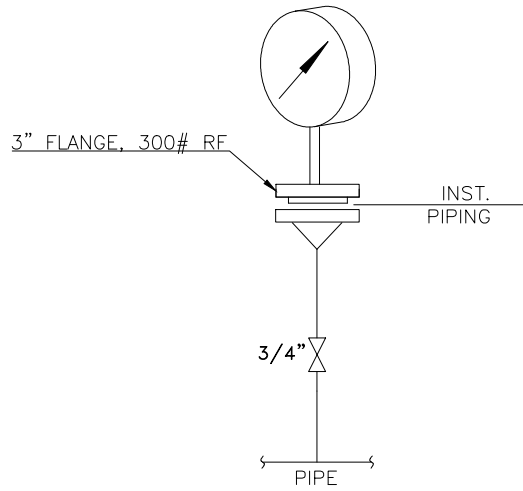
NO	TAG NO.
1	PG-0606
2	PG-0707
3	PG-1212
4	PG-1226
5	PG-1313
6	PG-1414
7	PG-1822
8	PG-1922

BILL OF MATERIAL				
ITEM CODE.	DESCRIPTION	MATERIAL	SIZE	QTY.
303/00-2	NIPPLE	316LSS	1/2"NPTM-100mm	2
311/J0-3/2	REDUCING COUPLING	316LSS	3/4"NPTF-1/2"NPTF	1
316/FO-2	UNION	316LSS	1/2" NPT(F)	1

<b>STYRENE PARK OFFSITE</b>		CLIENT:	
TITLE: <b>INSTRUMENT HOOK-UP DIAGRAM</b>		Toase-ehe Park Sanati Gohar Ofogh Petrochemical Co.	
DRAWING NO: E1027		CONSULTANT:	
CAD PRODUCED DRAWING -NO MANUAL REVISION ALLOWED		BINA EPC CONTRACTOR CO.	





# PRESSURE GAUGE WITH DIAPHRAGM SEAL



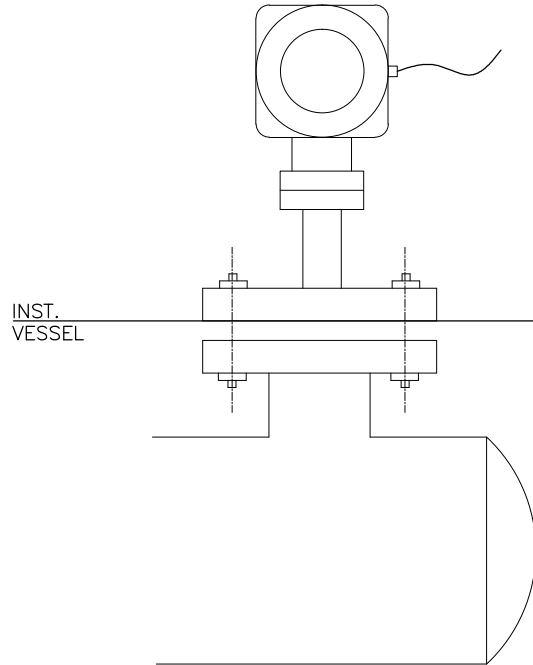
**NOTES:** 1. DIAPHRAGM SEAL WILL BE SUPPLIED BY INSTRUMENT VENDOR.

NO	TAG NO.
1	PG-1817
2	PG-1818
3	PG-1917
4	PG-1918
5	PG-1823
6	PG-1824
7	PG-1825
8	PG-1851
9	PG-1852
10	PG-1853
11	PG-1854
12	PG-1855
13	PG-1856

BILL OF MATERIAL				
ITEM CODE.	DESCRIPTION	MATERIAL	SIZE	QTY.

<b>STYRENE PARK OFFSITE</b>		CLIENT: <b>Toase-ehe Park Sanati Gohar Ofogh Petrochemical Co.</b> 						
TITLE: <b>INSTRUMENT HOOK-UP DIAGRAM</b>		CONSULTANT: <b>BINA EPC CONTRACTOR CO.</b> 						
DRAWING NO:	PRJ. CODE: E1027	AREA: 000	PHASE: ED	DISCIPLINE: IN	DOC. TYPE: DIG	SEQ. NO.: 007	REV.: RO	SHEET: 14 OF 20
CAD PRODUCED DRAWING -NO MANUAL REVISION ALLOWED						SCALE: A4		

**LEVEL TRANSMITTER - RADAR TYPE**



**NOTES:** 1. BOLTS, NUTS AND GASKET WILL BE SUPPLIED BY PIPING.

**BILL OF MATERIAL**

ITEM CODE.	DESCRIPTION	MATERIAL	SIZE	QTY.

NO	TAG NO.	RATING
1	LST-1801	600# RF
2	LT-1802	600# RF
3	LST-1901	600# RF
4	LT-1902	600# RF

STYRENE PARK OFFSITE

CLIENT:

Toase-ehe Park Sanati  
Gohar Ofogh Petrochemical Co.



TITLE:  
INSTRUMENT HOOK-UP DIAGRAM

PRJ. CODE	AREA	PHASE	DISCIPLINE	DOC. TYPE	SEQ. NO.	REV.	SHEET
E1027	000	ED	IN	DIG	007	RO	15 OF 20

CONSULTANT:

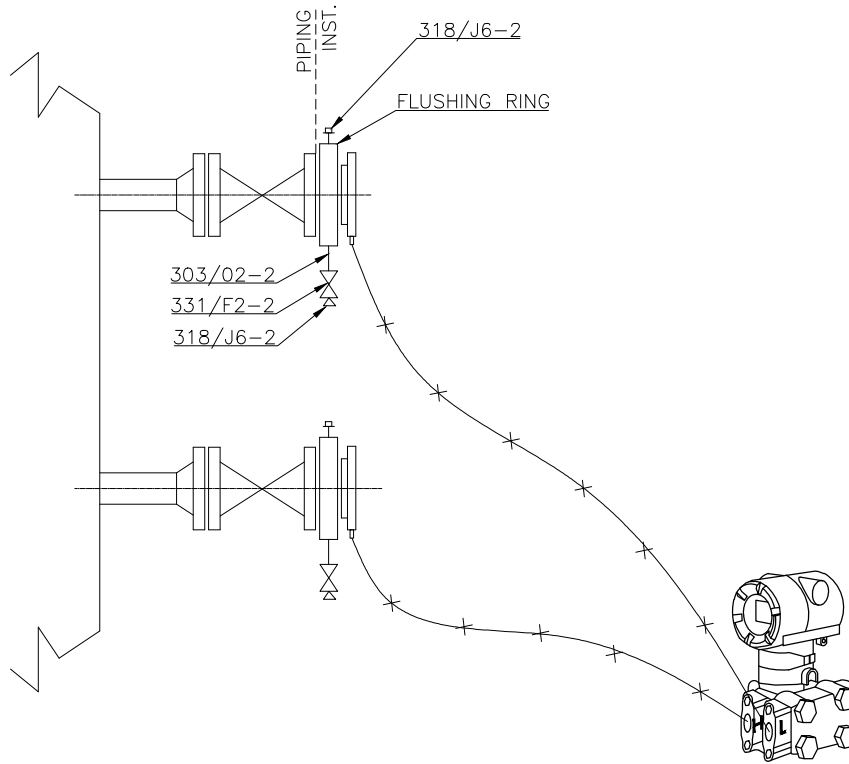
**BINA EPC CONTRACTOR CO.**



CAD PRODUCED DRAWING -NO MANUAL REVISION ALLOWED

SCALE: A4

# D/P LEVEL TRANSMITTER-DIAPHRAGM SEAL TYPE



- NOTES:**
1. 3" REMOTE SEAL DIAPHRAGM WITH EQUAL LENGTH ARMoured STAINLESS STEEL CAPILLARIES SHALL BE USED.
  2. BOLTS, NUTS AND GASKET SHALL BE SUPPLIED BY PIPING.
  3. FLUSHING RING WITH 2 x 1/2" NPTF CONNECTIONS SHALL BE PROVIDED BY VENDOR.

## BILL OF MATERIAL

ITEM CODE.	DESCRIPTION	MATERIAL	SIZE	QTY.
303/O2-2	NIPPLE	C-PVC	1/2"NPTM-100mm	2
318/J6-2	HEX. HEAD PLUG	C-PVC	1/2" NPT(M)	4
331/F2-2	GLOBE VALVE	C-PVC	1/2" NPT(F)	2

NO	TAG NO.
1	LT-1803
2	LT-1903

STYRENE PARK OFFSITE

CLIENT:

Toase-ehe Park Sanati  
Gohar Ofogh Petrochemical Co.



TITLE:  
INSTRUMENT HOOK-UP DIAGRAM

PRJ. CODE	AREA	PHASE	DISCIPLINE	DOC. TYPE	SEQ. NO.	REV.	SHEET
E1027	000	ED	IN	DIG	007	RO	16 OF 20

CONSULTANT:

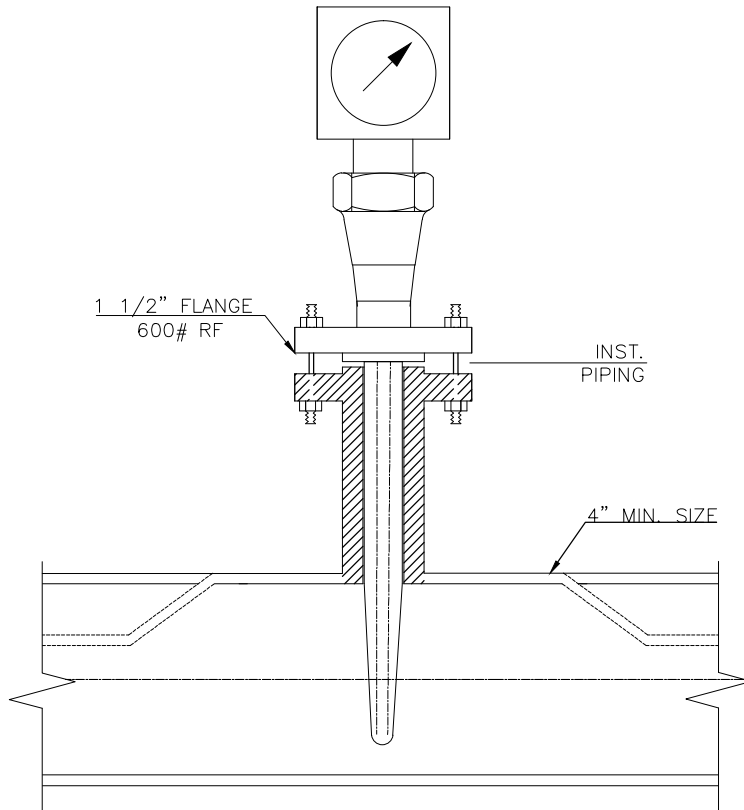
BINA EPC CONTRACTOR CO.



CAD PRODUCED DRAWING -NO MANUAL REVISION ALLOWED

SCALE: A4

# TEMPERATURE GAUGE - BIMETAL



**NOTES:** 1. BOLTS, NUTS AND GASKET WILL BE SUPPLIED BY PIPING.

TAG NO.	TAG NO.
TG-0101	TG-1817
TG-0202	TG-1819
TG-0303	TG-1916
TG-0404	TG-1915
TG-0534	TG-1917
TG-0605	TG-1919
TG-0706	TG-1824
TG-0807	TG-1924
TG-0908	TG-1826
TG-1009	TG-1827
TG-1211	TG-1828
TG-1235	TG-1829
TG-1312	TG-1825
TG-1338	TG-1852
TG-1341	TG-1851
TG-1413	TG-1853
TG-1442	TG-0501
TG-1445	TG-0502
TG-1815	TG-0903
TG-1816	TG-0734

### BILL OF MATERIAL

ITEM CODE.	DESCRIPTION	MATERIAL	SIZE	QTY.

STYRENE PARK OFFSITE

CLIENT:

Toase-ehe Park Sanati  
Gohar Ofogh Petrochemical Co.



TITLE:  
INSTRUMENT HOOK-UP DIAGRAM

CONSULTANT:

DRAWING NO:	PRJ. CODE	AREA	PHASE	DISCIPLINE	DOC. TYPE	SEQ. NO.	REV.	SHEET
E1027	000	ED	IN	DIG	007	RO	17 OF 20	

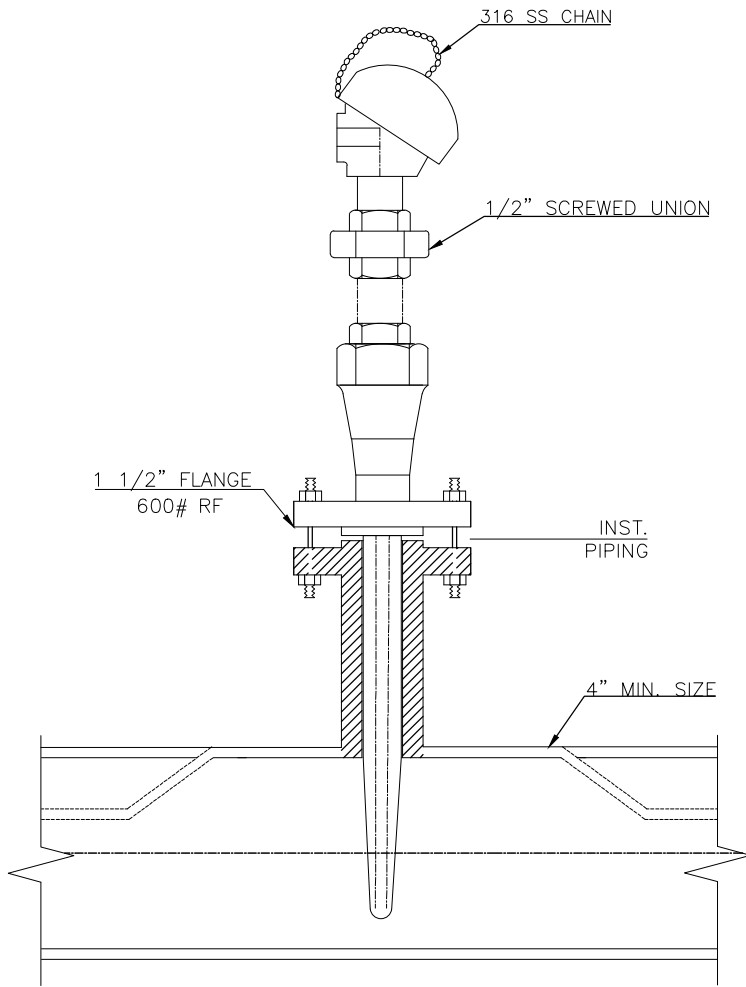
BINA EPC CONTRACTOR CO.



CAD PRODUCED DRAWING -NO MANUAL REVISION ALLOWED

SCALE: A4

# RTD / TEMPERATURE TRANSMITTER



**NOTES:** 1. BOLTS, NUTS AND GASKET WILL BE SUPPLIED BY PIPING.

TAG NO.	TAG NO.
TT-0101	TT-1455
TT-0102	TST-1833
TT-0206	TST-1836
TT-0207	TT-1837
TT-0311	TT-1838
TT-0312	TST-1936
TT-0416	TT-1937
TT-0522	TT-1938
TT-0523	TST-1841
TT-0623	TST-1842
TT-0724	TST-1941
TT-0837	TST-1942
TT-0838	TT-1843
TT-0930	TT-1844
TT-1031	TT-1851
TT-1245	TT-1852
TT-1348	TT-1853
TT-1352	TT-1854
TT-1452	TT-0501
TT-0526	TT-0506
TT-0524	TT-0911
TT-0525	TT-0722
TT-0527	

### BILL OF MATERIAL

ITEM CODE.	DESCRIPTION	MATERIAL	SIZE	QTY.

STYRENE PARK OFFSITE

CLIENT:

Toase-ehe Park Sanati  
Gohar Ofogh Petrochemical Co.



TITLE:  
INSTRUMENT HOOK-UP DIAGRAM

PRJ. CODE	AREA	PHASE	DISCIPLINE	DOC. TYPE	SEQ. NO.	REV.	SHEET
E1027	000	ED	IN	DIG	007	RO	18 OF 20

CONSULTANT:

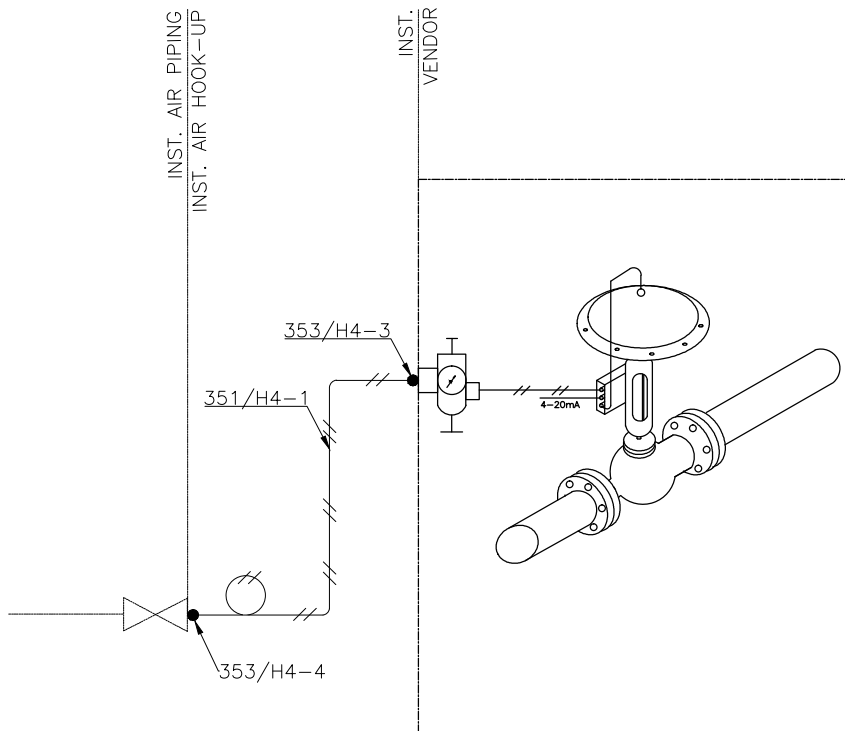
BINA EPC CONTRACTOR CO.



CAD PRODUCED DRAWING -NO MANUAL REVISION ALLOWED

SCALE: A4

# CONTROL VALVE WITH E/P POSITIONER



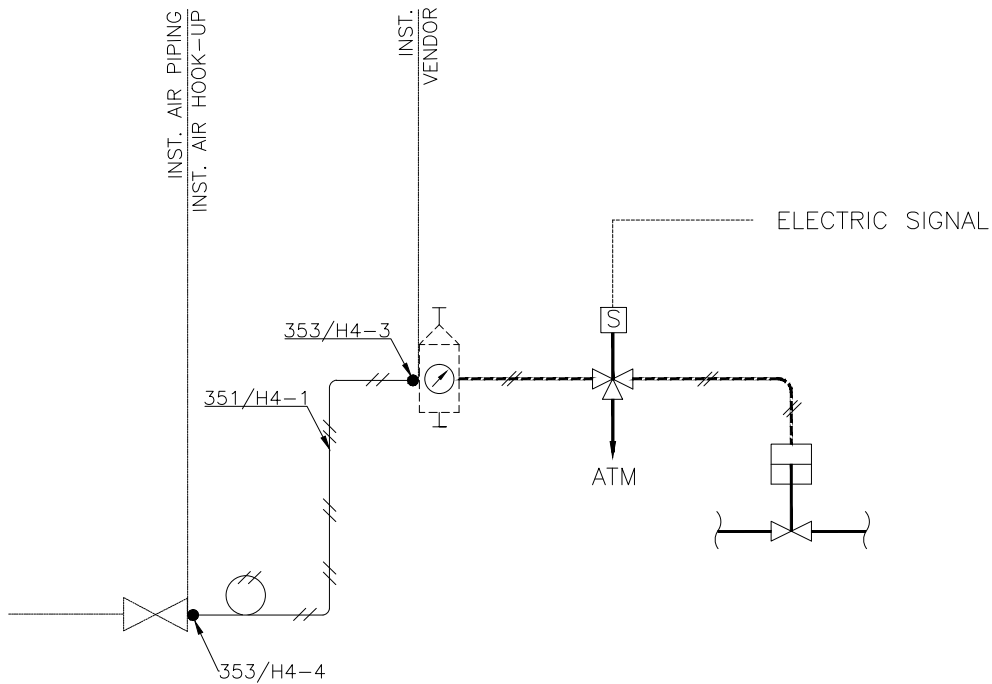
- NOTES:**
1. DISTANCE BETWEEN AIR SUPPLY SHUT-OFF VALVE AND AIR CONSUMER SHOULD BE KEPT TO MINIMUM LENGTH.
  2. VALVE PNEUMATIC CONNECTION SIZE TO BE FINALIZED IN ACCORDANCE WITH VENDOR DATA.

NO	TAG NO.
1	LV-1803
2	LV-1903
3	FV-1872
4	FV-1873
5	FV-1874
6	FV-1875
7	FV-1876
8	FV-1877
9	FV-1878
10	FV-1879

BILL OF MATERIAL				
ITEM CODE.	DESCRIPTION	MATERIAL	SIZE	QTY.
353/H4-3	MALE CONNECTOR	316LSS	1/4"NPTM-1/4"OD	1
353/H4-4	MALE CONNECTOR	316LSS	1/2"NPTM-1/4"OD	1
351/H4-1	SEAMLESS TUBE	316LSS	1/4" OD	5m

<b>STYRENE PARK OFFSITE</b>		CLIENT:	Toase-ehe Park Sanati Gohar Ofogh Petrochemical Co.						
TITLE:		INSTRUMENT HOOK-UP DIAGRAM							
DRAWING NO:	PRJ. CODE	AREA	PHASE	DISCIPLINE	DOC. TYPE	SEQ. NO.	REV.	SHEET	CONSULTANT:
E1027	000	ED	IN	DIG	007	RO	19 OF 20		BINA EPC CONTRACTOR CO.
CAD PRODUCED DRAWING -NO MANUAL REVISION ALLOWED						SCALE: A4			

# ON/OFF VALVE WITHOUT AIR RESERVOIR



- NOTES:**
1. DISTANCE BETWEEN AIR SUPPLY SHUT-OFF VALVE AND AIR CONSUMER SHOULD BE KEPT TO MINIMUM LENGTH.
  2. VALVE PNEUMATIC CONNECTION SIZE TO BE FINALIZED IN ACCORDANCE WITH VENDOR DATA.

NO	TAG NO.
1	ESV-1801
2	ESV-1802
3	ESV-1803
4	ESV-1805
5	ESV-1806
6	ESV-1902
7	ESV-1903
8	ESV-1905
9	ESV-1906
10	XV-1801
11	XV-1802
12	XV-1803
13	XV-1804

BILL OF MATERIAL				
ITEM CODE.	DESCRIPTION	MATERIAL	SIZE	QTY.
353/H4-3	MALE CONNECTOR	316LSS	1/4"NPTM-1/4"OD	1
353/H4-4	MALE CONNECTOR	316LSS	1/2"NPTM-1/4"OD	1
351/H4-1	SEAMLESS TUBE	316LSS	1/4" OD	5m

<b>STYRENE PARK OFFSITE</b>		CLIENT: <b>Toase-ehe Park Sanati</b> <b>Gohar Ofogh Petrochemical Co.</b>								
TITLE: <b>INSTRUMENT HOOK-UP DIAGRAM</b>		CONSULTANT: <b>BINA EPC CONTRACTOR CO.</b>								
DRAWING NO:	PRJ. CODE	AREA	PHASE	DISCIPLINE	DOC. TYPE	SEQ. NO.	REV.	SHEET	SCALE: A4	
E1027	000	ED	IN	DIG	007	RO	20 OF 20	CAD PRODUCED DRAWING -NO MANUAL REVISION ALLOWED		