



**BINA** EPC Contractor Co.  
(Executor of Oil, Gas, Petrochemical & Power Industries)

Toase-ehe Park Sanati Gohar Ofogh Petrochemical Co.

**CONCEPTUAL, BASIC and DETAIL DESIGN  
ENGINEERING OF STYRENE PARK OFFSITE**

**ENBR**  
TEKNOLOJI



Document Title: P&ID

Document No. : EI0127-HRC-VD-PR-PID-003-R0

Rev.: R0

Page 1 of 6

**STYRENE PARK OFFSITE**

**Document Title:**

**P&ID**

Rev.	Issued Date	DESCRIPTION	PREPARED	CHECKED	APPROVED
R0	20/02/2024	Issued for Comment	M.Tavakoli	E.Malek	H.Keshmiri



Toase-eh Park Sanati Gohar Ofogh Petrochemical Co.  
**CONCEPTUAL, BASIC and DETAIL DESIGN ENGINEERING OF  
 STYRENE PARK OFFSITE**



Document Title: P&ID

Document No. : EI0127-HRC-VD-PR-PID-003-R0

Rev.: R0

Page 2 of 6

Page	Revisions						
	R0	R1	R2	R3	R4	R5	R6
1	X						
2	X						
3	X						
4	X						
5	X						
6	X						
7							
8							
9							
10							
11							
12							
13							
14							
15							
16							
17							
18							
19							
20							
21							
22							
23							
24							
25							
26							
27							
28							
29							
30							
31							
32							
33							
34							
35							
36							
37							
38							
39							
40							

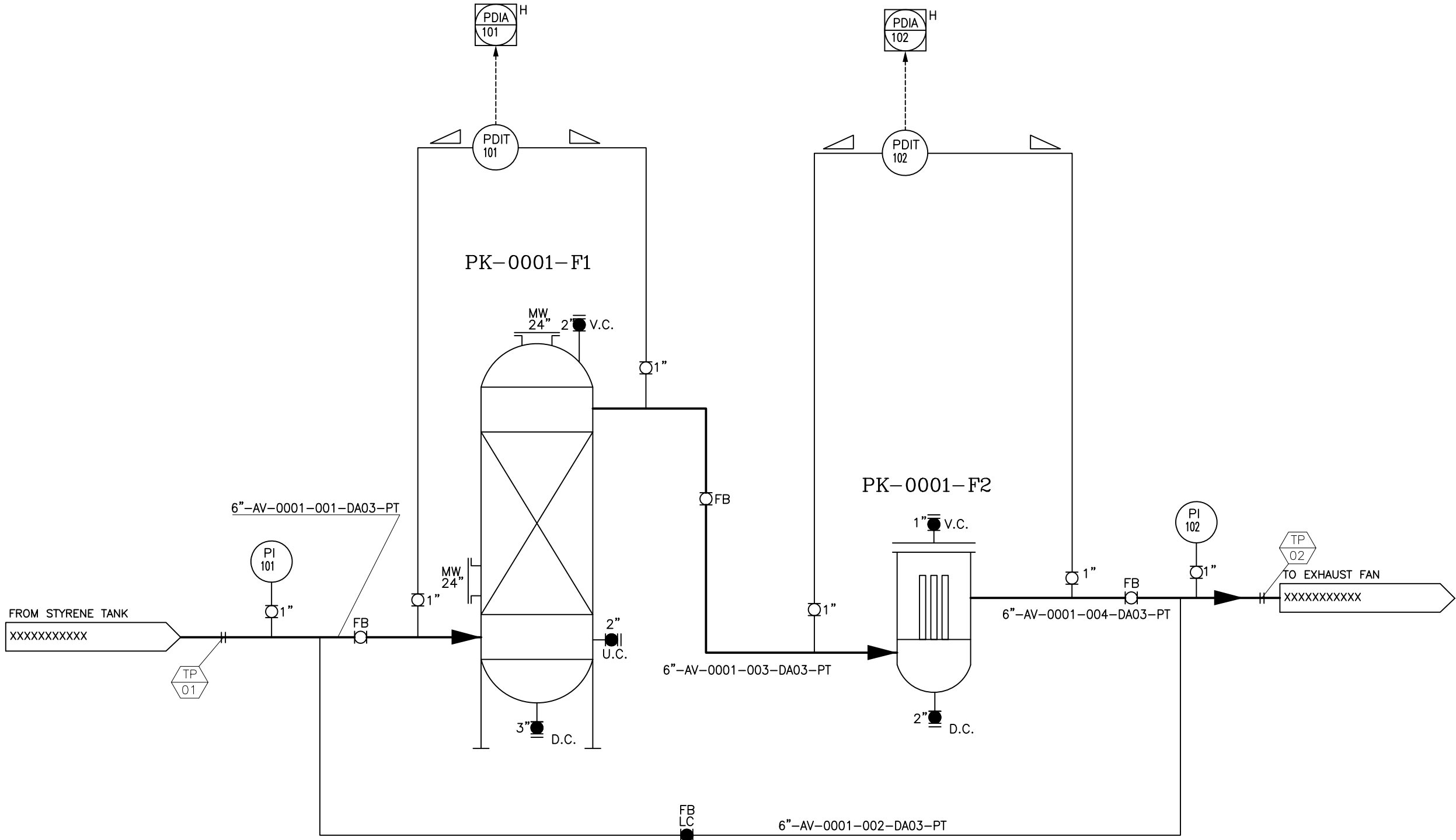
Page	Revisions						
	R0	R1	R2	R3	R4	R5	R6
41							
42							
43							
44							
45							
46							
47							
48							
49							
50							
51							
52							
53							
54							
55							
56							
57							
58							
59							
60							
61							
62							
63							
64							
65							
66							
67							
68							
69							
70							
71							
72							
73							
74							
75							
76							
77							
78							
79							
80							





PK-0001-F1	
AIR CARBON FILTER	
TYPE	: ACTIVATED CARBON
ID x TT	: 2100 x 5300 mm
DP INT/EXT	: 0.2 barg / -0.1 barg
DT	: 85.0 °C
INSULATION	: No
MATERIAL	: CS

PK-0001-F2	
AIR AFTER FILTER	
TYPE	: CARTRIDGE
ID x TT	: 441 x 1500 mm
DP INT/EXT	: 0.2 barg / -0.1 barg
DT	: 85.0 °C
INSULATION	: No
MATERIAL	: CS



REFERENCE DRAWING	DWG NO.	REV.
PFD	E10127-HRC-VD-PR-PFD-002	RO


LEGENDS :


NOTES :

- The package is skid mounted

KEY PLAN :

REV.	ISSUE DATE	DESCRIPTION	PREPARED	CHECKED	APPROVED	COMPANY
RO	20-Feb-24	Issued for Comment	M.T.	E.M.	H.K.	HRCO

CLIENT:  **پتروشیمی توسعه پارک**  
صنعتی گوهر الماس

CONSULTING ENGINEER:  **BINA EPC CONTRACTOR CO.**

VENDOR:  **ENER TEKNOLOJI**  **HAMOON RAH**

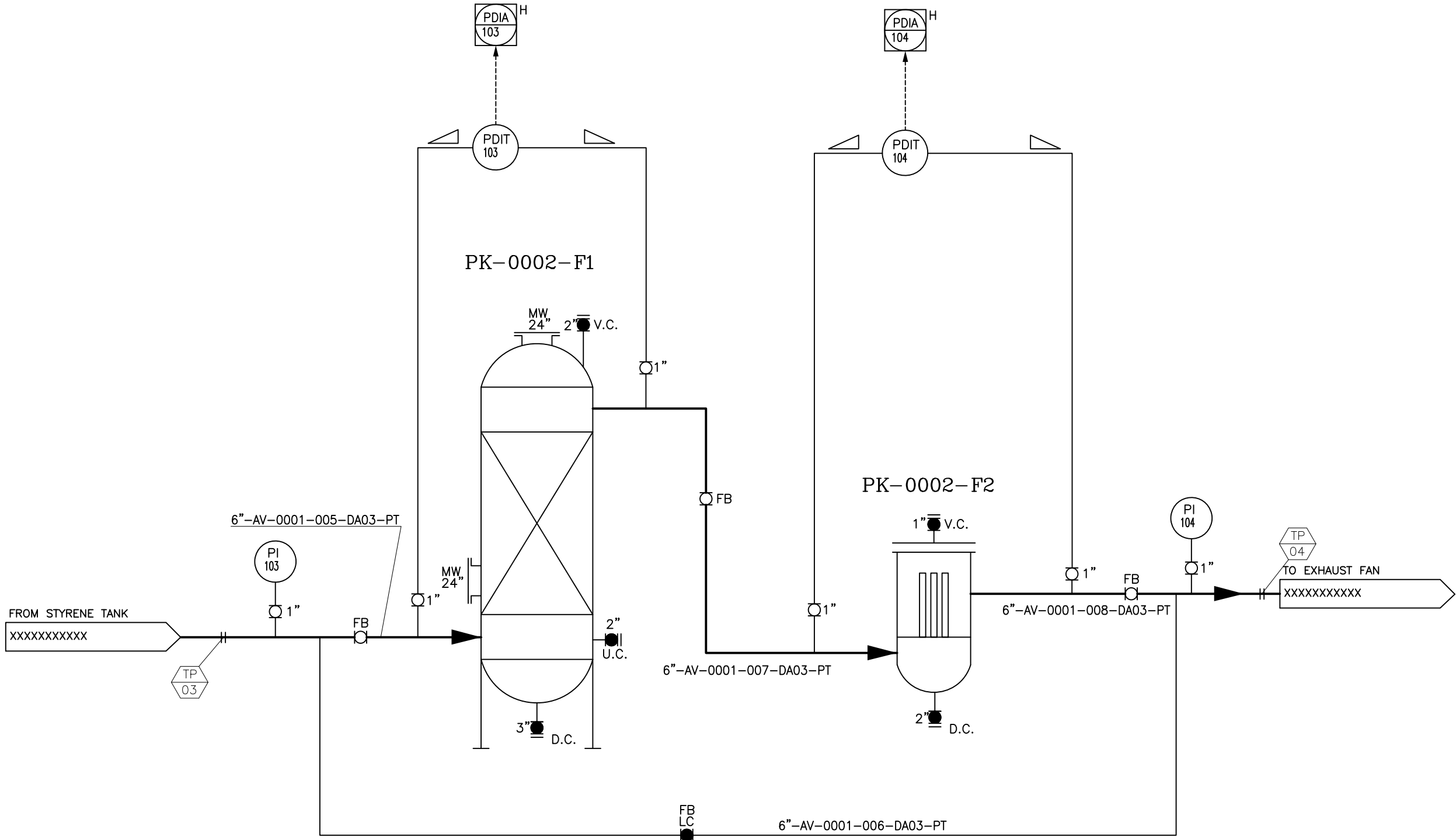
PROJECT: **STYRENE PARK OFFSITE**

DRAWING TITLE: **P&ID**

DRAWING NO.	REV.	SIZE	SCALE	SHEET
E10127-HRC-VD-PR-PID-003	RO	A3	NTS	5 of 6

PK-0002-F1 AIR CARBON FILTER	
TYPE	: ACTIVATED CARBON
ID x TT	: 2100 x 5300 mm
DP INT/EXT	: 0.2 barg / -0.1 barg
DT	: 85.0 °C
INSULATION	: No
MATERIAL	: CS

PK-0002-F2 AIR AFTER FILTER	
TYPE	: CARTRIDGE
ID x TT	: 441 x 1500 mm
DP INT/EXT	: 0.2 barg / -0.1 barg
DT	: 85.0 °C
INSULATION	: No
MATERIAL	: CS



REFERENCE DRAWING	DWG NO.	REV.
PFD	EI0127-HRC-VD-PR-PFD-002	RO

LEGENDS :

NOTES :

- The package is skid mounted

KEY PLAN :

REV.	ISSUE DATE	DESCRIPTION	PREPARED	CHECKED	APPROVED	COMPANY
RO	20-Feb-24	Issued for Comment	M.T.	E.M.	H.K.	HRCO

CLIENT:  **پتروشیمی توسعه پارک**  
صنعتی گوهر الماس

CONSULTING ENGINEER:  **BINA EPC CONTRACTOR CO.**

VENDOR:  **ENER TEKNOLOJI**  **HAMOON RAH**

PROJECT: **STYRENE PARK OFFSITE**

DRAWING TITLE: **P&ID**

DRAWING NO.	REV.	SIZE	SCALE	SHEET
EI0127-HRC-VD-PR-PID-003	RO	A3	NTS	6 of 6