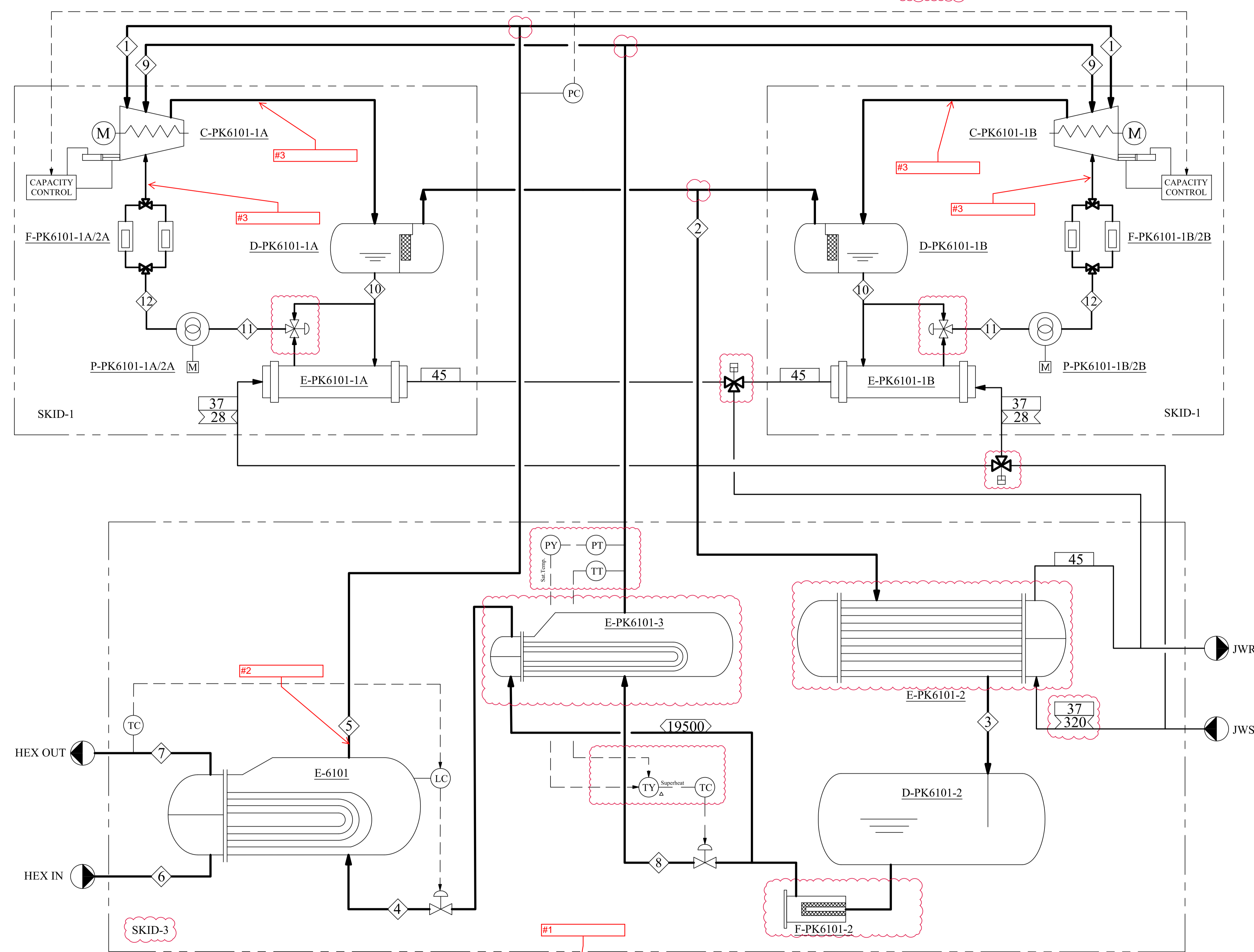


C-PK6101-1A/B Screw Compressor  
 D-PK6101-1A/B Oil Separator  
 D-PK6101-2 Received Drum  
 E-6101 Hexane Cooler  
 E-PK6101-2 Propylene Condenser  
 E-PK6101-3 Economizer  
 E-PK6101-1A/B Oil Cooler  
 F-PK6101-1A/2A Oil Filter  
 F-PK6101-1B/2B Oil Filter  
 F-PK6101-2 Propylene Filter/Dryer  
 P-PK6101-1A/2A Oil Pump  
 P-PK6101-1B/2B Oil Pump



REFERENCES DOCUMENT

NOTES

1) One compressor unit is for standby.  
 2) Compressor model : PPN320LUD-ME

SPECIFICATION

Compressor Duty:  
 BHP = 1160.7 kW

Heat Exchanger Duty:  
 E-6101 = 1924.5 kW  
 E-PK6101-1A/B = 258 kW  
 E-PK6101-2 = 2942 kW  
 E-PK6101-3 = 631 kW

LEGEND

TEMP. °C  
 FLOW M<sup>3</sup>/H  
 FLOW KG/H

Comments:  
 please specify following items :  
 #1 capacity of hexane flow in the Datasheet is 748000 Kg/h and this value has over design. please clarify this item.  
 #2 Line No.5 has needed a K.O. Drum if the flow be the saturation phase. Please explain about the internal structure of E.6101 or installation K.O. Drum after that.  
 #3 Please specify numbering for Discharge Filters and Discharge compressors.

CLIENT: PERSIAN GULF  
 MC: PERSIAN GULF  
 CONTRACTOR: PETROPARS LTD., NARGAN

This document is the property of DPIC. Any unauthorized attempt to reproduce it, in any form, is strictly prohibited.

PROJECT TITLE:  
 DEHDASHT PETROCHEMICAL INDUSTRY COMPANY  
 DEHDASHT HIGH DENSITY POLYETHYLENE PROJECT

DRAWING TITLE:  
 PROCESS FLOW DIAGRAM

DOCUMENT No: DPIC-12-001/000-4150-ME-PFD-027  
 SC: A1  
 SIZE: A1

Proj. Code	Area No.	VD	Material Code	PO No.	Disc. Code	Doc. Type	Serial No.	Rev.	Sheet No.
DPIC9812	001	VD	4150	299-1002	ME	PFD	027	DO	1 OF 1

DO	DATE	DESCRIPTION	PREP'D	CHK'D	APP'D
19-09-2021		ISSUE FOR APPROVAL	R.GOURDARZI	M.NAZARSHOARI	D.R.A.NEJATI

Color	Width
RED	0.10
YEL	0.20
GRN	0.30
CYA	0.40
BLU	0.50
MAG	0.60
WHY	0.20
8	0.10
9	0.10
11	0.10
30	0.10
40	0.10
54	0.10
60	0.10
100	0.10
112	0.10
140	0.10
230	0.10

STREAM NO.	UNIT	1	2	3	4	5	6	7	8	9	10	11	12
DESC.		PRY GAS TO COMP.	PRY GAS FROM COMP.	CONDENSATE PROPYLENE	REFRIGERATE PROPYLENE	RECYCLE PROPYLENE	HOT HEXANE	COOLED HEXANE	PROPYLENE TO ECO.	ECO. FLOW TO COMP.	SEPARATED OIL	COOLED OIL	OIL TO FILTER
TEMP.	°C	-25.0	80.3	48.5	-24.4	-25.0	-16.0	-20.0	12.4	11.4	80.3	50.0	50.0
PRESS.	bara	2.46	19.9	19.9	2.61	2.51	6.91	6.8	8.3	8.09	20.0	20.0	21.7
MASS FLOW	kg/h	19500	27623	27623	19500	19500	828500	828500	8123	8123	240 L/m	240 L/m	240 L/m
DENSITY	kg/m <sup>3</sup>	5.34	35.8	461	24.7	5.38	703	707	56.0	17.8	870	880	880
V.F.		1.0	1.0	0.0	0.22	1.0	0.0	0.0	0.29	1.0	0.0	0.0	0.0

