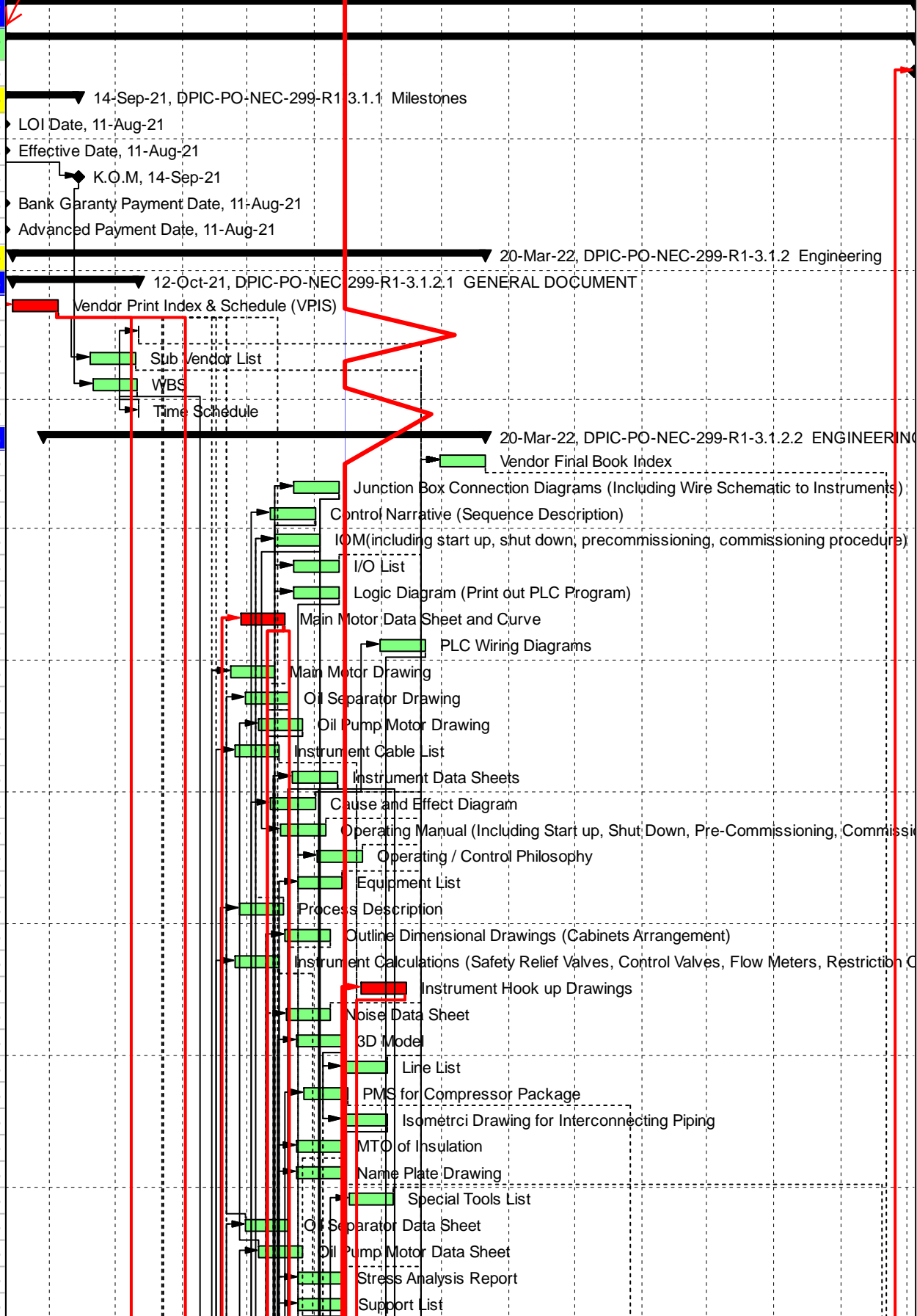


based on mentioned comment for raw material actual Progress, please edit total actual progress

#	Activity ID	Activity Name	Budgeted Labor Cost	Start	Finish	Original Duration	Schedule % Complete	Performance % Complete	Qtr 3, 2021			Qtr 4, 2021				Qtr 1, 2022			Qtr 2, 2022			Qtr 3, 2022		
									Aug	Sep	Oct	Nov	Dec	Jan	Feb	Mar	Apr	May	Jun	Jul	Aug	Sep		
1	DPIC-PO-NEC-299-R1-3	DPIC-PO-NEC-299-1002	100.00	11-Aug-21 A	04-Oct-22	420	11.99%	5.26%																
2	DPIC-PO-NEC-299-R1-3.1	DPIC-PO-NEC-299-1002	100.00	11-Aug-21 A	04-Oct-22	420	11.99%	5.26%																
3	222	Finish	0.00	04-Oct-22		0	0%	0%																
4	DPIC-PO-NEC-299-R1-3.1.1	Milestones	0.00	11-Aug-21	14-Sep-21	34	0%	0%																
5	3	LOI Date	0.00	11-Aug-21		0	100%	0%																
6	4	Effective Date	0.00	11-Aug-21		0	100%	0%																
7	5	K.O.M	0.00	14-Sep-21		0	100%	0%																
8	6	Bank Garanty Payment Date	0.00	11-Aug-21		0	100%	0%																
9	7	Advanced Payment Date	0.00	11-Aug-21		0	100%	0%																
10	DPIC-PO-NEC-299-R1-3.1.2	Engineering	5.00	15-Aug-21 A	20-Mar-22	218	87.2%	43.84%																
11	DPIC-PO-NEC-299-R1-3.1.2.1	GENERAL DOCUMENT	0.50	15-Aug-21 A	12-Oct-21	109	100%	86%																
12	10	Vendor Print Index & Schedule (VPIS)	0.20	15-Aug-21 A	04-Sep-21	21	100%	80%																
13	13	Project Monthly Report for Refrigeration Packages	0.05	02-Nov-21 A	12-Oct-21	30	100%	80%																
14	14	Sub Vendor List	0.10	19-Sep-21 A	10-Oct-21	21	100%	80%																
15	11	WBS	0.10	21-Sep-21	11-Oct-21	21	100%	100%																
16	12	Time Schedule	0.05	12-Oct-21 A	12-Oct-21	40	100%	100%																
17	DPIC-PO-NEC-299-R1-3.1.2.2	ENGINEERING DOCUMENT	3.90	29-Aug-21 A	20-Mar-22	204	89.5%	41.18%																
18	16	Vendor Final Book Index	0.10	28-Feb-22	20-Mar-22	21	0%	0%																
19	22	Junction Box Connection Diagrams (Including Wire Schematic	0.04	22-Dec-21	12-Jan-22	21	100%	0%																
20	23	Control Narrative (Sequence Description)	0.04	11-Dec-21	01-Jan-22	21	100%	0%																
21	26	IOM(including start up, shut down, precommissioning, commis	0.04	13-Dec-21	03-Jan-22	21	100%	0%																
22	27	I/O List	0.04	22-Dec-21	12-Jan-22	21	100%	0%																
23	28	Logic Diagram (Print out PLC Program)	0.04	22-Dec-21	12-Jan-22	21	100%	0%																
24	32	Main Motor Data Sheet and Curve	0.04	28-Nov-21	18-Dec-21	21	100%	0%																
25	33	PLC Wiring Diagrams	0.04	31-Jan-22	21-Feb-22	21	0%	0%																
26	35	Main Motor Drawing	0.05	23-Nov-21	13-Dec-21	21	100%	0%																
27	46	Oil Separator Drawing	0.05	30-Nov-21	20-Dec-21	21	100%	0%																
28	51	Oil Pump Motor Drawing	0.05	06-Dec-21	26-Dec-21	21	100%	0%																
29	52	Instrument Cable List	0.05	25-Nov-21	15-Dec-21	21	100%	0%																
30	53	Instrument Data Sheets	0.04	21-Dec-21	11-Jan-22	21	100%	0%																
31	54	Cause and Effect Diagram	0.04	11-Dec-21	01-Jan-22	21	100%	0%																
32	55	Operating Manual (Including Start up, Shut Down, Pre-Commis	0.04	16-Dec-21	06-Jan-22	21	100%	0%																
33	56	Operating / Control Philosophy	0.04	02-Jan-22	23-Jan-22	21	58.33%	0%																
34	58	Equipment List	0.04	24-Dec-21	13-Jan-22	21	100%	0%																
35	59	Process Description	0.04	27-Nov-21	17-Dec-21	21	100%	0%																
36	60	Outline Dimensional Drawings (Cabinets Arrangement)	0.04	18-Dec-21	08-Jan-22	21	100%	0%																
37	61	Instrument Calculations (Safety Relief Valves, Control Valves, I	0.04	25-Nov-21	15-Dec-21	21	100%	0%																
38	62	Instrument Hook up Drawings	0.04	22-Jan-22	12-Feb-22	21	0%	0%																
39	63	Noise Data Sheet	0.04	19-Dec-21	08-Jan-22	21	100%	0%																
40	66	3D Model	0.04	23-Dec-21	13-Jan-22	21	100%	0%																
41	67	Line List	0.04	13-Jan-22	03-Feb-22	21	5.95%	0%																
42	68	PMS for Compressor Package	0.04	27-Dec-21	16-Jan-22	21	90.48%	0%																
43	69	Isometric Drawing for Interconnecting Piping	0.04	13-Jan-22	03-Feb-22	21	5.95%	0%																
44	70	MTO of Insulation	0.04	23-Dec-21	13-Jan-22	21	100%	0%																
45	72	Name Plate Drawing	0.04	23-Dec-21	13-Jan-22	21	100%	0%																
46	74	Special Tools List	0.04	17-Jan-22	06-Feb-22	21	0%	0%																
47	38	Oil Separator Data Sheet	0.04	30-Nov-21	20-Dec-21	21	100%	0%																
48	43	Oil Pump Motor Data Sheet	0.04	06-Dec-21	26-Dec-21	21	100%	0%																
49	81	Stress Analysis Report	0.04	24-Dec-21	13-Jan-22	21	100%	0%																
50	80	Support List	0.04	24-Dec-21	14-Jan-22	21	100%	0%																



█ Actual Level of Effort
 █ Remaining Work
 █ Critical Remaining Work
 ◆ Milestone
 ─ summary

DPIC-PO-NEC-299-1002			Classic Schedule Layout						16-Jan-22 12:44												
#	Activity ID	Activity Name	Budgeted Labor Cost	Start	Finish	Original Duration	Schedule % Complete	Performance % Complete	Qtr 4, 2021			Qtr 1, 2022			Qtr 2, 2022			Qtr 3, 2022			
									Aug	Sep	Oct	Nov	Dec	Jan	Feb	Mar	Apr	May	Jun	Jul	Aug
51	79	Standard Support	0.04	02-Jan-22	23-Jan-22	21	58.33%	0%													
52	77	ON/OFF Valve Data Sheet	0.04	11-Jan-22	01-Feb-22	21	14.88%	0%													
53	76	Motor Operation & Maintenance Manual	0.04	19-Dec-21	08-Jan-22	21	100%	0%													
54	75	LCS Wiring and Drawing	0.04	12-Jan-22	02-Feb-22	21	10.71%	0%													
55	83	PSV Data Sheet	0.04	28-Dec-21	18-Jan-22	21	81.55%	0%													
56	82	Material Safety Data Sheet	0.04	30-Nov-21	20-Dec-21	21	100%	0%													
57	17	Piping and Instrument Diagram (PID)	0.10	11-Nov-21 A	11-Dec-21	30	100%	60%													
58	20	Utility Consumption List	0.05	27-Nov-21 A	17-Dec-21	21	100%	60%													
59	21	Instrument Index List (Including Alarm & Trip Points)	0.04	11-Dec-21 A	01-Jan-22	21	100%	60%													
60	24	Spare Parts List for Commissioning & Start-up	0.04	13-Dec-21 A	03-Jan-22	21	100%	60%													
61	25	Spare Parts List for 2-Year Operation	0.04	13-Dec-21 A	03-Jan-22	21	100%	60%													
62	29	Compressor Drawing	0.05	29-Aug-21	26-Nov-21	90	100%	60%													
63	31	Oil Filter Drawing	0.05	03-Jan-22 A	23-Jan-22	21	100%	60%													
64	47	Condensor Drawing	0.05	30-Nov-21 A	20-Dec-21	21	100%	60%													
65	48	Liquid Receiver Drawing	0.05	07-Dec-21 A	27-Dec-21	21	100%	60%													
66	49	K/O Drum Drawing	0.05	12-Dec-21 A	01-Jan-22	21	100%	60%													
67	57	Compressor Data Sheet	0.04	27-Nov-21 A	17-Dec-21	21	100%	60%													
68	65	Filter Dryer Drawing	0.04	01-Dec-21 A	21-Dec-21	21	100%	60%													
69	73	Capital Spare Part	0.04	18-Dec-21 A	07-Jan-22	21	100%	60%													
70	36	Oil Cooler Data Sheet	0.04	01-Nov-21	21-Nov-21	21	100%	60%													
71	37	Oil Pump Data Sheet	0.04	30-Nov-21 A	20-Dec-21	21	100%	60%													
72	39	Condenser Data Sheet	0.04	31-Oct-21	20-Nov-21	21	100%	60%													
73	40	Liquid Receiver Data Sheet	0.04	27-Nov-21	17-Dec-21	21	100%	60%													
74	41	K/O Drum Data Sheet	0.04	21-Nov-21	11-Dec-21	21	100%	60%													
75	85	Evaporator Drawing	0.05	27-Nov-21 A	17-Dec-21	21	100%	60%													
76	84	Evaporator Data Sheet	0.04	07-Nov-21	06-Dec-21	30	100%	60%													
77	18	General Arrangement Drawing Including Loads, Displacement,	0.30	23-Nov-21 A	23-Dec-21	30	100%	80%													
78	19	Mechanical Calculation of Heat Exchangers and Pressure Ves	0.30	19-Dec-21 A	17-Jan-22	21	100%	80%													
79	34	Process Flow Diagram (PFD)	0.10	17-Oct-21	15-Dec-21	60	100%	80%													
80	44	Oil Cooler Drawing	0.05	01-Dec-21 A	14-Jan-22	21	100%	80%													
81	45	Oil Pump Drawing	0.05	30-Nov-21 A	20-Dec-21	21	100%	80%													
82	50	Economizer Drawing	0.05	30-Nov-21 A	21-Dec-21	21	100%	80%													
83	71	Thermal Calculation for Heat Exchangers	0.30	31-Oct-21 A	19-Dec-21	50	100%	80%													
84	42	Economizer Data Sheet	0.04	31-Oct-21 A	20-Nov-21	21	100%	80%													
85	30	Oil Filter Data Sheet	0.04	06-Dec-21 A	26-Dec-21	21	100%	80%													
86	64	Filter Dryer Data Sheet	0.04	01-Dec-21 A	21-Dec-21	21	100%	80%													
87	78	Coupling Drawing	0.04	19-Dec-21 A	08-Jan-22	21	100%	80%													
88	DPIC-PO-NEC-299-R1-3.1.2.3 QC DOCUMENT			0.60	18-Nov-21 A	27-Feb-22	102	61.59%	26%	27-Feb-22, DPIC-PO-NEC-299-R1-3.1.2.3 QC DOCUMENT											
89	88	Welding Book (WPS, PQR and Welding / NDE Map)	0.04	07-Feb-22	27-Feb-22	21	0%	0%													
90	89	Painting Procedure	0.04	29-Dec-21	18-Jan-22	21	80.95%	0%													
91	90	Packing, Marking and Shipping Procedure	0.04	29-Dec-21	18-Jan-22	21	80.95%	0%													
92	91	Fat Procedure for Control System	0.04	29-Dec-21	18-Jan-22	21	80.95%	0%													
93	93	PMI Procedure	0.04	29-Dec-21	18-Jan-22	21	80.95%	0%													
94	97	Inspection and Test Procedure for Vessle Skids	0.04	29-Dec-21	18-Jan-22	21	80.95%	0%													
95	98	Preservation Procedure	0.04	19-Jan-22	08-Feb-22	21	0%	0%													
96	99	Hydrostatic Test Procedure	0.04	28-Jan-22	17-Feb-22	21	0%	0%													
97	100	Lifting Procedure	0.04	29-Dec-21	18-Jan-22	21	80.95%	0%													
98	101	Certificates (Including Welder Qualification Certificate / NDT P	0.04	07-Feb-22	27-Feb-22	21	0%	0%													
99	94	Inspection Notification	0.00	07-Feb-22	27-Feb-22	21	0%	0%													
100	95	Inspection and Test Plan for Compressor	0.02	29-Dec-21 A	29-Dec-21	21	80.95%	60%													
101	87	Inspection & Test Plan (ITP) (for Whole Package)	0.10	18-Nov-21 A	08-Dec-21	21	100%	80%													

█ Actual Level of Effort
█ Remaining Work
█ Critical Remaining Work
█ Actual Work
█ Critical Remaining Work
◆ Milestone
▶ summary

TASK filter: All Activities

DPIC-PO-NEC-299-1002			Classic Schedule Layout					16-Jan-22 12:44															
#	Activity ID	Activity Name	Budgeted Labor Cost	Start	Finish	Original Duration	Schedule % Complete	Performance % Complete	Qtr 4, 2021			Qtr 1, 2022			Qtr 2, 2022			Qtr 3, 2022					
									Aug	Sep	Oct	Nov	Dec	Jan	Feb	Mar	Apr	May	Jun	Jul	Aug	Sep	
154	111	EX Work (Instrument)	0.68	08-Feb-22	09-Apr-22	60	0%	0%															
155	112	Custom clearance (Instrument)	0.51	09-Apr-22	09-May-22	30	0%	0%															
156	113	Delivery to shop (Instrument)	0.34	09-May-22	14-May-22	5	0%	0%															
157	DPIC-PO-NEC-299-R1-3.1.3.1.3 Electrical (Electro motor)		5.00	29-Dec-21 A	11-Sep-22	256	11.13%	16%															
158	117	Custom clearance (Electrical (Electro motor))	1.50	12-Aug-22	06-Sep-22	25	0%	0%															
159	118	Delivery to shop (Electrical (Electro motor))	1.00	06-Sep-22	11-Sep-22	5	0%	0%															
160	116	EX Work (Electrical (Electro motor))	2.00	08-Jan-22 A	12-Aug-22	216	2.89%	15%															
161	115	PO placement (Electrical (Electro motor))	0.50	29-Dec-21 A	08-Jan-22	10	100%	100%															
162	DPIC-PO-NEC-299-R1-3.1.3.1.4 Filter		1.70	22-Dec-21 A	06-Apr-22	105	18.77%	0%															
163	120	PO placement (Filter)	0.17	22-Dec-21 A	01-Jan-22	10	100%	0%															
164	121	EX Work (Filter)	0.68	01-Jan-22	02-Mar-22	60	22.08%	0%															
165	122	Custom clearance (Filter)	0.51	02-Mar-22	01-Apr-22	30	0%	0%															
166	123	Delivery to shop (Filter)	0.34	01-Apr-22	06-Apr-22	5	0%	0%															
167	DPIC-PO-NEC-299-R1-3.1.3.1.5 Oil pump & Oil separator		1.70	16-Dec-21 A	04-Jun-22	170	18.32%	16%															
168	127	Custom clearance (Oil pump & Oil separator)	0.51	05-May-22	30-May-22	25	0%	0%															
169	128	Delivery to shop (Oil pump & Oil separator)	0.34	30-May-22	04-Jun-22	5	0%	0%															
170	126	EX Work (Oil pump & Oil separator)	0.68	16-Dec-21 A	05-May-22	140	20.8%	15%															
171	125	PO placement (Oil pump & Oil separator)	0.17	19-Dec-21 A	28-Dec-21 A	10	100%	100%															
172	DPIC-PO-NEC-299-R1-3.1.3.1.6 Compressor		12.50	14-Nov-21 A	10-Jul-22	238	18.44%	16%															
173	132	Custom clearance (Compressor)	3.75	06-Jun-22	05-Jul-22	30	0%	0%															
174	133	Delivery to shop (Compressor)	2.50	06-Jul-22	10-Jul-22	5	0%	0%															
175	131	EX Work (Compressor)	5.00	08-Dec-21 A	05-Jun-22	180	21.11%	15%															
176	130	PO placement (Compressor)	1.25	14-Nov-21 A	24-Nov-21 A	10	100%	100%															
177	DPIC-PO-NEC-299-R1-3.1.3.1.7 Other material		0.70	13-Dec-21	27-May-22	165	17.42%	0%															
178	135	PO placement (other material)	0.07	13-Dec-21	23-Dec-21	10	100%	0%															
179	136	EX Work (Other material)	0.28	23-Dec-21	22-Apr-22	120	18.54%	0%															
180	137	Custom clearance (Other material)	0.21	22-Apr-22	22-May-22	30	0%	0%															
181	138	Delivery to shop (Other material)	0.14	22-May-22	27-May-22	5	0%	0%															
182	DPIC-PO-NEC-299-R1-3.1.4 Fabrication		45.00	07-Jan-22	28-Sep-22	264	2.67%	0%															
183	214	Visual & DIM. Inspection	4.00	15-Sep-22	18-Sep-22	3	0%	0%															
184	215	Surface Preparation	2.50	18-Sep-22	21-Sep-22	3	0%	0%															
185	216	Painting	2.50	21-Sep-22	26-Sep-22	5	0%	0%															
186	217	Final Check	3.00	26-Sep-22	28-Sep-22	2	0%	0%															
187	DPIC-PO-NEC-299-R1-3.1.4.1 Fabrication For Compressor unit		6.00	12-Mar-22	24-Aug-22	165	0%	0%															
188	182	Compressor unit Fabrication	1.36	04-Jun-22	24-Jun-22	20	0%	0%															
189	186	Part Assembly	1.35	11-Jul-22	30-Jul-22	20	0%	0%															
190	187	Part Welding	0.82	31-Jul-22	19-Aug-22	20	0%	0%															
191	188	Running test	0.82	20-Aug-22	24-Aug-22	5	0%	0%															
192	184	Oil cooler	0.99	12-Mar-22	10-Jul-22	120	0%	0%															
193	183	Oil filter	0.33	12-Mar-22	10-Jul-22	120	0%	0%															
194	185	Filter dryer	0.33	12-Mar-22	10-Jul-22	120	0%	0%															
195	DPIC-PO-NEC-299-R1-3.1.4.2 Fabrication For Condensor		6.00	06-Mar-22	22-Jun-22	108	0%	0%															
196	190	Part Fabrication-(cutting,rolling,casting)	3.31	06-Mar-22	05-Apr-22	30	0%	0%															
197	191	Part Assembly	1.05	05-Apr-22	25-May-22	50	0%	0%															
198	192	Part Welding	0.82	25-May-22	19-Jun-22	25	0%	0%															
199	193	NDT Condensor	0.82	19-Jun-22	22-Jun-22	3	0%	0%															
200	DPIC-PO-NEC-299-R1-3.1.4.3 Fabrication For Hexane chiller		6.00	17-Apr-22	30-Aug-22	135	0%	0%															
201	195	Part Fabrication-(cutting,rolling,casting)	3.31	17-Apr-22	27-May-22	40	0%	0%															
202	196	Part Assembly	1.05	27-May-22	31-Jul-22	65	0%	0%															
203	197	Part Welding	0.82	31-Jul-22	25-Aug-22	25	0%	0%															
204	198	NDT Hexane chiller	0.82	25-Aug-22	30-Aug-22	5	0%	0%															
205	DPIC-PO-NEC-299-R1-3.1.4.4 Fabrication For Skid		6.00	07-Jan-22	29-Mar-22	81	20%	0%															

please insert 0% OR 100% for actual progress

15%

15%

15%

Actual Level of Effort Remaining Work Milestone
 Actual Work Critical Remaining Work summary

DPIC-PO-NEC-299-1002			Classic Schedule Layout						16-Jan-22 12:44											
#	Activity ID	Activity Name	Budgeted Labor Cost	Start	Finish	Original Duration	Schedule % Complete	Performance % Complete	Qtr 4, 2021		Qtr 1, 2022			Qtr 2, 2022			Qtr 3, 2022			
									Aug	Sep	Oct	Nov	Dec	Jan	Feb	Mar	Apr	May	Jun	Jul
206	200	Part Fabrication-(cutting,rolling,casting)	3.31	07-Jan-22	27-Jan-22	20	36.25%	0%												
207	201	Part Assembly	1.05	27-Jan-22	16-Feb-22	20	0%	0%												
208	202	Part Welding	0.82	28-Feb-22	19-Mar-22	20	0%	0%												
209	203	NDT Skid	0.82	20-Mar-22	29-Mar-22	10	0%	0%												
210	DPIC-PO-NEC-299-R1-3.1.4.5 Fabrication For Other		3.00	29-May-22	23-Jul-22	55	0%	0%												
211	205	Part Fabrication-(cutting,rolling,casting)	1.75	29-May-22	18-Jun-22	20	0%	0%												
212	206	Part Assembly	0.75	18-Jun-22	03-Jul-22	15	0%	0%												
213	207	Part Welding	0.25	03-Jul-22	18-Jul-22	15	0%	0%												
214	208	Hydro test	0.25	18-Jul-22	23-Jul-22	5	0%	0%												
215	DPIC-PO-NEC-299-R1-3.1.4.6 Assembly of packages on skid		6.00	14-Aug-22	15-Sep-22	32	0%	0%												
216	210	Inter connecting piping	3.31	14-Aug-22	29-Aug-22	15	0%	0%												
217	211	Part Assembly	1.05	29-Aug-22	03-Sep-22	5	0%	0%												
218	212	Part Welding	0.82	03-Sep-22	10-Sep-22	7	0%	0%												
219	213	NDT packages on skid	0.82	10-Sep-22	15-Sep-22	5	0%	0%												
220	DPIC-PO-NEC-299-R1-3.1.5 FINAL INSPECTION TEST and RELE,		10.00	28-Sep-22	30-Sep-22	2	0%	0%												
221	219	FINAL INSPECTION TEST and RELEASE NOTE for Ex-Work	10.00	28-Sep-22	30-Sep-22	2	0%	0%												
222	DPIC-PO-NEC-299-R1-3.1.6 Final Data Book		5.00	30-Sep-22	04-Oct-22	4	0%	0%												
223	221	VENDOR FINAL DATA BOOK	5.00	30-Sep-22	04-Oct-22	4	0%	0%												

