

Rejected

add below column:
 1-baseline start date
 2-baseline finish date
 3-variance finish date

****Actual progress for all activity shall be modified based on Excel file.****

actual progress and actual date for these items shall be updated.

Schedule Layout								19-Feb-22 14:57													
#	Activity ID	Labor Cost	Start	Finish	Original Duration	Schedule % Complete	Performance % Complete	A	S	O	N	D	J	F	M	A	M	J	J	A	S
1	DPIC-PO-NEC-299-R2-4 DPIC-PO-NE	100.00	11-Aug-21 A	04-Oct-22	420	26.64%	10.51%														
2	DPIC-PO-NEC-299-R2-4.1 DPIC-PO-NE	100.00	11-Aug-21 A	04-Oct-22	420	26.64%	10.51%														
	PO-NEC-299-R2-4.1.1 Milestones	0.00	11-Aug-21	14-Sep-21	34	0%	0%														
6	4 LOI Date	0.00	11-Aug-21		0	100%	0%														
7	5 Effective Date	0.00	11-Aug-21		0	100%	0%														
8	6 K.O.M	0.00	14-Sep-21		0	100%	0%														
9	7 Bank Garanty Payment Date	0.00	11-Aug-21		0	100%	0%														
10	7 Advanced Payment Date	0.00	11-Aug-21		0	100%	0%														
10	DPIC-PO-NEC-299-R2-4.1.2 Engineering	5.00	15-Aug-21 A	20-Mar-22	218	96.49%	50.72%														
11	DPIC-PO-NEC-299-R2-4.1.2.1 GENERAL DOCU	0.50	15-Aug-21 A	12-Oct-21	109	100%	86%														
12	10 Vendor Print Index & Schedule (VPIS)	0.20	15-Aug-21 A	04-Sep-21	21	100%	80%														
13	11 WBS	0.10	21-Sep-21	11-Oct-21	21	100%	100%														
14	12 Time Schedule	0.05	12-Oct-21 A	12-Oct-21	40	100%	100%														
15	13 Project Monthly Report for Refrigeratio	0.05	02-Nov-21 A	12-Oct-21	30	100%	80%														
16	14 Sub Vendor List	0.10	19-Sep-21 A	10-Oct-21	21	100%	80%														
17	DPIC-PO-NEC-299-R2-4.1.2.2 ENGINEERING D	3.90	29-Aug-21 A	20-Mar-22	204	97.06%	47.13%														
18	16 Vendor Final Book Index	0.10	28-Feb-22	20-Mar-22	21	0%	0%														
19	17 Piping and Instrument Diagram (PID)	0.10	11-Nov-21 A	11-Dec-21	30	100%	80%														
20	18 General Arrangement Drawing Includir	0.30	23-Nov-21 A	23-Dec-21	30	100%	80%														
21	19 Mechanical Calculation of Heat Exchar	0.30	19-Dec-21 A	17-Jan-22	21	100%	80%														
22	20 Utility Consumption List	0.05	27-Nov-21 A	17-Dec-21	21	100%	80%														
23	21 Instrument Index List (Including Alarm	0.04	11-Dec-21 A	01-Jan-22	21	100%	80%														
24	22 Junction Box Connection Diagrams (In	0.04	22-Dec-21	12-Jan-22	21	100%	0%														
25	23 Control Narrative (Sequence Descripti	0.04	11-Dec-21	01-Jan-22	21	100%	0%														
26	24 Spare Parts List for Commissioning &	0.04	13-Dec-21 A	03-Jan-22	21	100%	60%														
27	25 Spare Parts List for 2-Year Operation	0.04	13-Dec-21 A	03-Jan-22	21	100%	60%														
28	26 IOM(including start up, shut down, pre	0.04	13-Dec-21	03-Jan-22	21	100%	0%														
29	27 I/O List	0.04	22-Dec-21	12-Jan-22	21	100%	0%														
30	28 Logic Diagram (Print out PLC Program)	0.04	22-Dec-21	12-Jan-22	21	100%	0%														
31	29 Compressor Drawing	0.05	29-Aug-21	26-Nov-21	90	100%	60%														
32	30 Oil Filter Data Sheet	0.04	06-Dec-21 A	26-Dec-21	21	100%	80%														
33	31 Oil Filter Drawing	0.05	03-Jan-22 A	23-Jan-22	21	100%	80%														

Actual Level of Effort
 Remaining Work
 Actual Work
 Critical Remaini...

some of finish and start dates is not visible. shall be modified.

****Actual progress for all activity shall be modified based on Excel file.****

DPIC-PO-NEC-299-1002		Please insert 0% for this Doc because this doc has been rejected		Schedule Layout				19-Feb-22 14:57														
#	Activity ID			Finish	Original	Schedule % Complete	Performance % Complete	A	S	O	N	D	J	F	M	A	M	J	J	A	S	
34	32	Main Motor Data Sheet and Curve	0.04	28-Nov-21 A	18-Dec-21	100%	60%															
35	33	PLC Wiring Diagrams	0.04	31-Jan-22	21-Feb-22	63.1%	0%															
36	34	Process Flow Diagram (PFD)	0.10	17-Oct-21	15-Dec-21	100%	80%															
37	35	Main Motor Drawing	0.05	23-Nov-21	13-Dec-21	100%	0%															
38	36	Oil Cooler Data Sheet	0.04	01-Nov-21 A	21-Nov-21	100%	80%															
39	37	Oil Pump Data Sheet	0.04	30-Nov-21 A	20-Dec-21	100%	80%															
40	38	Oil Separator Data Sheet	0.04	30-Nov-21	20-Dec-21	100%	0%															
41	39	Condenser Data Sheet	0.04	31-Oct-21 A	20-Nov-21	100%	80%															
42	40	Liquid Receiver Data Sheet	0.04	27-Nov-21 A	17-Dec-21	100%	80%															
43	41	K/O Drum Data Sheet	0.04	21-Nov-21 A	11-Dec-21	100%	80%															
44	42	Economizer Data Sheet	0.04	31-Oct-21 A	20-Nov-21	100%	80%															
45	43	Oil Pump Motor Data Sheet	0.04	06-Dec-21	26-Dec-21	100%	0%															
46	44	Oil Cooler Drawing	0.05	01-Dec-21 A	14-Jan-22	100%	80%															
47	45	Oil Pump Drawing	0.05	30-Nov-21 A	20-Dec-21	100%	80%															
48	46	Oil Separator Drawing	0.05	30-Nov-21	20-Dec-21	100%	0%															
49	47	Condenser Drawing	0.05	30-Nov-21 A	20-Dec-21	100%	80%															
50	48	Liquid Receiver Drawing	0.05	07-Dec-21 A	27-Dec-21	100%	80%															
51	49	K/O Drum Drawing	0.05	12-Dec-21 A	01-Jan-22	100%	80%															
52	50	Economizer Drawing	0.05	30-Nov-21 A	21-Dec-21	100%	80%															
53	51	Oil Pump Motor Drawing	0.05	06-Dec-21	26-Dec-21	100%	0%															
54	52	Instrument Cable List	0.05	25-Nov-21	15-Dec-21	100%	0%															
55	53	Instrument Data Sheets	0.04	21-Dec-21	11-Jan-22	100%	0%															
56	54	Cause and Effect Diagram	0.04	11-Dec-21	01-Jan-22	100%	0%															
57	55	Operating Manual (Including Start up, ...)	0.04	16-Dec-21	06-Jan-22	100%	0%															
58	56	Operating / Control Philosophy	0.04	02-Jan-22	23-Jan-22	100%	0%															
59	57	Compressor Data Sheet	0.04	27-Nov-21 A	17-Dec-21	100%	80%															
60	58	Equipment List	0.04	24-Dec-21 A	13-Jan-22	100%	60%															
61	59	Process Description	0.04	27-Nov-21	17-Dec-21	100%	0%															
62	60	Outline Dimensional Drawings (Cabine...)	0.04	18-Dec-21	08-Jan-22	100%	0%															
63	61	Instrument Calculations (Safety Relief...)	0.04	25-Nov-21	15-Dec-21	100%	0%															
64	62	Instrument Hook up Drawings	0.04	22-Jan-22	12-Feb-22	100%	0%															
65	63	Noise Data Sheet	0.04	19-Dec-21	08-Jan-22	100%	0%															
66	64	Propylene Filter Dryer Data Sheet	0.04	01-Dec-21 A	21-Dec-21	100%	80%															
67	65	Filter Dryer Drawing	0.04	01-Dec-21 A	21-Dec-21	100%	80%															

█ Actual Level of Effort █ Remaining Work
█ Actual Work █ Critical Remaini...

some of finish and start dates is not visible. shall be modified.

****Actual progress for all activity shall be modified based on Excel file.****

DPIC-PO-NEC-299-1002			Classic Schedule Layout						19-Feb-22 14:57											
#	Activity ID	Activity Name	Budgeted Labor Cost	Start	Finish	Original Duration	Schedule % Complete	Performance % Complete	Gantt Chart (A S O N D J F M A M J J A S)											
68	66	3D Model	0.04	23-Dec-21	13-Jan-22	21	100%	0%	[Gantt bar for 3D Model]											
69	67	Line List	0.04	13-Jan-22 A	03-Feb-22	21	100%	80%	[Gantt bar for Line List]											
70	68	PMS for Compressor Package	0.04	27-Dec-21	16-Jan-22	21	100%	0%	[Gantt bar for PMS for Compressor Package]											
71	69	Isometric Drawing for Interconnecting	0.04	13-Jan-22	03-Feb-22	21	100%	0%	[Gantt bar for Isometric Drawing for Interconnecting]											
72	70	MTO of Insulation	0.04	23-Dec-21	13-Jan-22	21	100%	0%	[Gantt bar for MTO of Insulation]											
73	71	Thermal Calculation for Heat Exchange	0.30	31-Oct-21 A	19-Dec-21	50	100%	80%	[Gantt bar for Thermal Calculation for Heat Exchange]											
74	72	Name Plate Drawing	0.04	23-Dec-21	13-Jan-22	21	100%	0%	[Gantt bar for Name Plate Drawing]											
75	73	Capital Spare Part	0.04	18-Dec-21 A	07-Jan-22	21	100%	60%	[Gantt bar for Capital Spare Part]											
76	74	Special Tools List	0.04	17-Jan-22	06-Feb-22	21	100%	0%	[Gantt bar for Special Tools List]											
77	75	LCS Wiring and Drawing	0.04	12-Jan-22	02-Feb-22	21	100%	0%	[Gantt bar for LCS Wiring and Drawing]											
78	76	Motor Operation & Maintenance Manual	0.04	19-Dec-21	08-Jan-22	21	100%	0%	[Gantt bar for Motor Operation & Maintenance Manual]											
79	77	ON/OFF Valve Data Sheet	0.04	11-Jan-22	01-Feb-22	21	100%	0%	[Gantt bar for ON/OFF Valve Data Sheet]											
80	78	Coupling Drawing	0.04	19-Dec-21 A	08-Jan-22	21	100%	80%	[Gantt bar for Coupling Drawing]											
81	79	Standard Support	0.04	02-Jan-22	23-Jan-22	21	100%	0%	[Gantt bar for Standard Support]											
82	80	Support List	0.04	24-Dec-21	14-Jan-22	21	100%	0%	[Gantt bar for Support List]											
83	81	Stress Analysis Report	0.04	24-Dec-21	13-Jan-22	21	100%	0%	[Gantt bar for Stress Analysis Report]											
84	82	Material Safety Data Sheet	0.04	30-Nov-21	20-Dec-21	21	100%	0%	[Gantt bar for Material Safety Data Sheet]											
85	83	PSV Data Sheet	0.04	28-Dec-21	18-Jan-22	21	100%	0%	[Gantt bar for PSV Data Sheet]											
86	84	Evaporator Data Sheet	0.04	07-Nov-21 A	06-Dec-21	30	100%	80%	[Gantt bar for Evaporator Data Sheet]											
87	85	Evaporator Drawing	0.05	27-Nov-21 A	17-Dec-21	21	100%	80%	[Gantt bar for Evaporator Drawing]											
88	DPIC-PO-NEC-299-R2-4.1.2.3 QC DOCUMENT		0.60	18-Nov-21 A	27-Feb-22	102	89.84%	44.67%	[Gantt bar for QC DOCUMENT]											
89	100	Lifting Procedure	0.04	29-Dec-21	18-Jan-22	21	100%	0%	[Gantt bar for Lifting Procedure]											
90	101	Certificates (Including Welder Qualification)	0.04	07-Feb-22 A	27-Feb-22	21	33.33%	80%	[Gantt bar for Certificates (Including Welder Qualification)]											
91	87	Inspection & Test Plan (ITP) for Wholesaler	0.10	18-Nov-21 A	08-Dec-21	21	100%	80%	[Gantt bar for Inspection & Test Plan (ITP) for Wholesaler]											
92	88	Welding Book (WPS, PQR and Welding Procedure)	0.04	07-Feb-22	27-Feb-22	21	33.33%	0%	[Gantt bar for Welding Book (WPS, PQR and Welding Procedure)]											
93	89	Painting Procedure	0.04	29-Dec-21	18-Jan-22	21	100%	0%	[Gantt bar for Painting Procedure]											
94	90	Packing, Marking and Shipping Procedure	0.04	29-Dec-21 A	18-Jan-22	21	100%	80%	[Gantt bar for Packing, Marking and Shipping Procedure]											
95	91	Fat Procedure for Control System	0.04	29-Dec-21	18-Jan-22	21	100%	0%	[Gantt bar for Fat Procedure for Control System]											
96	92	NDE Procedure	0.04	22-Nov-21 A	29-Dec-21	21	100%	100%	[Gantt bar for NDE Procedure]											
97	93	PMI Procedure	0.04	29-Dec-21 A	18-Jan-22	21	100%	100%	[Gantt bar for PMI Procedure]											
98	94	Inspection Notification	0.00	07-Feb-22	27-Feb-22	21	33.33%	0%	[Gantt bar for Inspection Notification]											
99	95	Inspection and Test Plan for Compressor	0.02	29-Dec-21 A	29-Dec-21	21	100%	60%	[Gantt bar for Inspection and Test Plan for Compressor]											
100	96	Inspection and Test Procedure for Corrosion	0.04	05-Jan-22 A	15-Dec-21	21	100%	80%	[Gantt bar for Inspection and Test Procedure for Corrosion]											
101	97	Inspection and Test Procedure for Vessels	0.04	29-Dec-21	18-Jan-22	21	100%	0%	[Gantt bar for Inspection and Test Procedure for Vessels]											

█ Actual Level of Effort █ Remaining Work
█ Actual Work █ Critical Remaining

some of finish and start dates is not visible. shall be modified.

****Actual progress for all activity shall be modified based on Excel file.****

DPIC-PO-NEC-299-1002			Classic Schedule Layout					19-Feb-22 14:57														
#	Activity ID	Activity Name	Budgeted Labor Cost	Start	Finish	Original Duration	Schedule % Complete	Performance % Complete	A	S	O	N	D	J	F	M	A	M	J	J	A	S
102	98	Preservation Procedure	0.04	19-Jan-22	08-Feb-22	21	100%	0%														
103	99	Hydrostatic Test Procedure	0.04	28-Jan-22	17-Feb-22	21	80.95%	0%														
104	DPIC-PO-NEC-299-R2-4.1.3 Supply of Material		35.00	14-Nov-21 A	11-Sep-22	301	35.72%	5.49%														
105	DPIC-PO-NEC-299-R2-4.1.3.2 Domestic Supply		10.00	13-Dec-21	27-Mar-22	104	66.33%	0%														
106	DPIC-PO-NEC-299-R2-4.1.3.2.1 Pipe		1.00	24-Jan-22	18-Feb-22	25	52.5%	0%														
107	141	PO placement (Pipe)	0.10	24-Jan-22	29-Jan-22	5	100%	0%														
108	142	EX Work (Pipe)	0.40	29-Jan-22	13-Feb-22	15	100%	0%														
109	143	Delivery to shop (Pipe)	0.50	13-Feb-22	18-Feb-22	5	5%	0%														
110	DPIC-PO-NEC-299-R2-4.1.3.2.2 Plate		1.00	13-Dec-21	07-Jan-22	25	100%	0%														
111	145	PO placement (Plate)	0.10	13-Dec-21	18-Dec-21	5	100%	0%														
112	146	EX Work (Plate)	0.40	18-Dec-21	02-Jan-22	15	100%	0%														
113	147	Delivery to shop (Plate)	0.50	02-Jan-22	07-Jan-22	5	100%	0%														
114	DPIC-PO-NEC-299-R2-4.1.3.2.3 Flange & Fitt		1.00	13-Dec-21	01-Feb-22	50	100%	0%														
115	149	PO placement (Flange & Fitting)	0.10	13-Dec-21	18-Dec-21	5	100%	0%														
116	150	EX Work (Flange & Fitting)	0.40	18-Dec-21	27-Jan-22	40	100%	0%														
117	151	Delivery to shop (Flange & Fitting)	0.50	27-Jan-22	01-Feb-22	5	100%	0%														
118	DPIC-PO-NEC-299-R2-4.1.3.2.4 Gasket		1.00	13-Dec-21	22-Jan-22	40	100%	0%														
119	153	PO placement (Gasket)	0.10	13-Dec-21	18-Dec-21	5	100%	0%														
120	154	EX Work (Gasket)	0.40	18-Dec-21	17-Jan-22	30	100%	0%														
121	155	Delivery to shop (Gasket)	0.50	17-Jan-22	22-Jan-22	5	100%	0%														
122	DPIC-PO-NEC-299-R2-4.1.3.2.5 Bolt & Nut		1.00	13-Dec-21	22-Jan-22	40	100%	0%														
123	157	PO placement (Bolt & Nut)	0.10	13-Dec-21	18-Dec-21	5	100%	0%														
124	158	EX Work (Bolt & Nut)	0.40	18-Dec-21	17-Jan-22	30	100%	0%														
125	159	Delivery to shop (Bolt & Nut)	0.50	17-Jan-22	22-Jan-22	5	100%	0%														
126	DPIC-PO-NEC-299-R2-4.1.3.2.6 Electrical		1.00	12-Jan-22	21-Feb-22	40	46.33%	0%														
127	161	PO placement (Electrical)	0.10	12-Jan-22	17-Jan-22	5	100%	0%														
128	162	EX Work (Electrical)	0.40	17-Jan-22	16-Feb-22	30	90.83%	0%														
129	163	Delivery to shop (Electrical)	0.50	16-Feb-22	21-Feb-22	5	0%	0%														
130	DPIC-PO-NEC-299-R2-4.1.3.2.7 Manual valves		1.00	09-Jan-22	17-Feb-22	40	60%	0%														
131	165	PO placement (Manual valves)	0.10	09-Jan-22	13-Jan-22	5	100%	0%														
132	166	EX Work (Manual valves)	0.40	14-Jan-22	12-Feb-22	30	100%	0%														
133	167	Delivery to shop (Manual valves)	0.50	13-Feb-22	17-Feb-22	5	20%	0%														
134	DPIC-PO-NEC-299-R2-4.1.3.2.8 Instrument		1.00	15-Feb-22	27-Mar-22	40	0%	0%														
135	169	PO placement (Domestic Instrument)	0.10	15-Feb-22	20-Feb-22	5	0%	0%														
136	170	EX Work (Domestic Instrument)	0.40	20-Feb-22	22-Mar-22	30	0%	0%														

█ Actual Level of Effort █ Remaining Work
█ Actual Work █ Critical Remaini...

some of finish and start dates is not visible. shall be modified.

****Actual progress for all activity shall be modified based on Excel file.****

DPIC-PO-NEC-299-1002				Classic Schedule Layout					19-Feb-22 14:57													
#	Activity ID	Activity Name	Budgeted Labor Cost	Start	Finish	Original Duration	Schedule % Complete	Performance % Complete	Gantt Chart (A S O N D J F M A M J J A S)													
137	171	Delivery to shop (Domestic Instrument)	0.50	22-Mar-22	27-Mar-22	5	0%	0%	Gantt bar for 171: Delivery to shop (Domestic Instrument)													
138	DPIC-PO-NEC-299-R2-4.1.3.2.9 PLC		1.00	11-Feb-22	23-Mar-22	40	4.5%	0%	Gantt bar for 138: DPIC-PO-NEC-299-R2-4.1.3.2.9 PLC													
139	173	PO placement (PLC)	0.10	11-Feb-22	16-Feb-22	5	45%	0%	Gantt bar for 139: PO placement (PLC)													
140	174	EX Work (PLC)	0.40	16-Feb-22	18-Mar-22	30	0%	0%	Gantt bar for 140: EX Work (PLC)													
141	175	Delivery to shop (PLC)	0.50	18-Mar-22	23-Mar-22	5	0%	0%	Gantt bar for 141: Delivery to shop (PLC)													
142	DPIC-PO-NEC-299-R2-4.1.3.2.10 Other mater		1.00	04-Jan-22	13-Feb-22	40	100%	0%	Gantt bar for 142: DPIC-PO-NEC-299-R2-4.1.3.2.10 Other mater													
143	177	PO placement (Other material (Domes	0.10	04-Jan-22	09-Jan-22	5	100%	0%	Gantt bar for 143: PO placement (Other material (Domes													
144	178	EX Work (Other material(Domestic))	0.40	09-Jan-22	08-Feb-22	30	100%	0%	Gantt bar for 144: EX Work (Other material(Domestic))													
145	179	Delivery to shop (Other material(Dome	0.50	08-Feb-22	13-Feb-22	5	100%	0%	Gantt bar for 145: Delivery to shop (Other material(Dome													
146	DPIC-PO-NEC-299-R2-4.1.3.1 ForeignSupply		25.00	14-Nov-21 A	11-Sep-22	301	23.47%	7.68%	Gantt bar for 146: DPIC-PO-NEC-299-R2-4.1.3.1 ForeignSupply													
147	DPIC-PO-NEC-299-R2-4.1.3.1.1 Special Valves		1.70	02-Jan-22	15-Jun-22	165	21%	0%	Gantt bar for 147: DPIC-PO-NEC-299-R2-4.1.3.1.1 Special Valves													
148	105	PO placement (Other Valves)	0.17	02-Jan-22	11-Jan-22	10	100%	0%	Gantt bar for 148: PO placement (Other Valves)													
149	106	EX Work (Other Valves)	0.68	12-Jan-22	11-May-22	120	27.5%	0%	Gantt bar for 149: EX Work (Other Valves)													
150	107	Custom clearance (Other Valves)	0.51	12-May-22	10-Jun-22	30	0%	0%	Gantt bar for 150: Custom clearance (Other Valves)													
151	108	Delivery to shop (Other Valves)	0.34	11-Jun-22	15-Jun-22	5	0%	0%	Gantt bar for 151: Delivery to shop (Other Valves)													
152	DPIC-PO-NEC-299-R2-4.1.3.1.2 Instrument		1.70	29-Jan-22	14-May-22	105	13.42%	0%	Gantt bar for 152: DPIC-PO-NEC-299-R2-4.1.3.1.2 Instrument													
153	110	PO placement (Instrument)	0.17	29-Jan-22	08-Feb-22	10	100%	0%	Gantt bar for 153: PO placement (Instrument)													
154	111	EX Work (Instrument)	0.68	08-Feb-22	09-Apr-22	60	8.56%	0%	Gantt bar for 154: EX Work (Instrument)													
155	112	Custom clearance (Instrument)	0.51	09-Apr-22	09-May-22	30	0%	0%	Gantt bar for 155: Custom clearance (Instrument)													
156	113	Delivery to shop (Instrument)	0.34	09-May-22	14-May-22	5	0%	0%	Gantt bar for 156: Delivery to shop (Instrument)													
157	DPIC-PO-NEC-299-R2-4.1.3.1.3 Electrical (El		5.00	29-Dec-21 A	11-Sep-22	256	16.69%	10%	Gantt bar for 157: DPIC-PO-NEC-299-R2-4.1.3.1.3 Electrical (El													
158	115	PO placement (Electrical (Electro motc	0.50	29-Dec-21 A	08-Jan-22	10	100%	100%	Gantt bar for 158: PO placement (Electrical (Electro motc													
159	116	EX Work (Electrical (Electro motor))	2.00	08-Jan-22 A	12-Aug-22	216	16.78%	0%	Gantt bar for 159: EX Work (Electrical (Electro motor))													
160	117	Custom clearance (Electrical (Electro i	1.50	12-Aug-22	06-Sep-22	25	0%	0%	Gantt bar for 160: Custom clearance (Electrical (Electro i													
161	118	Delivery to shop (Electrical (Electro mc	1.00	06-Sep-22	11-Sep-22	5	0%	0%	Gantt bar for 161: Delivery to shop (Electrical (Electro mc													
162	DPIC-PO-NEC-299-R2-4.1.3.1.4 Filter		1.70	22-Dec-21 A	06-Apr-22	105	38.81%	0%	Gantt bar for 162: DPIC-PO-NEC-299-R2-4.1.3.1.4 Filter													
163	120	PO placement (Filter)	0.17	22-Dec-21 A	01-Jan-22	10	100%	0%	Gantt bar for 163: PO placement (Filter)													
164	121	EX Work (Filter)	0.68	01-Jan-22	02-Mar-22	60	72.08%	0%	Gantt bar for 164: EX Work (Filter)													
165	122	Custom clearance (Filter)	0.51	02-Mar-22	01-Apr-22	30	0%	0%	Gantt bar for 165: Custom clearance (Filter)													
166	123	Delivery to shop (Filter)	0.34	01-Apr-22	06-Apr-22	5	0%	0%	Gantt bar for 166: Delivery to shop (Filter)													
167	DPIC-PO-NEC-299-R2-4.1.3.1.5 Oil pump & C		1.70	16-Dec-21 A	04-Jun-22	170	26.89%	10%	Gantt bar for 167: DPIC-PO-NEC-299-R2-4.1.3.1.5 Oil pump & C													
168	125	PO placement (Oil pump & Oil separat	0.17	19-Dec-21 A	28-Dec-21	10	100%	100%	Gantt bar for 168: PO placement (Oil pump & Oil separat													
169	126	EX Work (Oil pump & Oil separator)	0.68	16-Dec-21 A	05-May-22	140	42.23%	0%	Gantt bar for 169: EX Work (Oil pump & Oil separator)													
170	127	Custom clearance (Oil pump & Oil sep	0.51	05-May-22	30-May-22	25	0%	0%	Gantt bar for 170: Custom clearance (Oil pump & Oil sep													

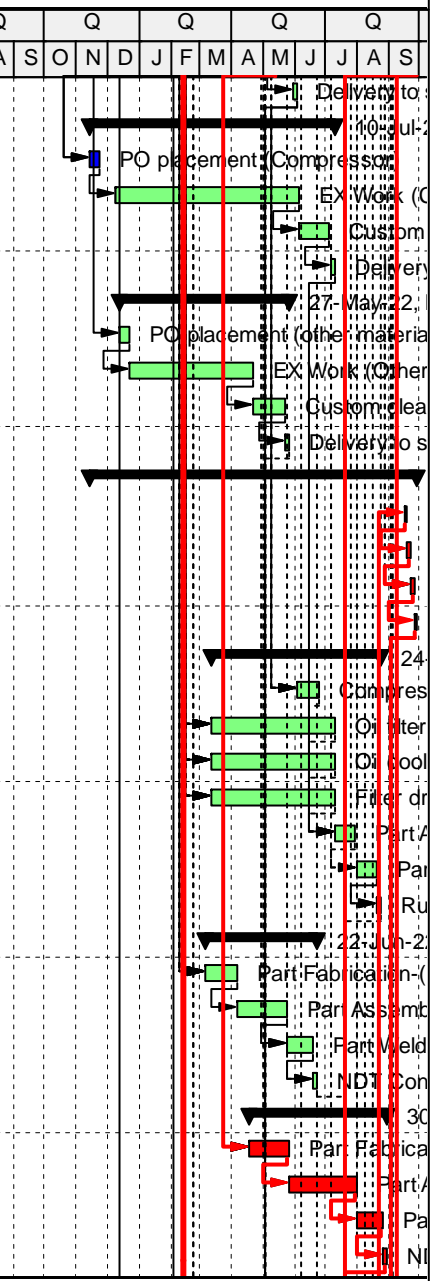
█ Actual Level of Effort █ Remaining Work
█ Actual Work █ Critical Remaini...

some of finish and start dates is not visible. shall be modified.

actual start date for fabrication must be modified.
(fabrication in this month has been started)

Actual progress for all activity shall be modified based on Excel file.

DPIC-PO-NEC-299-T00Z										Classic Schedule Layout										19-Feb-22 14:57									
#	Activity ID	Activity Name	Budgeted Labor Cost	Start	Finish	Original Duration	Schedule % Complete	Performance % Complete		A	S	O	N	D	J	F	M	A	M	J	J	A	S						
171	128	Delivery to shop (Oil pump & Oil separ	0.34	30-May-22	04-Jun-22	5	0%	0%																					
172	DPIC-PO-NEC-299-R2-4.1.3.1.3 Compressor		12.50	14-Nov-21 A	10-Jul-22	238	25.11%	10%																					
173	130	PO placement (Compressor)	1.25	14-Nov-21 A	24-Nov-	10	100%	100%																					
174	131	EX Work (Compressor)	5.00	08-Dec-21 A	05-Jun-22	180	37.78%	0%																					
175	132	Custom clearance (Compressor)	3.75	06-Jun-22	05-Jul-22	30	0%	0%																					
176	133	Delivery to shop (Compressor)	2.50	06-Jul-22	10-Jul-22	5	0%	0%																					
177	DPIC-PO-NEC-299-R2-4.1.3.1.7 Other material		0.70	13-Dec-21	27-May-	165	27.42%	0%																					
178	135	PO placement (other material)	0.07	13-Dec-21	23-Dec-	10	100%	0%																					
179	136	EX Work (Other material)	0.28	23-Dec-21	22-Apr-22	120	43.54%	0%																					
180	137	Custom clearance (Other material)	0.21	22-Apr-22	22-May-	30	0%	0%																					
181	138	Delivery to shop (Other material)	0.14	22-May-22	27-May-	5	0%	0%																					
182	DPIC-PO-NEC-299-R2-4.1.4 Fabrication		45.00	14-Nov-21 A	28-Sep-	319	20.7%	13.44%																					
183	214	Visual & DIM. Inspection	1.00	15-Sep-22	18-Sep-	3	0%	0%																					
184	215	Surface Preparation	0.50	18-Sep-22	21-Sep-	3	0%	0%																					
185	216	Painting	0.50	21-Sep-22	26-Sep-	5	0%	0%																					
186	217	Final Check	0.50	26-Sep-22	28-Sep-	2	0%	0%																					
187	DPIC-PO-NEC-299-R2-4.1.4.1 Fabrication For C		4.25	12-Mar-22	24-Aug-	165	0%	0%																					
188	182	Compressor unit Fabrication	1.00	04-Jun-22	24-Jun-22	20	0%	0%																					
189	183	Oil filter	0.50	12-Mar-22	10-Jul-22	120	0%	0%																					
190	184	Oil cooler	1.00	12-Mar-22	10-Jul-22	120	0%	0%																					
191	185	Filter dryer	0.25	12-Mar-22	10-Jul-22	120	0%	0%																					
192	186	Part Assembly	1.00	11-Jul-22	30-Jul-22	20	0%	0%																					
193	187	Part Welding	0.25	31-Jul-22	19-Aug-	20	0%	0%																					
194	188	Running test	0.25	20-Aug-22	24-Aug-	5	0%	0%																					
195	DPIC-PO-NEC-299-R2-4.1.4.2 Fabrication For C		4.00	06-Mar-22	22-Jun-22	108	0%	0%																					
196	190	Part Fabrication-(cutting,rolling,casting)	2.00	06-Mar-22	05-Apr-22	30	0%	0%																					
197	191	Part Assembly	1.00	05-Apr-22	25-May-	50	0%	0%																					
198	192	Part Welding	0.50	25-May-22	19-Jun-22	25	0%	0%																					
199	193	NDT Condensor	0.50	19-Jun-22	22-Jun-22	3	0%	0%																					
200	DPIC-PO-NEC-299-R2-4.1.4.3 Fabrication For H		4.00	17-Apr-22	30-Aug-	135	0%	0%																					
201	195	Part Fabrication-(cutting,rolling,casting)	2.00	17-Apr-22	27-May-	40	0%	0%																					
202	196	Part Assembly	1.00	27-May-22	31-Jul-22	65	0%	0%																					
203	197	Part Welding	0.50	31-Jul-22	25-Aug-	25	0%	0%																					
204	198	NDT Hexane chiller	0.50	25-Aug-22	30-Aug-	5	0%	0%																					



█ Actual Level of Effort █ Remaining Work
█ Actual Work █ Critical Remaini...

some of finish and start dates is not visible.
shall be modified.

****Actual progress for all activity shall be modified based on Excel file.****

DPIC-PO-NEC-299-1002			Classic Schedule Layout					19-Feb-22 14:57												
#	Activity ID	Activity Name	Budgeted Labor Cost	Start	Finish	Original Duration	Schedule % Complete	Performance % Complete	Gantt Chart (A S O N D J F M A M J J A S)											
205	DPIC-PO-NEC-299-R2-4.1.4.4 Fabrication For S		2.00	07-Jan-22	29-Mar-22	81	69.84%	0%	[Gantt bar for 205: 07-Jan-22 to 29-Mar-22]											
206	200	Part Fabrication-(cutting,rolling,casting)	0.75	07-Jan-22	27-Jan-22	20	100%	0%	[Gantt bar for 206: 07-Jan-22 to 27-Jan-22]											
207	201	Part Assembly	0.75	27-Jan-22	16-Feb-22	20	86.25%	0%	[Gantt bar for 207: 27-Jan-22 to 16-Feb-22]											
208	202	Part Welding	0.25	28-Feb-22	19-Mar-22	20	0%	0%	[Gantt bar for 208: 28-Feb-22 to 19-Mar-22]											
209	203	NDT Skid	0.25	20-Mar-22	29-Mar-22	10	0%	0%	[Gantt bar for 209: 20-Mar-22 to 29-Mar-22]											
210	DPIC-PO-NEC-299-R2-4.1.4.5 Fabrication For C		1.25	29-May-22	23-Jul-22	55	0%	0%	[Gantt bar for 210: 29-May-22 to 23-Jul-22]											
211	205	Part Fabrication-(cutting,rolling,casting)	0.50	29-May-22	18-Jun-22	20	0%	0%	[Gantt bar for 211: 29-May-22 to 18-Jun-22]											
212	206	Part Assembly	0.25	18-Jun-22	03-Jul-22	15	0%	0%	[Gantt bar for 212: 18-Jun-22 to 03-Jul-22]											
213	207	Part Welding	0.25	03-Jul-22	18-Jul-22	15	0%	0%	[Gantt bar for 213: 03-Jul-22 to 18-Jul-22]											
214	208	Hydro test	0.25	18-Jul-22	23-Jul-22	5	0%	0%	[Gantt bar for 214: 18-Jul-22 to 23-Jul-22]											
215	DPIC-PO-NEC-299-R2-4.1.4.6 Assembly of pack		2.00	14-Aug-22	15-Sep-22	32	0%	0%	[Gantt bar for 215: 14-Aug-22 to 15-Sep-22]											
216	210	Inter connecting piping	1.00	14-Aug-22	29-Aug-22	15	0%	0%	[Gantt bar for 216: 14-Aug-22 to 29-Aug-22]											
217	211	Part Assembly	0.50	29-Aug-22	03-Sep-22	5	0%	0%	[Gantt bar for 217: 29-Aug-22 to 03-Sep-22]											
218	212	Part Welding	0.25	03-Sep-22	10-Sep-22	7	0%	0%	[Gantt bar for 218: 03-Sep-22 to 10-Sep-22]											
219	213	NDT packages on skid	0.25	10-Sep-22	15-Sep-22	5	0%	0%	[Gantt bar for 219: 10-Sep-22 to 15-Sep-22]											
220	DPIC-PO-NEC-299-R2-4.1.4.7 Fabrication status		25.00	14-Nov-21 A	11-Sep-22	278	31.67%	24.2%	[Gantt bar for 220: 14-Nov-21 A to 11-Sep-22]											
221	A1000	Electro motor	9.00	29-Dec-21 A	11-Sep-22	233	20.17%	25%	[Gantt bar for 221: 29-Dec-21 A to 11-Sep-22]											
222	A1010	Oil pump & Oil Separator	2.00	19-Dec-21 A	04-Jun-22	160	35.63%	15%	[Gantt bar for 222: 19-Dec-21 A to 04-Jun-22]											
223	A1020	Compressor	14.00	14-Nov-21 A	10-Jul-22	239	38.49%	25%	[Gantt bar for 223: 14-Nov-21 A to 10-Jul-22]											
224	DPIC-PO-NEC-299-R2-4.1.5 FINAL INSPECTIC		10.00	28-Sep-22	30-Sep-22	2	0%	0%	[Gantt bar for 224: 28-Sep-22 to 30-Sep-22]											
225	219	FINAL INSPECTION TEST and RELE	10.00	28-Sep-22	30-Sep-22	2	0%	0%	[Gantt bar for 225: 28-Sep-22 to 30-Sep-22]											
226	DPIC-PO-NEC-299-R2-4.1.6 Final Data Book		5.00	30-Sep-22	04-Oct-22	4	0%	0%	[Gantt bar for 226: 30-Sep-22 to 04-Oct-22]											
227	221	VENDOR FINAL DATA BOOK	5.00	30-Sep-22	04-Oct-22	4	0%	0%	[Gantt bar for 227: 30-Sep-22 to 04-Oct-22]											

some of finish and start dates is not visible. shall be modified.

█ Actual Level of Effort █ Remaining Work
█ Actual Work █ Critical Remaini...