

NOZZLE	SIZE	RATING	FORCE (KN)			MOMENT (KN-m)		
			FX	FZ	FY	MX	MZ	MY
N3/N4	14"	300#	18.96	18.96	18.96	18	18	18
N2	12"	300#	15.72	15.72	15.72	13.44	13.44	13.44
N1A~D B1A~D	6"	300#	6.84	6.84	6.84	3.48	3.48	3.48
N14	3"	300#	3.48	3.48	3.48	0.84	0.84	0.84

- NOTE
- UNLESS OTHERWISE NOTED ALL DIMENSIONS ARE IN MILLIMETERS.
 - UNLESS OTHERWISE NOTED OUTSIDE PROJECTION OF NOZZLES ARE MEASURED FROM C.L. OF EXCHANGER TO THE EXTREME FACE OF NOZZLE.
 - ALL WELDS CONTINUOUS EXCEPT NOTED.
 - BOLT HOLES FOR FLANGES SHALL BE STRADDLED TO EQUIPMENT MAIN AXIS.
 - ALL R.F. FLANGES SHALL HAVE SMOOTH FINISH FACING WITH RA= 3.2µm TO RA= 6.3µm
 - BASE LINE (B.L.) INDICATES THE GASKET CONTACT SURFACE OF TUBE SHEET.
 - REINFORCING PADS FOR NOZZLES SHALL BE TAPPED WITH AT LEAST ONE (1) TELL TALE HOLE NPT 1/4" WITH VENT PIPE.

- DIMENSIONS REFER TO BAFFLES ARE MEASURED FROM C.L. OF EACH PLATE.
- GASKET MATERIAL FOR ASME B16.20: SPIRAL WOUND (14.5)
 - FILLER: GRAPHITE
 - INNER RING: 304 S.S.
 - HOOP: 304 S.S.
 - OUTER RING: 304 S.S.
- GASKET MATERIAL: SPIRAL WOUND (14.5)
 - FILLER: GRAPHITE
 - INNER RING: 304 S.S.
 - HOOP: 304 S.S.
 - OUTER RING: 304 S.S.
- SPARE PART

	CONSTRUCTION & COMMISSIONING
GASKETS	100%
STUD BOLTS & NUTS	5% (MIN. 2SETS)

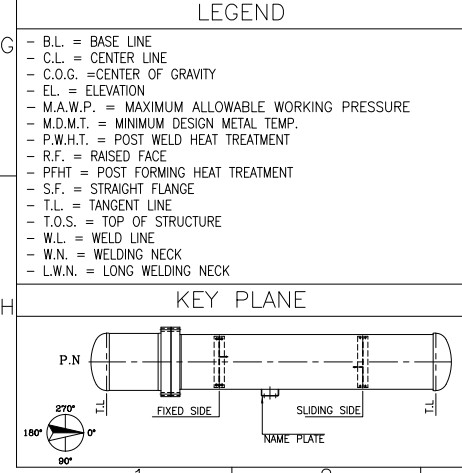
- ALL EXPOSED SURFACE SHALL BE PAINTED AS FOLLOWS: EXPOSED SURFACE FOR EXTERNAL PARTS: VD-GPIC-MA-3029-3029-0063 EXPOSED SURFACE OF INTERNAL: NOT PARTS REQUIRED
- 1/1.4 FACTOR FOR LOAD COMBINATION HAS BEEN APPLIED
- TUBES SHALL BE SEAMLESS
- GASKET CONTACT SURFACE OF TUBE SHEET & GIRTH FLANGE: RA= 3.2 to 6.3 µm (125 to 250 µin. AARH)

SEISMIC (NOTE 13)		WIND	
SHEAR (kgf)	MOMENT (kgf-m)	SHEAR (kgf)	MOMENT (kgf-m)
5085	7755	964	1470
BUNDLE PULLING LOAD		17250 kgf	

SHELL		GENERAL	
BARREL	SA-516 70N	SLIDING BAR/ROD	SA-516 70N/SA-36
FLANGES	SA350-LF2 CL.1N	SEALING STRIP	-
NOZZLE FROM PIPE	SA333-6	DUMMY TUBE/SEAL ROD	-
NOZZLE FROM PLATE	-	BLINDED NOZZLE BOLT/NUT	SA320 L7/SA194-4
NOZZLE FLANGES/FORGED NOZZLE	SA350-LF2 CL.1N	BLINDED NOZZLE GASKET	(NOTE 9)
COUPLINGS & PLUGS	-	TEST RING	-
NOZZLE REINF. PAD	SA-516 70N	GASKETS	
EXCHANGERS SUPPORTS	SA-516 70N	SHELL/COVER	-
SUPPORT WEAR PLATE	SA-516 70N	SHELL/TUBESHEET	(NOTE 10)
STIFFENING RINGS	-	CHANNEL/TUBESHEET	(NOTE 10)
EXPANSION JOINT	-	CHANNEL/COVER	-
LINING	-	FLOATING HEAD	-
SHELL COVER		FLOATING HEAD	
BARREL	-	COVER	-
COVER	SA-516 70N	FLANGES	-
FLANGES	-	SPLIT RING	-
CHANNEL		BOLTS & NUTS	
BARREL	SA-516 70N	SHELL/COVER	-
FLANGES	SA350-LF2 CL.1N	SHELL/CHANNEL	SA320-L7/SA194-4
COVER	SA-516 70N	CHANNEL/COVER	-
FLAT COVER	-	FLOATING HEAD	-
NOZZLE FROM PIPE	SA333-6	SETTING BOLTS/NUTS	SA193 B7 / SA194 2H
NOZZLE FROM PLATE	SA-516 70N	TUBE BUNDLE	
NOZZLE FLANGES/FORGED NOZZLE	SA350-LF2 CL.1N	TUBES	SA334-6
COUPLINGS & PLUGS	-	TUBESHEETS	SA350-LF2 CL1
NOZZLE REINF. PAD	SA-516 70N	BAFFLES/SUPPORTS/MP. PLATE	SA 516-70N
PARTITION PLATES	SA-516 70N	TIE RODS & SPACERS	SA 36/SA334-6

CODE	ASME SEC. VIII DIV.1 (2021 ED.)		TYPE	BXU/HORIZONTAL
TEMA CLASS	TEMA 10TH ED. (CLASS "R")		CODE STAMP	NO
LOCAL REGULATION	NO		WIND / SEISMIC CODE	ASCE 7-2016
FLUID	PROPYLENE	HEXANE	DESIGN CATEGORY/SITE CLASS	D/C
DESIGN (INT./EXT.)	PRESS. barg	25/F.V.	WIND EXPOSURE / VELOCITY (km/h)	C / 202
TEMP. (°C)	125	125	Fa/Fv/Ss/S1/Sds/Sd1	1.09/1.25/1.11/0.4/0.81/0.33
STEAM OUT CONDITION	-	-	SEISMIC IMPORTANCE FACTOR/RESPONSE FACTOR	1.25 / 3
OPER. (IN/OUT)	PRESS. barg	1.617	INSULATION (TYP/THK. mm)	COLD/50 COLD/50
TEMP. (°C)	-24.43/-24.05	-16/-20.5	INSULATION DENSITY Kg/m³	230 230
CORROSION ALLOWANCE (mm)	3	3	FIRE PROOFING THK./DENSITY	- Kg/m³
JOINT EFFICIENCY (S/H)	1.0/1.0	1.0/1.0	PAINTING	NOTE 12
RADIOGRAPHY (S/H)	FULL/FULL	FULL/FULL	TUBE TO TUBESHEET JOINT	HEAVY EXPANDED WITH 2 DRUMS WITH SEAL WELD
HYDRO. TEST PRESS. (SHOP/FIELD)	barg	32.5/32.5	NO. OF PASS	1(ONE) 2(TWO)
HYDRO. TEST TYPE	UG-99b (boothole 35)	UG-99b (boothole 35)	BUNDLE (KG)	11500
PNEUM. TEST PRESS. barg	-	-	ERECTION (KG)	17400 (EXCHANGER) 2950 (PIPE HEADER)
M.O.M.(REQUIRED/CALCULATED) (°C)	-45/-46	-45/-46	FABR. (KG)	16300 (EXCHANGER) 2800 (PIPE HEADER)
M.A.W.P (HOT & CORRODED) barg	25	25	OPER. (KG)	24700
M.A.P (NEW & COLD) barg	25	25	SHOP TEST (KG)	25650
P.W.H.T.	NO	NO	FIELD TEST (KG)	25400
IMPACT TEST	NO	NO	SURFACE AREA/SHELL (M²)	624.6
PFHT (FOR HEAD)	YES	YES	VOLUME (M³)	4.8 3.3
			FLUID DENSITY (kg/m³)	579.45 698.16
			MEAN METAL TEMP. (°C)	- -
			SHELL SIDE/TUBE SIDE	

ITEM	SERVICE	QTY.	SIZE	CONNECTION		NECK	REINF. PAD	PROJ. (NOTE 2)	REMARKS	
				TYPE	RATING					
N1A~D	PROPYLENE INLET	4	6"	W.N.	300#	R.F.	80	-	270 14	SEE DWG.
B1A~D	PROPYLENE INTERMEDIATE	4	6"	W.N.	300#	R.F.	80	-	270 14	762
B1E~H	PROPYLENE INTERMEDIATE	4	6"	W.N.	300#	R.F.	80	-	270 12	658
N2	PROPYLENE OUTLET	1	12"	W.N.	300#	R.F.	80	-	480 12	SEE DWG.
N3	PROCESS INLET	1	14"	W.N.	300#	R.F.	-	14	560 14	SEE DWG.
N4	PROCESS OUTLET	1	14"	W.N.	300#	R.F.	-	14	560 14	SEE DWG.
N5	PROPYLENE VENT	1	2"	W.N.	300#	R.F.	160	-	-	660
N6	PROPYLENE DRAIN	1	2"	W.N.	300#	R.F.	160	-	-	SEE DWG.
N10	LEVEL TRANSMITTER	1	2"	W.N.	300#	R.F.	160	-	-	SEE DWG.
N11	LEVEL TRANSMITTER	1	2"	W.N.	300#	R.F.	160	-	-	SEE DWG.
N13	OIL RECOVERY BOOT	1	6"	-	-	-	80	-	270 14	SEE DWG.
N14	RELIEF VALVE	1	3"	W.N.	300#	R.F.	160	-	190 12	660
N15	SPARE PURGE	1	1 1/2"	W.N.	300#	R.F.	160	-	-	SEE DWG.
S-11	OIL RECOVERY BOOT	1	3/4"	L.W.N.	300#	R.F.	-	14.25	-	SEE DWG.



03	18.Nov.25	IFR	D.S.H	F.T	A.M
02	25.Oct.25	IFR	D.S.H	F.T	A.M
01	07.Oct.25	IFR	D.S.H	F.T	A.M
00	26.Aug.25	IFR	D.S.H	F.T	A.M

REV. DATE Purpose of Issue Prepared Checked Approved

Signature

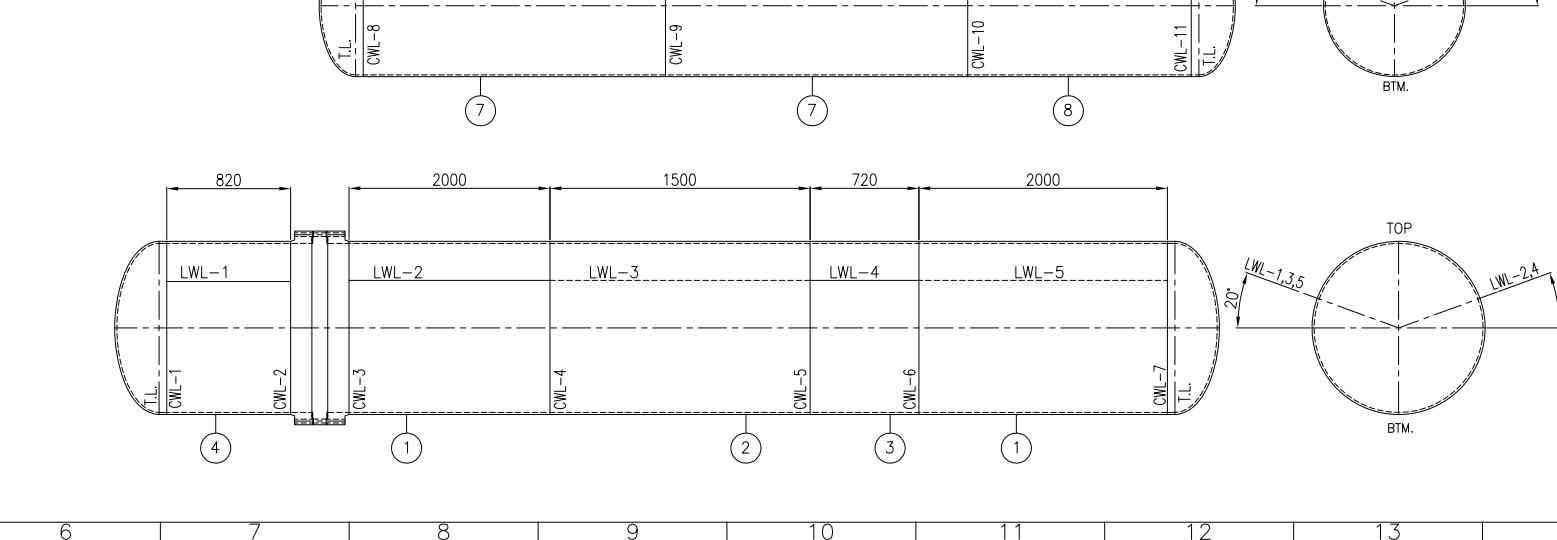
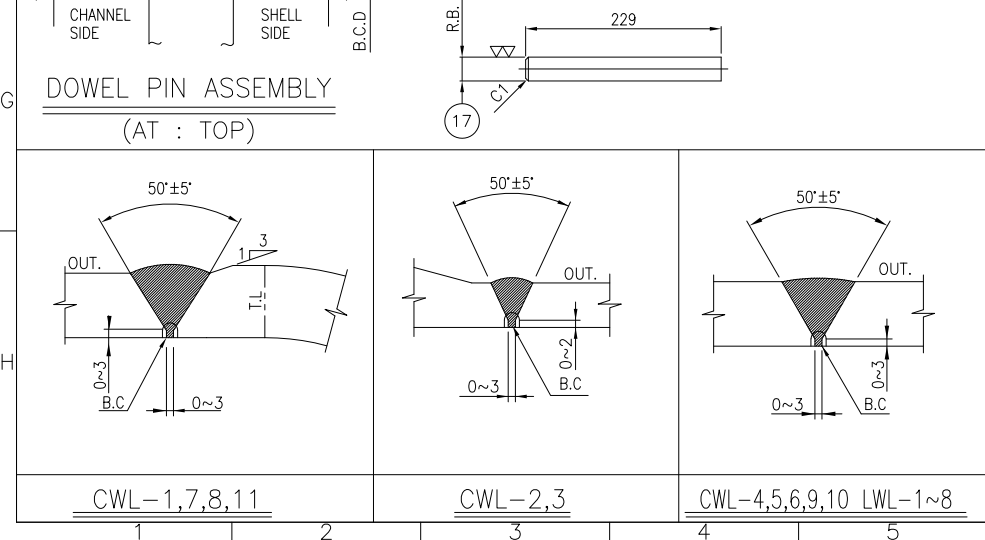
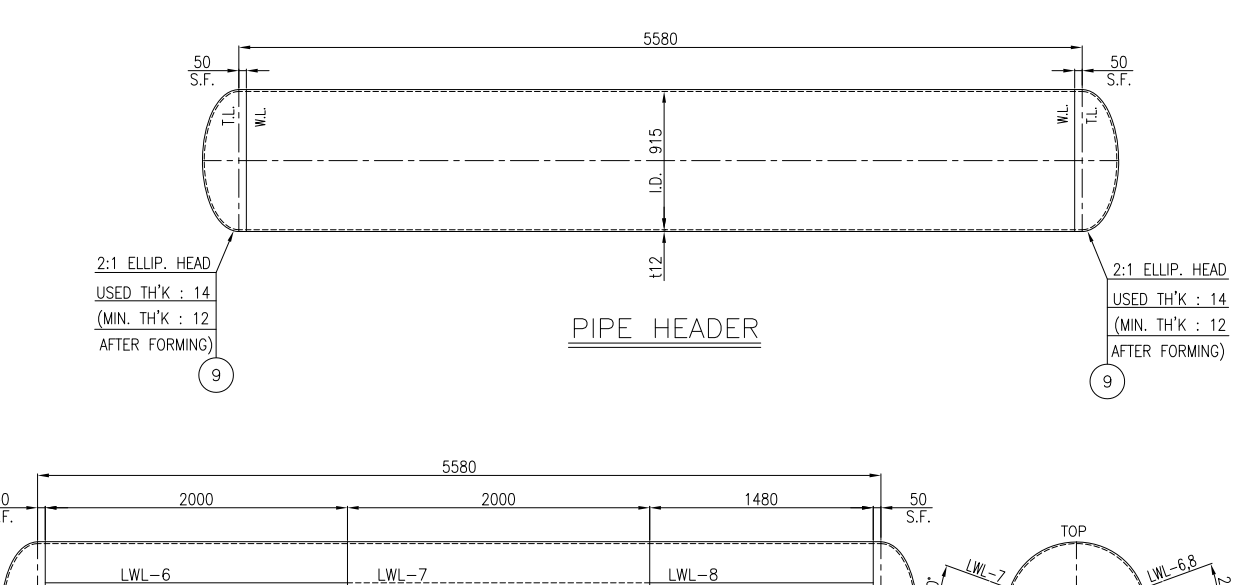
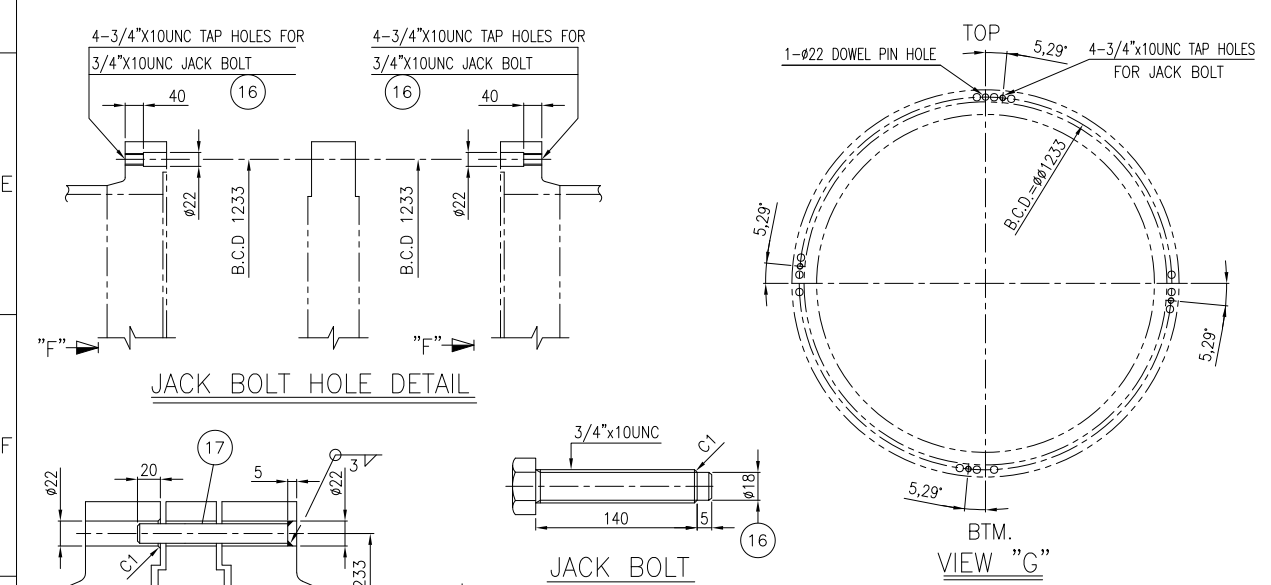
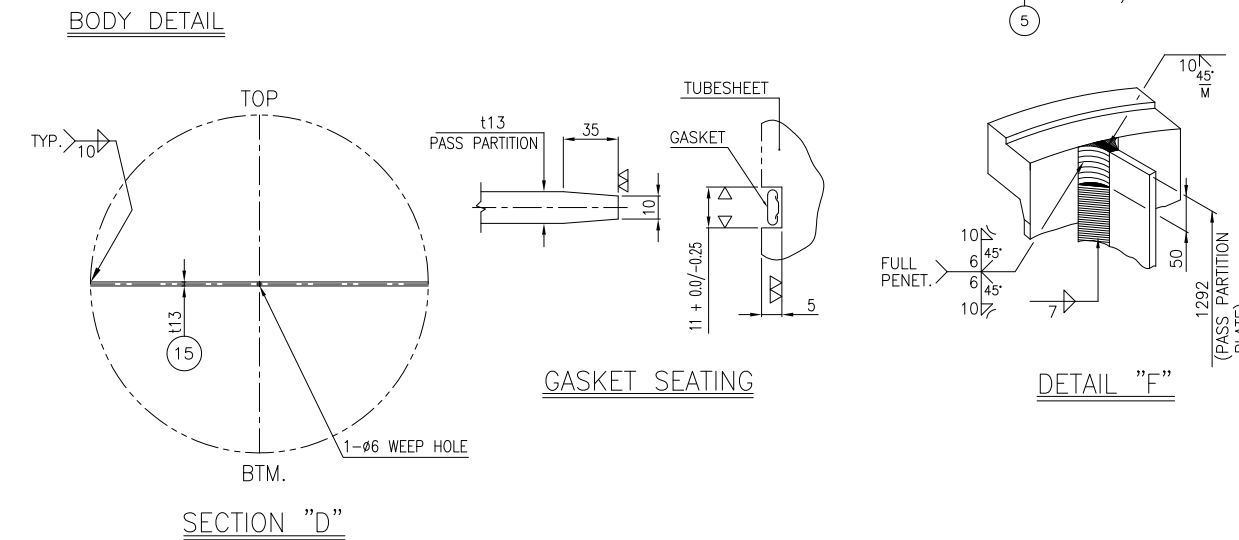
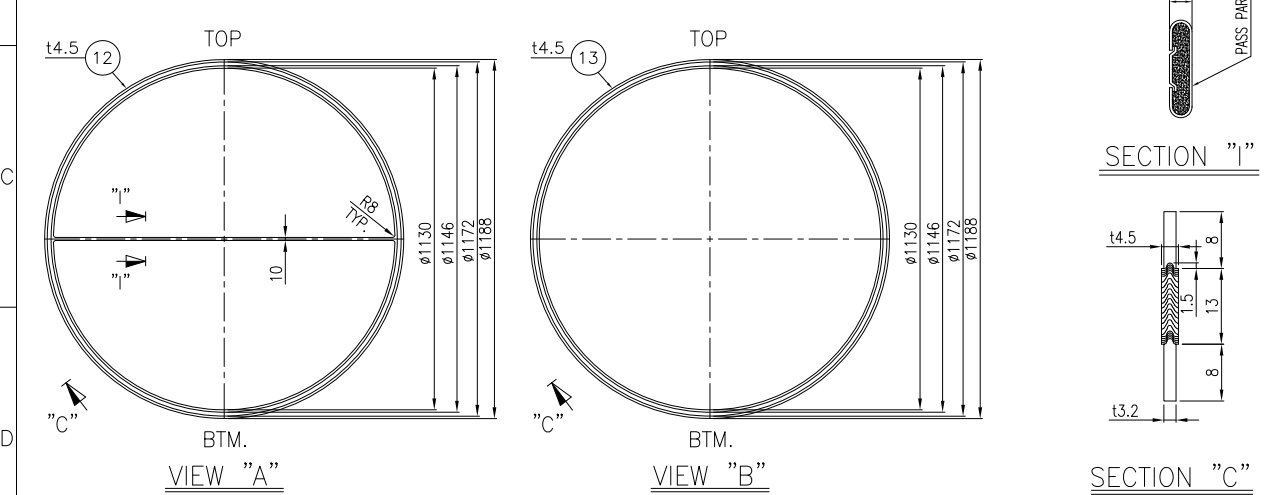
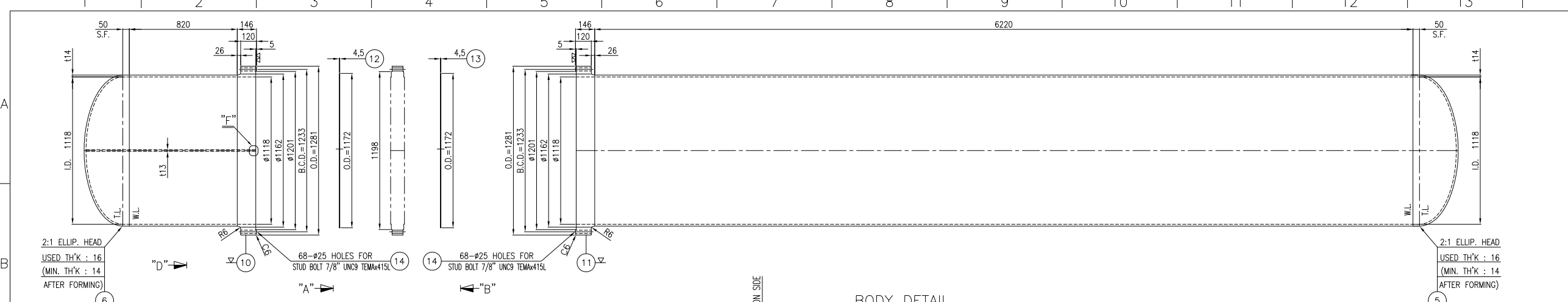
Gachsan Polymer Industries Company
HDPE Plant

CONTRACT NO.: GPI-CON-99-008

PO No.: GPIC-PT-MA-PO-000-3029 SCALE: 1:1

DRAWING TITLE: EVAPORATOR (CHILLER) DRAWING (E-6101) (GENERAL ARRANGEMENT)

DRAWING NO.	REV.	SHEET NO.	SIZE
VD-GPIC-MA-3029-3029-0089	03	1 OF 8	A3



- NOTE
- UNLESS OTHERWISE NOTED ALL DIMENSIONS ARE IN MILLIMETERS.
 - GASKET MATERIAL FOR : SPIRAL WOUND (14.5)
-FILLER : GRAPHITE
-HOOP : S.S. 316L
-INNER RING : S.S. 316L m=3, y=68.95N/mm².
-OUTER RING : 304 S.S.
 - ALL GIRTH FLANGE AND TUBE SHEET SHALL BE ULTRASONIC TESTED IN ACCORDANCE WITH ASME CODE SECTION V, AND SA-388 OR EQUIVALENT BEFORE ANY MACHINING. IN THIS REGARD, THE REQUIRED SURFACE PREPARATION SHALL BE PER FORMED.
 - PASS PARTITION GASKET: DOUBLE METAL JACKETED AISI 304/GRAPHITE FILLER

* FOR ONE SET

ITEM NO.	DESCRIPTION	QTY	UNIT	REMARKS
17	DOWEL PIN	304 S.S.	1	R.Ø20 x L229
16	JACK BOLT	304 S.S.	8	3/4"x10UNC x L140
15	PASS PARTITION PLATE	SA516-70N	1	t13 x 1180 x 1292
14	STUD B/2HEAVY NUTS	SA320-L7/SA194-4/68SETS	4SETS	t13 x 1180 x 1292
13	GASKET	SEE NOTE "2"	1	t4.5 (SEE DWG.)
12	GASKET	SEE NOTE "2"	1	t4.5 (SEE DWG.)
11	SHELL FLANGE	SA350-LF2 CL.1N	1	t146 x ID 1118 x O.D 1281
10	CHANNEL FLANGE	SA350-LF2 CL.1N	1	t146 x ID 1118 x O.D 1281
9	PIPE HEADER HEAD	SA-516 70N	2	USED THK14 (2:1 ELLIP.)
8	PIPE HEADER SHELL	SA-516 70N	1	t12 x 1480 x 3022
7	PIPE HEADER SHELL	SA-516 70N	2	t12 x 2000 x 3022
6	CHANNEL HEAD	SA-516 70N	2	USED THK16 (2:1 ELLIP.)
5	SHELL HEAD	SA-516 70N	1	USED THK16 (2:1 ELLIP.)
4	CHANNEL SHELL	SA-516 70N	1	t14 x 820 x 3556
3	SHELL	SA-516 70N	1	t14 x 720 x 3556
2	SHELL	SA-516 70N	1	t14 x 1500 x 3556
1	SHELL	SA-516 70N	2	t14 x 2000 x 3556

BILL OF MATERIAL

PART NO.	PART NAME	MATERIAL	REGULAR QUANTITY	SPARE QUANTITY	SPECIFICATION	REMARK
17	DOWEL PIN	304 S.S.	1		R.Ø20 x L229	
16	JACK BOLT	304 S.S.	8		3/4"x10UNC x L140	
15	PASS PARTITION PLATE	SA516-70N	1		t13 x 1180 x 1292	
14	STUD B/2HEAVY NUTS	SA320-L7/SA194-4/68SETS	4SETS		t13 x 1180 x 1292	H.D.G
13	GASKET	SEE NOTE "2"	1		t4.5 (SEE DWG.)	
12	GASKET	SEE NOTE "2"	1		t4.5 (SEE DWG.)	
11	SHELL FLANGE	SA350-LF2 CL.1N	1		t146 x ID 1118 x O.D 1281	
10	CHANNEL FLANGE	SA350-LF2 CL.1N	1		t146 x ID 1118 x O.D 1281	
9	PIPE HEADER HEAD	SA-516 70N	2		USED THK14 (2:1 ELLIP.)	
8	PIPE HEADER SHELL	SA-516 70N	1		t12 x 1480 x 3022	
7	PIPE HEADER SHELL	SA-516 70N	2		t12 x 2000 x 3022	
6	CHANNEL HEAD	SA-516 70N	2		USED THK16 (2:1 ELLIP.)	
5	SHELL HEAD	SA-516 70N	1		USED THK16 (2:1 ELLIP.)	
4	CHANNEL SHELL	SA-516 70N	1		t14 x 820 x 3556	
3	SHELL	SA-516 70N	1		t14 x 720 x 3556	
2	SHELL	SA-516 70N	1		t14 x 1500 x 3556	
1	SHELL	SA-516 70N	2		t14 x 2000 x 3556	

EVAPORATOR (CHILLER) DRAWING (E-6101)
(BODY DETAIL)

CONTRACT NO.: GPI-CON-99-008

PO No.: GPI-PT-MA-PO-000-3029

DRAWING TITLE:

REVISIONS:

REV.	DATE	Purpose of Issue	Prepared	Checked	Approved
03	18.Nov.25	IFR	D.S.H	F.T	A.M
02	25.Oct.25	IFR	D.S.H	F.T	A.M
01	07.Oct.25	IFR	D.S.H	F.T	A.M
00	26.Aug.25	IFR	D.S.H	F.T	A.M

Scale: 1:1

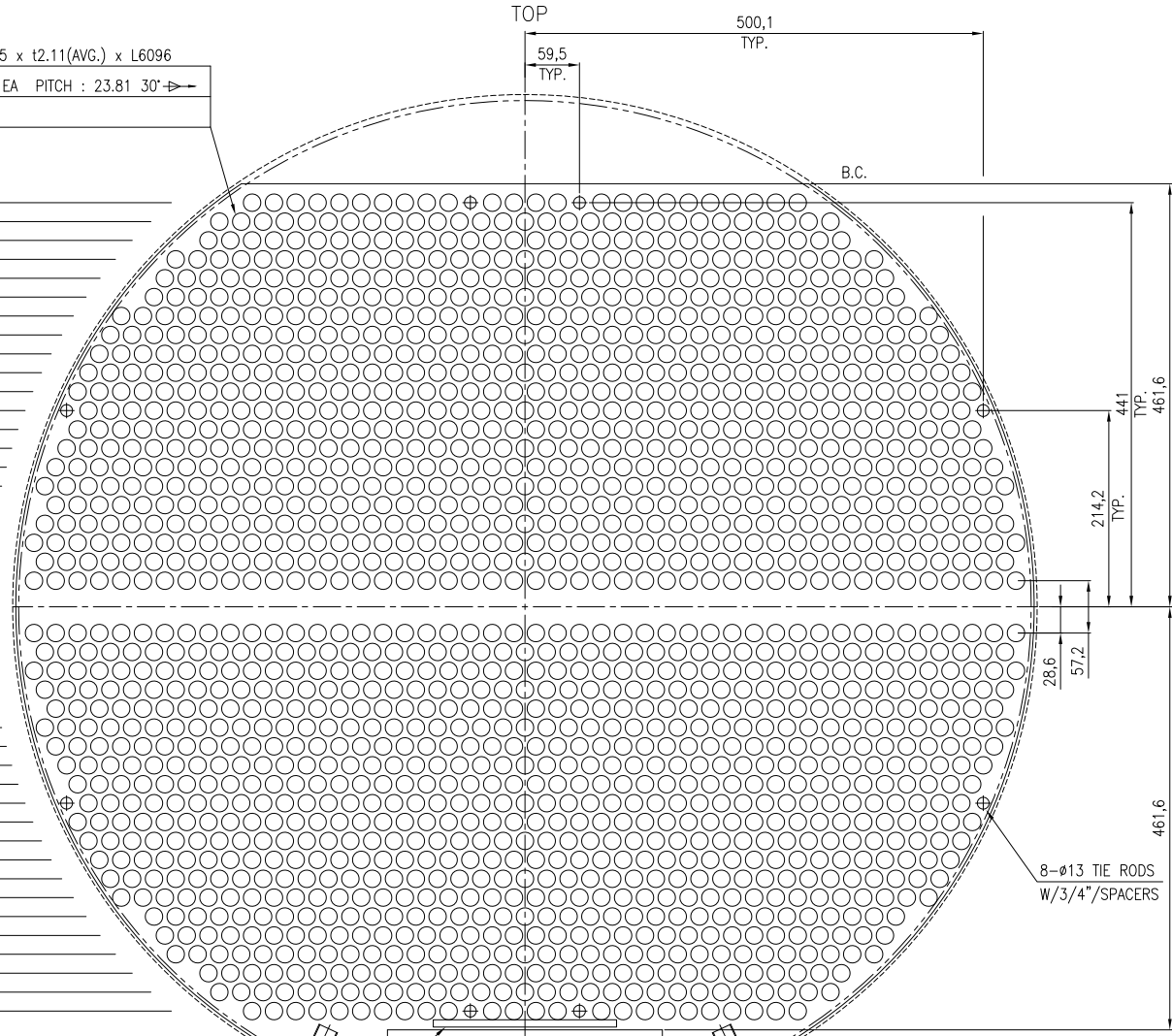
GPIC Logo

Gachsaran Polymer Industries Company
HDPE Plant

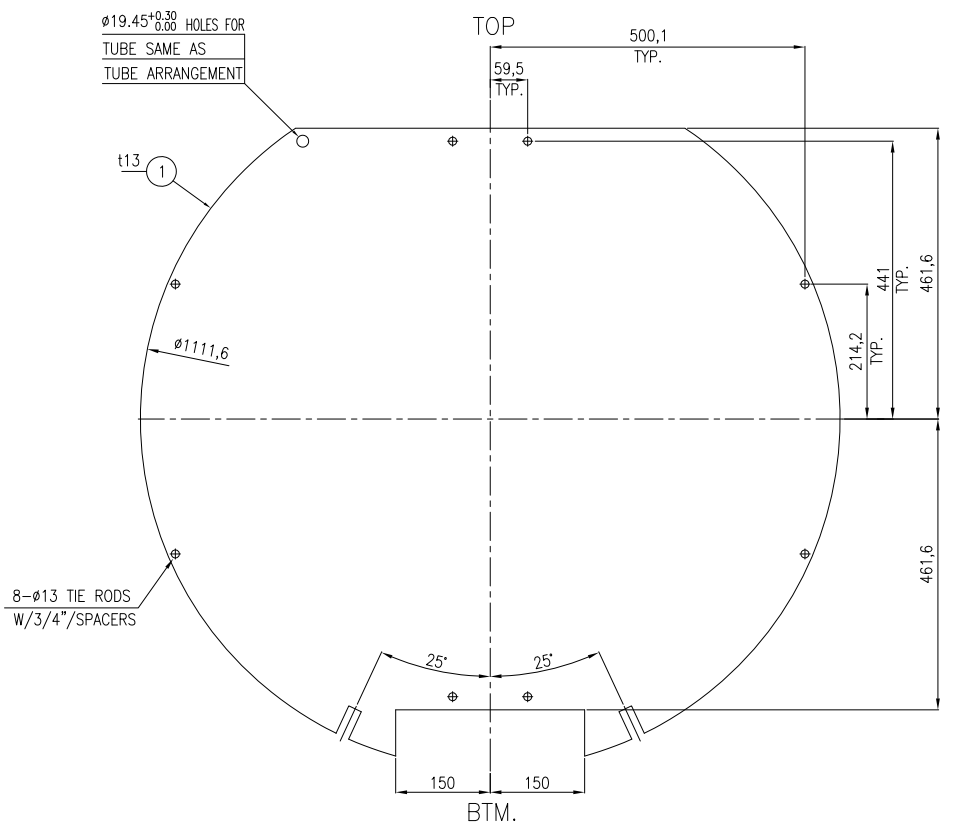
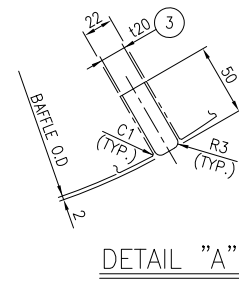
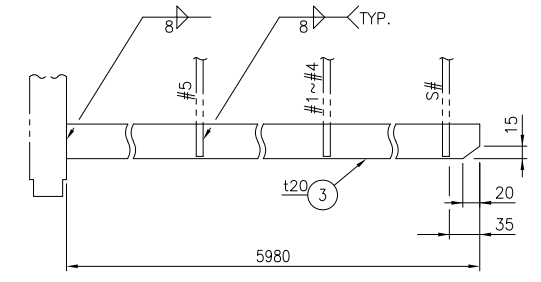
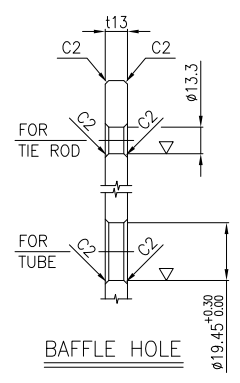
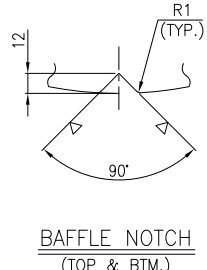
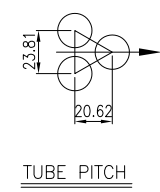
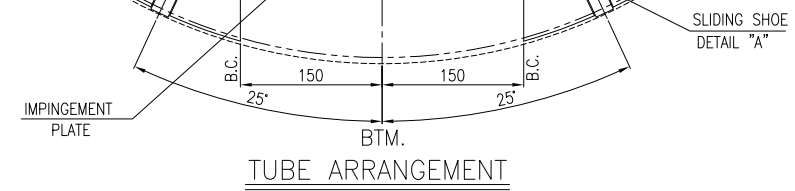
Signature: _____

TUBE SIZE : 0.D19.05 x t2.11(AVG.) x L6096
 REQ'D NO. : U-826 EA PITCH : 23.81 30' →
 (O.T.L : 1104.9)

24
29
30
33
34
35
38
39
40
41
42
42
43
44
45
46
46
45
46
45
44
45
44
42
43
42
41
41
40
39
38
35
34
33
30
29
24



TOTAL : 1652 EA



NOTE
 1. UNLESS OTHERWISE NOTED ALL DIMENSIONS ARE IN MILLIMETERS.

* FOR ONE SET						
2	SLIDING SHOE	SA-516-70N	2		120 x 50 x 5980	
1	FULL SUPPORT BAFFLE	SA 516-70N	6		113 x ø1111.6	
PART NO.	PART NAME	MATERIAL	QUANTITY	SPARE	SPECIFICATION	REMARK

BILL OF MATERIAL

REV.	DATE	Purpose of Issue	Prepared	Checked	Approved
03	18.Nov.25	IFR	D.SH	F.T	A.M
02	25.Oct.25	IFR	D.SH	F.T	A.M
01	07.Oct.25	IFR	D.SH	F.T	A.M
00	26.Aug.25	IFR	D.SH	F.T	A.M

EVAPORATOR (CHILLER) DRAWING (E-6101)
 (BUNDLE DETAIL 1/2)

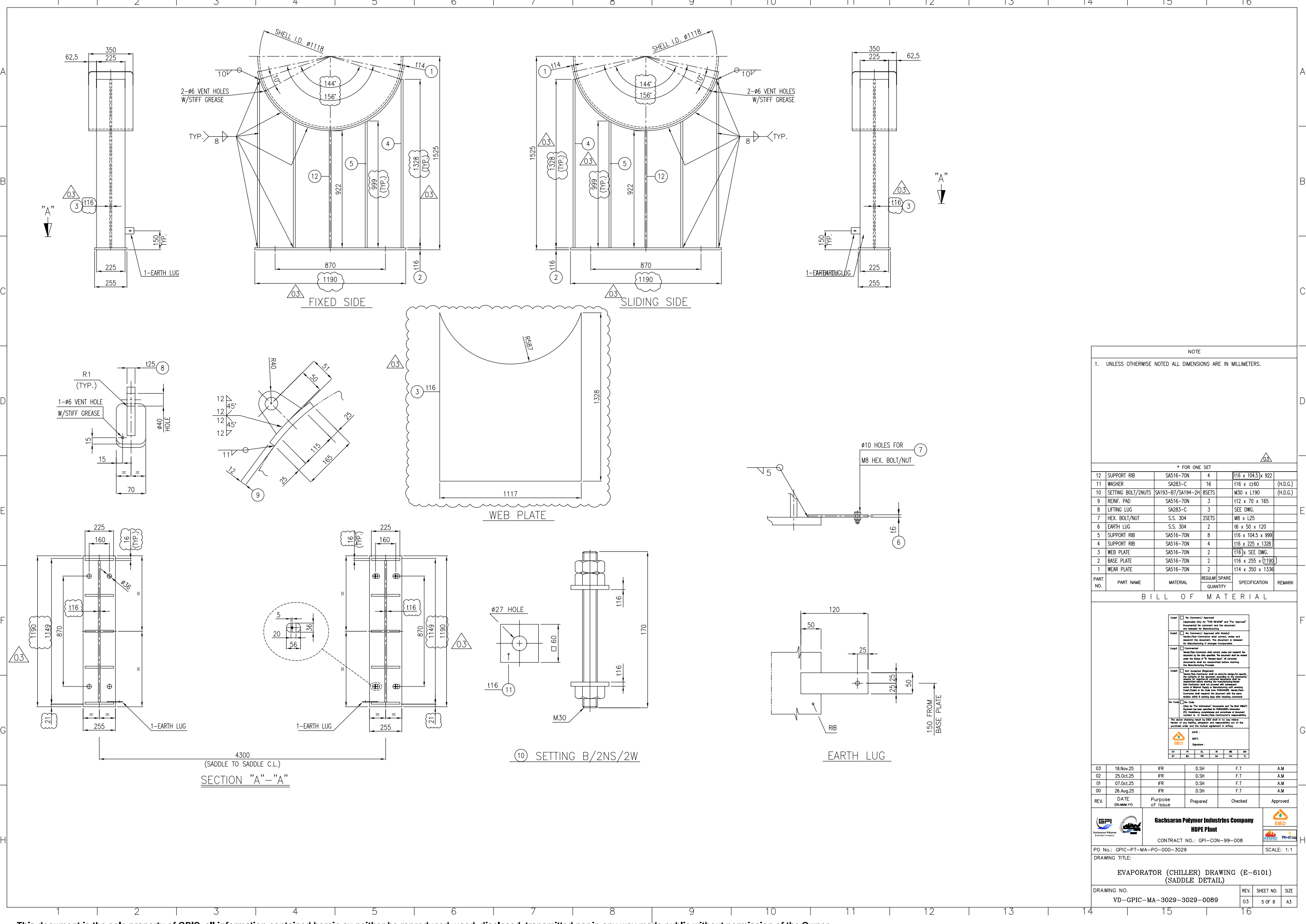
CONTRACT NO.: GPI-CON-99-008

PO No.: GPIC-PT-MA-PO-000-3029

SCALE: 1:1

DRAWING NO. V D-GPIC-MA-3029-3029-0089

REV. SHEET NO. SIZE
 03 3 OF 8 A3



NOTE
1. UNLESS OTHERWISE NOTED ALL DIMENSIONS ARE IN MILLIMETERS.

* FOR ONE SET						
PART NO.	PART NAME	MATERIAL	REGULAR QUANTITY	SPARE QUANTITY	SPECIFICATION	REMARK
12	SUPPORT RIB	SA516-70N	4		[116 x 1045] x 922	
11	WASHER	SA283-C	16		[116 x 60]	(H.D.G.)
10	SETTING BOLT/NUTS	SA193-B7/SA194-2H	8SETS		M30 x L190	(H.D.G.)
9	REIN. PAD	SA516-70N	3		M30 x 70 x 165	
8	LIFTING LUG	SA283-C	3		SEE DWG.	
7	HEX. BOLT/NUT	S.S. 304	2SETS		M8 x L25	
6	EARTH LUG	S.S. 304	2		16 x 50 x 120	
5	SUPPORT RIB	SA516-70N	8		[116 x 1045] x 999	
4	SUPPORT RIB	SA516-70N	4		[116 x 225 x 1328]	
3	WEB PLATE	SA516-70N	2		[116] x SEE DWG.	
2	BASE PLATE	SA516-70N	2		[116 x 255 x 1190]	
1	WEAR PLATE	SA516-70N	2		[114 x 350 x 1336]	

BILL OF MATERIAL

<input type="checkbox"/> No Comment/ Approval (Applicable Only for "FOR REVIEW" and "For Approval" Drawings to be reviewed and the amount released for Manufacturing.					
<input type="checkbox"/> No Comment/ Approval with Notes Vendor/Sub-Contractor shall correct, revise and resubmit the drawing. The amount to be released for Manufacturing shall be resubmitted before starting the Manufacturing Process.					
<input type="checkbox"/> Commented Vendor/Sub-Contractor shall correct, revise and resubmit the drawing by the due date. The amount shall be released under the Status of "To Be Released", if correct drawings are to be resubmitted before starting the Manufacturing Process.					
<input type="checkbox"/> Not Accepted/ Rejected Vendor/Sub-Contractor shall correct, revise and resubmit the drawing by the due date. The amount shall be released under the Status of "To Be Released", if correct drawings are to be resubmitted before starting the Manufacturing Process.					
<input type="checkbox"/> No Code (Only for "For Information" Drawings and "For Bill of Material" Drawings to be submitted to the Manufacturer for reference only. The amount shall be released under the Status of "To Be Released", if correct drawings are to be resubmitted before starting the Manufacturing Process.					
The amount to be released shall be submitted to the Vendor of any facility, utilization and responsibility out of the purchase order and the amount agreement in writing.					
DATE: _____ DESIGNED BY: _____ CHECKED BY: _____ APPROVED BY: _____					

03	18.Nov.25	IFR	D.SH	F.T	A.M
02	25.Oct.25	IFR	D.SH	F.T	A.M
01	07.Oct.25	IFR	D.SH	F.T	A.M
00	26.Aug.25	IFR	D.SH	F.T	A.M

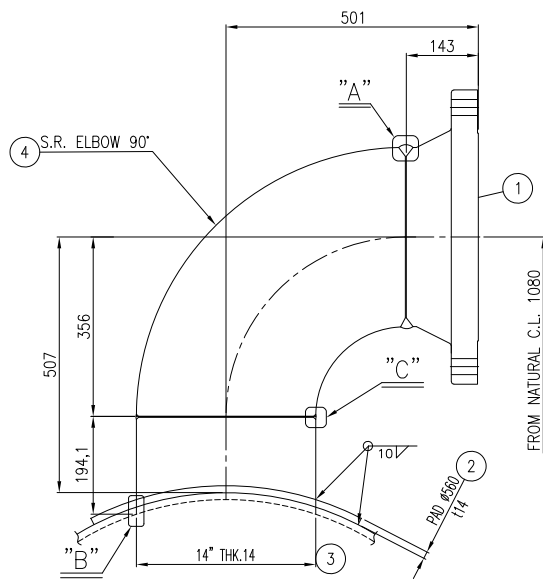
REV.	DATE	Purpose of Issue	Prepared	Checked	Approved
------	------	------------------	----------	---------	----------

Gachsaran Polymer Industries Company
HDPE Plant
 CONTRACT NO.: GPI-CON-99-008

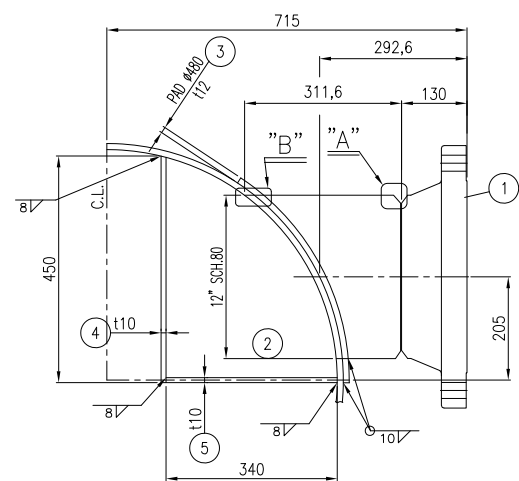
PO No.: GPIC-PT-MA-PO-000-3029 SCALE: 1:1
DRAWING TITLE:

EVAPORATOR (CHILLER) DRAWING (E-6101)
(SADDLE DETAIL)

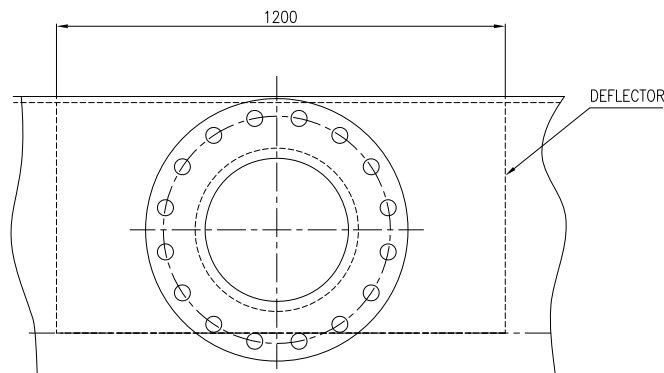
DRAWING NO.	REV.	SHEET NO.	SIZE
VD-GPIC-MA-3029-3029-0089	03	5 OF 8	A3



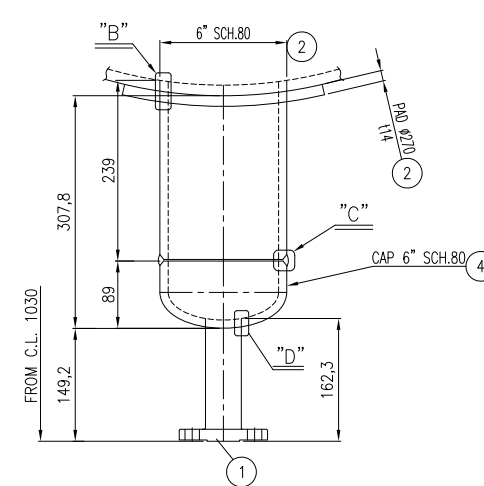
DETAIL OF N3 N4 14" 14"



DETAIL OF N2 12"



VIEW "E" N2 12"



DETAIL OF N13 S11 6" 3/4"

NOTE
 1. UNLESS OTHERWISE NOTED ALL DIMENSIONS ARE IN MILLIMETERS.
 2. FOR THE TEST VENT HOLES #3 WILL BE OBTURED BY WELDING.
 3. GASKET MATERIAL FOR ASME B16.20: SPIRAL WOUND (14.5)
 -FILLER: GRAPHITE
 -INNER RING: 304 S.S.
 -HOOP: 304 S.S.
 -OUTER RING: 304 S.S.

* FOR ONE SET

NOZZLE PART NO.	PART NAME	MATERIAL	REGULAR SPARE	QUANTITY	SPECIFICATION	REMARK
N13	CAP	SA420-WPL6	1	1	6" SCH. 80	
S11	REIN. PAD	SA516-70N	1	1	114 x #270	
	NOZZLE NECK	SA333-6	1	1	6" SCH.80 x L239	
	FLANGE (THK.14.25)	SA350-LF2 CL.1N	1	1	3/4" ASME 300# WNLR	
N5	NOZZLE NECK	SA333-6	1	1	2" SCH. 160 x L1335	
	FLANGE (SCH.160)	SA350-LF2 CL.1N	1	1	2" ASME 300# WNLR	
	ELBOW	SA420-WPL6	1	1	2" SCH. 160, LR	
N11	NOZZLE NECK	SA333-6	1	1	2" SCH. 160 x L1406	
	FLANGE (SCH.160)	SA350-LF2 CL.1N	1	1	2" ASME 300# WNLR	
	ELBOW	SA420-WPL6	1	1	2" SCH. 160, LR	
N10	NOZZLE NECK	SA333-6	1	1	2" SCH. 160 x L1025	
	FLANGE (SCH.160)	SA350-LF2 CL.1N	1	1	2" ASME 300# WNLR	
	ELBOW	SA420-WPL6	1	1	1 1/2" SCH. 160, LR	
N15	NOZZLE NECK	SA333-6	1	1	1 1/2" SCH. 160 x L1585	
	FLANGE (SCH.160)	SA350-LF2 CL.1N	1	1	1 1/2" ASME 300# WNLR	
	REIN. PAD	SA516-70N	1	1	112 x #190	
N14	NOZZLE NECK	SA333-6	1	1	3" SCH.160 x L125.7	
	FLANGE (SCH.160)	SA350-LF2 CL.1N	1	1	3" ASME 300# WNLR	
	REIN. PAD	SA516-70N	4	4	112 x #270	
B1E-H	NOZZLE NECK	SA333-6	4	4	6" SCH.80 x L110.5	
	FLANGE (SCH.80)	SA350-LF2 CL.1N	4	4	6" ASME 300# WNLR	
	REIN. PAD	SA516-70N	4	4	114 x #270	
B1A-D	NOZZLE NECK	SA333-6	4	4	6" SCH.80 x L111.1	
	FLANGE (SCH.80)	SA350-LF2 CL.1N	4	4	6" ASME 300# WNLR	
	ELBOW	SA420-WPL6	4	4	6" SCH. 80, S.R	
	REIN. PAD	SA516-70N	4	4	114 x #270	
N1A-D	NOZZLE NECK	SA333-6	4	4	6" SCH.80 x L95.3	
	FLANGE (SCH.80)	SA350-LF2 CL.1N	4	4	6" ASME 300# WNLR	
	DEFLECTOR	SA516-70N	1	1	110 x 340 x 1200	
	DEFLECTOR	SA516-70N	1	1	110 x 450 x 1200	
N2	NOZZLE NECK	SA333-6	1	1	112 x #480	
	NOZZLE NECK	SA333-6	1	1	12" SCH.80 x L311.6	
	FLANGE (SCH.80)	SA350-LF2 CL.1N	1	1	12" ASME 300# WNLR	
	ELBOW	SA420-WPL6	2	2	14" THK.14, S.R	
N4	REIN. PAD	SA516-70N	2	2	114 x #560	
N3	NOZZLE NECK	SA516-70N	2	2	14" THK.14 x L194.1	
	FLANGE (THK.14)	SA350-LF2 CL.1N	2	2	14" ASME 300# WNLR	

BILL OF MATERIAL

Code: No Comment/ Approval
 (Applicable Only for "For Review" and "For Approval"
 (Indicating the approval and the amount
 the released for Manufacturing)
 No Comment/ Approval with Note(s)
 Vendor/Sub-Contractor shall correct, revise and
 resubmit the document, the amount is released
 for Manufacturing if changes incorporated.
 Comment(s)
 Vendor/Sub-Contractor shall correct, revise and resubmit the
 document by the date specified. The amount will be released
 under the Status of "To Be Released", if correct
 quantity shall be requested before starting
 the Manufacturing Process.
 Not Approved (Rejected)
 Vendor/Sub-Contractor shall re-work/re-design/re-manufacture
 the product to correct the defects and shall
 resubmit the document for the Manufacturing Process
 with the necessary approval from the Vendor/
 Sub-Contractor and the Vendor/
 Sub-Contractor shall correct, revise and resubmit the
 document by the date specified. The amount will be released
 under the Status of "To Be Released", if correct
 quantity shall be requested before starting
 the Manufacturing Process.
 No Code
 (Only for "For Information" documents and "For Bill (BOM)"
 (Only for the use of manufacturing and procurement
 control in the Vendor/Sub-Contractor's responsibility.
 The amount shall be released only if necessary.
 Vendor of any liability, obligation and responsibility will be
 the Vendor and the Vendor's responsibility in writing.
 DATE: _____
 EDED: _____
 Signature: _____

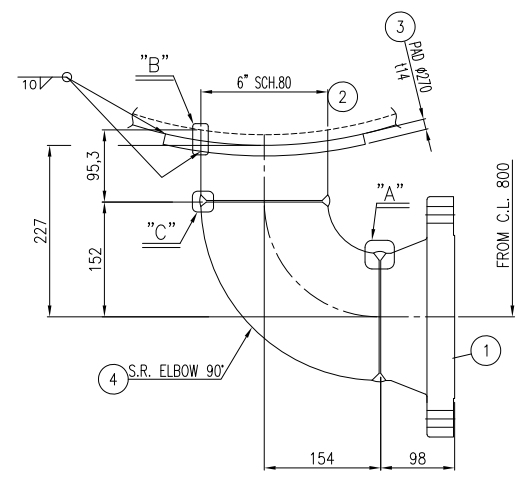
REV.	DATE	Purpose of Issue	Prepared	Checked	Approved
03	18.Nov.25	IFR	DSH	F.T	A.M
02	25.Oct.25	IFR	DSH	F.T	A.M
01	07.Oct.25	IFR	DSH	F.T	A.M
00	26.Aug.25	IFR	DSH	F.T	A.M

CV: _____
 ST: _____
 GPIC: _____
 Signature: _____

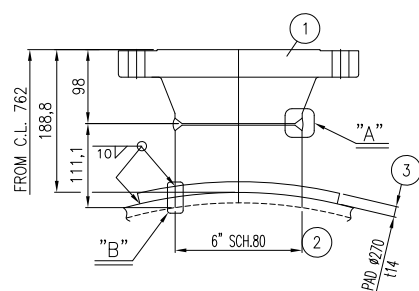
PO No.: GPIC-PT-MA-PO-000-3029
 SCALE: 1:1

EVAPORATOR (CHILLER) DRAWING (E-6101)
 (NOZZLE DETAIL)

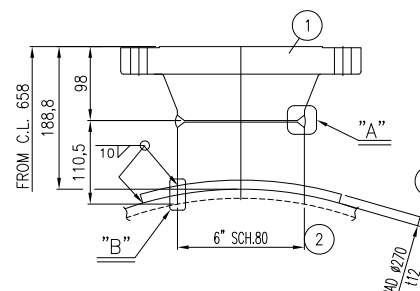
DRAWING NO. VD-GPIC-MA-3029-3029-0089
 REV. SHEET NO. SIZE
 03 6 OF 8 A3



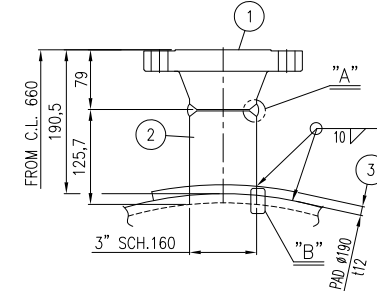
DETAIL OF N1A-D 6"



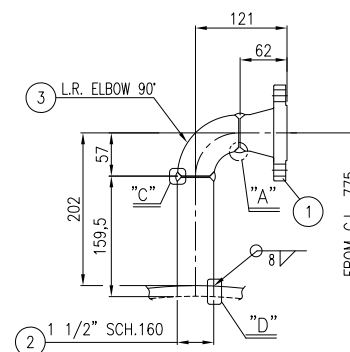
DETAIL OF B1A-D 6"



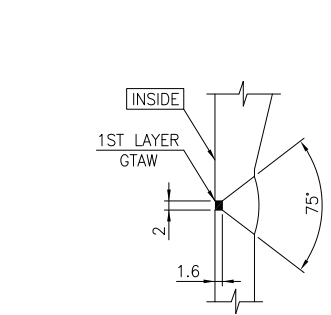
DETAIL OF B1E-H 6"



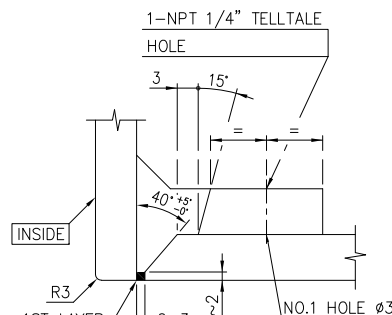
DETAIL OF N14 3"



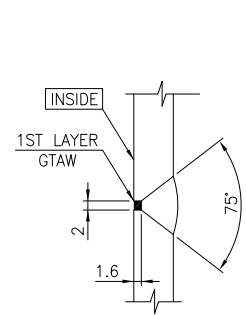
DETAIL OF N15 1 1/2"



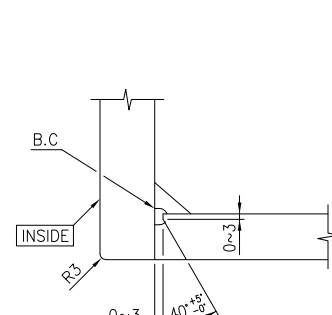
DETAIL "A"



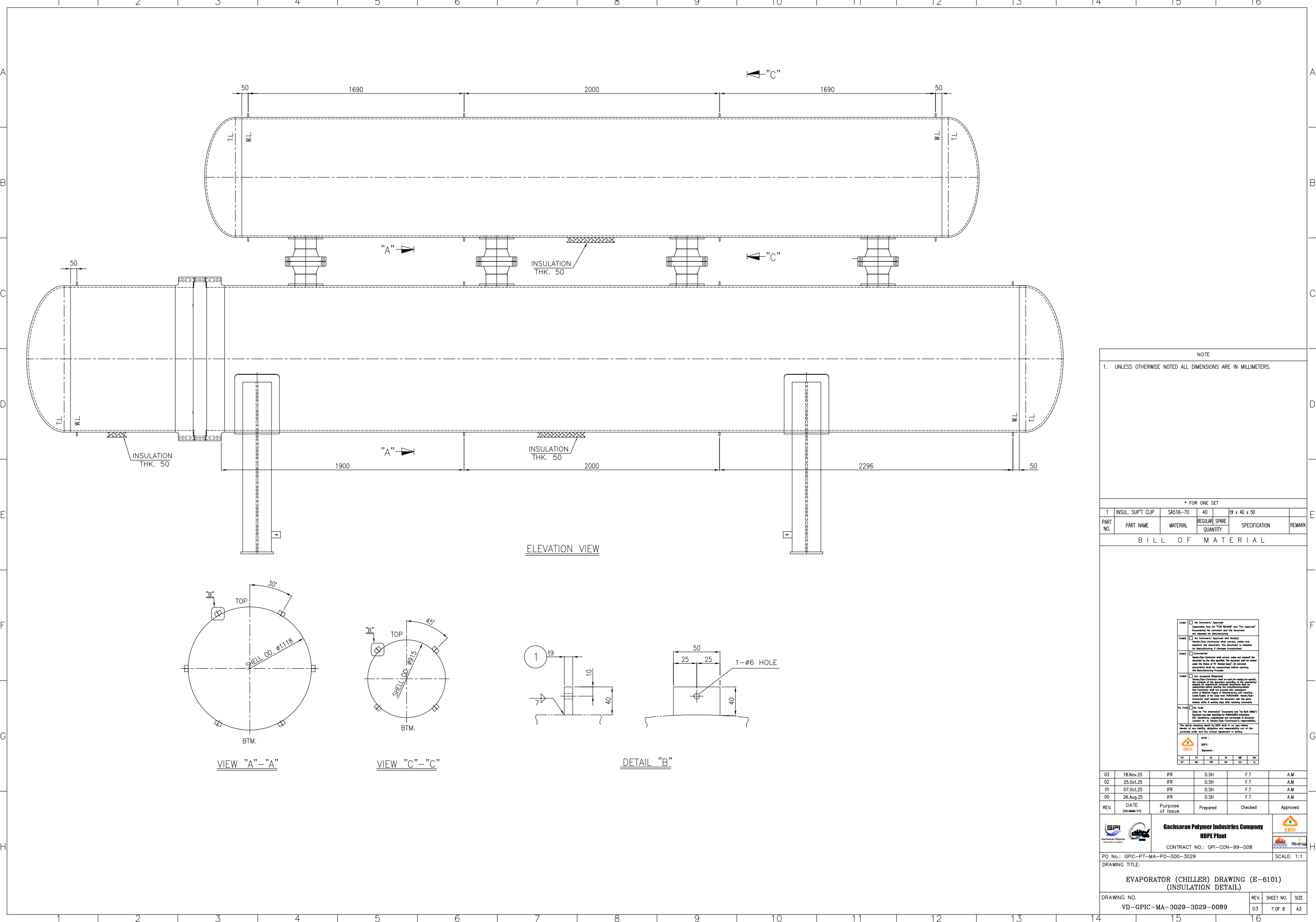
DETAIL "B"



DETAIL "C"



DETAIL "D"



ELEVATION VIEW

VIEW "A" - "A"

VIEW "C" - "C"

DETAIL "B"

NOTE
 1. UNLESS OTHERWISE NOTED ALL DIMENSIONS ARE IN MILLIMETERS.

* FOR ONE SET

PART NO.	PART NAME	MATERIAL	QUANTITY	SPECIFICATION	REMARK
1	INSUL SUPT CLIP	SA516-70	40	19 x 40 x 50	
			REGULAR SPARE		

BILL OF MATERIAL

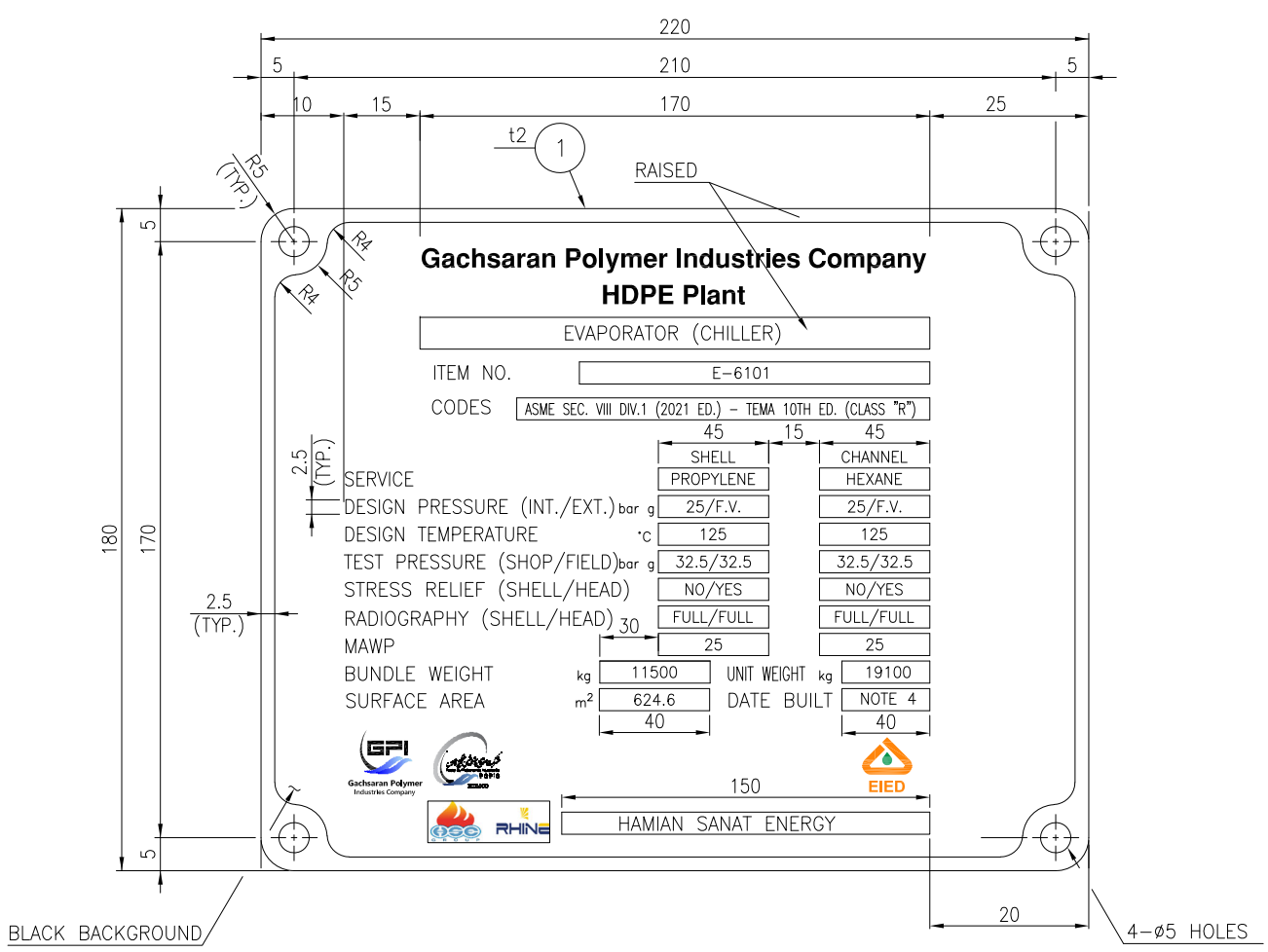
REV.	DATE	Purpose of Issue	Prepared	Checked	Approved
03	18.Nov.25	IFR	DSH	F.T	A.M
02	25.Oct.25	IFR	DSH	F.T	A.M
01	07.Oct.25	IFR	DSH	F.T	A.M
00	26.Aug.25	IFR	DSH	F.T	A.M

CONTRACT NO.: GPI-CON-99-008

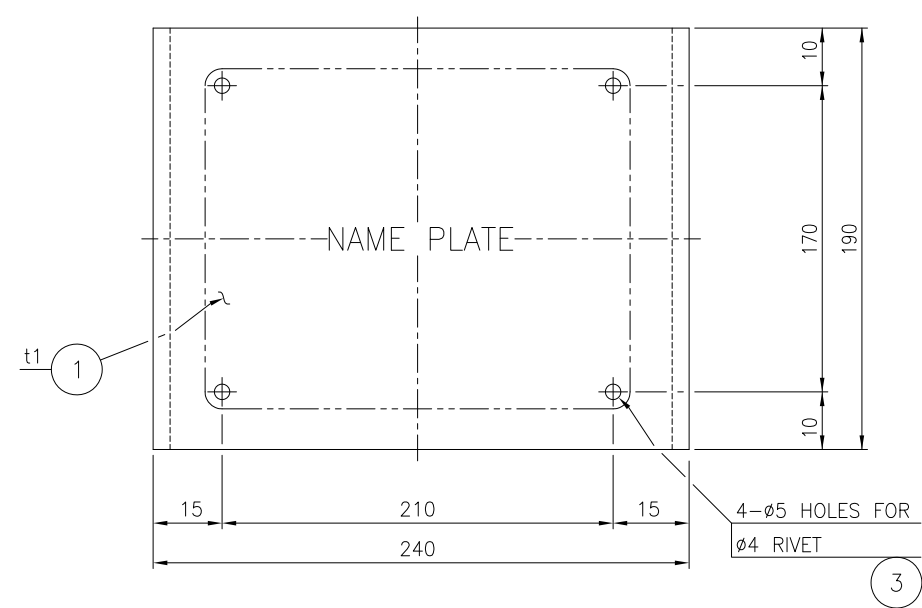
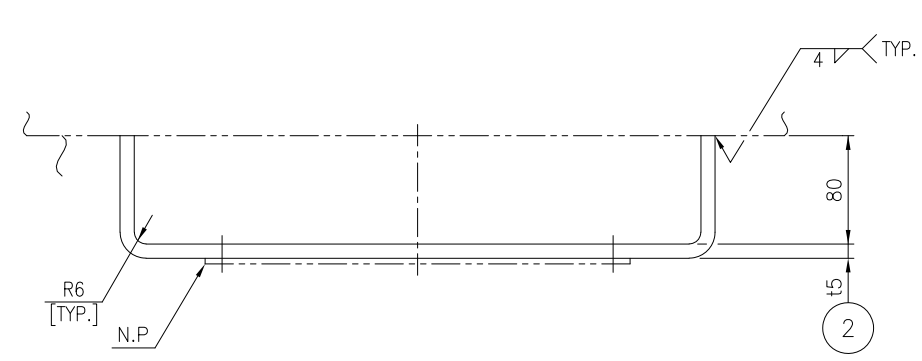
PO No.: GPI-PT-MA-PO-000-3029 SCALE: 1:1

DRAWING TITLE:
 EVAPORATOR (CHILLER) DRAWING (E-6101)
 (INSULATION DETAIL)

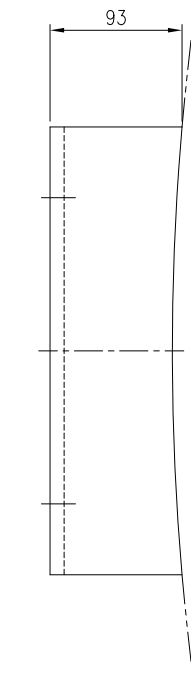
DRAWING NO.	REV.	SHEET NO.	SIZE
VD-GPIC-MA-3029-3029-0089	03	7 OF 8	A3



NAME PLATE



NAME PLATE BRACKET



- NOTE
- UNLESS OTHERWISE NOTED ALL DIMENSIONS ARE IN MILLIMETERS.
 - ALL LETTERS, BLOCKS, AS WELL AS EDGES, SHALL HAVE RAISED POLISHED FACE-RELIEF 0.5MM APPROX.
 - LETTERS TO BE GOTHIC TYPE
 - YEAR BUILT AND DATE OF TEST STAMPED AT SHOP AFTER HYDROSTATIC TEST COMPLETION.

* FOR ONE SET

3	RIVET	304 S.S	4	Ø4	
2	NAME PLATE BRACKET	SA516-70N	2		15 x 450 x 190
1	NAME PLATE	304 S.S	1		t1 x 180 x 220

BILL OF MATERIAL

PART NO.	PART NAME	MATERIAL	REGULAR QUANTITY	SPARE QUANTITY	SPECIFICATION	REMARK
03	18.Nov.25	IFR	DSH	F.T	A.M	
02	25.Oct.25	IFR	DSH	F.T	A.M	
01	07.Oct.25	IFR	DSH	F.T	A.M	
00	26.Aug.25	IFR	DSH	F.T	A.M	

DATE: _____

Signature: _____

CV	PI	EL	SI	ME	SA
ST	BY	PR	SA	CHK	TL

03 18.Nov.25 IFR DSH F.T A.M
 02 25.Oct.25 IFR DSH F.T A.M
 01 07.Oct.25 IFR DSH F.T A.M
 00 26.Aug.25 IFR DSH F.T A.M

REV. DATE Purpose of Issue Prepared Checked Approved

Logo: GPI, EIED, HAMIAN SANAT ENERGY

Gachsaran Polymer Industries Company
HDPE Plant
 CONTRACT NO.: GPI-CON-99-008

PO No.: GPIC-PT-MA-PO-000-3029 SCALE: 1:1

DRAWING TITLE:
EVAPORATOR (CHILLER) DRAWING (E-6101)
(NAME PLATE DETAIL)

DRAWING NO.	REV.	SHEET NO.	SIZE
VD-GPIC-MA-3029-3029-0089	03	8 OF 8	A3