

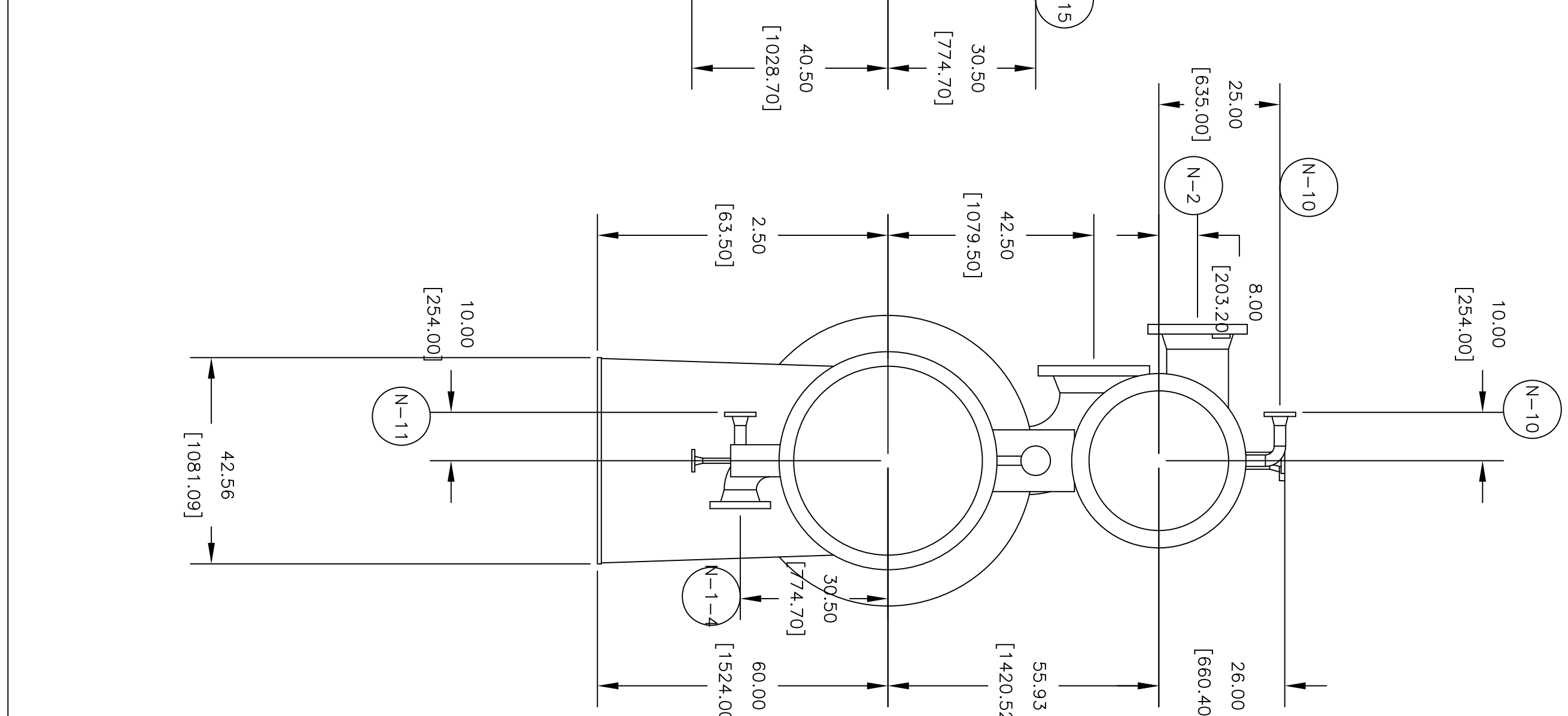
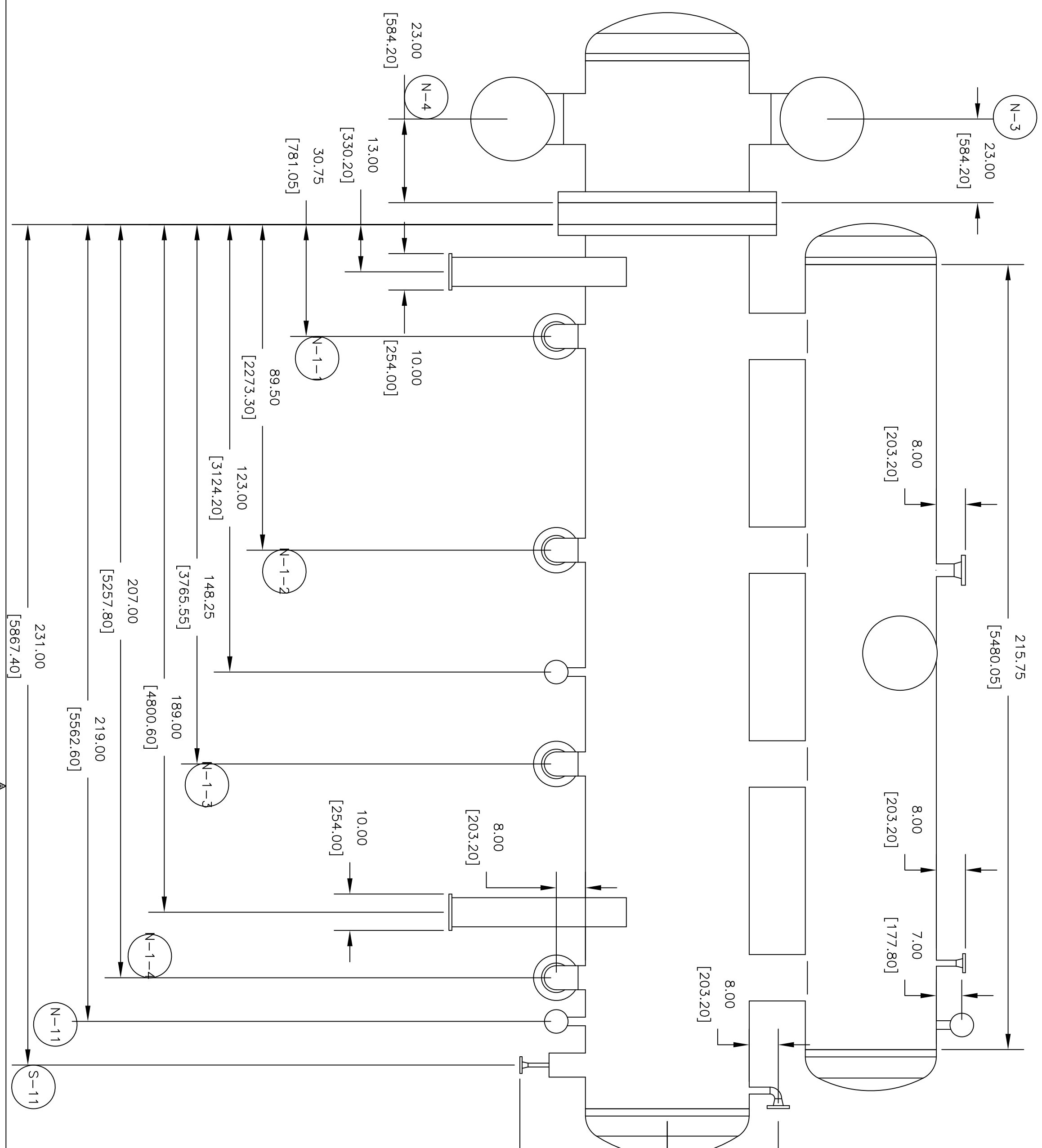
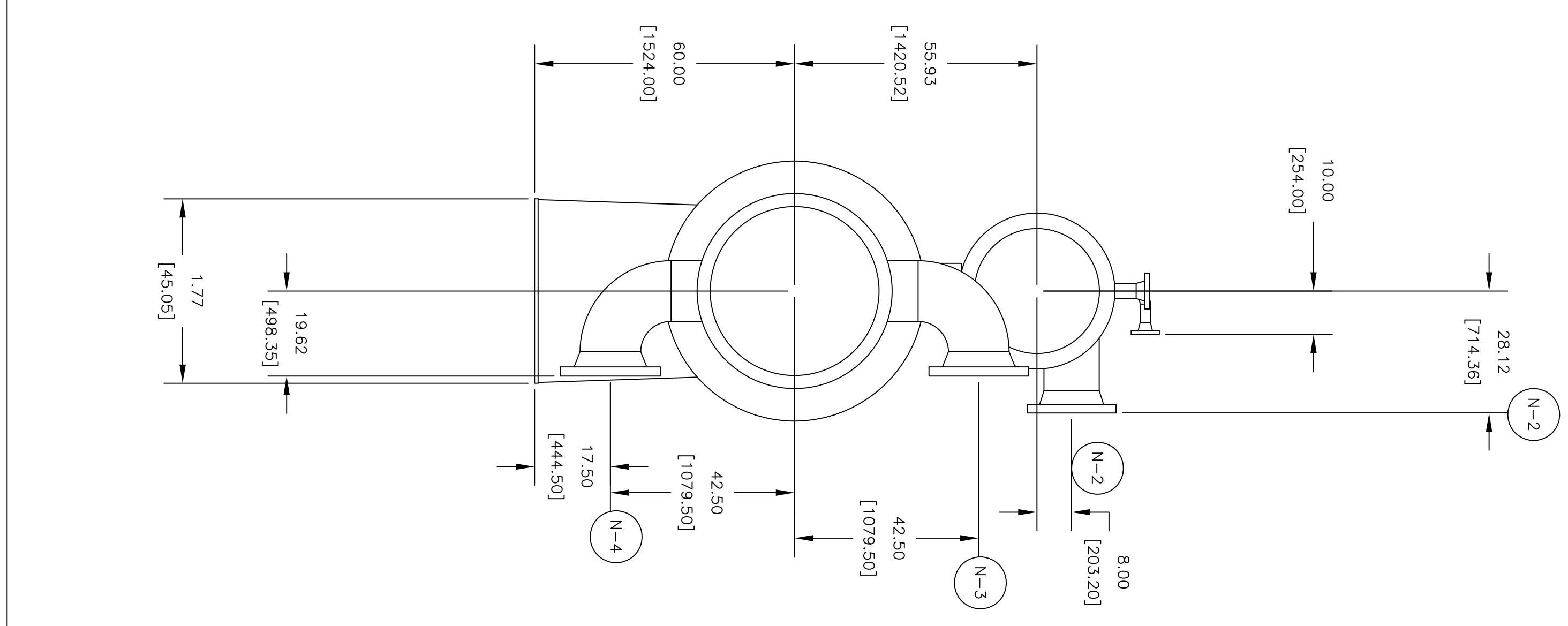
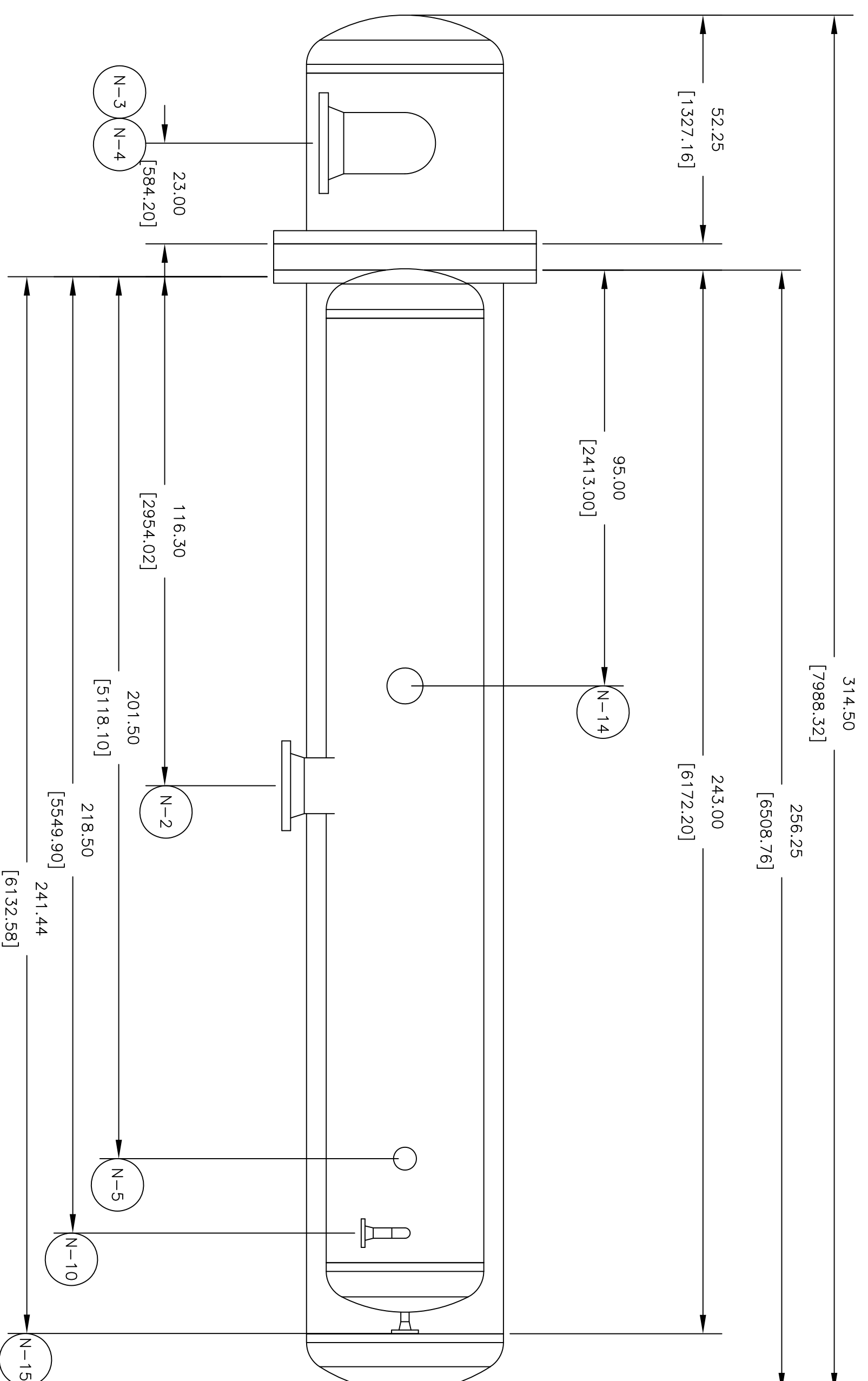


CONNECTION LIST

TAG	QTY	DESCRIPTION	SIZE
N-1-1/4	4	PROPYLENE INLET	6"-300# ANSI RF
N-2	1	PROPYLENE OUTLET	12"-300# ANSI RF
N-3	1	PROCESS INLET	14"-300# ANSI RF
N-4	1	PROCESS INLET	14"-300# ANSI RF
N-5	1	VENT - PROPYLENE	2"-300# ANSI RF
N-6	1	DRAIN - PROPYLENE	2"-300# ANSI RF
N-10	1	LEVEL TRANSMITTER	2"-300# ANSI RF
N-11	1	LEVEL TRANSMITTER	2"-300# ANSI RF
N-13	1	OIL RECOVERY BOOT	6"-PIPE
N-14	1	RELIEF VALVE	3"-300# ANSI RF
N-15	1	SPARE/PURGE	1-1/2"-300# ANSI RF
S-11	1	OIL RECOVERY BOOT	3/4"-300# ANSI RF

NOTES:

- FOR DESIGN REQUIREMENTS, REFER TO CHILLER DATA SHEET.
- FOR MECHANICAL CALCULATION, REFER TO ASME CODE CALCULATION.
- FOR COATING REFER TO PROJECT PAINTING PROCEDURE.
- FOR MATERIAL SELECTION, REFER TO CHILLER DATA SHEET.
- ORIFICE REQUIREMENT, REFER TO CHILLER DATA SHEET.
- DIMENSIONS ARE IN INCHES AND MM IN PARENTHESIS. REFER TO CHILLER SCHEDULE DATA SHEET.
- FOR NOZZLE RATING, SCHEDULE PAID REQUIREMENTS.
- DIMENSIONAL TOLERANCES: ± 1/16 in (± 1.7 mm).
- ALLOWED ARE CONTINUOUS. SUCH WELDS ARE NOT TO BE DESTROYED FOR INSPECTION APPLICATION, REFER TO CHILLER DATA SHEET.



Code	<input type="checkbox"/> No Comment/ Approved
Code	<input type="checkbox"/> (Applicable Only for 'For Review' and 'For Approval' Documents) No comment and the document are released for manufacturing.
Code	<input type="checkbox"/> No Comment/ Approved with Hold(s)
Code	<input type="checkbox"/> Commented
Code	<input type="checkbox"/> Not Accepted (Rejected)
Code	<input type="checkbox"/> Not Accepted (Rejected) - (Specify/Describe/Justify/Reason/Specify the contents of the document according to the comments/requirements before starting the manufacturing work under the status of 'Re-Released' - All omitted documents shall be resubmitted before starting the manufacturing process)
Code	<input type="checkbox"/> No Code
Code	<input type="checkbox"/> (Only for 'For Information' Documents and 'As Built' (DWG) Documents) Document has been submitted for RIBUAS/STG Information content is in Vendor/Designer-contractor's responsibility. Vendor of any liability, obligation and responsibility out of the document shall be the responsibility of the contractor.

Signature: \_\_\_\_\_ DATE: \_\_\_\_\_

REV.	DATE	FA	Purpose of Issue	Prepared	Checked	Approved
00	12/07/25	FA				OG

Contractor: **GPI** (Gandhi Praramita Industries Company)  
**HOPE Plant**  
 CONTRACT NO.: GPI-CON-99-008

Client: **DELTA** (Industri Elektronik)  
 SCALE: 1:1

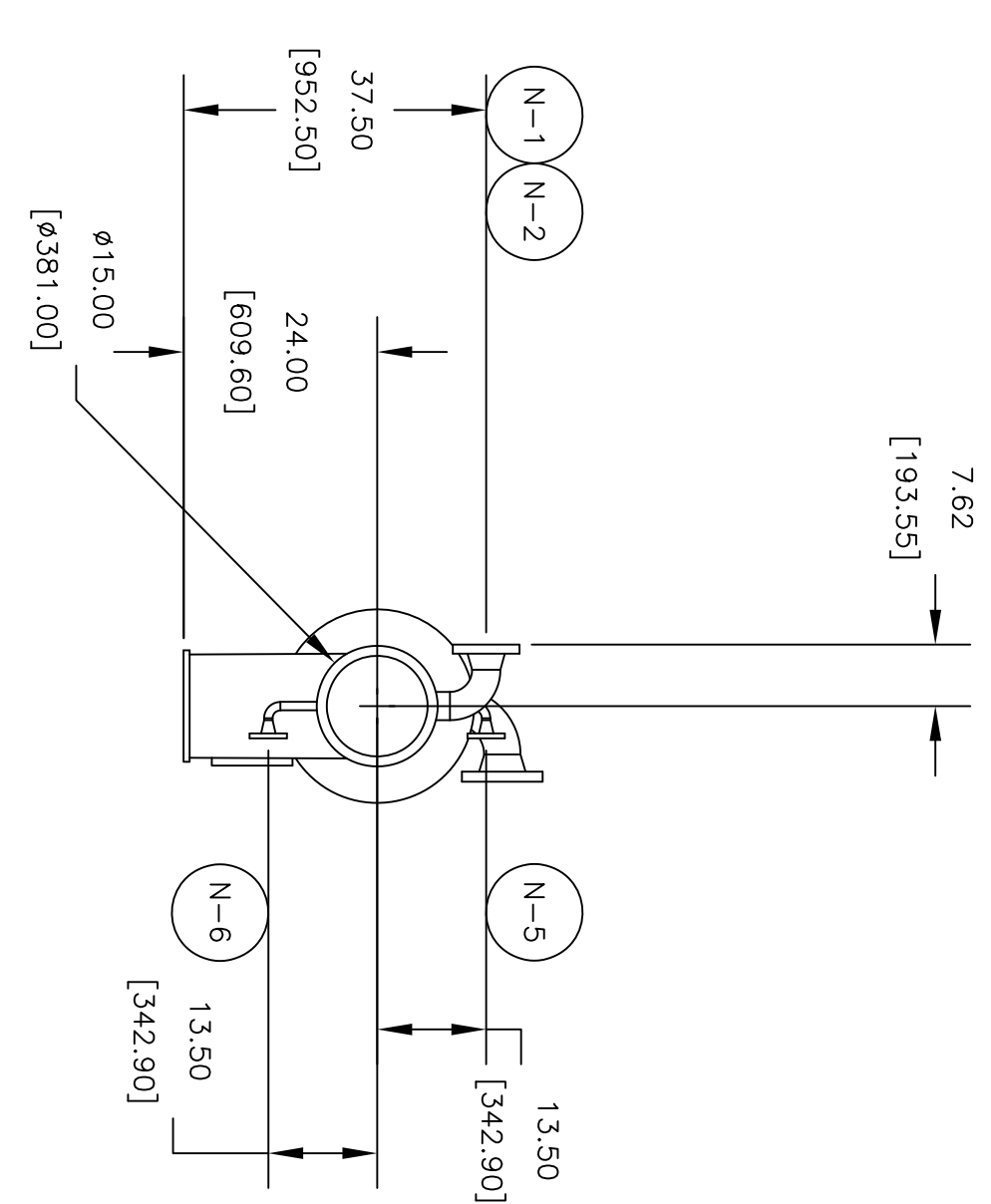
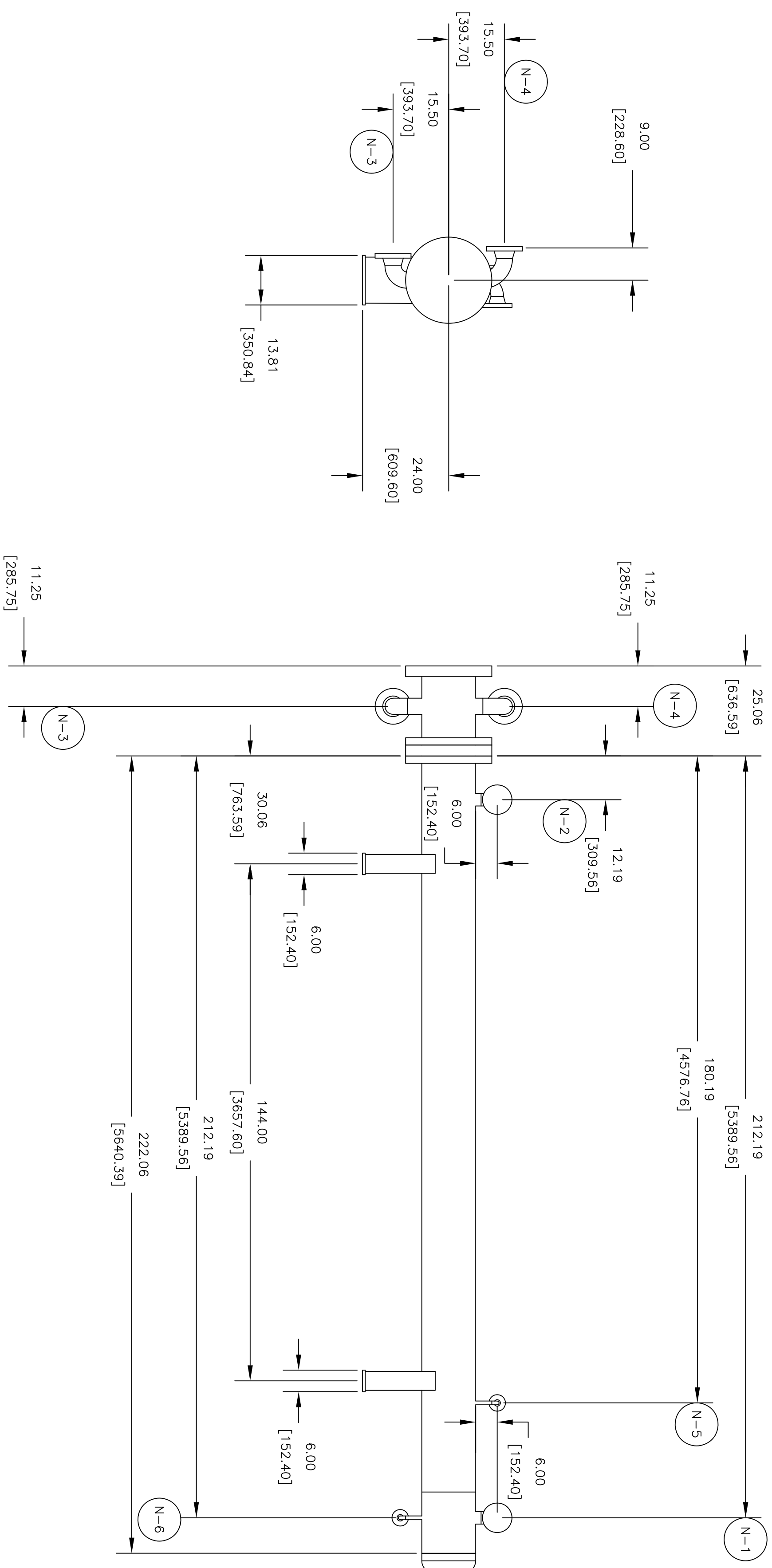
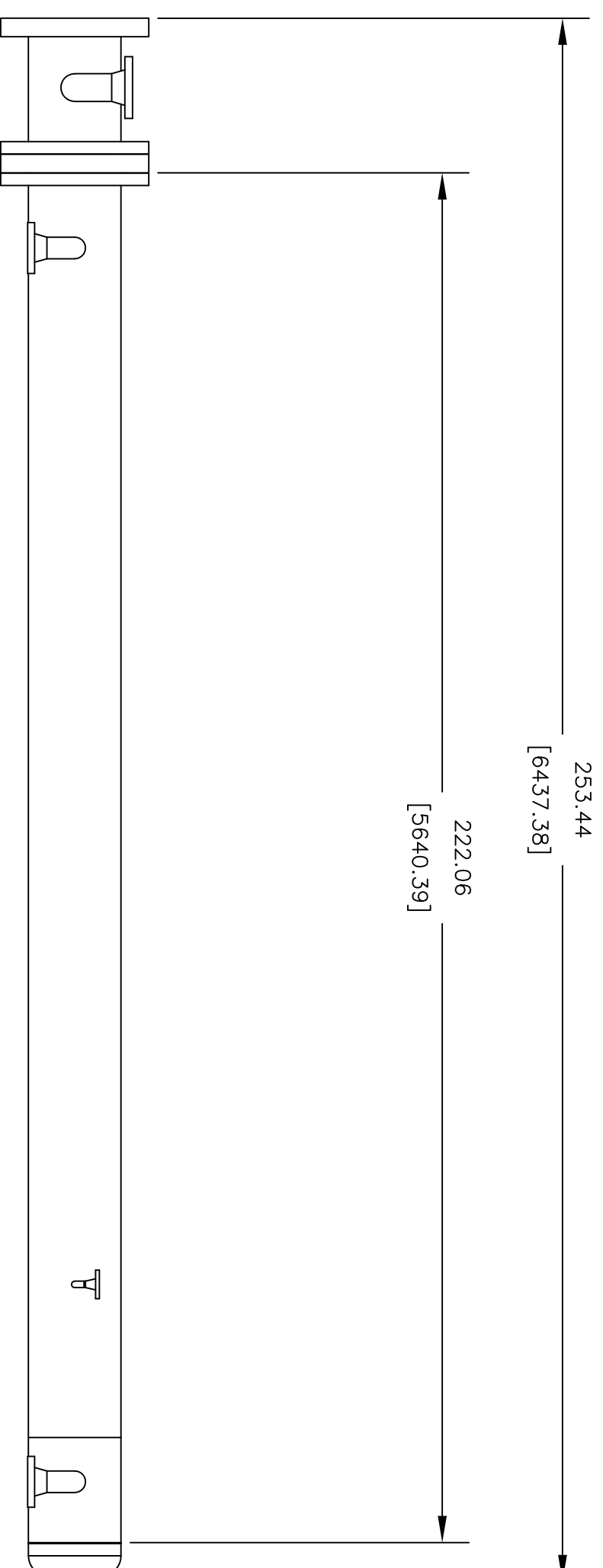
PO No.: xxxxx  
 DRAWING TITLE: **CHILLER SKELETON**

DRAWING NO.: VD-GPIC-MA-3029-002A-16

REV.	SHEET NO.	SIZE
00	1 OF 1	A1

SCALE: 1:1

TAG	QTY	DESCRIPTION	SIZE
N-1	1	OIL INLET	3"-300# ANSI RF
N-2	1	OIL OUTLET	3"-300# ANSI RF
N-3	1	COOLING WATER INLET	4"-300# ANSI RF
N-4	1	COOLING WATER INLET	4"-300# ANSI RF
N-5	1	VENT	3/4"-300# ANSI RF
N-6	1	DRAIN	3/4"-300# ANSI RF



- NOTES:
- FOR DESIGN REQUIREMENTS, REFER TO OIL COOLER DATA SHEET.
  - FOR MECHANICAL CALCULATION, REFER TO ASME CODE CALCULATION. REFER TO PROJECT PAINTING PROCEDURE.
  - FOR COATING, REFER TO PROJECT PAINTING PROCEDURE.
  - FOR MATERIAL SELECTION, REFER TO OIL COOLER DATA SHEET.
  - FOR GUSSET REQUIREMENT, REFER TO OIL COOLER DATA SHEET.
  - HEIGHTS ARE IN INCHES AND MM IN PARENTHESES.
  - FOR NOZZLE PATING, SCHEDULE PAD REQUIREMENTS, REFER TO OIL COOLER DATA SHEET.
  - DIMENSIONAL TOLERANCES: ± 1/16 in (± 1.7 mm).
  - ALLOWED ARE CONTINUOUS. STITCH WELDS ARE NOT ALLOWED.
  - FOR NON-DESTRUCTIVE INSPECTION APPLICATION, REFER TO OIL COOLER DATA SHEET.

Code1	<input type="checkbox"/> No Comment/ Approval
Code2	<input type="checkbox"/> (Applicable Only for "FOR REVIEW" and "For Approval" Documents) No comment and the document are released for Manufacturing
Code3	<input type="checkbox"/> No Comment / Approved with Note(s) are released for Manufacturing
Code4	<input type="checkbox"/> Commented for Manufacturing if changes incorporated
Code5	<input type="checkbox"/> Commented for Manufacturing and comment, review and request the manufacturing to be resolved before releasing the document under the Status of "To Be Released Issue". All corrected documents shall be reidentified before starting the Manufacturing Process
Code6	<input type="checkbox"/> Not Accepted (Rejected) re-work/ re-design/ re-identify the contents of the document according to the comments/ request of the manufacturing before releasing the document under the Status of "To Be Released Issue". All corrected documents shall be reidentified before starting the Manufacturing Process
Code7	<input type="checkbox"/> No Code
Code8	<input type="checkbox"/> No Code (Only for "For Information" Documents and "As Built DWG") Document has been submitted for PROJECT'S Information content is in Vendor/Supplier-contractor's responsibility. Vendor of any facility, addition and responsibility out of the purchase order and the initial agreement in writing

The above checking result by EIED shall in no way relieve purchaser of their responsibility and the initial agreement in writing

DATE: \_\_\_\_\_  
 DEPT: \_\_\_\_\_  
 Signature: \_\_\_\_\_

CV	SI	EL	IN	ME	MA
ST	BU	PR	SA	HV	TL

REV	DATE	Purpose of Issue	Prepared	Checked	Approved
00	12/07/25	FA	FDA	IMA	OG

CONTRACT NO.: GPH-CON-99-008

SCALE: 1:1

