



LIDCO, Pars SEE Zone, Assaluyeh,
Integrated Methanol and Ammonia
Plant 3000 MTPD MeOH / 900 MTPD NH3 PROJECT



Detail Drawings for Coolers



Document No. 17735-23A

Project No.	Vendor Doc.	P.O. No.	Department	Document Type	Serial No	Revision	Page
N278	VD	6019	ME	DWG	0024	02	Page 1 of 4

**Airpack B.V. - Air Compressor –
Integrated Methanol and Ammonia Plant
17735-COM Detail Drawings for Coolers (K020)**

REV.	DATE	DESCRIPTION	DRAWN	CHECKED	APPROVED
02	12-02-2024	Issued for Information	S.K.	J.J.	S.K.
01	13-12-2023	Issued for Information	S.K.	J.J.	S.K.

This document has been produced by Contractor for LIDCO. It is confidential and cannot be disclosed to or used by any third party for any purpose without prior written consent.

Detail Drawings for Coolers

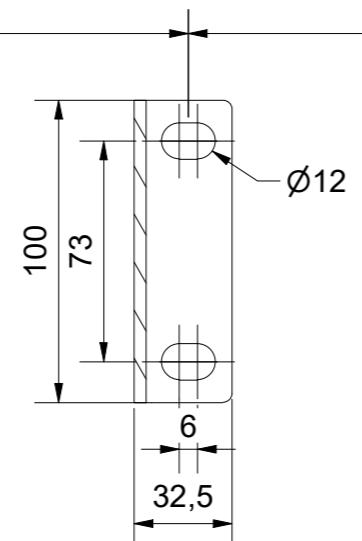
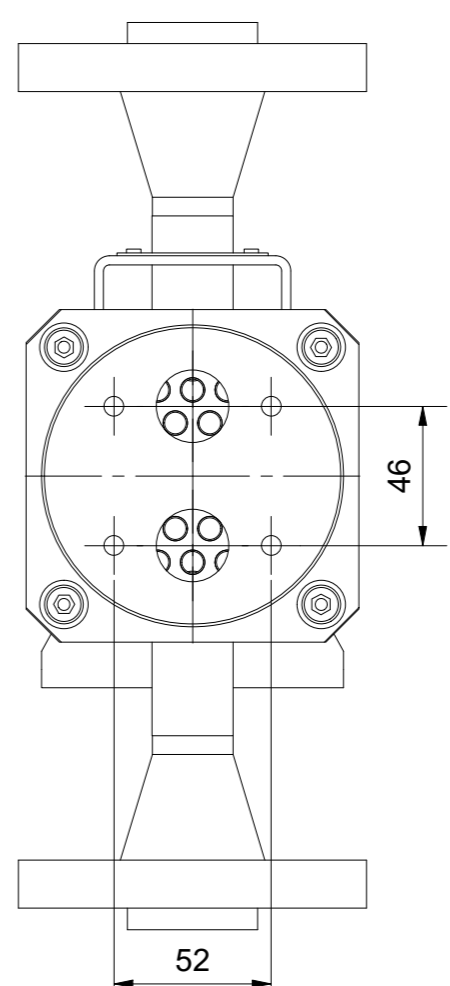
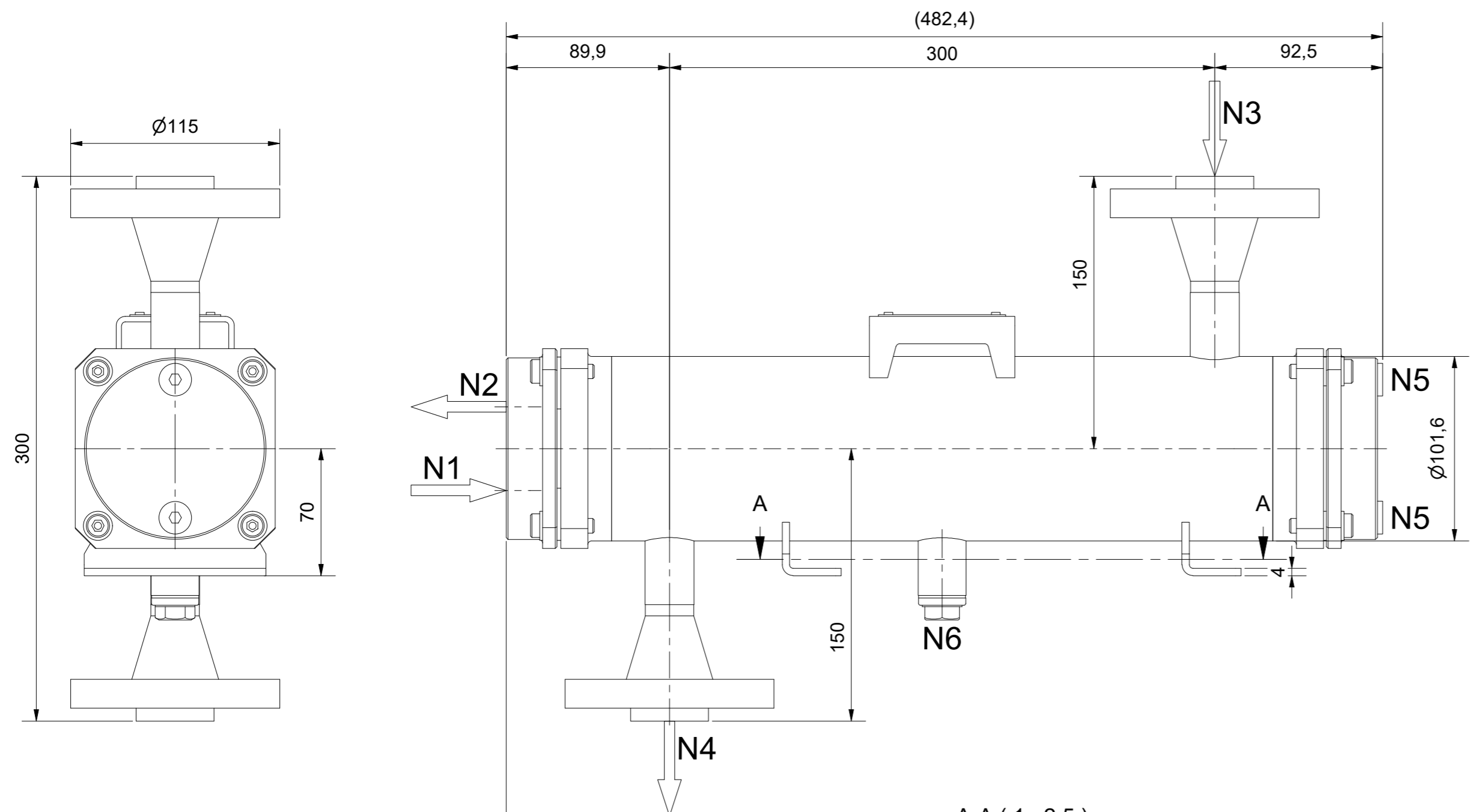
Document No. 17735-23A

Project No.	Vendor Doc.	P.O. No.	Department	Document Type	Serial No	Revision	Page
N278	VD	6019	ME	DWG	0024	02	Page 2 of 4

LIST OF REVISED PAGES

Rev. Page	01	02	03	04	05	Rev. Page	01	02	03	04	05	Rev. Page	01	02	03	04	05	Rev. Page	01	02	03	04	05
1	X	X				26						51						76					
2	X	X				27						52						77					
3	X	X				28						53						78					
4		X				29						54						79					
5						30						55						80					
6						31						56						81					
7						32						57						82					
8						33						58						83					
9						34						59						84					
10						35						60						85					
11						36						61						86					
12						37						62						87					
13						38						63						88					
14						39						64						89					
15						40						65						90					
16						41						66						91					
17						42						67						98					
18						43						68						ATTACHMENT					
19						44						69						1					
20						45						70						2					
21						46						71						3					
22						47						72						4					
23						48						73						5					
24						49						74						6					
25						50						75						7					

Nozzle Table / Stützentabelle		
No. / Nr.	Function / Funktion	Size / Größe
N1	Tubeside In	G 3/4"
N2	Tubeside Out	G 3/4"
N3	Shellside In	ASME B16.5 - 3/4" - Class 600 - WNRF
N4	Shellside Out	ASME B16.5 - 3/4" - Class 600 - WNRF
N5	Tubeside Drain/Vent	G 1/4"
N6	Shellside Drain	G 1/2"



Design Parameters Design Bedingungen		
Mech. Design Code Konstruktionsvorschrift	ASME VIII Div.1:2021	
	Tubeside Rohrseite	Shellside Mantelseite
Operating Medium Betriebsmedium	Water	Air
Fluidgroup Fluidgruppe	2	2
Volume (V) Volumen	0,8L	1,7L
Design Pressure (MAWP) Max. zul. Druck (MAWP) / (PS)	-1/10bar(g)	-1/39bar(g)
Test Pressure (PT) Prüfdruck	14,3bar(g)	64,35bar(g)
Design Temperature (AT) Zul. Betriebstemperatur (AT) / (TS)	-10/100°C	-10/175°C
Corrosion Allowance Korrosionszuschlag	0mm	0mm

Job Information Auftragsinformationen		General Information Allgemeine Informationen	
Corresponding Documents Zugehörige Dokumente		Nondestructive Testing Zerstörungsfreie Prüfungen	acc. to Code
Surface Treatment Oberflächenbehandlung		Empty Weight Leergewicht	ca.15kg
Parts List Stückliste	Sheet 2		

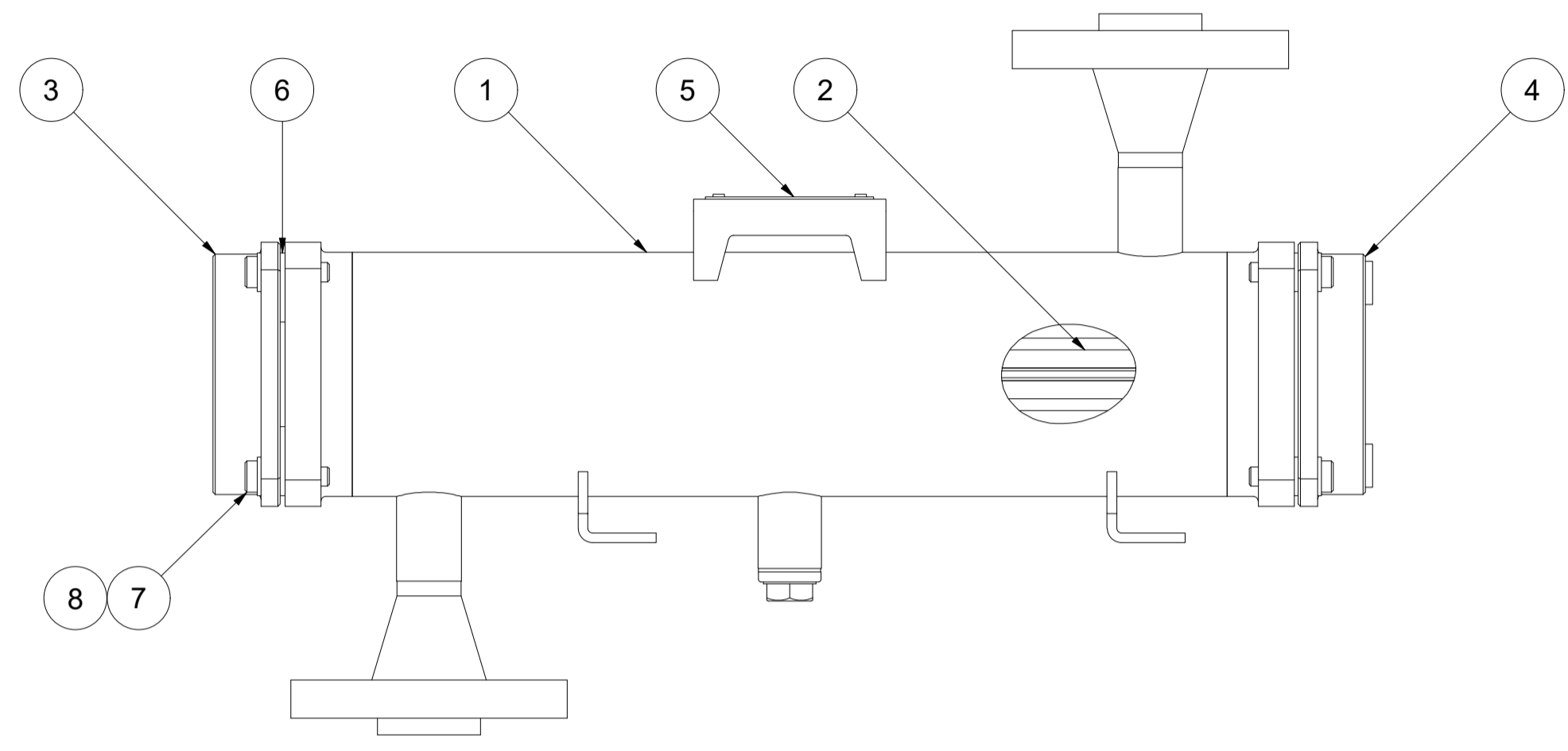
Revisions Revisionen				
Rev.	Rev.	Reason for Issue Grund der Ausgabe	Date Datum	Drawn Gezeichnet
R02		Issued for review	19.01.2024	
				Checked Geprüft
				Approved Freigegeben

Type		Built	2024
KD-Nr.		Emptyweight	15kg
No. Serie	See Table		
PS	Tubeside	Shellside	
V	-1/10	-1/39	bar
TS	0,8	1,7	l
PT	-10/100	-10/175	°C
Fluidgroup	14,3	64,35	bar
	2	2	

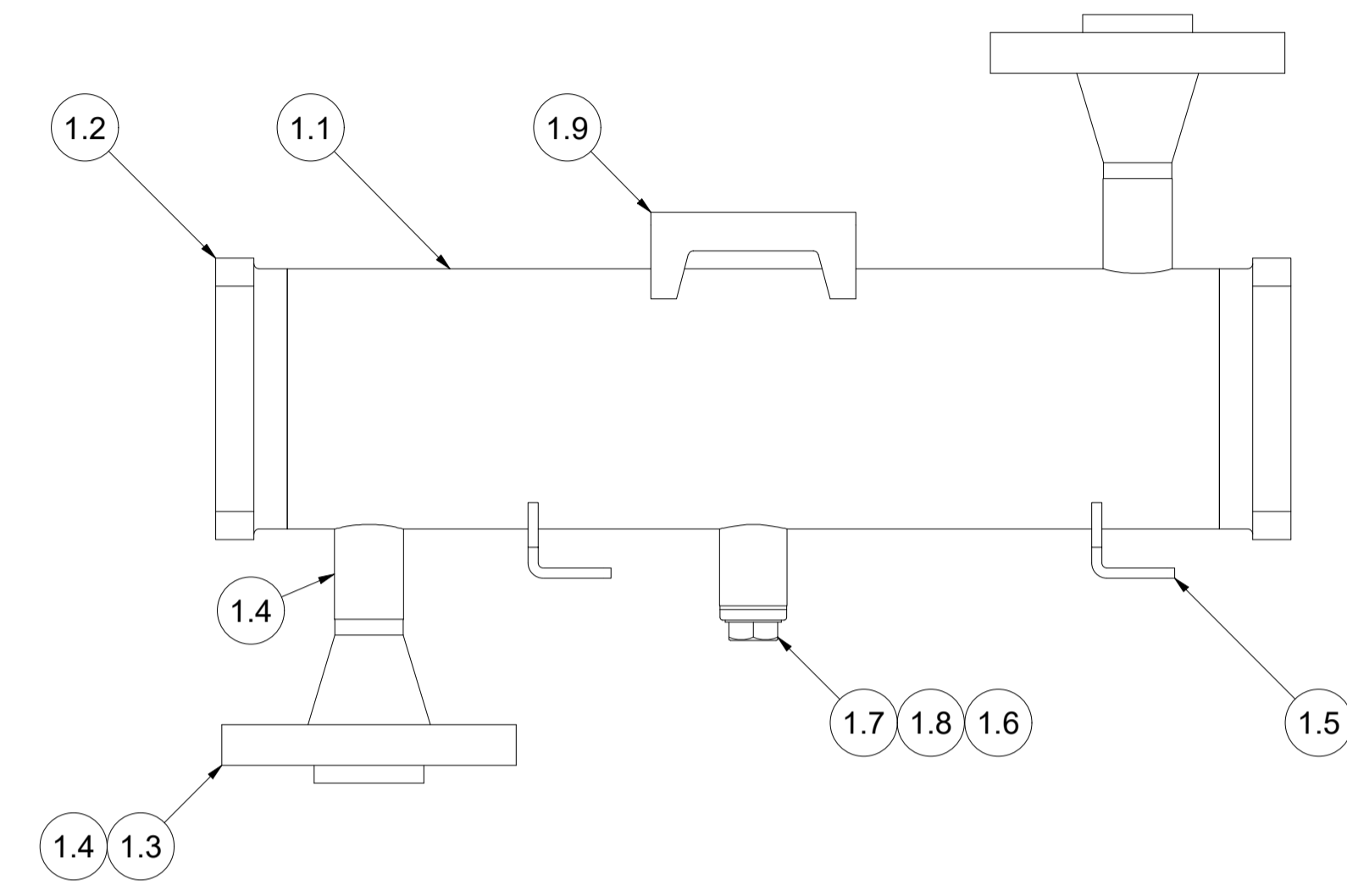
Item	Item No.	Serial No.
Intercooler	320-KE-020-001	TBD
Aftercooler	320-KE-020-002	TBD

Description Beschreibung		Intercooler / Aircooler		
Drawing No. Zeichnungsnummer		[Redacted]		
Tolerances in acc. to EN ISO 13920-DH and ASME VIII Div. 1 UW-33, UW-35, UG-79, UG-80, UG-81				
Scale Maßstab	1 : 2,5	Format	A2	Page Blatt
				1

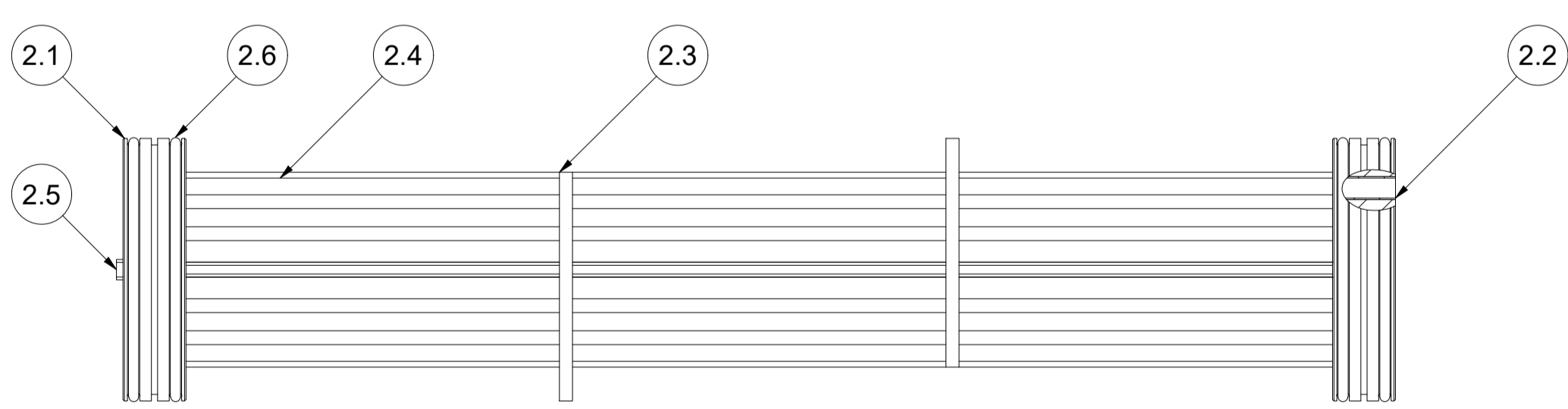
Pos.	Qty. / Menge	Description	Bezeichnung	Material / Werkstoff	Material Standard / Werkstoff Norm	Cert. / Zgn.	Standard / Norm	Dimensions / Abmessungen	Notes / Bemerkungen
1	1	Shell Assembly	Mantel Baugruppe	-	-	-	-	-	-
2	1	Bundle Assembly	Bündel Baugruppe	-	-	-	-	-	-
3	1	Inlet/Outlet Bonnet	Einlass-/Auslasskammer	1.4301/304	-	3.1	-	-	-
4	1	Return Bonnet	Umlenkammer	1.4301/304	-	3.1	-	-	-
5	1	Nameplate	Typenschild	Aluminium	-	-	-	-	-
6	4	Fixing Plate	Fixierblech	1.4301/304	-	-	-	-	-
7	8	Bolt	Schraube	A2-70	-	3.1	DIN 6912	M8 x 30	-
8	12	Washer	Scheibe	A2-70	-	-	DIN 126	D9	-



Pos.	Qty. / Menge	Description	Bezeichnung	Material / Werkstoff	Material Standard / Werkstoff Norm	Cert. / Zgn.	Standard / Norm	Dimensions / Abmessungen	Notes / Bemerkungen
1.1	1	Shell	Mantel	1.4401/316	-	3.1	-	-	-
1.2	2	Flanging	Flanschring	1.4401/316	-	3.1	-	-	-
1.3	2	Welding Neck Flange	Vorschweißflansch	1.4401/316	-	3.1	-	-	-
1.4	2	Nozzle Pipe	Stutzenrohr	1.4401/316	-	3.1	-	-	-
1.5	2	Foot	Fuß	Stainless Steel	-	-	-	-	-
1.6	1	Socket	Muffe	A2	-	3.1	-	-	-
1.7	1	Plug	Stopfen	A2	-	-	-	-	-
1.8	1	Sealing Ring	Dichtring	Aluminium	-	-	-	-	-
1.9	1	Nameplate Holder	Typenschildhalter	Stainless Steel	-	-	-	-	-



Pos.	Qty. / Menge	Description	Bezeichnung	Material / Werkstoff	Material Standard / Werkstoff Norm	Cert. / Zgn.	Standard / Norm	Dimensions / Abmessungen	Notes / Bemerkungen
2.1	2	Tubesheet	Rohrplatte	1.4404/316L	-	3.1	-	-	-
2.2	36	Tube	Rohr	1.4404/316L	-	3.1	-	-	-
2.3	2	Baffle	Umlenkblech	Aluminium	-	-	-	-	-
2.4	1	Fin	Rippe	Aluminium	-	-	-	-	-
2.5	1	Divider Gasket	Trennsteg	PE-1000	-	-	-	-	-
2.6	4	O-Ring	O-Ring	Viton	-	-	-	-	-



Revisions				
Rev.	Reason for Issue	Date	Drawn	Checked/Approved
R02	Issued for review	19.01.2024		
Rev.	Grund der Ausgabe	Datum	Gezeichnet	Geprüft / Freigegeben
Description		Intercooler / Aircooler		
Drawing No.		[Redacted]		
Tolerances in acc. to EN ISO 13920-DH and ASME VIII Div. 1 UW-33, UW-35, UG-79, UG-80, UG-81				
Scale		1 : 2.5	Format	A1
Matlab			Page	2