



LIDCO, Pars SEE Zone, Assaluyeh,  
Integrated Methanol and Ammonia  
Plant 3000 MTPD MeOH / 900 MTPD NH3 PROJECT



Piping & Instrument Diagram

Document No. 17735-03

Page

Project No.	Vendor Doc.	P.O. No.	Department	Document Type	Serial No	Revision	Page
N278	VD	6019	PR	PID	0002	01	Page 1 of 4

REV.	DATE	DESCRIPTION	DRAWN	CHECKED	APPROVED
01	14-09-2023	Issued for Approval	S.K.	J.J.	S.K.

This document has been produced by Contractor for LIDCO. It is confidential and cannot be disclosed to or used by any third party for any purpose without prior written consent.

Piping & Instrument Diagram

Document No. 17735-03

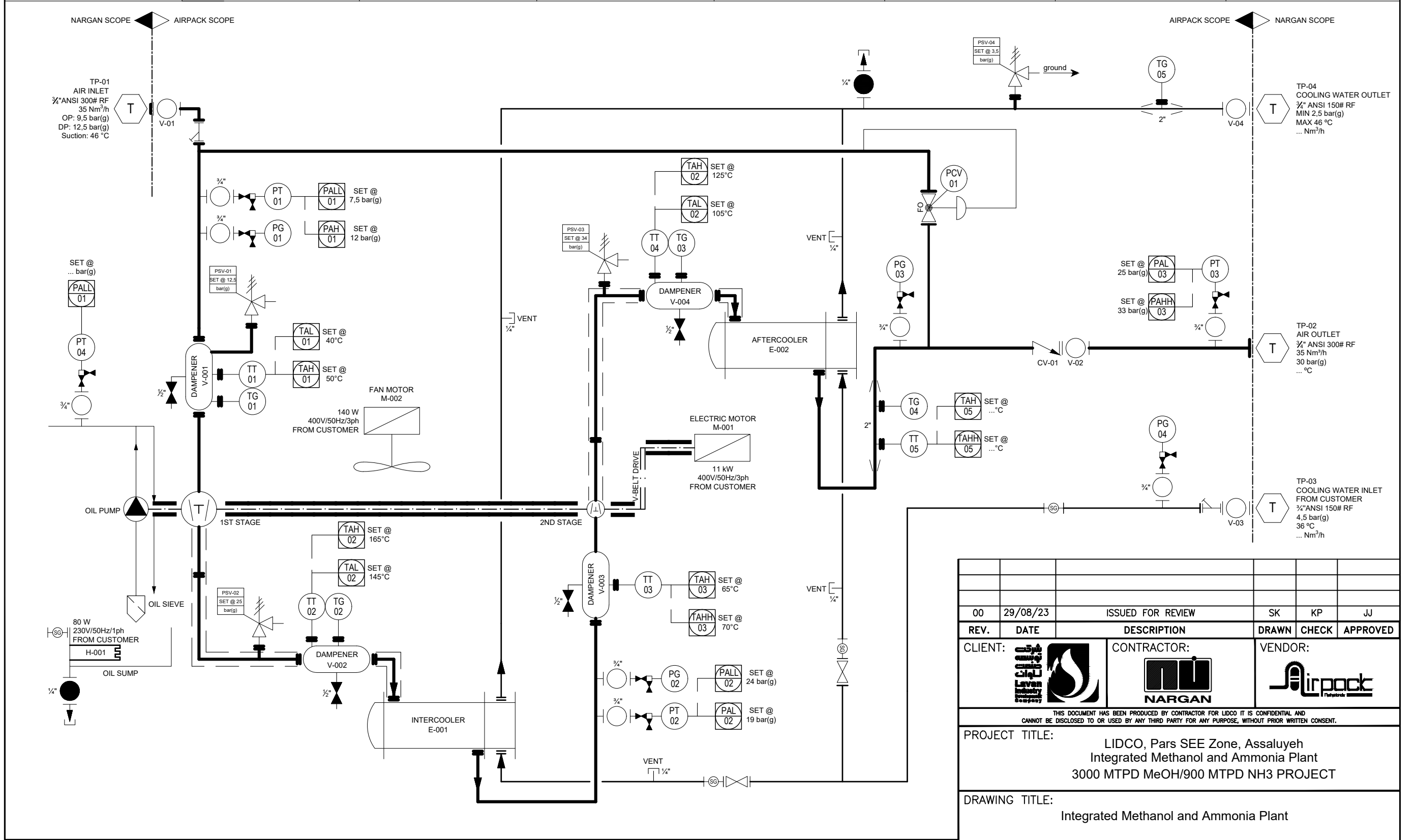
Page

Project No.	Vendor Doc.	P.O. No.	Department	Document Type	Serial No	Revision	Page
N278	VD	6019	PR	PID	0002	01	Page 2 of 4

LIST OF REVISED PAGES

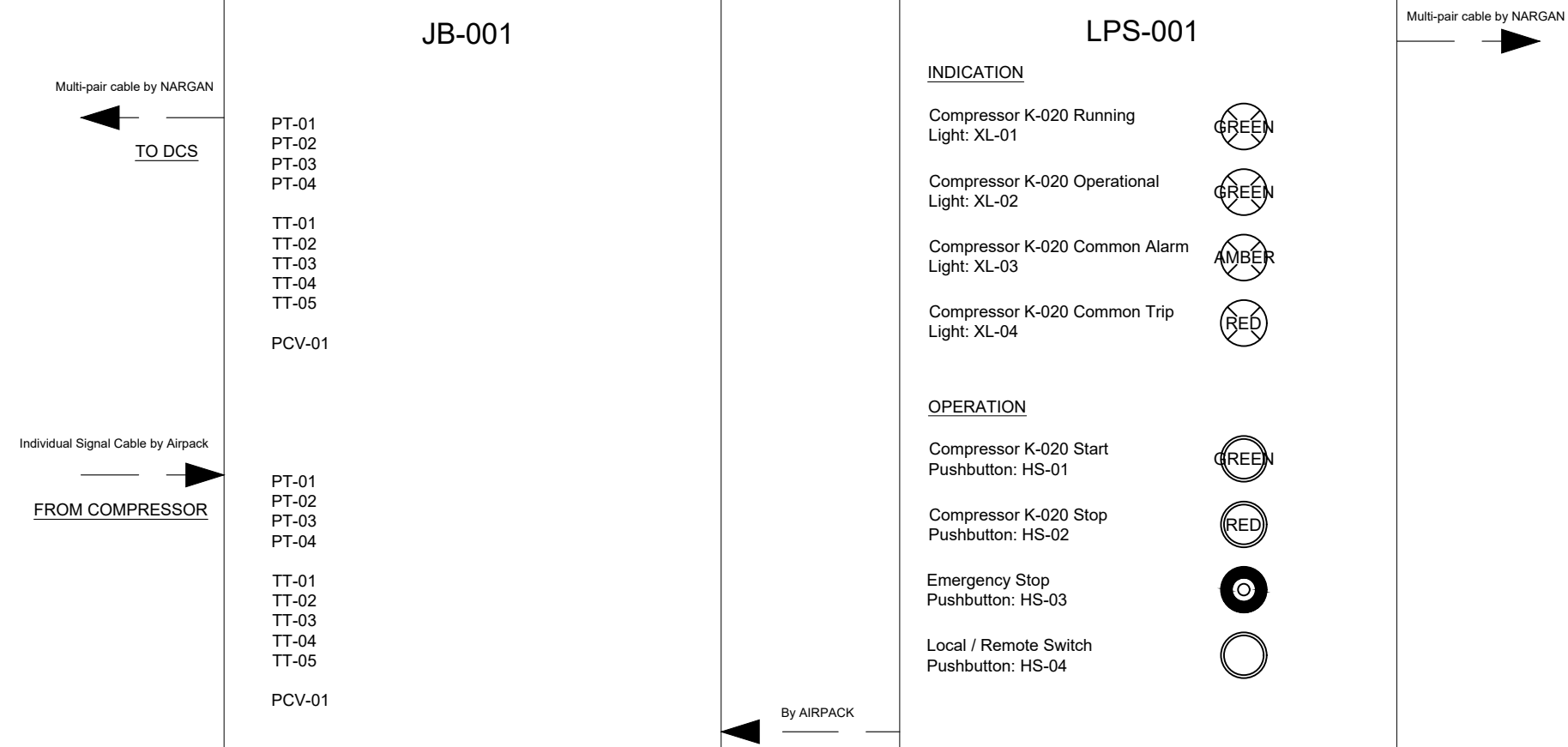
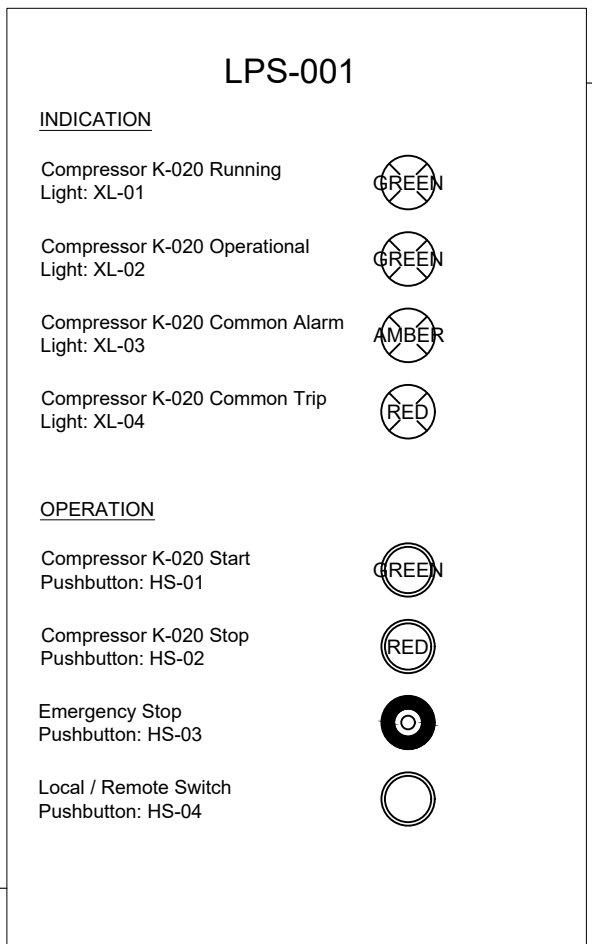
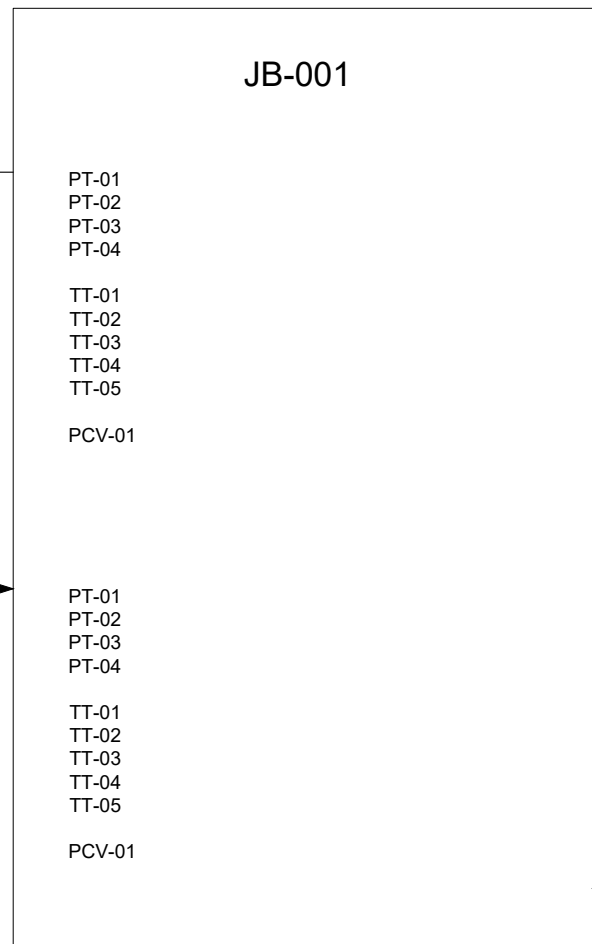
Rev. Page	01	02	03	04	05	Rev. Page	01	02	03	04	05	Rev. Page	01	02	03	04	05	Rev. Page	01	02	03	04	05	
1	X					26						51						76						
2	X					27						52						77						
3	X					28						53						78						
4	X					29						54						79						
5						30						55						80						
6						31						56						81						
7						32						57						82						
8						33						58						83						
9						34						59						84						
10						35						60						85						
11						36						61						86						
12						37						62						87						
13						38						63						88						
14						39						64						89						
15						40						65						90						
16						41						66						91						
17						42						67						92						
18						43						68						ATTACHMENT						
19						44						69						1						
20						45						70						2						
21						46						71						3						
22						47						72						4						
23						48						73						5						
24						49						74						6						
25						50						75						7						

COMPRESSOR	MAIN MOTOR	INTERCOOLER	AFTERCOOLER	PULSATION DAMPER INLET	PULSATION DAMPER 1ST STAGE DISCHARGE	PULSATION DAMPER 2ND STAGE SUCTION	PULSATION DAMPER 2ND STAGE DISCHARGE
Tagnumber: C-001 Type: 2-stage oilfree piston Modelnumber: RBV-130 Discharge capacity: 35 Nm <sup>3</sup> /h Operating pressure: 30 bar(g) Speed: 410 rpm	Tagnumber: M-001 Rated power: 11 kW Speed: 1485 rpm Power supply: 400 V / 50 Hz / 3 ph Ingress protection: IP-55 Hazardous area class: Safe Area	Tagnumber: E-001 Flow air side: 35 Nm <sup>3</sup> /hr Flow water side: .. Nm <sup>3</sup> /hr OP / DP: 23,3 bar(g) / 25 bar(g) OT / DT: 157 °C / 165 °C Design: TEMA C, ASME VIII Div. 1 Material: CS shell, SS316 tubes	Tagnumber: E-002 Flow air side: 35 Nm <sup>3</sup> /hr Flow water side: .. Nm <sup>3</sup> /hr OP / DP: 30 bar(g) / 34 bar(g) OT / DT: 116 °C / 125 °C Design: TEMA C, ASME VIII Div. 1 Material: CS shell, SS316 tubes	Tagnumber: V-001 Volume: 30 L OP / DP: 9,5 bar(g) / 12,5 bar(g) OT / DT: 46 °C / 50 °C Design: ASME VIII Div. 1 Material: CS	Tagnumber: V-002 Volume: 30 L OP / DP: 23,3 bar(g) / 25 bar(g) OT / DT: 157 °C / 165 °C Design: ASME VIII Div. 1 Material: CS	Tagnumber: V-003 Volume: 30 L OP / DP: 22,1 bar(g) / 25 bar(g) OT / DT: 60 °C / 70 °C Design: ASME VIII Div. 1 Material: CS	Tagnumber: V-004 Volume: 30 L OP / DP: 30 bar(g) / 34 bar(g) OT / DT: 116 °C / 125 °C Design: ASME VIII Div. 1 Material: CS



- NOTES
- 1) All tagnumbers have prefix '101-'
  - 2) Instrument / control air tubing size: 12mm
  - 3) TT and TG process connection is 3/4" NPT
  - 4) TW process connection is 1 1/2" flange
  - 5) PT and PG process connection is 1/2" NPT
  - 6) Process connection of control valve is 300# flanged ANSI
  - 7) Main process line piping material is SS316
  - 8) Cooling water process line piping material is carbon steel

00	29/08/23	ISSUED FOR REVIEW	SK	KP	JJ		
REV.	DATE	DESCRIPTION	DRAWN	CHECK	APPROVED		
CLIENT:		CONTRACTOR:	VENDOR:				
<small>THIS DOCUMENT HAS BEEN PRODUCED BY CONTRACTOR FOR LIDCO IT IS CONFIDENTIAL AND CANNOT BE DISCLOSED TO OR USED BY ANY THIRD PARTY FOR ANY PURPOSE, WITHOUT PRIOR WRITTEN CONSENT.</small>							
<b>PROJECT TITLE:</b> LIDCO, Pars SEE Zone, Assaluyeh Integrated Methanol and Ammonia Plant 3000 MTPD MeOH/900 MTPD NH3 PROJECT							
<b>DRAWING TITLE:</b> Integrated Methanol and Ammonia Plant							
DOCUMENT No:					SC.		
17735-03 P&ID					SIZE: A3		
PROJECT No.	VENDOR DOC.	P.O. No.	DEPARTMENT	DOC. TYPE	SERIAL No.	REV.	SHEET No.
N278	VD	6019	PR	PID	0002	01	1 OF 2



00	29/08/23	ISSUED FOR REVIEW	SK	KP	JJ				
REV.	DATE	DESCRIPTION	DRAWN	CHECK	APPROVED				
CLIENT:		CONTRACTOR:	VENDOR:						
THIS DOCUMENT HAS BEEN PRODUCED BY CONTRACTOR FOR LIDCO IT IS CONFIDENTIAL AND CANNOT BE DISCLOSED TO OR USED BY ANY THIRD PARTY FOR ANY PURPOSE, WITHOUT PRIOR WRITTEN CONSENT.									
PROJECT TITLE: LIDCO, Pars SEE Zone, Assaluyeh Integrated Methanol and Ammonia Plant 3000 MTPD MeOH/900 MTPD NH3 PROJECT									
DRAWING TITLE: Integrated Methanol and Ammonia Plant									
DOCUMENT No: 17735-03 P&ID								SC.	
								SIZE: A3	
PROJECT No.	VENDOR DOC.	P.O. No.	DEPARTMENT	DOC. TYPE	SERIAL No.	REV.	SHEET No.		
N278	VD	6019	PR	PID	0002	01	2 OF 2		

**NOTES**

- 1) All tagnumbers have prefix '101-'
- 2) Package will be DCS controlled (by others)