





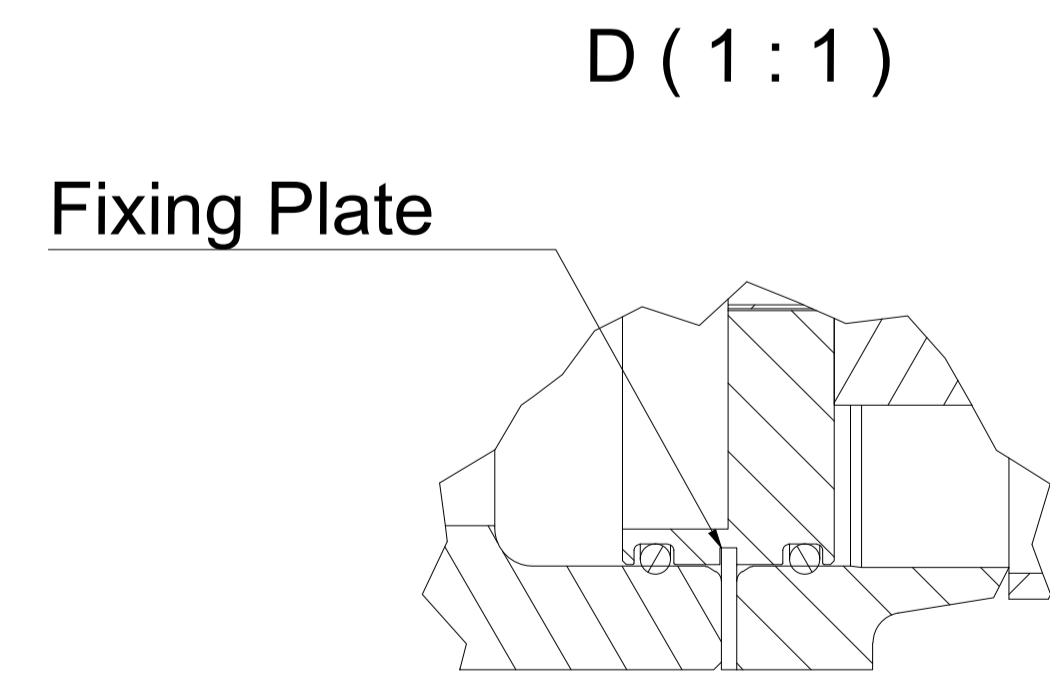
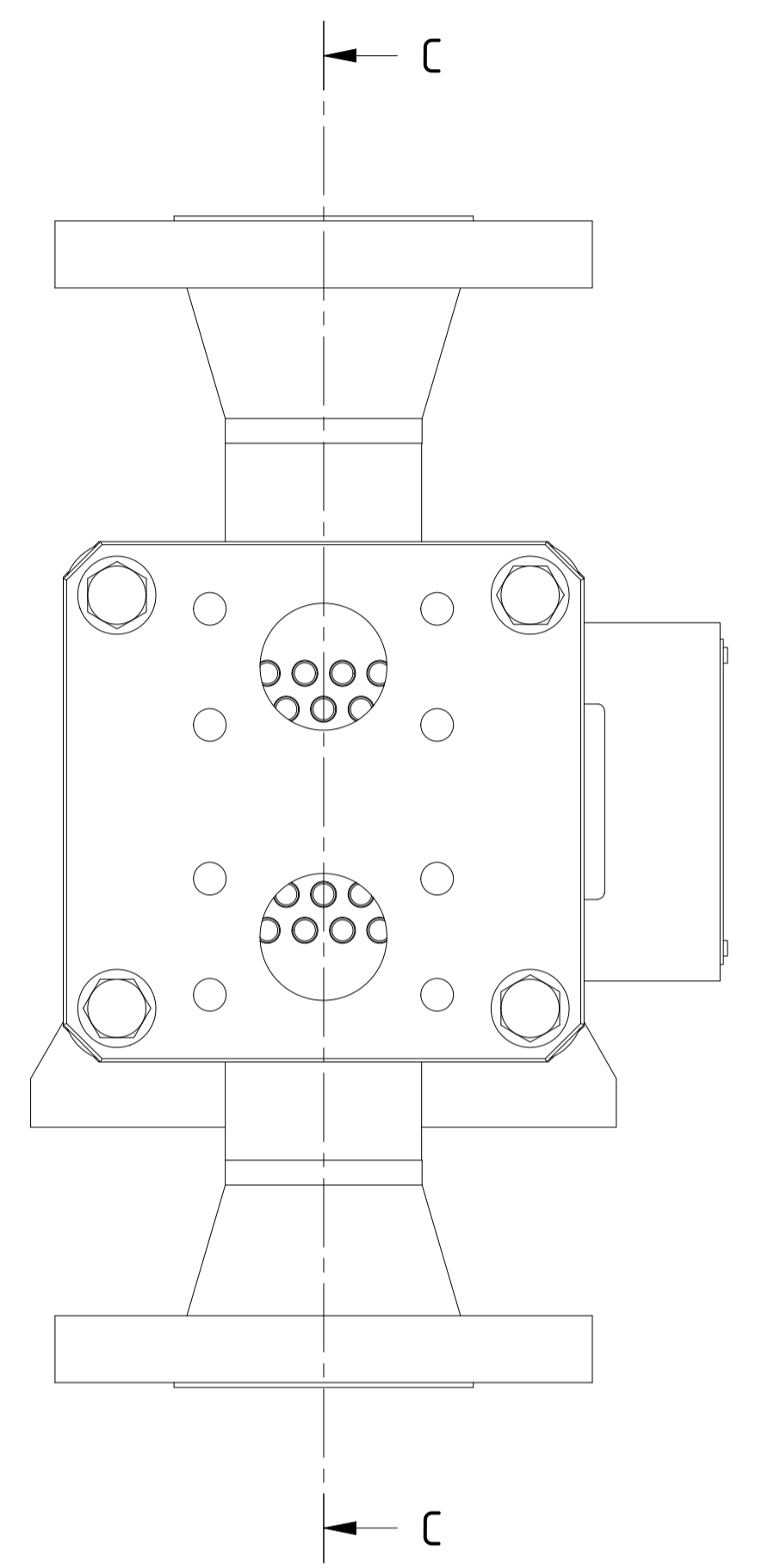
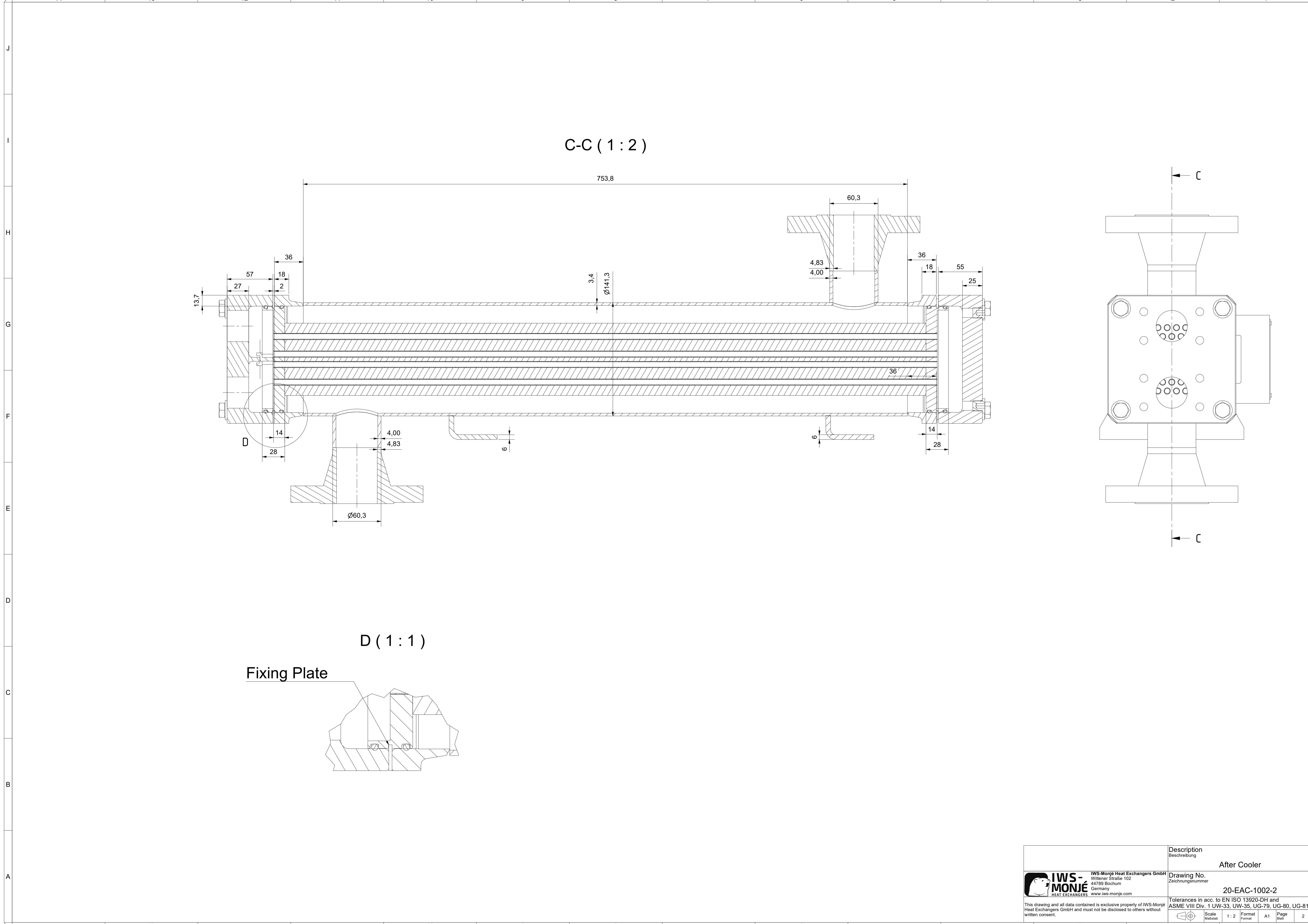



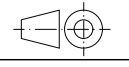
OWNER:  شرکت سست و سویی گیس ایرپک (سهامی خاص)	BUSHEHR PETROCHEMICAL COMPANY MEG PLANT						EPC CONTRACTOR:  Chagalesh-Enerchimi-Steam Joint Venture BUPC-MEG PLANT PROJECT		
	AFTER COOLER DETAIL DRAWING FOR NITROGEN GAS BOOSTER								
MC :  شرکت سست و سویی گیس ایرپک (سهامی خاص)	Project	Area	Phase	Unit	Dis.	Doc.	Seq.	Contract No : 52-98/445	
Owner Document Number: 17811-23A	BU	20	VD	303	ME	DWG	0018	Rev.:	Page
								01	1 of 8

AFTER COOLER DETAIL DRAWING FOR NITROGEN GAS BOOSTER

 شرکت سست و سویی گیس ایرپک (سهامی خاص)	 Chagalesh-Enerchimi-Steam Joint Venture BUPC-MEG PLANT PROJECT	BUSHEHR PETROCHEMICAL COMPANY MEG PLANT
Document Review		
Issue Purpose:	FA	
Result Code: AP,AN,CM,RE,NC	AN	
Next Status : IFC,IFA,IFI,AFC,AB	AFC	
Responsible Department	MECHANICAL	
Commented Date	Feb/16/2022	
Approval or review hereunder shall not be construed to relieve Vendor / Subcontractor of his responsibilities and liability under the contract.		

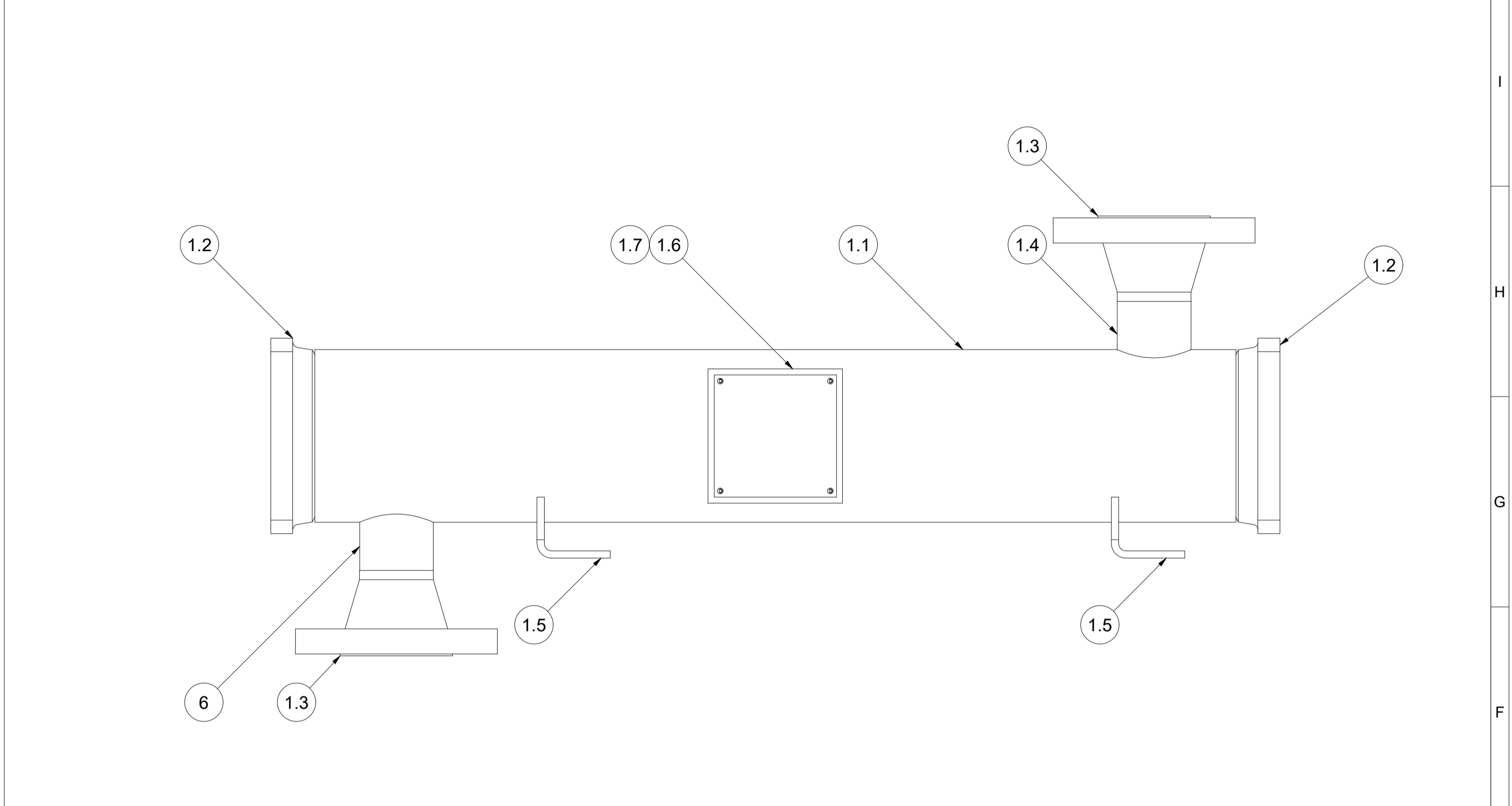
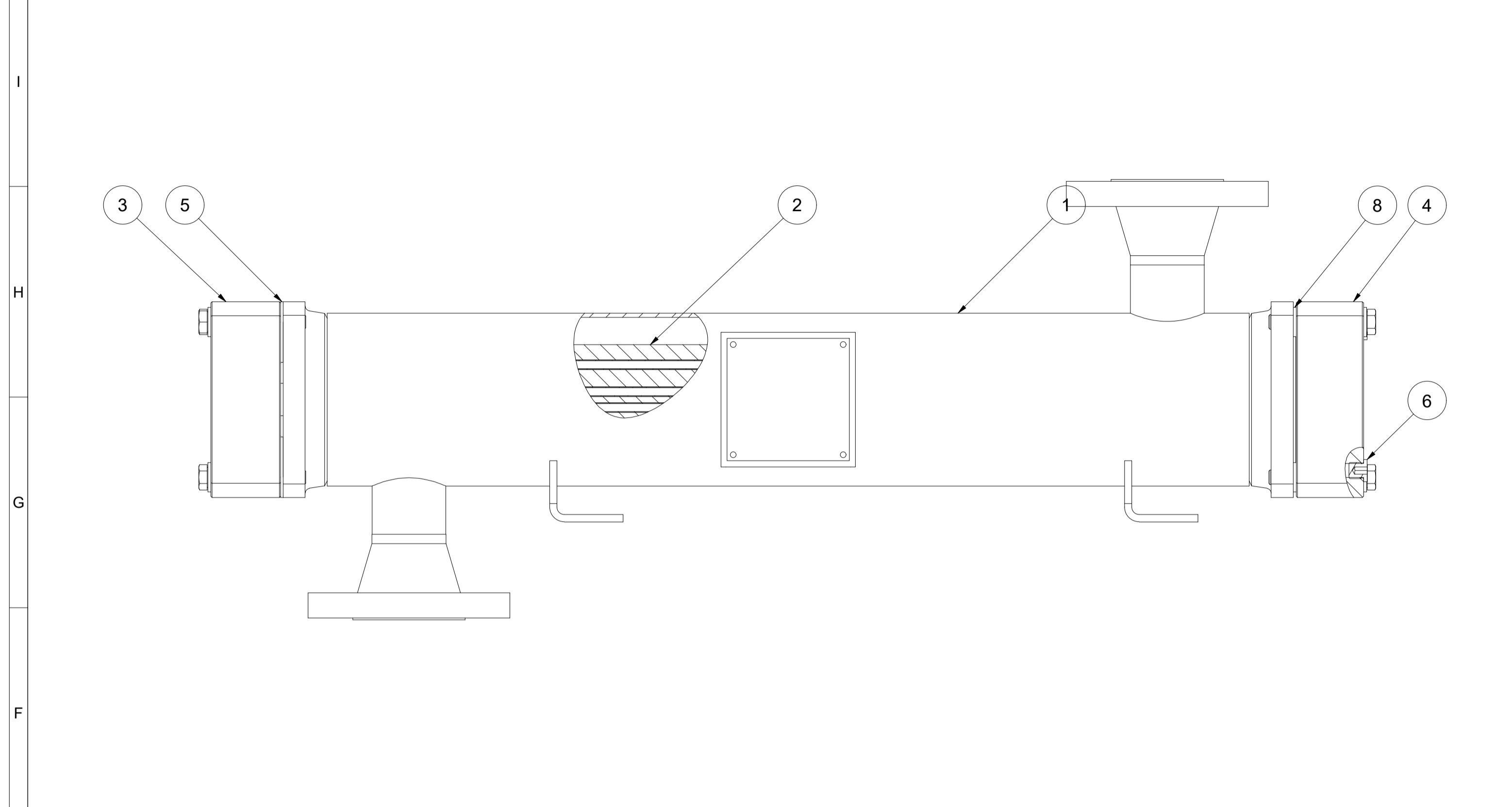
01	07/02/2022	For approval	KP	LdM	JR	
00	06/12/2021	For approval	KP	LdM	JR	
Rev.	Date	Purpose of Issue	Prepared	Checked	Approved	AC Code
					Class: 1	Phase: P



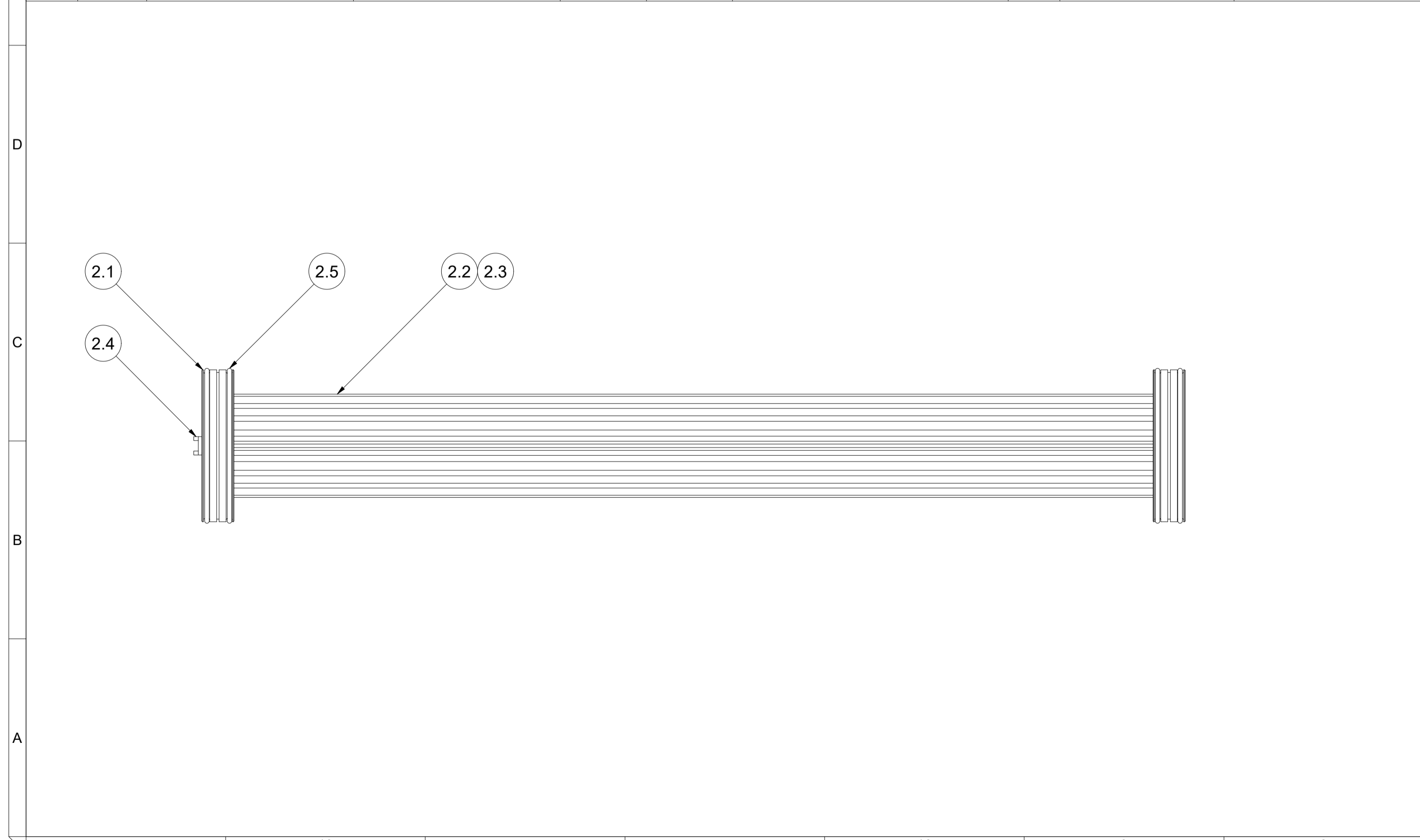
 IWS-MONJÉ <small>HEAT EXCHANGERS</small>	IWS-Monjé Heat Exchangers GmbH Wittener Straße 102 44789 Bochum Germany <small>www.iws-monje.com</small>	Description Beschreibung	After Cooler
		Drawing No. Zeichnungsnummer	20-EAC-1002-2
<small>This drawing and all data contained is exclusive property of IWS-Monjé Heat Exchangers GmbH and must not be disclosed to others without written consent.</small>		Tolerances in acc. to EN ISO 13920-DH and ASME VIII Div. 1 UW-33, UW-35, UG-79, UG-80, UG-81	
 Scale Maßstab	1:2	Format Format	A1 Page Blatt
			2

14	13	12	11	10	9	8			
Pos.	Qty. / Menge	Description	Bezeichnung	Material / Werkstoff	Norm	Dimensions / Abmessungen	Cert. / Zgn.	Rules / Regelwerk	Notes / Bemerkungen
1	1	Shell Assembly	Mantelbaugruppe	-	-	-	-	-	-
2	1	Bundle Assembly	Bündelbaugruppe	-	-	-	-	-	-
3	1	Front End Cover	Abdeckung Vorne	CS	-	-	3.1	-	-
4	1	Back End Cover	Abdeckung Hinten	CS	-	-	3.1	-	-
5	4	Fixing Plate	Fixierplatte	304	-	-	-	-	-
6	2	Sealing Plug	Verschlusschraube	304	-	G 1/4"	-	-	-
7	8	Bolt	Schraube	A4-70	-	M12 x 80	-	-	-
8	12	Washer	Scheibe	A4	-	Ø13mm	-	-	-

7	6	5	4	3	2	1			
Pos.	Qty. / Menge	Description	Bezeichnung	Material / Werkstoff	Norm	Dimensions / Abmessungen	Cert. / Zgn.	Rules / Regelwerk	Notes / Bemerkungen
1.1	1	Shell	Mantel	TP316	SA-312	Ø141,3mm x 3,4mm	3.1	-	-
1.2	2	Flange Ring	Flanschring	F316	SA-182	KL12	3.1	-	-
1.3	2	Welding Neck Flange	Vorschweißflansch	F316	SA-182	2" - Class 300 - RF	3.1	ASME B16.5	-
1.4	2	Nozzle Pipe	Stutzenrohr	TP316	SA-312	Ø60,3mm x 4mm	3.1	-	-
1.5	2	Foot	Fuß	304	SA-240	t=6	-	-	-
1.6	1	Nameplate Holder	Typenschildhalter	304	SA-240	-	-	-	-
1.7	1	Nameplate	Typenschild	304	SA-240	-	-	-	-

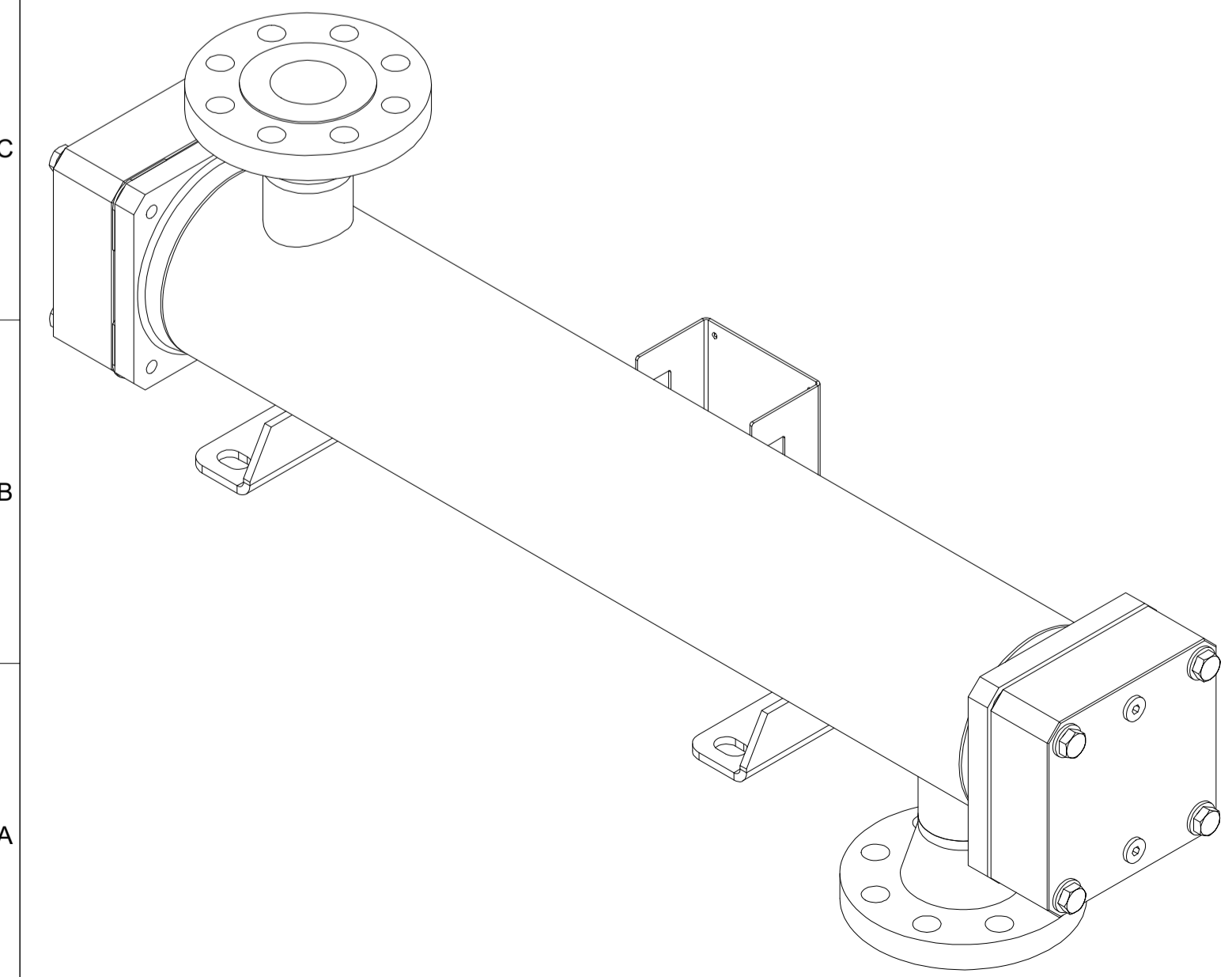
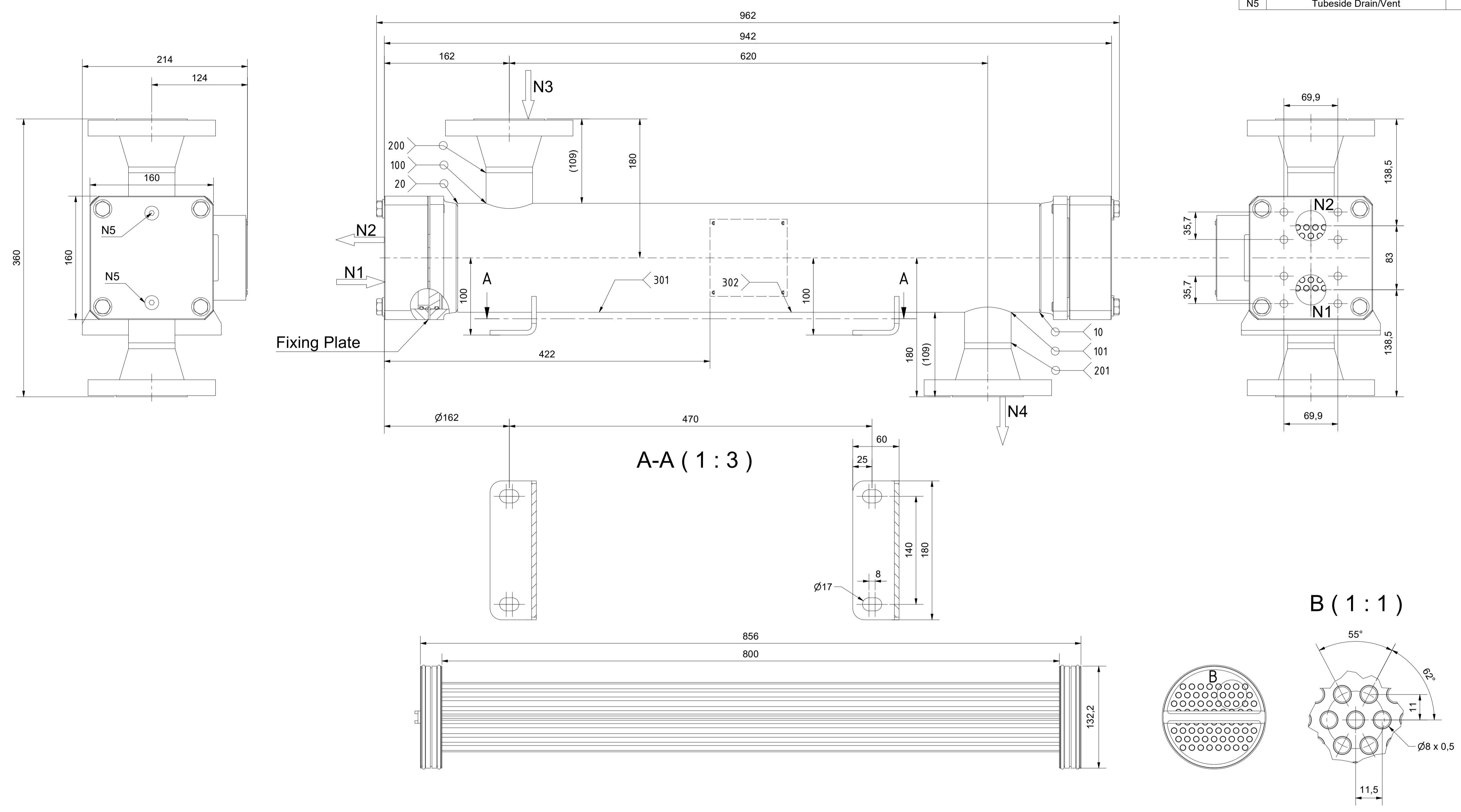


Pos.	Qty. / Menge	Description	Bezeichnung	Material / Werkstoff	Norm	Dimensions / Abmessungen	Cert. / Zgn.	Rules / Regelwerk	Notes / Bemerkungen
2.1	2	Tube sheet	Rohrplatte	Brass	-	-	3.1	-	-
2.2		Fin	Lamelle	Aluminium	-	-	-	-	-
2.3	72	Tube	Rohr	CuNi10	-	-	3.1	-	-
2.4	1	Separator Gasket	Trennstegdichtung	PE1000	-	-	-	-	-
2.5	4	O-Ring	O-Ring	Viton	-	-	-	-	-



		IWS-Monje Heat Exchangers GmbH Wittener Straße 102 44789 Bochum Germany www.iws-monje.com	
Description Beschreibung After Cooler		Drawing No. Zeichnungsnummer 20-EAC-1002-2	
This drawing and all data contained is exclusive property of IWS-Monje Heat Exchangers GmbH and must not be disclosed to others without written consent.		ASME VIII Div. 1 UW-33, UW-35, UG-79, UG-80, UG-81 Tolerances in accordance to EN ISO 13920-DH and Scale: 1:3 Format: A1 Page: 3	

Nozzle Table / Stutzentabelle		
No. / Nr.	Function / Funktion	Size / Größe
N1	Tubeside In	SAE 1 1/2" - 3000PSI
N2	Tubeside Out	SAE 1 1/2" - 3000PSI
N3	Shellside In	ASME B16.5 - 2" - Class 300 - RF - s=4,83mm
N4	Shellside Out	ASME B16.5 - 2" - Class 300 - RF - s=4,83mm
N5	Tubeside Drain/Vent	G 1/4"



Job Information	
Job No. Auftrags Nr.	21-11-67
Serial No. Serien Nr.	211167-1
IWS Project No. IWS Projekt Nr.	104213658
IWS Item No. IWS Artikel Nr.	704212651_A
Customer Tag No. Kunden Erkennungs Nr.	17811-CC-0001
Design Parameters	
Mech. Design Code Konstruktionsvorschrift	ASME VIII Div.1 - ed. 2019
TEMA Class/Type	Type BEW
	Tubeside Shellside
	Rohrseite Mantelseite
Design Pressure (MAWP) Max. zul. Druck (MAWP) / (PS)	-1/10bar(g) -1/25bar(g)
Test Pressure (PT) Prüfdruck	15bar(g) 37,5bar(g)
Design Temperature (AT) Zul. Betriebstemperatur (AT) / (TS)	-10/95°C -10/210°C
Volume (V) Volumen	2,9L 7,6L
Corrosion Allowance Korrosionszuschlag	0mm 0mm
Certification / Registration	
	Zertifizierung / Registrierung
<input checked="" type="checkbox"/> ASME VIII Div. 1	U-Stamp No
	NB Registration No
Nondestructive Testing (NDT)	
Radiographic Testing Durchstrahlungsprüfung	Acc. to design code
Penetrant Test/Magn. Particle Test. Oberflächenrisssprüfung	none
Delta Ferrite Testing Delta Ferritprüfung	none
Ultrasonic Testing Ultraschallprüfung	none
Corresponding Documents	
	Zugehörige Dokumente
Strength Calculation Festigkeitsberechnung	BK12-3102
Weld- and Test Plan Schweiß- und Prüfplan	SK12-3102
Parts List Stückliste	Page 3

IWS-Monje
www.iws-monje.com

Kd.-Id. - Nr: 17811-CC-0001
IWS-Id. Nr: 704212651_A

Manufactured by: 901050003
Hersteller

No Serie: 211167-1 Built: 2022
Seriennr. Baujahr

	Tubeside	Shellside	
PS	-1/10	-1/25	bar(g)
V	2,9	7,6	L
TS	-10/95	-10/210	°C
PT	15	37,5	bar(g)
Fluidgroup	-	-	Fluidgruppe

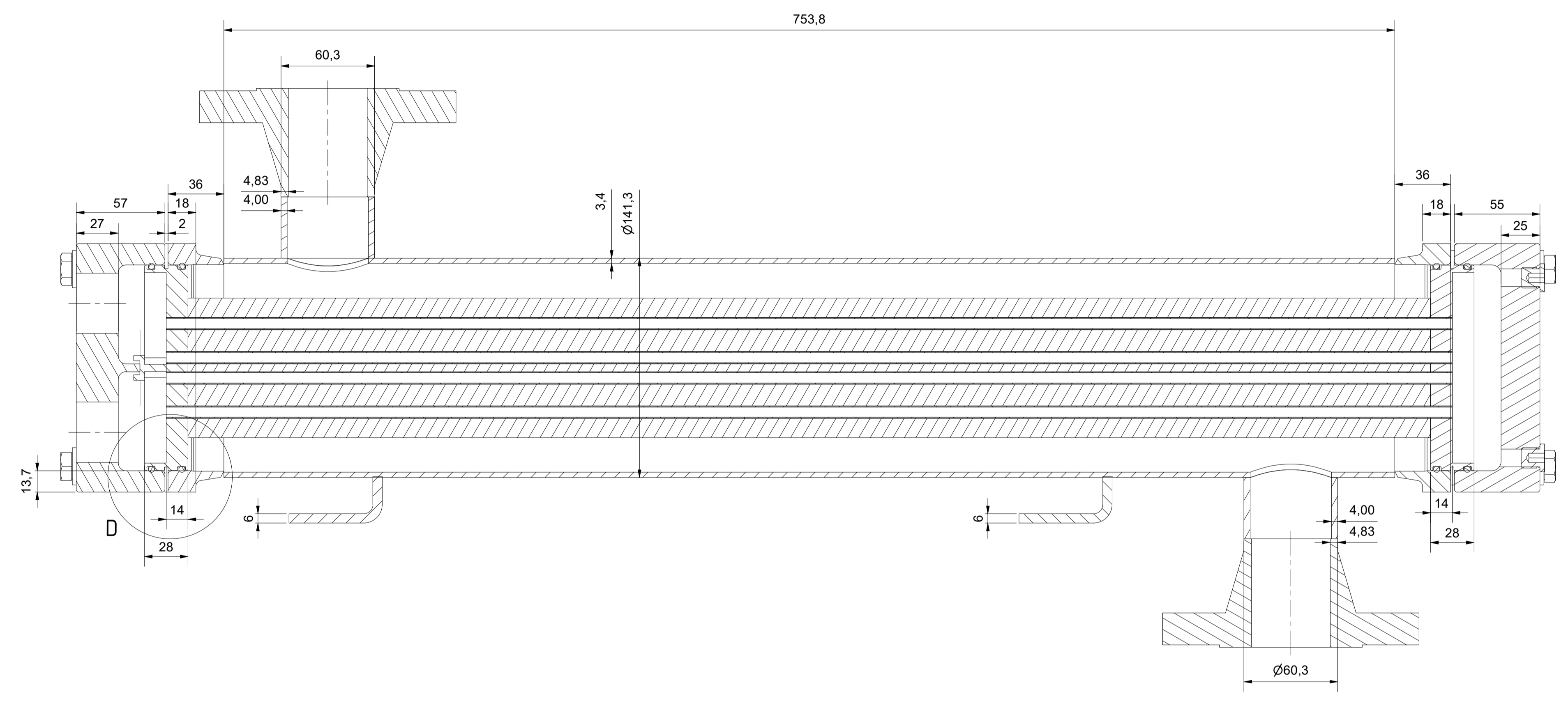
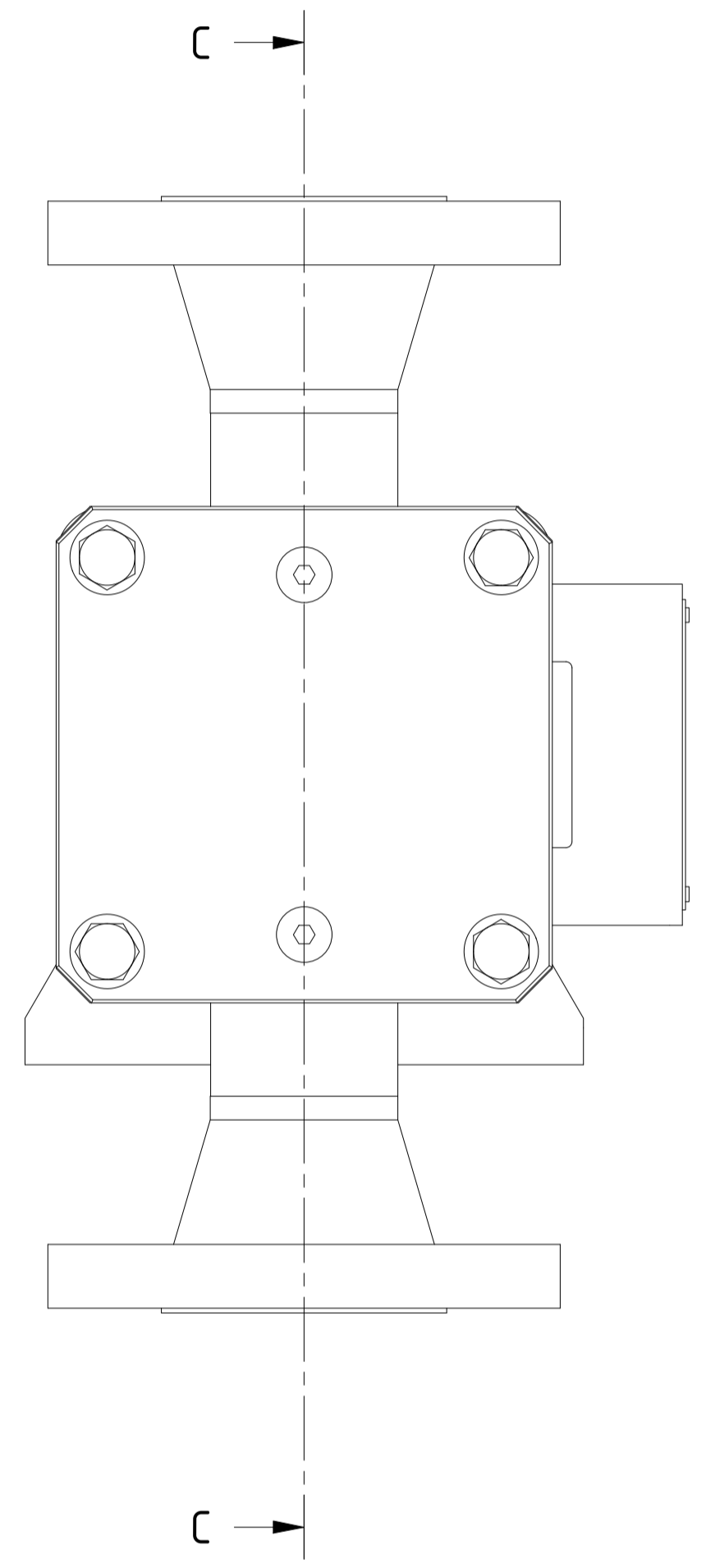
Type / Typ: RLP 800/140-72-2-0/1-CuNi/AL-IW

General Information				
R01	Changes acc. to customer requests	02.02.2022	K.Kraft	Surface Treatment Shell pickled and passivated
				Surface Treatment Header RAL 7001 - Zarcosin coated inner surface
Rev.	Changes	Date	Name	Empty Weight
Rev.	Änderungen	Datum	Name	Leergewicht
				ca.38,4 kg
				Description
				Inter Cooler
				Drawing No.
				Zeichnungsnummer
				20-EAC-1002-1
				Tolerances in acc. to EN ISO 13920-DH and ASME VIII Div. 1 UW-33, UW-35, UG-79, UG-80, UG-81
				This drawing and all data contained is exclusive property of IWS-Monje Heat Exchangers GmbH and must not be disclosed to others without written consent.
				Scale 1:3
				Format A1
				Page 1

14 13 12 11 10 9 8 7 6 5 4 3 2 1

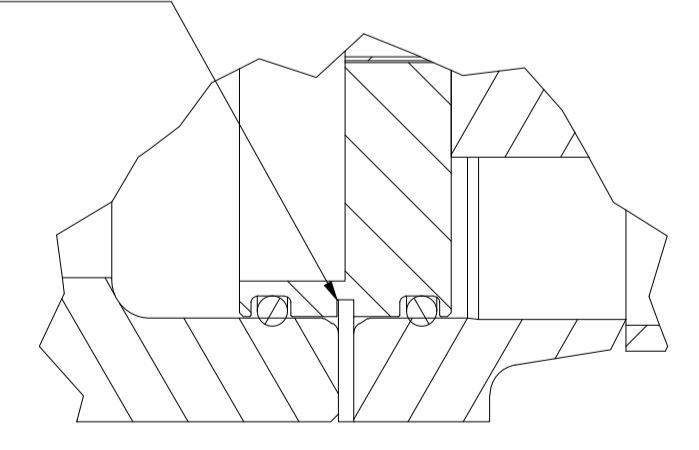
J I H G F E D C B A

C-C (1:2)



D (1:1)

Fixing Plate

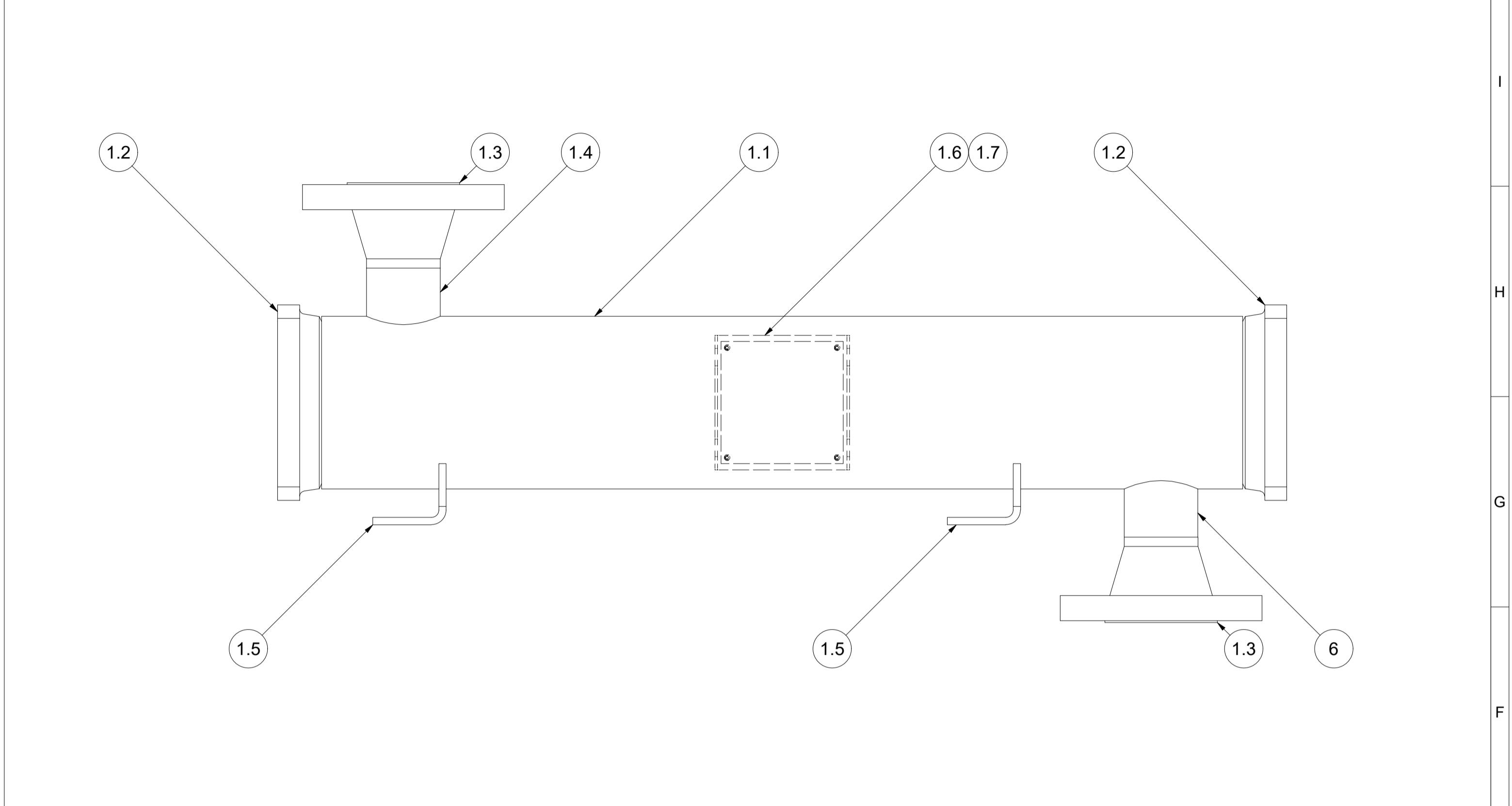
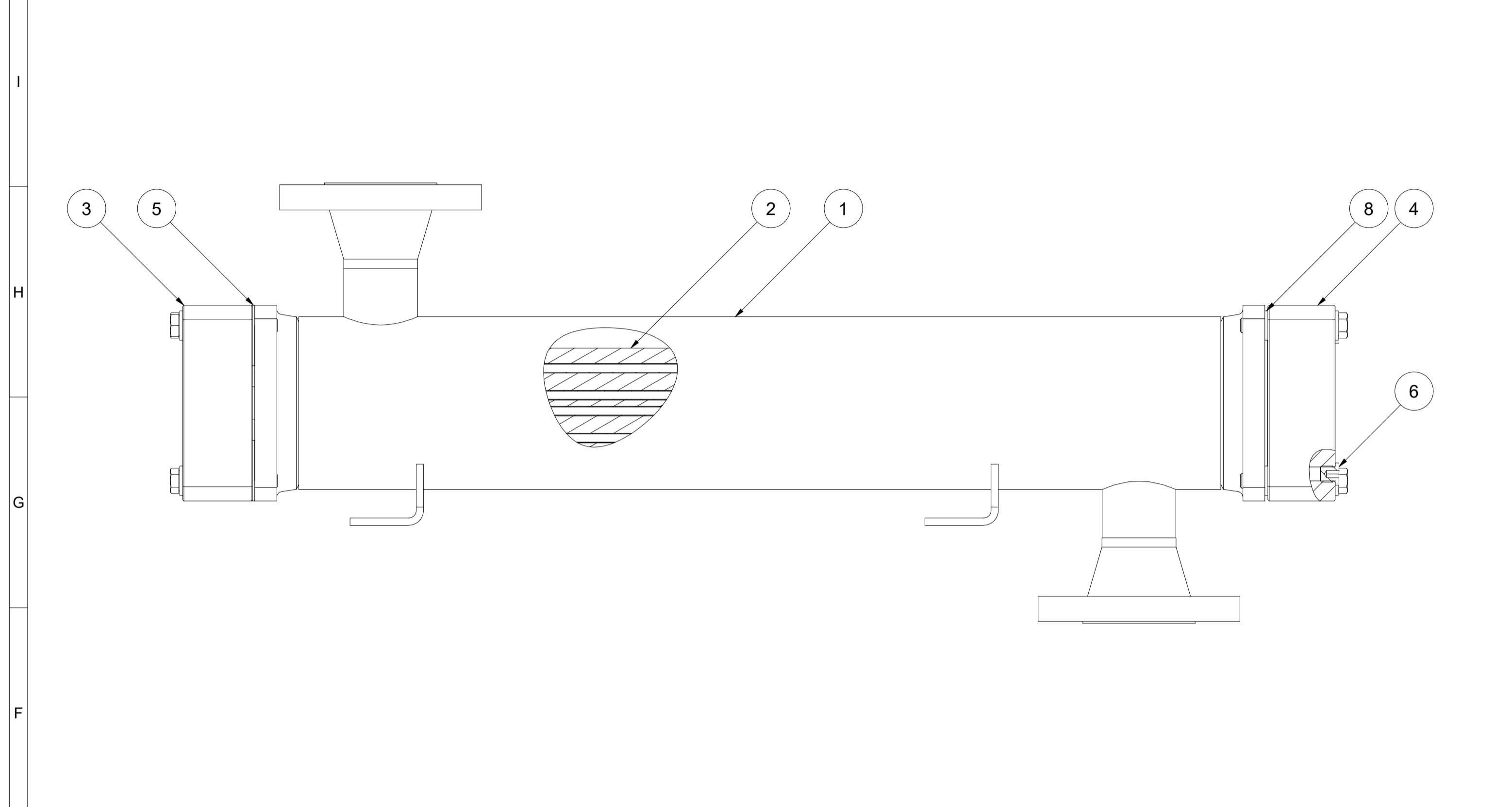


<p>IWS-MONJE HEAT EXCHANGERS</p>	<p>IWS-Monje Heat Exchangers GmbH Wittener Straße 102 44789 Bochum Germany www.iws-monje.com</p>	<p>Description Beschreibung Inter Cooler</p>
	<p>Drawing No. Zeichnungsnummer 20-EAC-1002-1</p>	<p>ASME VIII Div. 1 UW-33, UW-35, UG-79, UG-80, UG-81 Tolerances in acc. to EN ISO 13920-DH and Scale: 1:2 Format: A1 Page: 2</p>

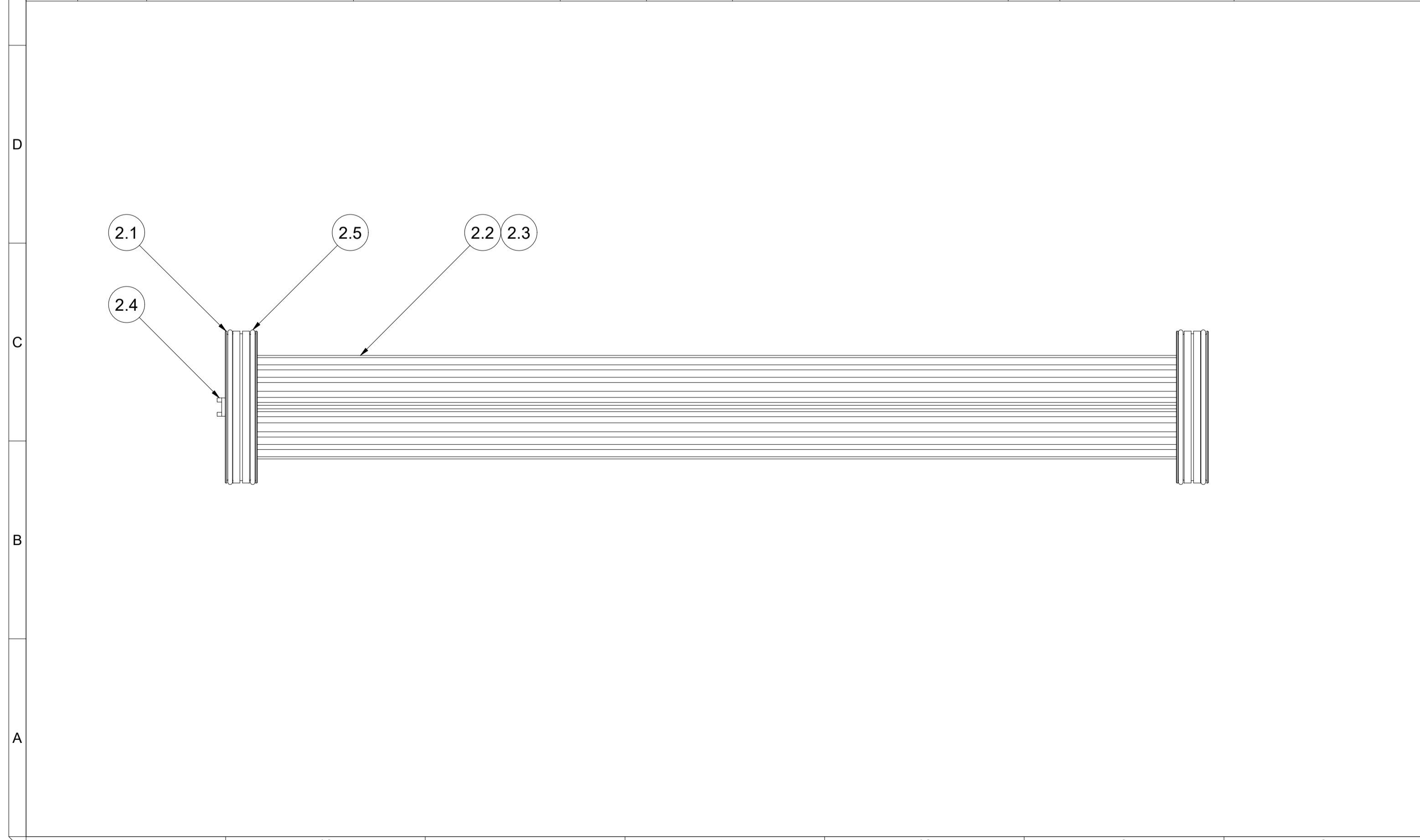
14 13 12 11 10 9 8 7 6 5 4 3 2 1

Pos.	Qty. / Menge	Description	Bezeichnung	Material / Werkstoff	Norm	Dimensions / Abmessungen	Cert. / Zgn.	Rules / Regelwerk	Notes / Bemerkungen
1	1	Shell Assembly	Mantelbaugruppe	-	-	-	-	-	-
2	1	Bundle Assembly	Bündelbaugruppe	-	-	-	-	-	-
3	1	Front End Cover	Abdeckung Vorne	CS	3.1	-	-	-	-
4	1	Back End Cover	Abdeckung Hinten	CS	3.1	-	-	-	-
5	4	Fixing Plate	Fixierplatte	304	-	-	-	-	-
6	2	Sealing Plug	Verschlusschraube	304	-	G 1/4"	-	-	-
7	8	Bolt	Schraube	A4-70	-	M12 x 80	-	-	-
8	12	Washer	Scheibe	A4	-	Ø13mm	-	-	-

Pos.	Qty. / Menge	Description	Bezeichnung	Material / Werkstoff	Norm	Dimensions / Abmessungen	Cert. / Zgn.	Rules / Regelwerk	Notes / Bemerkungen
1.1	1	Shell	Mantel	TP316	SA-312	Ø141,3mm x 3,4mm	3.1	-	-
1.2	2	Flange Ring	Flanschring	F316	SA-182	KL12	3.1	-	-
1.3	2	Welding Neck Flange	Vorschweißflansch	F316	SA-182	2" - Class 300 - RF	3.1	ASME B16.5	-
1.4	2	Nozzle Pipe	Stutzenrohr	TP316	SA-312	Ø60,3mm x 4mm	3.1	-	-
1.5	2	Foot	Fuß	304	SA-240	t=6	-	-	-
1.6	1	Nameplate Holder	Typenschildhalter	304	SA-240	-	-	-	-
1.7	1	Nameplate	Typenschild	304	SA-240	-	-	-	-



Pos.	Qty. / Menge	Description	Bezeichnung	Material / Werkstoff	Norm	Dimensions / Abmessungen	Cert. / Zgn.	Rules / Regelwerk	Notes / Bemerkungen
2.1	2	Tubesheet	Rohrplatte	Brass	-	-	3.1	-	-
2.2		Fin	Lamelle	Aluminium	-	-	-	-	-
2.3	72	Tube	Rohr	CuNi10	-	-	3.1	-	-
2.4	1	Separator Gasket	Trennstegdichtung	PE1000	-	-	-	-	-
2.5	4	O-Ring	O-Ring	Viton	-	-	-	-	-



		IWS-MONJE Heat Exchangers GmbH Wittener Straße 102 44789 Bochum Germany www.iws-monje.com		Description Beschreibung Inter Cooler	
Drawing No. Zeichnungsnummer 20-EAC-1002-1		ASME VIII Div. 1 UW-33, UW-35, UG-79, UG-80, UG-81 Tolerances in acc. to EN ISO 13920-DH and Scale 1:3			
This drawing and all data contained is exclusive property of IWS-Monje Heat Exchangers GmbH and must not be disclosed to others without written consent.		Page 3 of 3			